

MEDIAN REMOVAL 13TH AND RIDGE ROAD

Project Number
121-PPP (607879)

CITY OF WICHITA, KANSAS
Michael E. Lindebak, P. E., City Engineer

INDEX

1. Cover
2. Pavement Removal Plan
3. Striping Plan

GENERAL NOTES

1. Contractor will be required to provide notice to utility companies a minimum of twenty-four (24) hours prior to any excavation, as follows:

Kansas One-Call 687-2470

The Contractor must notify the following in case of an emergency:

Cablevision	252-4270
or	253-2061
K.P.L. Gas Service Company	383-8650
Kansas Gas & Electric Company	383-8600
Peoples Natural Gas	942-8811
or	1800-303-0357
Southwestern Bell Telephone Company	1-571-2611
City of Wichita Water Department	268-4908
City of Wichita Sewer Department	268-4071
Kansas Gas Service	832-3168
or	832-3167

2. Exist. utilities and their locations, as shown on the plans, represent the best information obtainable for design. Location information has been obtained from the various utility companies and is either from company record drawings or company-provided field locations. The Contractor will be required to work around existing utilities which do not conflict with proposed construction.

3. The Contractor to verify utility locations prior to construction of this project.

4. Utility service and installation shall be coordinated with the respective utility owners. Contacts are:

Kansas Gas Service	Jim Stoltz	832-3122
K.G.E.	Russ Chitwood	261-6251
Wichita Water	Paul Bryant	268-4535
	Steve Palmer	268-4908
Southwestern Bell	Jim Tobin	268-2759

5. Traffic affected by the construction of this project shall be handled in accordance with the latest edition of the Manual on Uniform Traffic Control Devices.

6. A saw cut of at least one-half the depth of existing surface courses or one-fourth the depth of the existing total pavement thickness shall be provided at locations where proposed construction abuts an existing surface course or pavement for which partial removal of that surface or pavement is required. Sawed joint to facilitate removal within three (3) feet of existing joints will not be permitted and for such instances the limits of removal shall extend to the existing joint. Such saw cuts will not be paid for directly and this cost shall be considered as subsidiary to the removal of the surface or pavement.

7. Rubble from the removal of miscellaneous structures and excavation which is to be wasted shall be disposed of on sites to be provided by the Contractor. These sites shall be approved by the Engineer as to suitability, appearance and site location. Locations that, in the opinion of the Engineer, will leave an unsightly appearance will not be approved.

8. All disposal sites must be approved by the Kansas Department of Health and Environment. Material either stockpiled or disposed of in a flood plain would require a Kansas State Board of Agriculture permit. Any material buried or stockpiled beyond approved construction limits would require additional archaeological investigations unless buried in a previously approved borrow location.

9. Contractor to deliver all removed signs to the city.

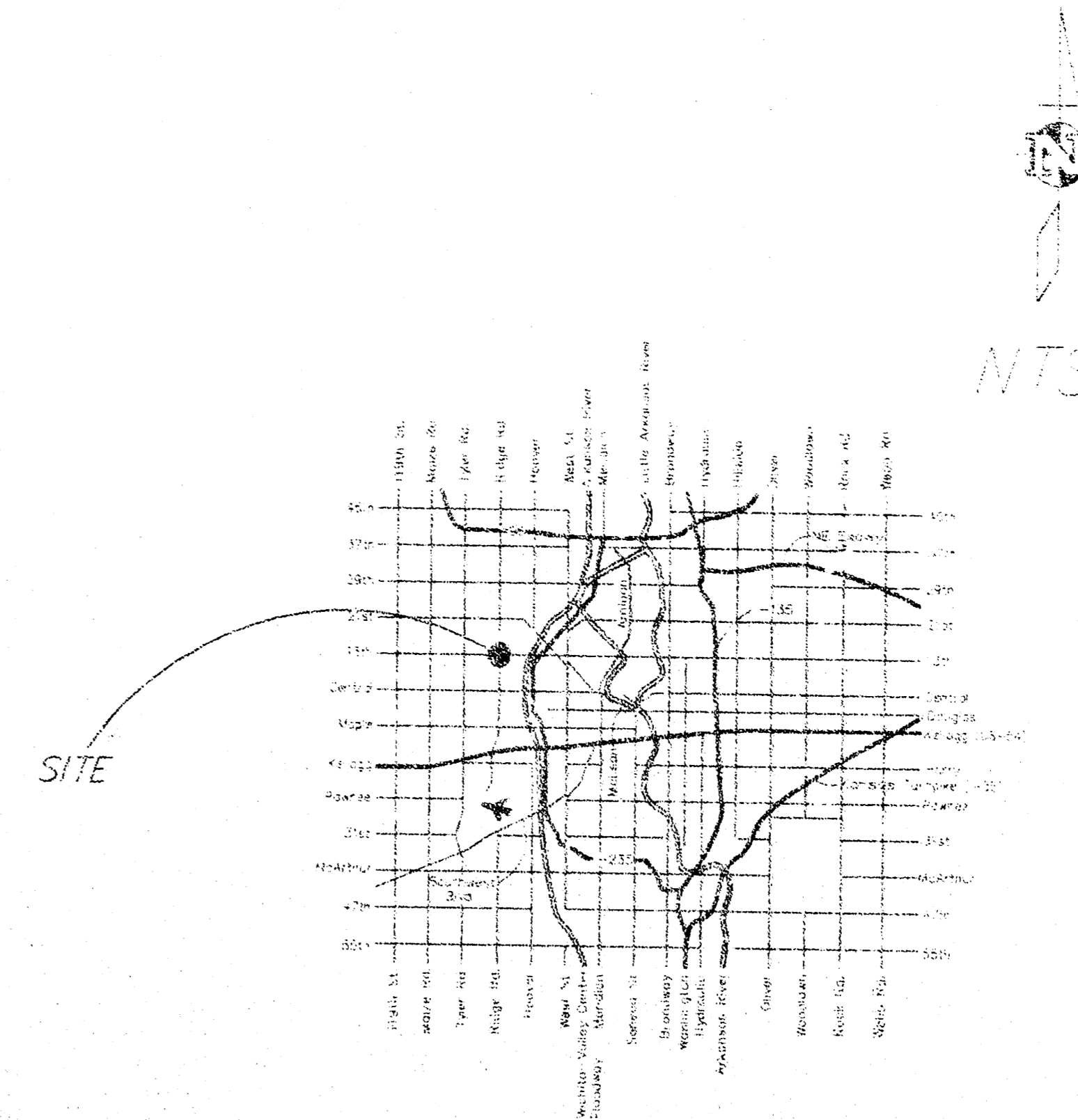
10. Striping material shall be thermoplastic.

11. Construction to be coordinated with the city's mill and overlay project. Surface layer of asphalt and pavement markings will be placed by the city's contractor unless otherwise approved by the city engineer.

NORTHWEST PARKWAY

13TH STREET NORTH

RIDGE ROAD

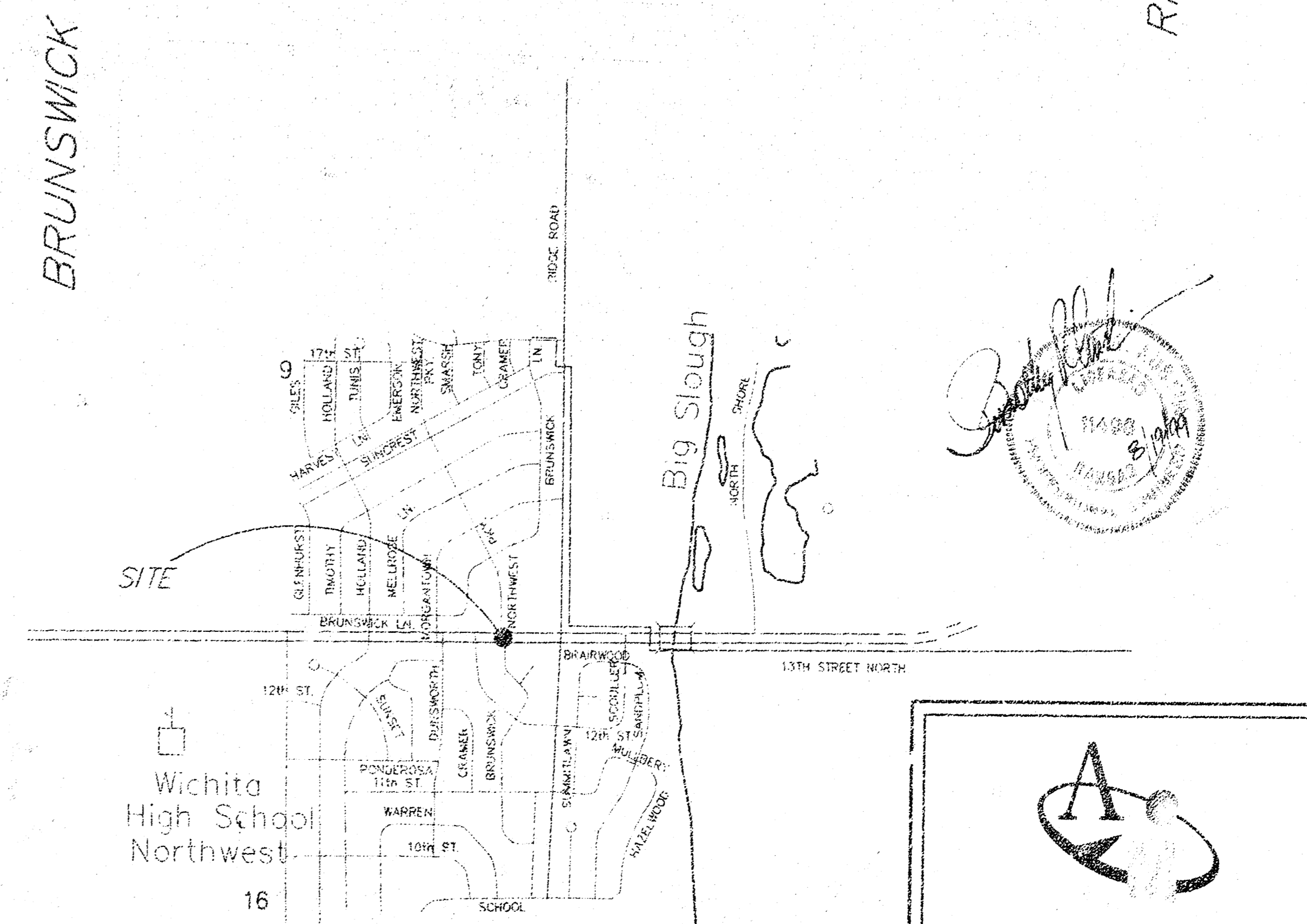


GENERAL LOCATION MAP

APPROVED AS NOTED BY CITY ENGINEER OF WICHITA

STREETS _____ *Lindebak*

Inspection and testing for this project are to be provided by a Licensed Consulting Engineering Firm under contract with the Owner/Developer. Said inspection is to be in accordance with the City of Wichita standard construction engineering practices and certified by a Licensed Professional Engineer. No work shall be performed in dedicated easements or public right-of-way by the Contractor without such inspection nor shall work be commenced without written authorization by the City Engineer. All construction and materials shall comply with the City of Wichita Specifications and Standards (on file and available in the City Engineer's Office).



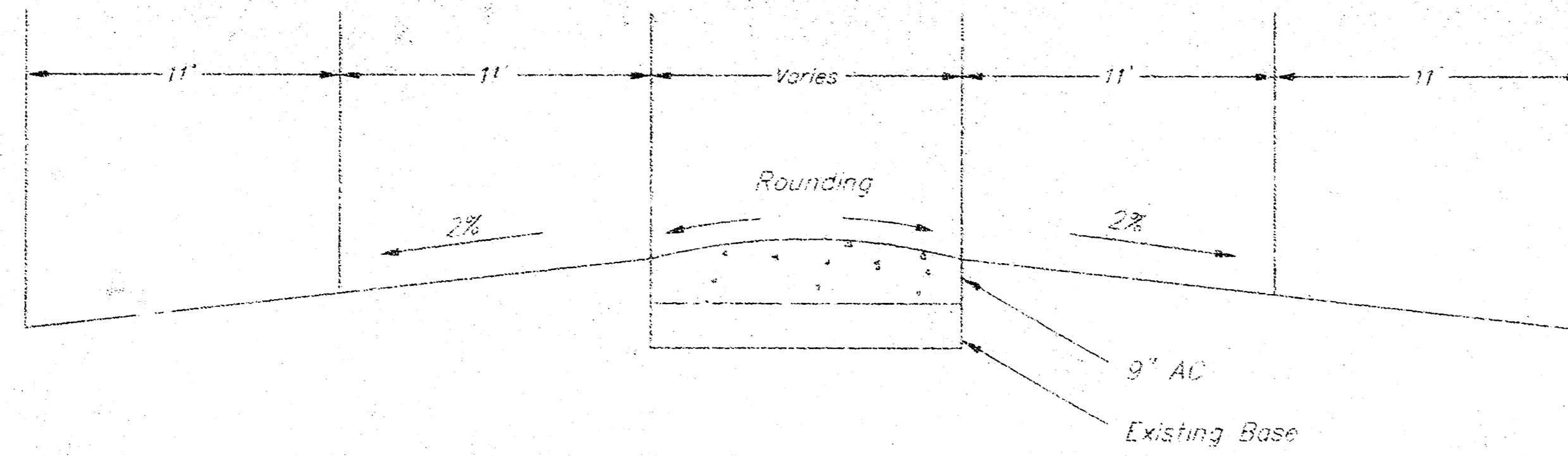
VICINITY MAP

AAS
ENGINEERING SERVICES
P.A.

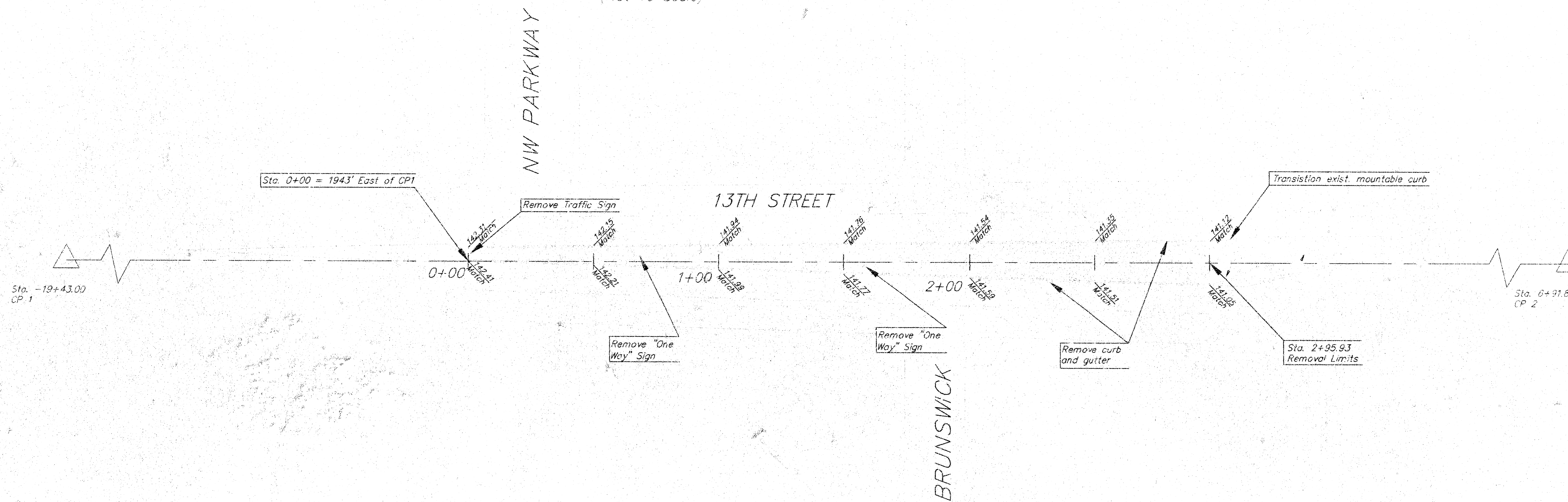
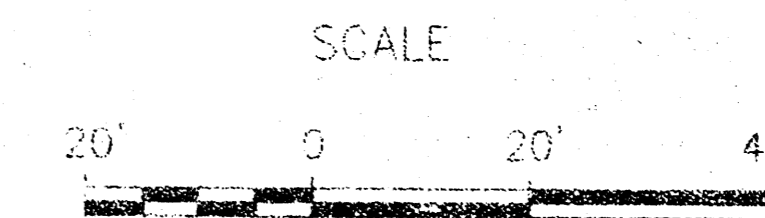
2704 S. Main, Suite 201, Wichita, KS 67211
916-262-1287 Fax: 916-262-6772

Legend

- ▲ Sign
- ▨ Pavm't Removed



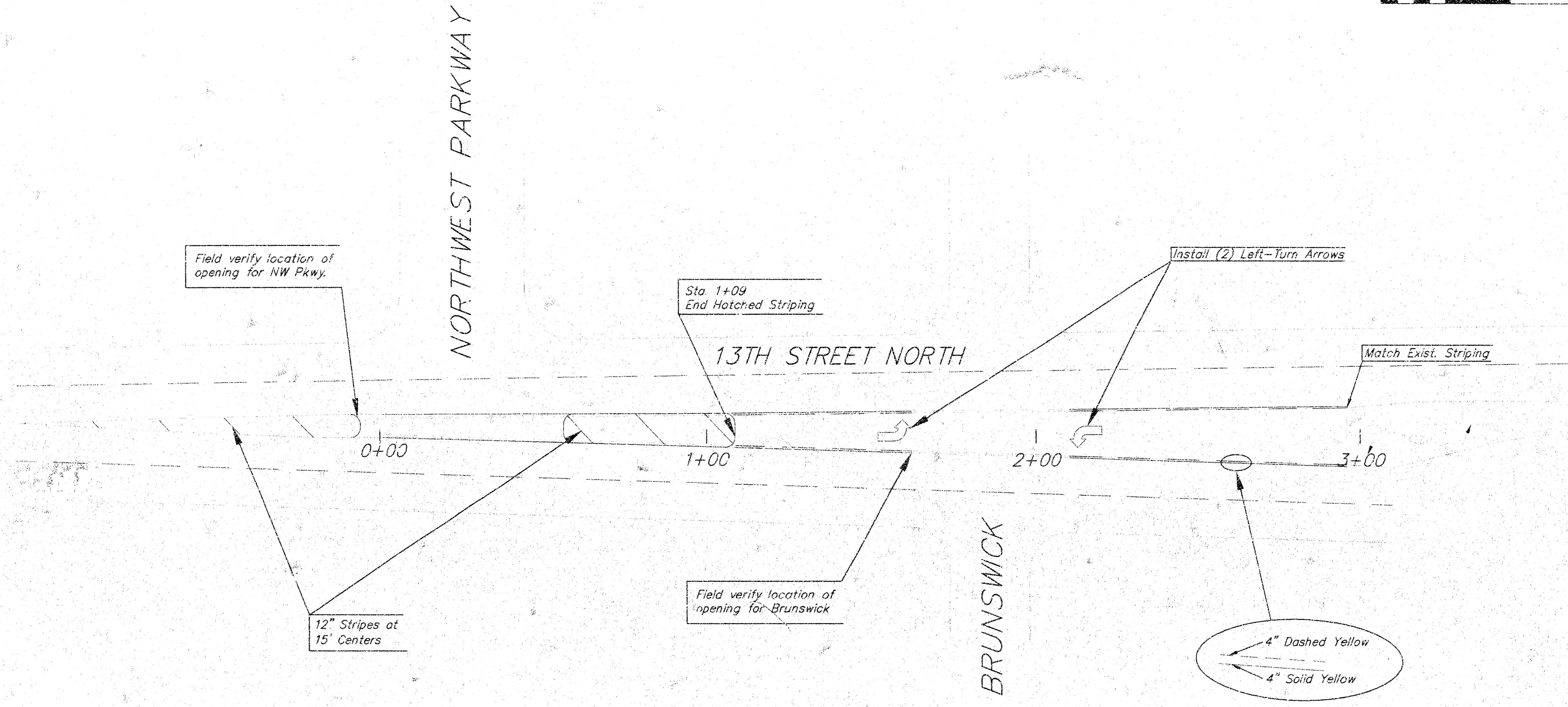
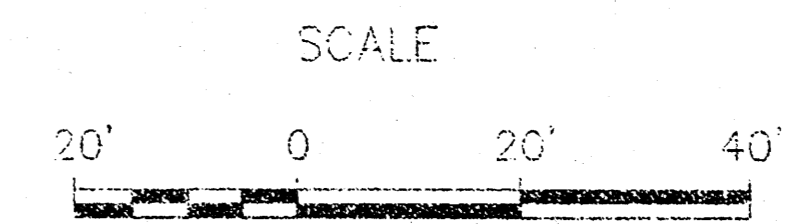
Typical Section
(Not To Scale)



Control Points

- #1 S 4 Corners
N: 5000
E: 5000
(Sta. -19+43.00)
- #2 SE Corner of 13th St. & Ridge Rd.
N: 5000
E: 7634.84
(Sta. 6+91.84)

	PROJECT NUMBER 121-FPP (807878)				AM. NO. 35154	13TH & RIDGE RD. MEDIAN PAVEMENT REMOVAL PLAN WICHITA, KANSAS		SHEET 2
	DESIGN 10	DRAWN KS	FILE plm1	DATE 8/99	SCALE 1" = 20'			OF 3



	PROJECT NUMBER		AW NO.	19TH & RIDGE ROAD MEDIAN		SHEET
	121-PPP (607879)		20154	STRIPING PLAN		
DESIGN	DRAWN	FILE	DATE	SCALE	WICHITA, KANSAS	
10	KS	strip	8/99	1" = 20'	3	