

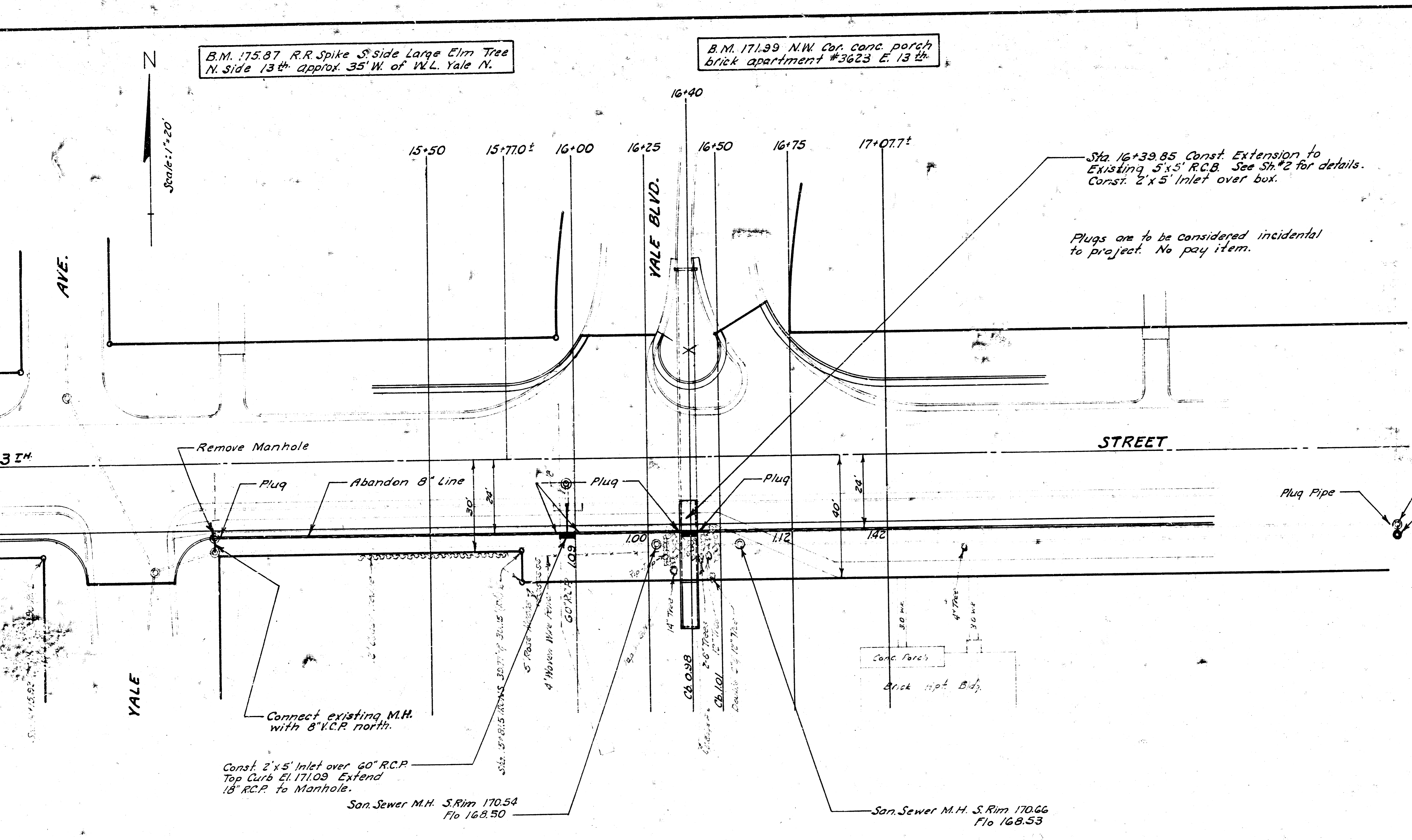
B.M. 175.87 R.R. Spike S. side Large Elm Tree
N. side 13th approx. 35' W. of W.L. Yale N.

B.M. 171.99 N.W. Cor. conc. porch
brick apartment #3623 E. 13th

Manholes & Inlets to be adjusted for grade

Station	Existing Elevation	New Elevation
1+82	176.04 ±	176.63
2+41	178.3 ±	178.07
5+40	S. Rim 183.34	183.27
8+99.5	S. Rim 191.76	192.09
12+60	S. Rim 180.24	181.15
14+25	S. Rim 172.65	172.95
14+75.4	S. Rim 172.70	172.26
15+97	S. Rim 170.90	171.14
19+90	S. Rim 179.23	178.18
23+89.3	193.5 ±	193.40
24+28	(Inlet) Curb 194.34	194.60

See Pavement Plan for Stations



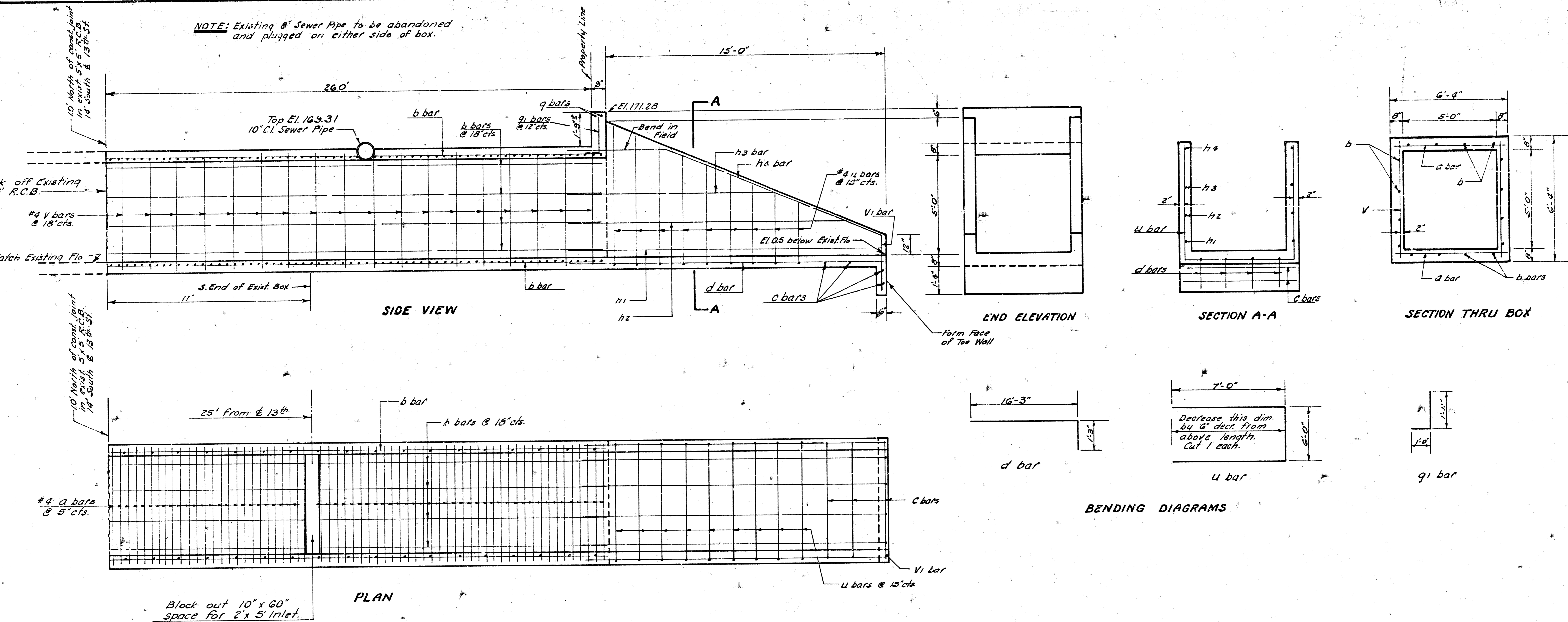
LIST OF MATERIALS		
Item	Quantity	Unit
Class A-AE Concrete	20.8	Cu. Yd.
Reinf. Steel	1195	Lb.
R.C.Box Removed	11	Lin. Ft.
Excavation & Compacted Fill *		
R/W Clearance (Rip-Rap, Trees, etc) *		
Unit Bid Items		
2' x 5' Inlets	2	Ea.
Brick Manholes	1	Ea.
8" V.C.P.	10	Lin. Ft.
18" R.C.P.	10	Lin. Ft.
Manholes & Inlet Adj. to grade	11	Ea.
Inlets Removed	2	Ea.
Manholes Removed	1	Ea.

* NOTE: All excavation, compacted fill and R/W clearance necessary for the satisfactory completion of the R.C.B. extension shall be considered incidental to same.

INCIDENTAL DRAINAGE
 13th St. from E.L. Hillside to E.L. Vesta Dr.
 B.E. SMITH CITY ENGINEER
 CITY OF WICHITA, KANSAS
 Date: June 1966 Project No. C16-1
 Sheet #1 of 2



NOTE: Existing 8" Sewer Pipe to be abandoned and plugged on either side of box.



REINF. STEEL SCHEDULE

Bar	a	b	c	d	q	q1	h1	h2	h3	h4	u	v	v1
Size	#4	#4	#4	#4	#4	#4	#4	#4	#4	#4	#4	#4	#4
No.	128	16	4	4	2	7	2	2	2	2	9	36	2
Length	5'-10"	26'-4"	6'-0"	17'-6"	5'-10"	*	16'-9"	14'-8"	11'-0"	17'-8"	*	5'-10"	2'-9"

* See bending diagrams for lengths.

5'x5' R.C. BOX CULVERT EXTENSION
 Sta. 16+39.85
 13th St. from E.L. Hillside to E.L. Vesta Dr.
 Project No. C16-1
 SH #2 of 2