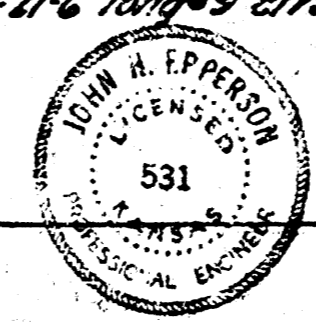
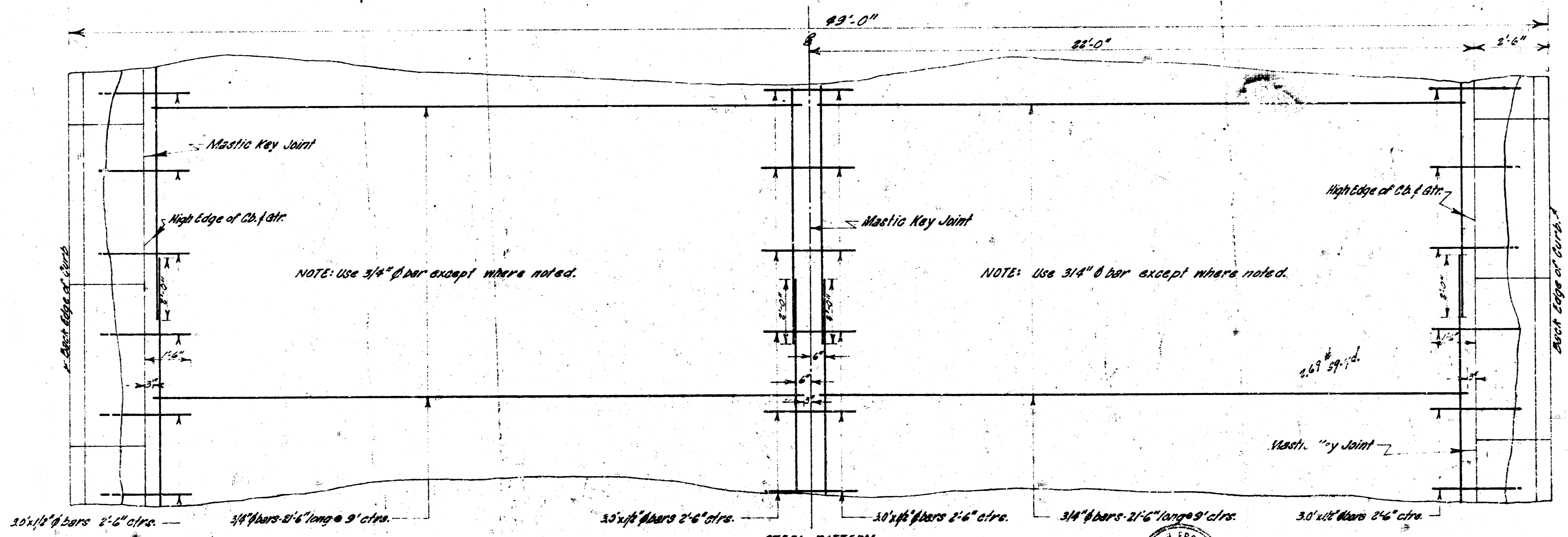
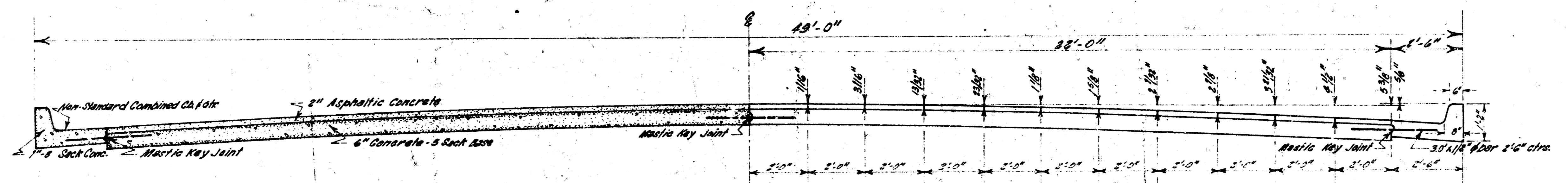
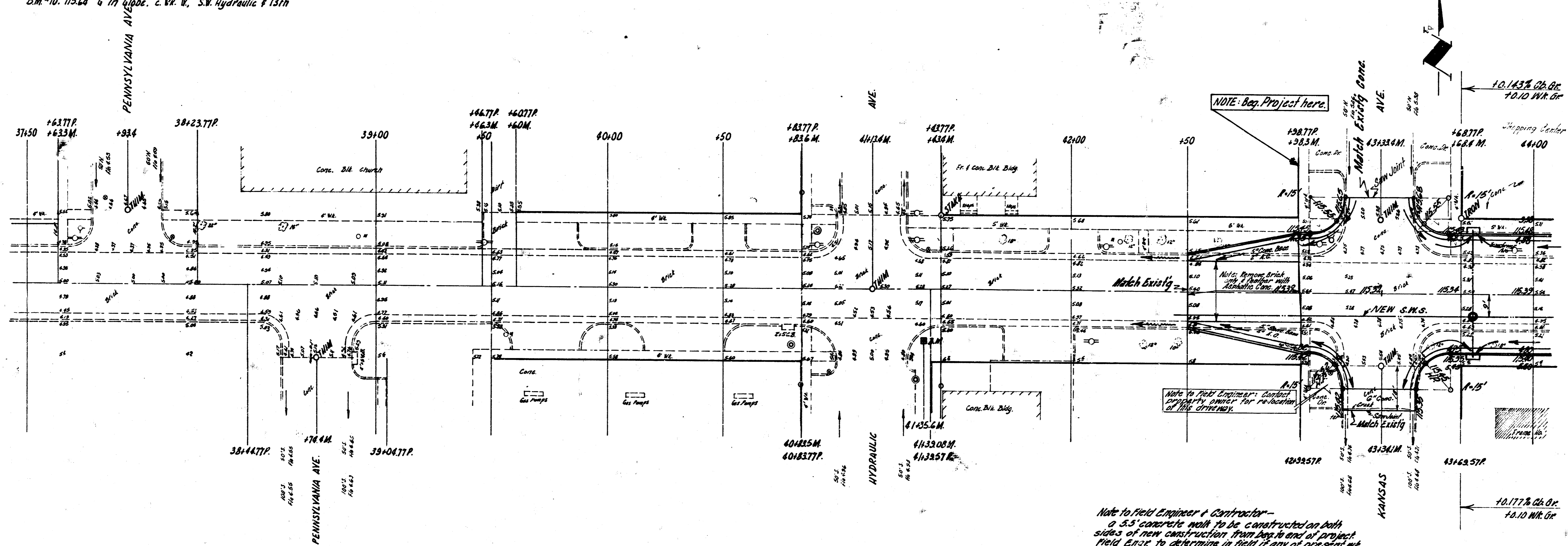


THIRTEENTH STREET
 W.L. KANSAS AVE. - W.L. HILLSIDE AVE.
 PROJECT NO. C19-14

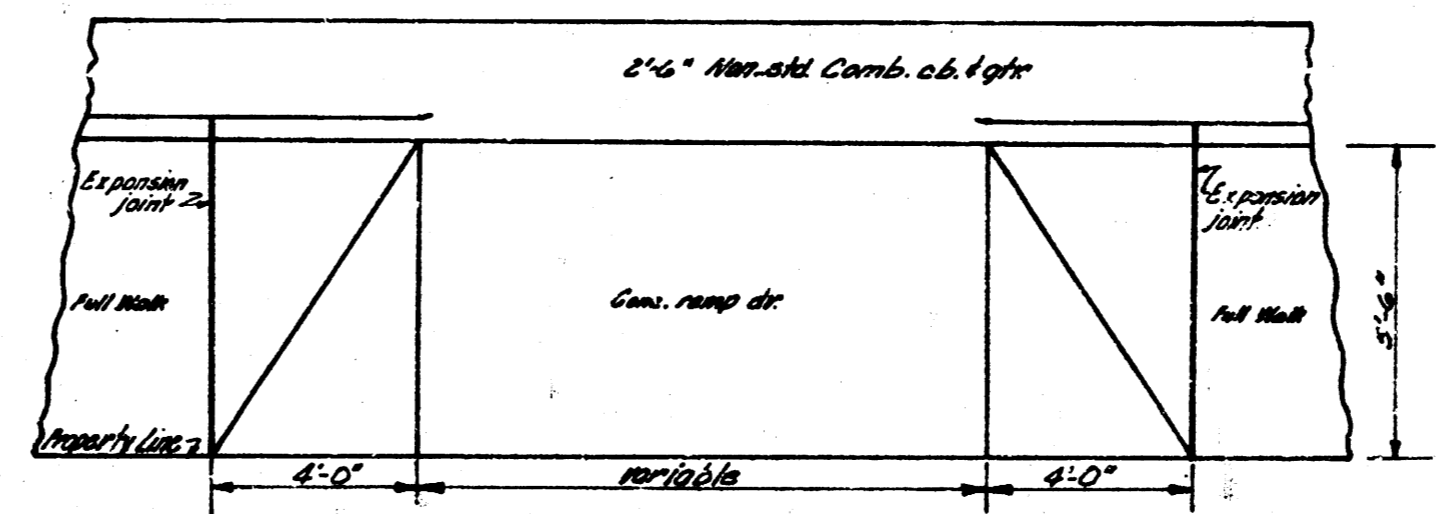


B.M. #8: 115.07 "6" in Globe V. Co. Pennsylvania, S.L. 13th
 B.M. #9: 116.02 Standard S.E. Hydraulic & 13th
 B.M. #10: 115.64 "6" in Globe, c. W. V., S.W. Hydraulic & 13th



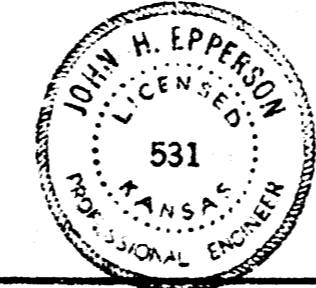
NOTE:
 Intersections @ Platt, Grove & Volusia Aves.
 to be completed & open to north-south traffic
 as quickly as possible.

Note to Field Engineer & Contractor -
 a 3.5' concrete walk to be constructed on both
 sides of new construction from beginning of project
 field Eng. to determine in field if any of present net
 is to remain in place.



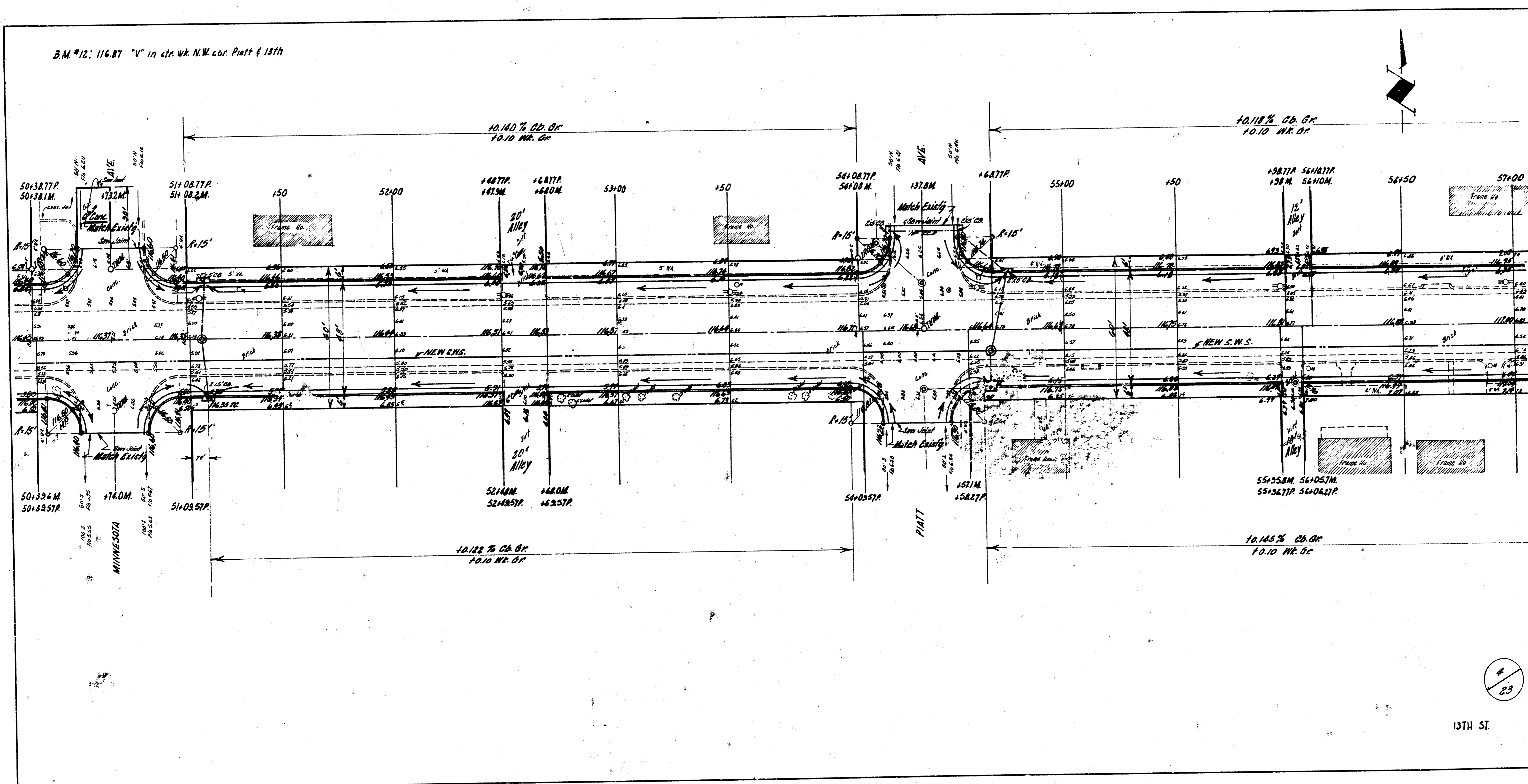
DETAIL OF TYPICAL CONCRETE DRIVE
 NO SCALE

THIRTEENTH STREET
 WL. KANSAS AVE. - WL. HILLSIDE AVE.
 44-2-48 ASPHALTIC CONC.
 CITY OF WICHITA - KANSAS
 B.E. SMITH CITY ENGINEER
 DATE: MAY 1959 PROJ. NO. C19-14



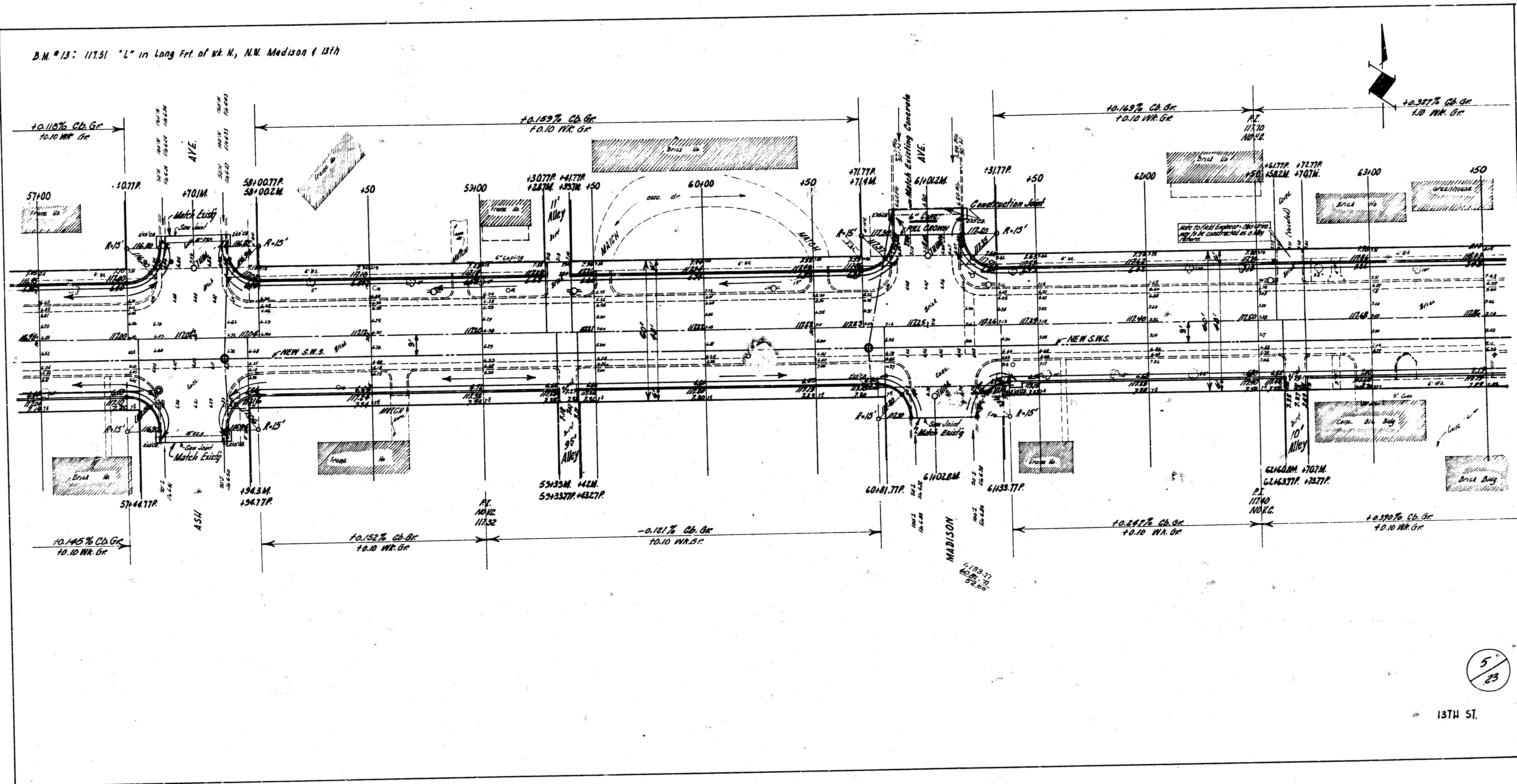
Survey of 1957
 City of Wichita
 Kansas

B.M. #12: 116.87 "V" in cte. wk. N.W. cor. Platt & 13th



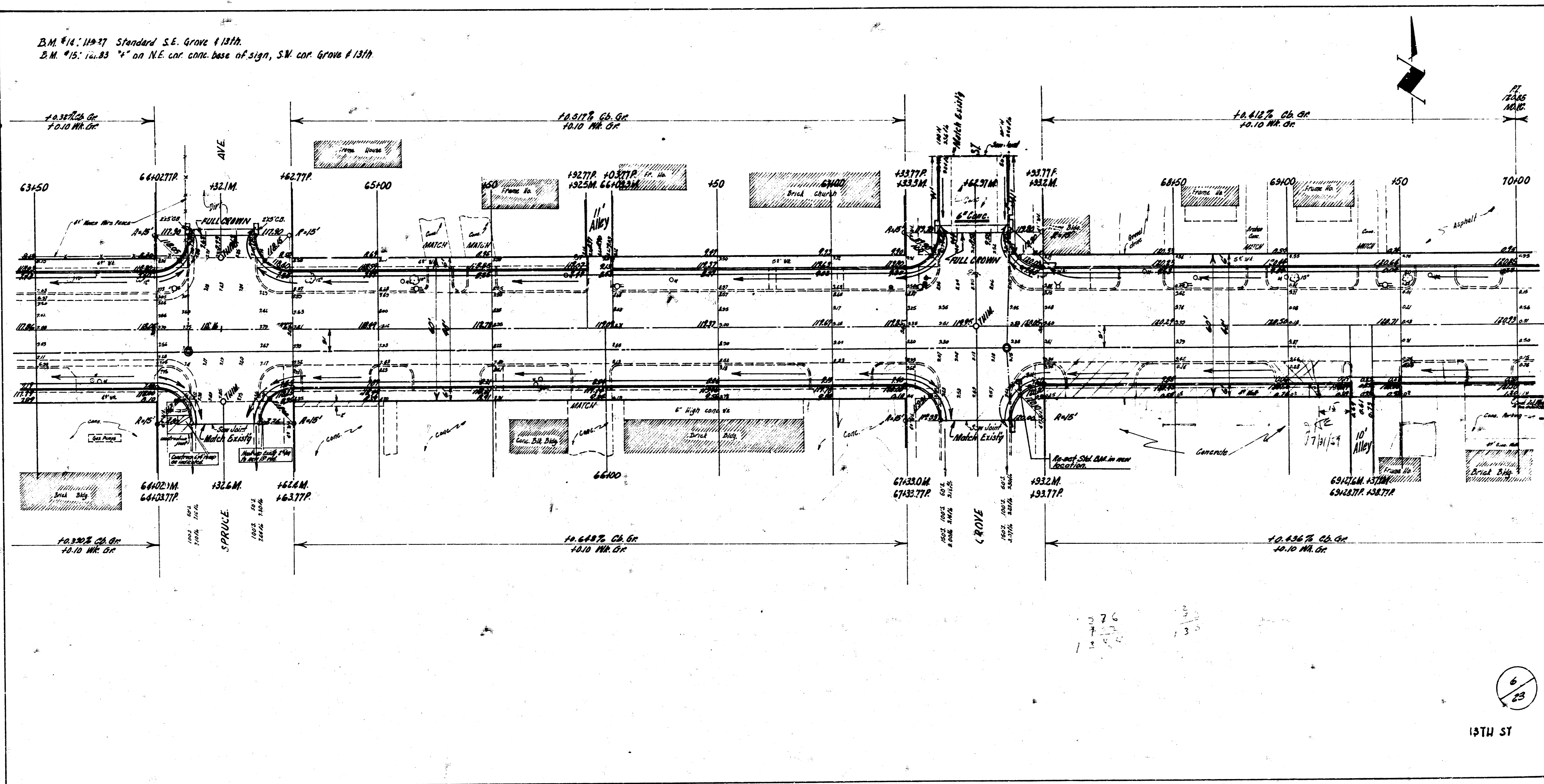
13TH ST.

B.M. #13: 117.51 "L" in Long Fret of sk N, N.W. Madison f 13th



13TH ST.

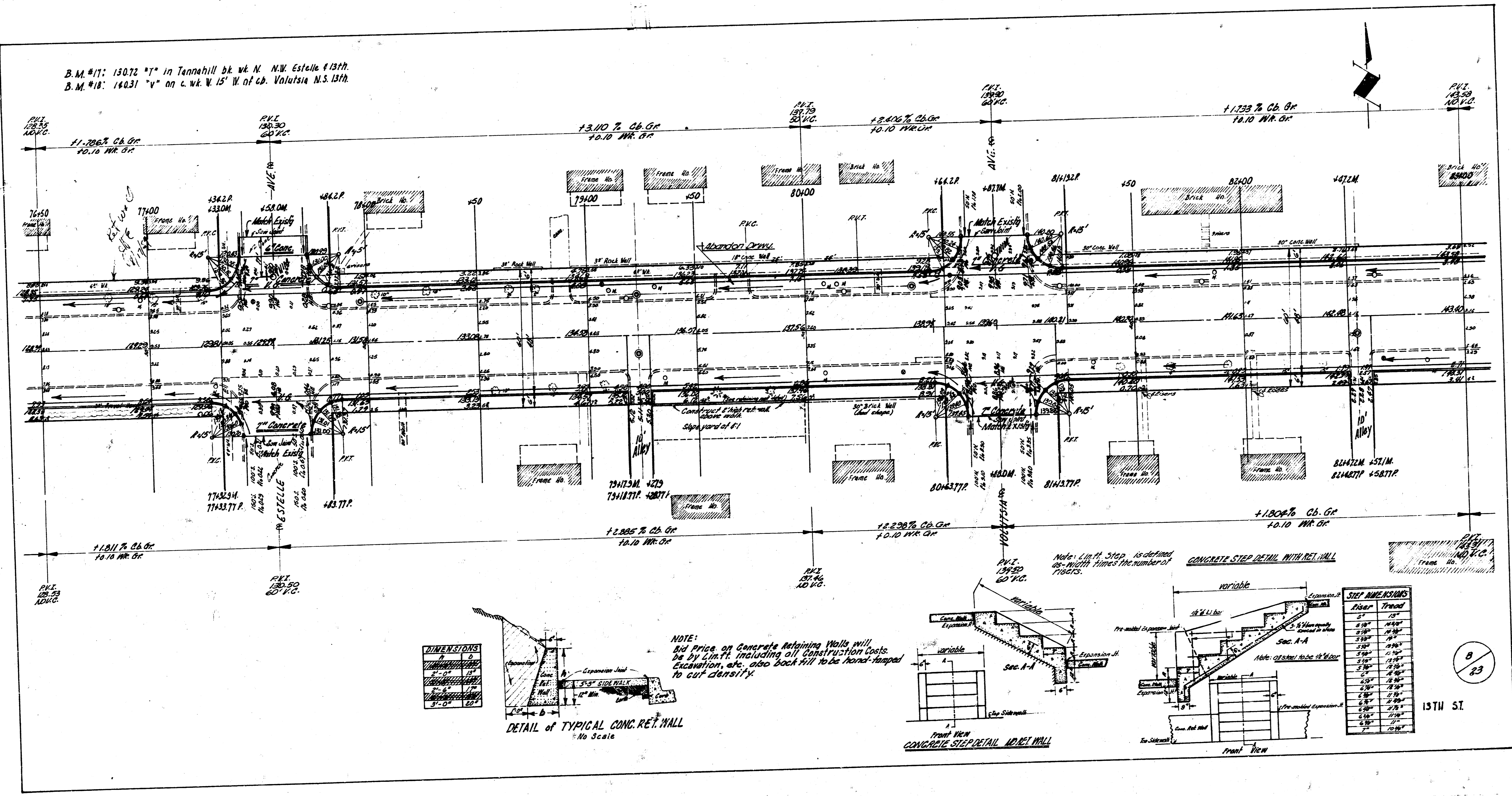
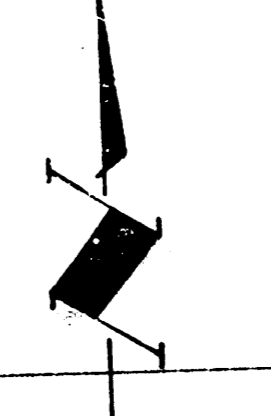
B.M. #14: 11+37 Standard S.E. Grove #1311.
B.M. #15: 12+83 "x" on N.E. cor. conc. base of sign, S.W. cor. Grove #1311



6/23

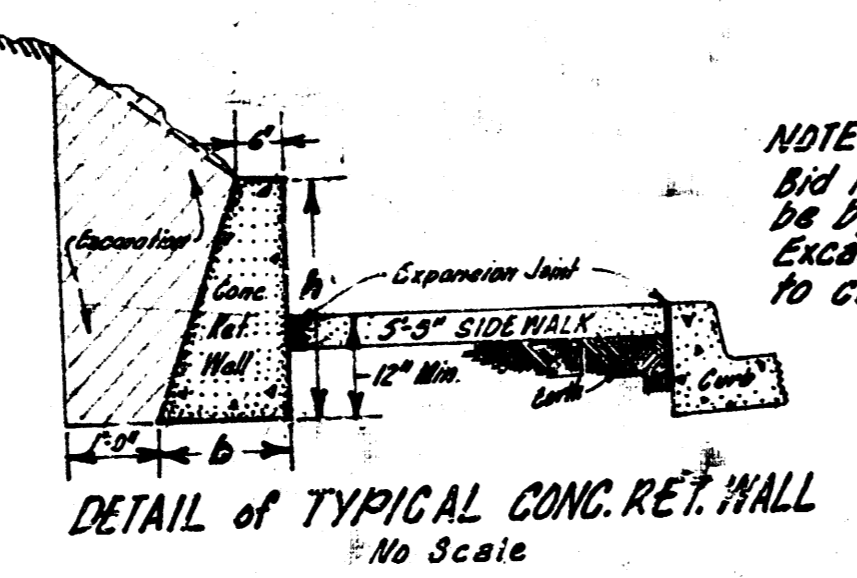
19TH ST

B.M. #17: 13072 "J" in Tannahill bk. W. N.W. Estelle #1377.
 B.M. #18: 14031 "V" on c. wk. W. 15' W. of cb. Volusia N.S. 1377.

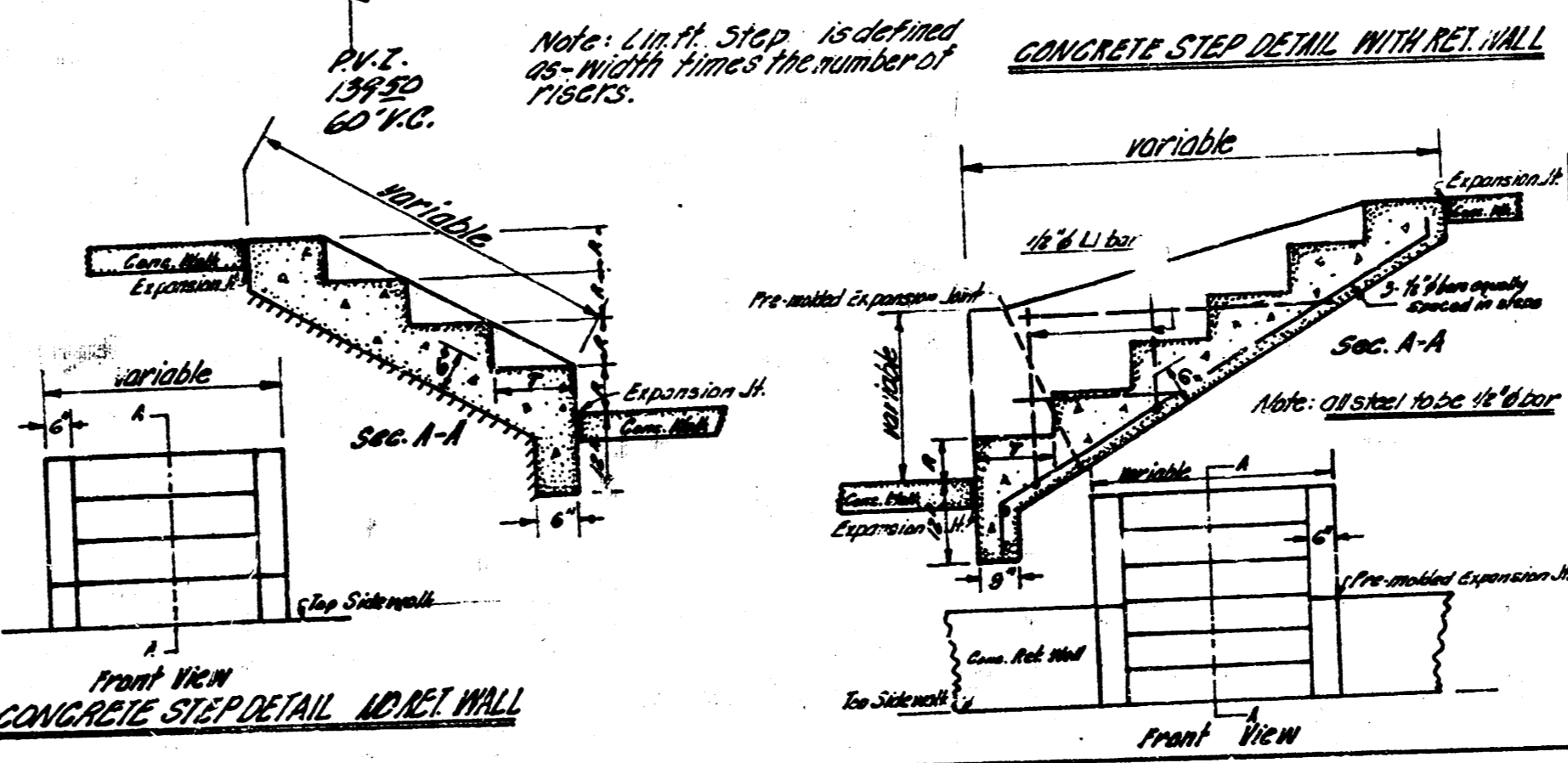


DIMENSIONS

1	1'-0"
2	1'-0"
3	1'-0"
4	1'-0"
5	1'-0"
6	1'-0"
7	1'-0"
8	1'-0"
9	1'-0"
10	1'-0"
11	1'-0"
12	1'-0"
13	1'-0"
14	1'-0"
15	1'-0"
16	1'-0"
17	1'-0"
18	1'-0"
19	1'-0"
20	1'-0"
21	1'-0"
22	1'-0"
23	1'-0"
24	1'-0"
25	1'-0"
26	1'-0"
27	1'-0"
28	1'-0"
29	1'-0"
30	1'-0"
31	1'-0"
32	1'-0"
33	1'-0"
34	1'-0"
35	1'-0"
36	1'-0"
37	1'-0"
38	1'-0"
39	1'-0"
40	1'-0"
41	1'-0"
42	1'-0"
43	1'-0"
44	1'-0"
45	1'-0"
46	1'-0"
47	1'-0"
48	1'-0"
49	1'-0"
50	1'-0"
51	1'-0"
52	1'-0"
53	1'-0"
54	1'-0"
55	1'-0"
56	1'-0"
57	1'-0"
58	1'-0"
59	1'-0"
60	1'-0"
61	1'-0"
62	1'-0"
63	1'-0"
64	1'-0"
65	1'-0"
66	1'-0"
67	1'-0"
68	1'-0"
69	1'-0"
70	1'-0"
71	1'-0"
72	1'-0"
73	1'-0"
74	1'-0"
75	1'-0"
76	1'-0"
77	1'-0"
78	1'-0"
79	1'-0"
80	1'-0"
81	1'-0"
82	1'-0"
83	1'-0"
84	1'-0"
85	1'-0"
86	1'-0"
87	1'-0"
88	1'-0"
89	1'-0"
90	1'-0"
91	1'-0"
92	1'-0"
93	1'-0"
94	1'-0"
95	1'-0"
96	1'-0"
97	1'-0"
98	1'-0"
99	1'-0"
100	1'-0"



NOTE: Bid Price on Concrete Retaining Walls will be by cu. ft. including all Construction Costs. Excavation, etc. also back fill to be hand-tamped to cut density.

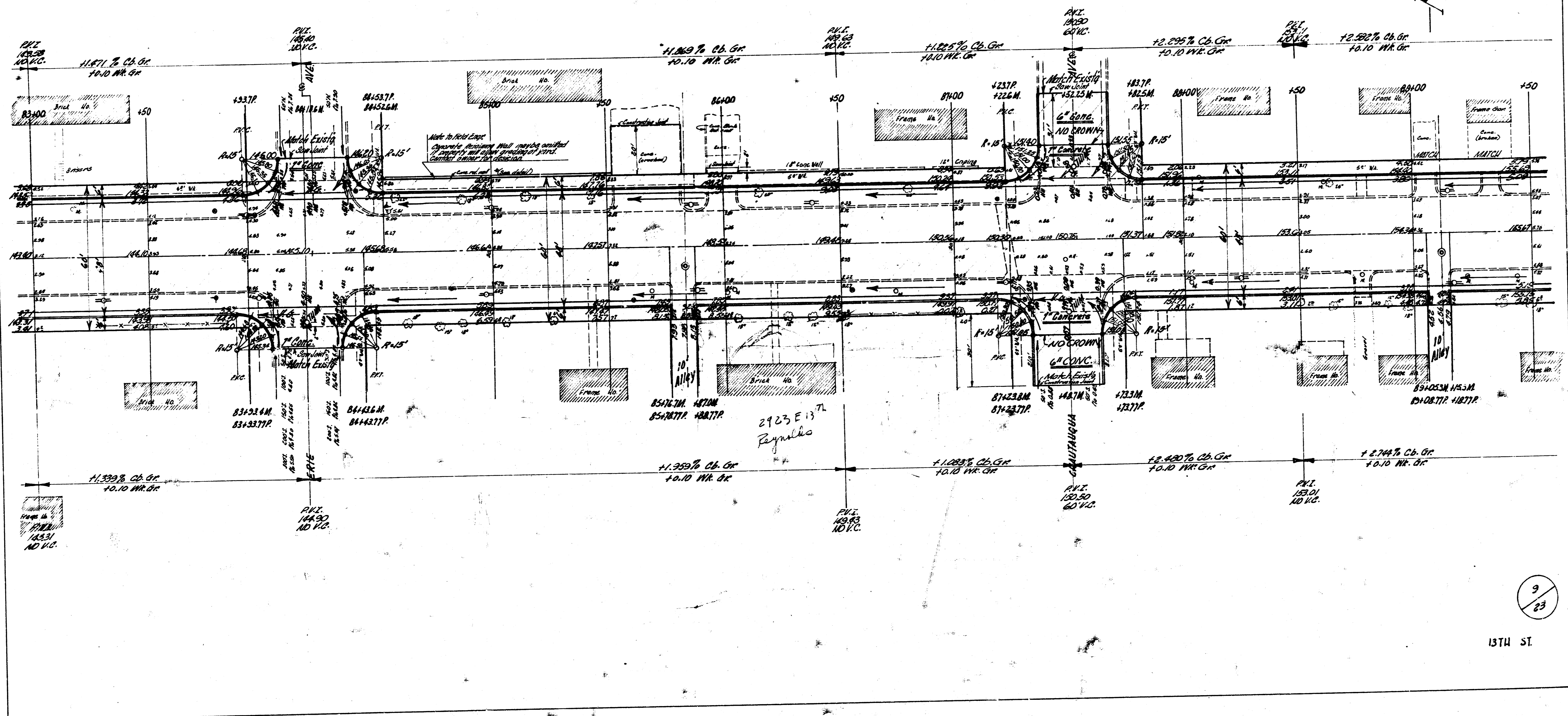


STEP DIMENSIONS

Step	Height	Width
1	2'-0"	1'-0"
2	2'-0"	1'-0"
3	2'-0"	1'-0"
4	2'-0"	1'-0"
5	2'-0"	1'-0"
6	2'-0"	1'-0"
7	2'-0"	1'-0"
8	2'-0"	1'-0"
9	2'-0"	1'-0"
10	2'-0"	1'-0"
11	2'-0"	1'-0"
12	2'-0"	1'-0"
13	2'-0"	1'-0"
14	2'-0"	1'-0"
15	2'-0"	1'-0"
16	2'-0"	1'-0"
17	2'-0"	1'-0"
18	2'-0"	1'-0"
19	2'-0"	1'-0"
20	2'-0"	1'-0"
21	2'-0"	1'-0"
22	2'-0"	1'-0"
23	2'-0"	1'-0"
24	2'-0"	1'-0"
25	2'-0"	1'-0"
26	2'-0"	1'-0"
27	2'-0"	1'-0"
28	2'-0"	1'-0"
29	2'-0"	1'-0"
30	2'-0"	1'-0"
31	2'-0"	1'-0"
32	2'-0"	1'-0"
33	2'-0"	1'-0"
34	2'-0"	1'-0"
35	2'-0"	1'-0"
36	2'-0"	1'-0"
37	2'-0"	1'-0"
38	2'-0"	1'-0"
39	2'-0"	1'-0"
40	2'-0"	1'-0"
41	2'-0"	1'-0"
42	2'-0"	1'-0"
43	2'-0"	1'-0"
44	2'-0"	1'-0"
45	2'-0"	1'-0"
46	2'-0"	1'-0"
47	2'-0"	1'-0"
48	2'-0"	1'-0"
49	2'-0"	1'-0"
50	2'-0"	1'-0"
51	2'-0"	1'-0"
52	2'-0"	1'-0"
53	2'-0"	1'-0"
54	2'-0"	1'-0"
55	2'-0"	1'-0"
56	2'-0"	1'-0"
57	2'-0"	1'-0"
58	2'-0"	1'-0"
59	2'-0"	1'-0"
60	2'-0"	1'-0"
61	2'-0"	1'-0"
62	2'-0"	1'-0"
63	2'-0"	1'-0"
64	2'-0"	1'-0"
65	2'-0"	1'-0"
66	2'-0"	1'-0"
67	2'-0"	1'-0"
68	2'-0"	1'-0"
69	2'-0"	1'-0"
70	2'-0"	1'-0"
71	2'-0"	1'-0"
72	2'-0"	1'-0"
73	2'-0"	1'-0"
74	2'-0"	1'-0"
75	2'-0"	1'-0"
76	2'-0"	1'-0"
77	2'-0"	1'-0"
78	2'-0"	1'-0"
79	2'-0"	1'-0"
80	2'-0"	1'-0"
81	2'-0"	1'-0"
82	2'-0"	1'-0"
83	2'-0"	1'-0"
84	2'-0"	1'-0"
85	2'-0"	1'-0"
86	2'-0"	1'-0"
87	2'-0"	1'-0"
88	2'-0"	1'-0"
89	2'-0"	1'-0"
90	2'-0"	1'-0"
91	2'-0"	1'-0"
92	2'-0"	1'-0"
93	2'-0"	1'-0"
94	2'-0"	1'-0"
95	2'-0"	1'-0"
96	2'-0"	1'-0"
97	2'-0"	1'-0"
98	2'-0"	1'-0"
99	2'-0"	1'-0"
100	2'-0"	1'-0"

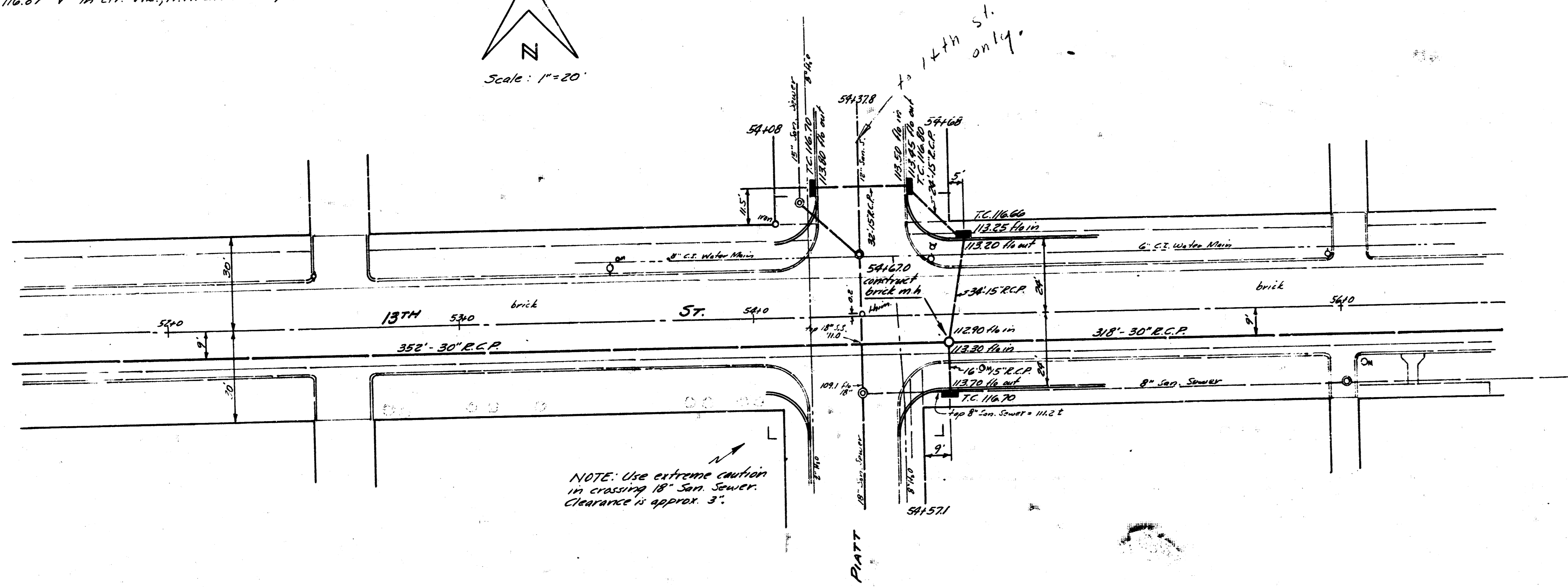
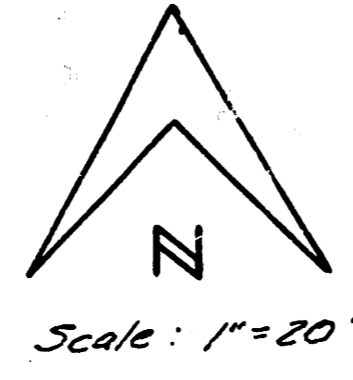
15TH ST.

B.M. #19: "G" in Globe S.S. into N.W. Erie @ 1911, Elev. 145.31
B.M. #20: "H" in Hurst c. wk. N., N.W. Chautauque @ 1911

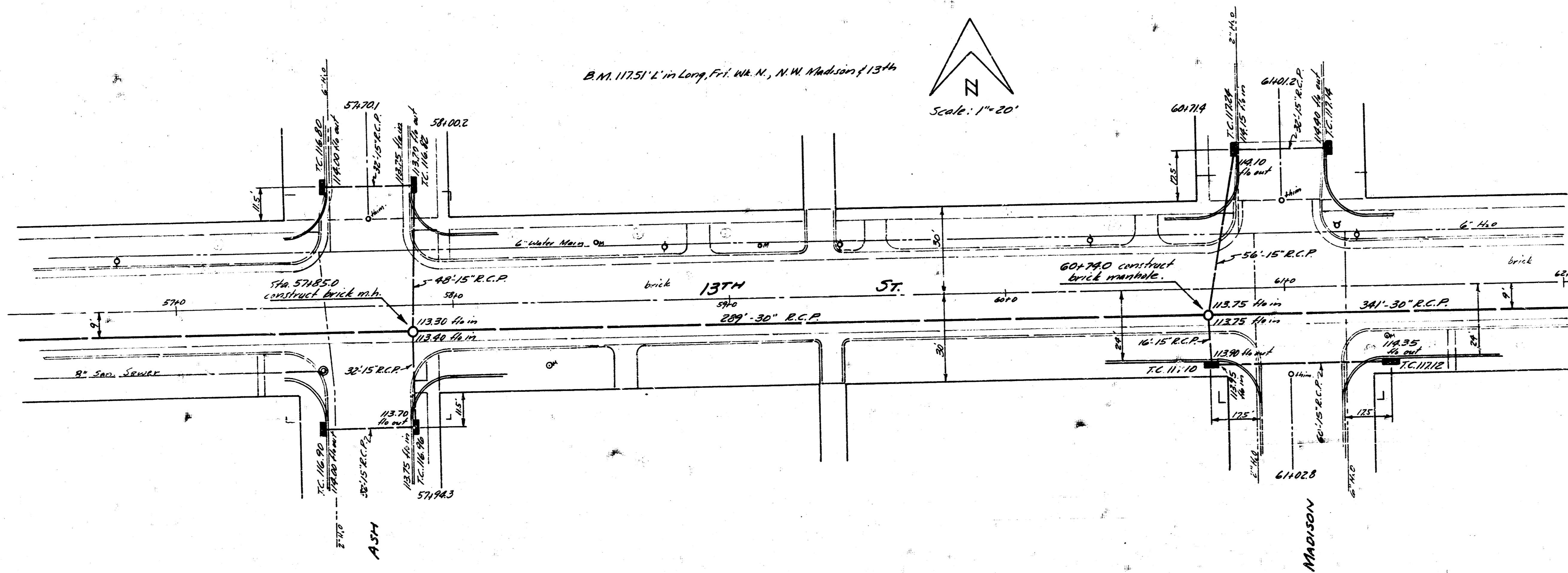


9
13TH ST.

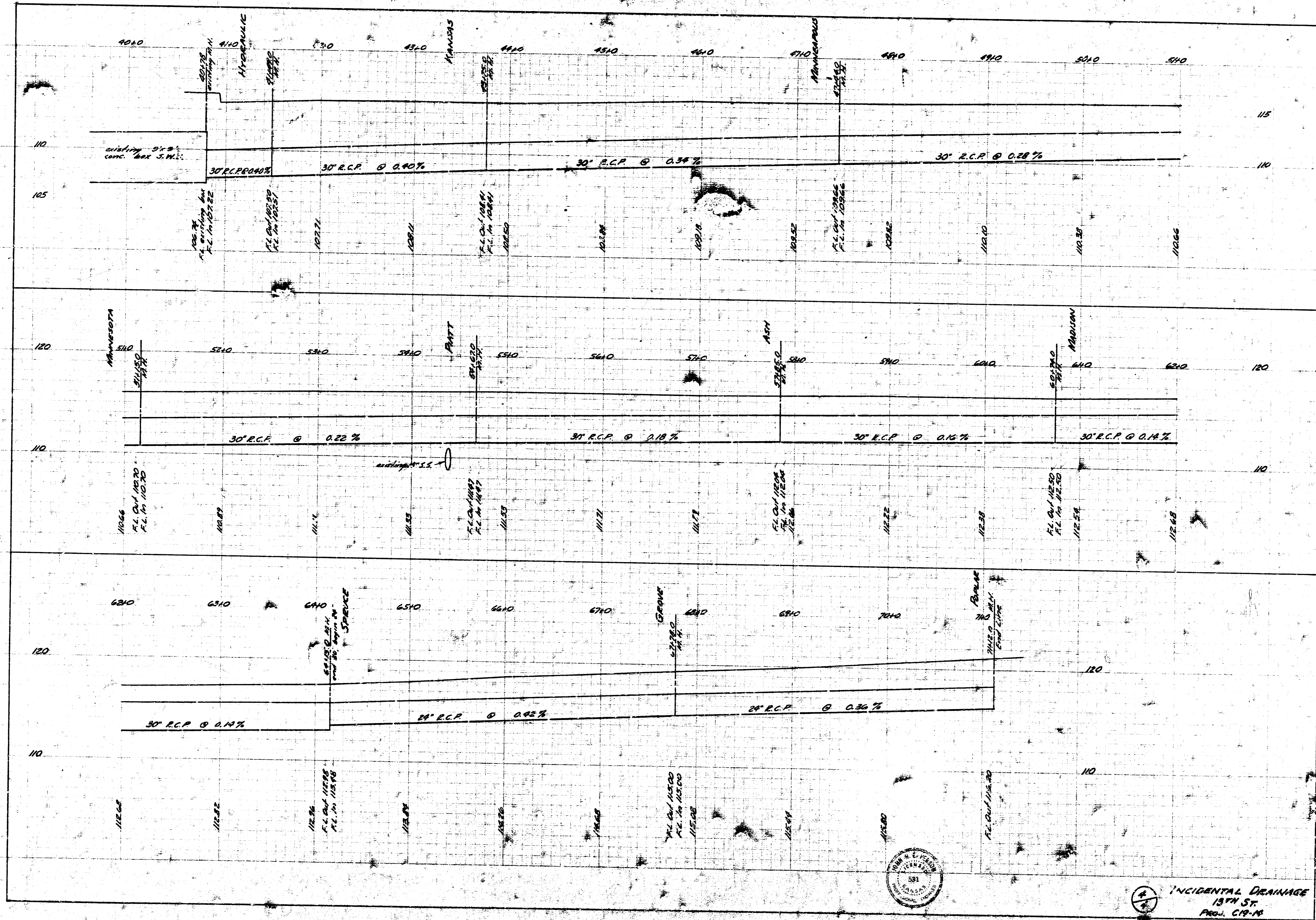
B.M. 116.87 'V' in ctr. Wk., N.W. Cor. Platt & 13th



B.M. 117.51 'L' in Long, Fri. Wk. N., N.W. Madison & 13th



INCIDENTAL DRAINAGE
13TH ST.
PROJ. C19-14
24



INCIDENTAL DRAINAGE
 13TH ST.
 PROJ. C19-19

10 e 5 1