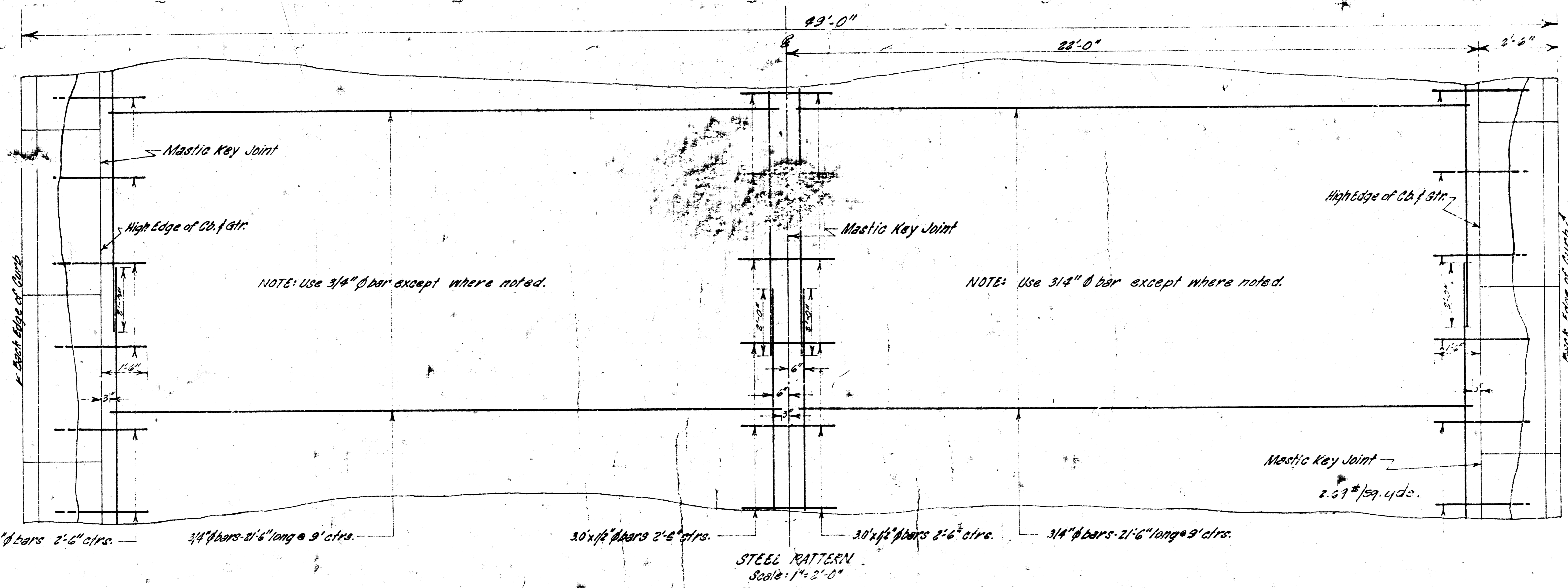
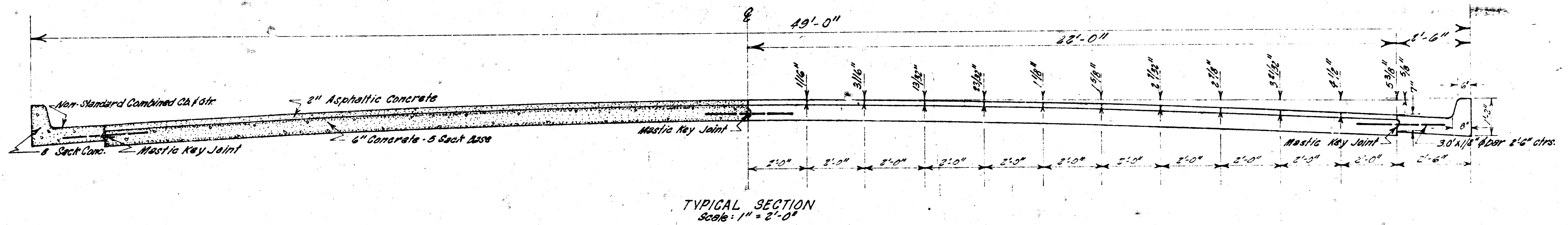


THIRTEENTH STREET

FROM E.L. HILLSIDE AVE. TO E.L. VESTA DRIVE
 B.E. SMITH CITY ENGINEER CITY OF WICHITA, KANSAS

PROJECT NO. C16-1



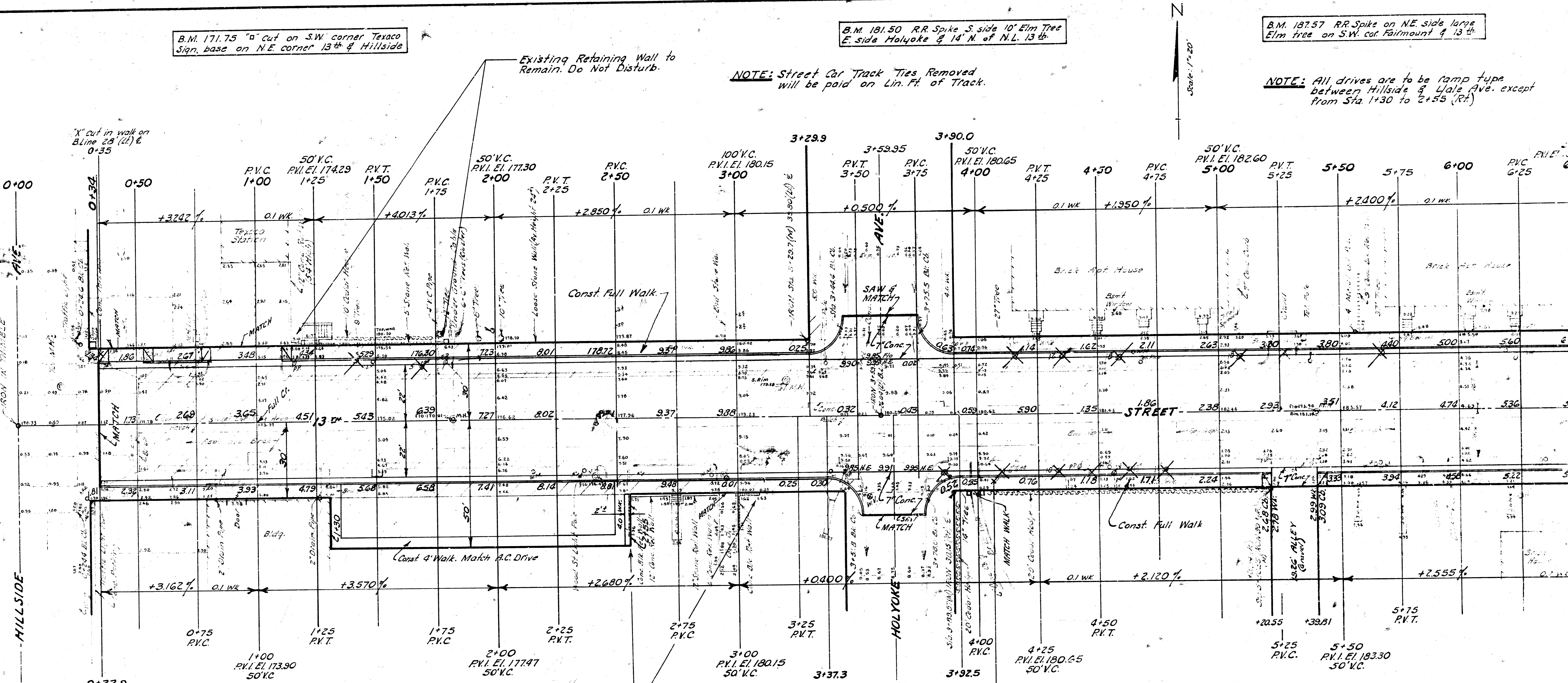
B.M. 171.75 "0" cut on S.W. corner Texaco Sign, base on N.E. corner 13th & Hillside

B.M. 181.50 R.R. Spike S. side 10' Elm Tree E. side Holyoke & 14' N. of N.L. 13th

B.M. 187.57 R.R. Spike on N.E. side large Elm tree on S.W. cut Fairmount & 13th

NOTE: Street Car Track Ties Removed will be paid on Lin. Ft. of Track.

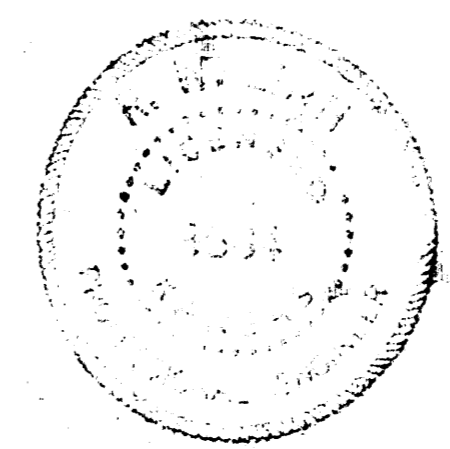
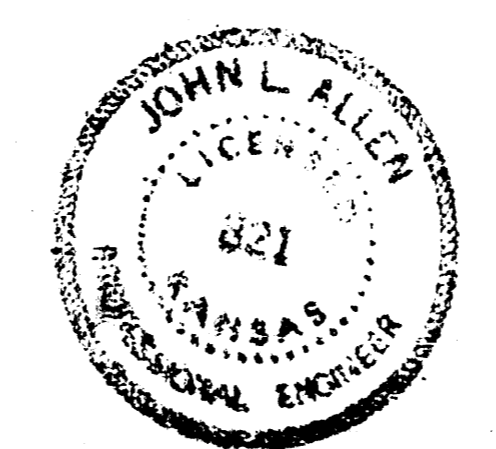
NOTE: All drives are to be ramp type between Hillside & Vesta Ave. except from Sta. 1+30 to 2+55 (Rt.)



	EXCAVATION	COMP. FILL
+1.5%	1660 Cu. Yds.	1392 Cu. Yds.
	166 " "	139 " "
	1826 Cu. Yds.	1531 Cu. Yds.
Est	600 " Borrow	
Total	2426 Cu. Yds.	

Borrow Material will be paid as cu. yds. excavation, determined by X-sec. at borrow material site, which will be located by contractor. Overhaul will be paid from site to project.

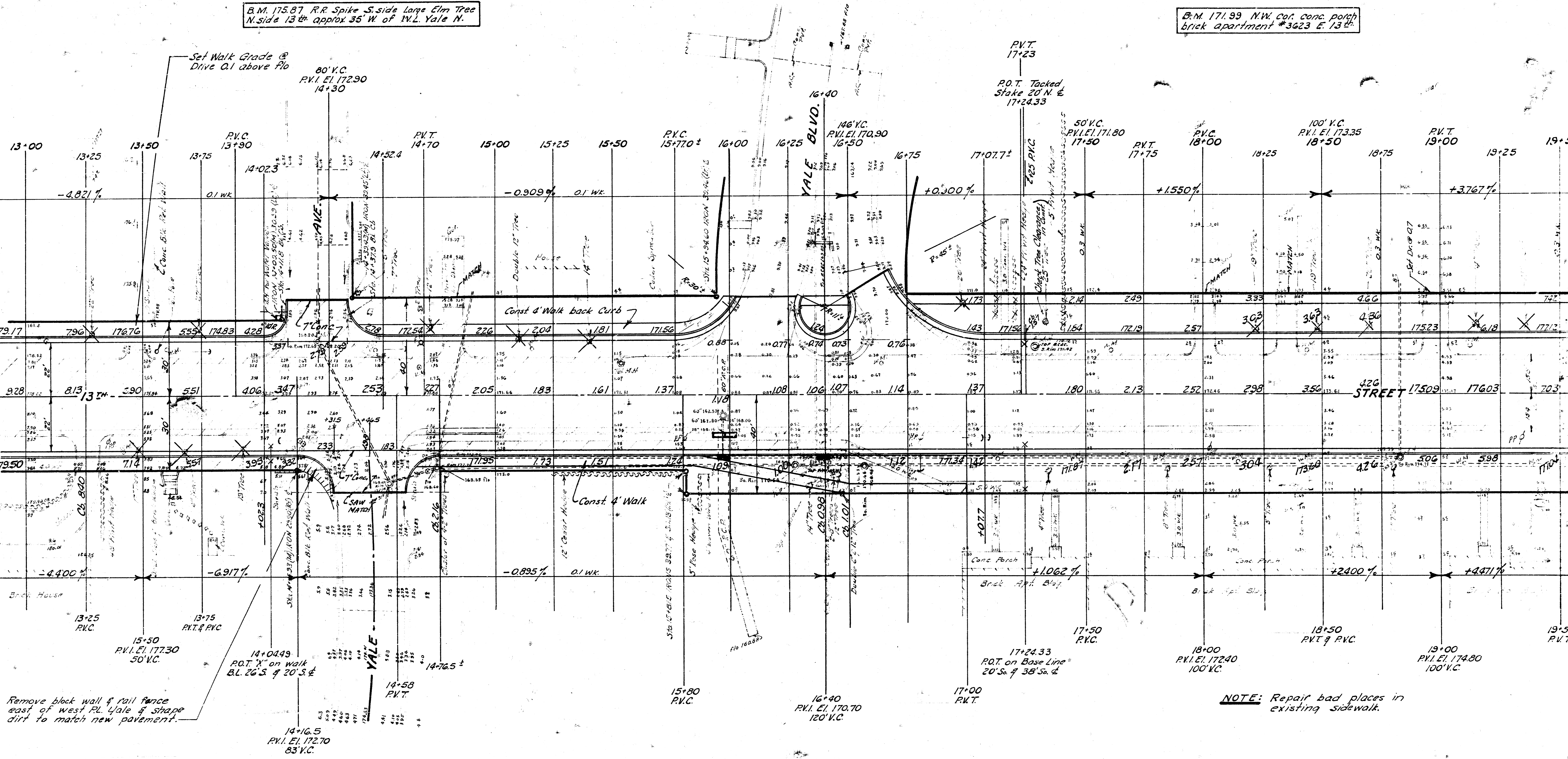
13th STREET
 FROM E.L. HILLSIDE AVE.
 TO E.L. VESTA DRIVE
 44'-2'-48" A.C. & Sidewalk
 B.E. SMITH CITY ENGINEER
 CITY OF WICHITA KANSAS
 Date: June 1966
 Project No. C16-



2/11

B.M. 175.87 R.R. Spike S. side Large Elm Tree
N. side 13th approx 35' W. of N.L. Yale N.

B.M. 171.99 N.W. cor. conc. porch
brick apartment #3623 E. 13th



Set Walk Grade @
Drive 0.1 above Plo

Remove block wall & rail fence
east of west PL Yale & shape
dirt to match new pavement.

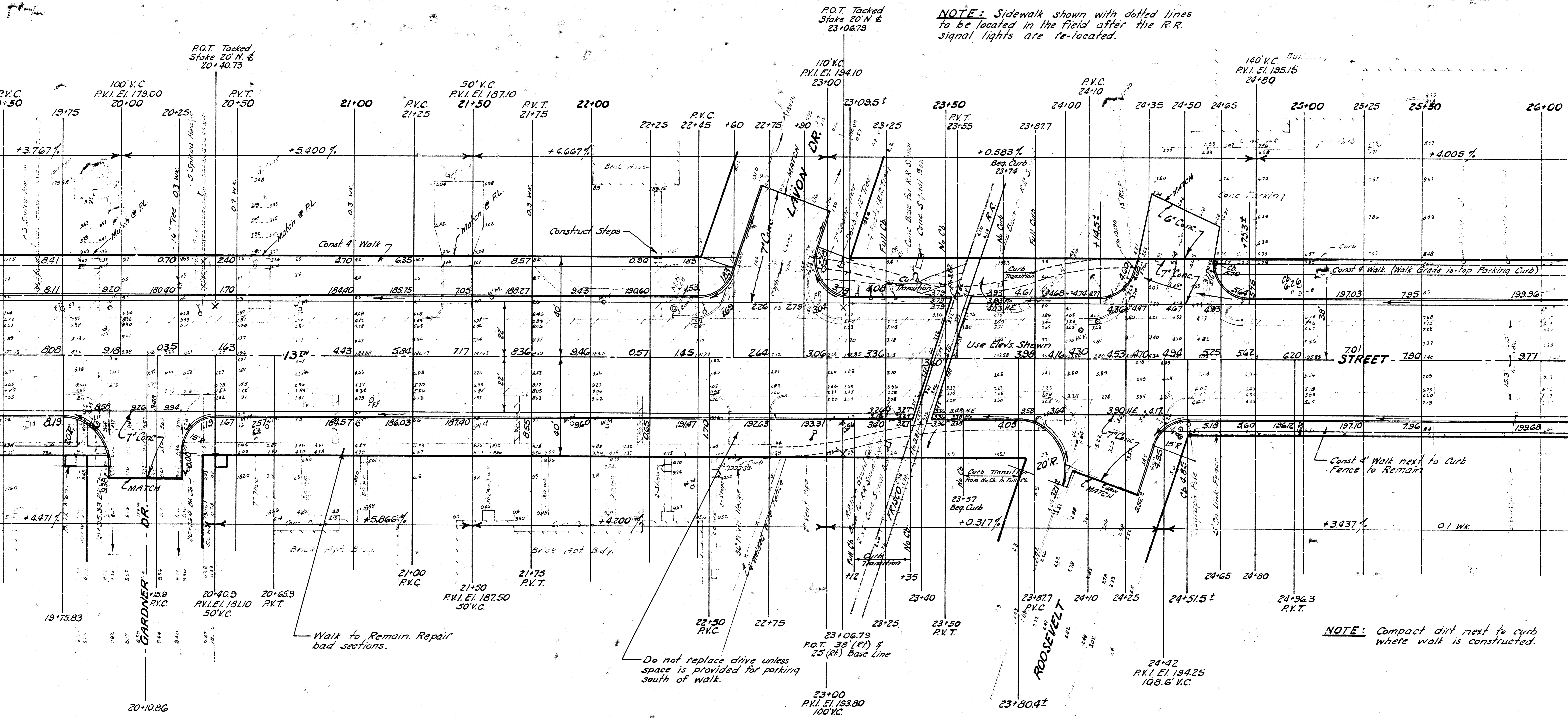
NOTE: Repair bad places in
existing sidewalk.

B.M. 179.55 "d" cut top W. curb
Gardner Dr. @ S.L. 13th Street

B.M. 189.89 N.E. corner Lona porch
Brick Apt. #3711 E. 13th Street

B.M. 193.28 "d" cut top west curb
Roosevelt 15' S. of S.L. 13th Street

NOTE: Sidewalk shown with dotted lines
to be located in the field after the R.R.
signal lights are re-located.



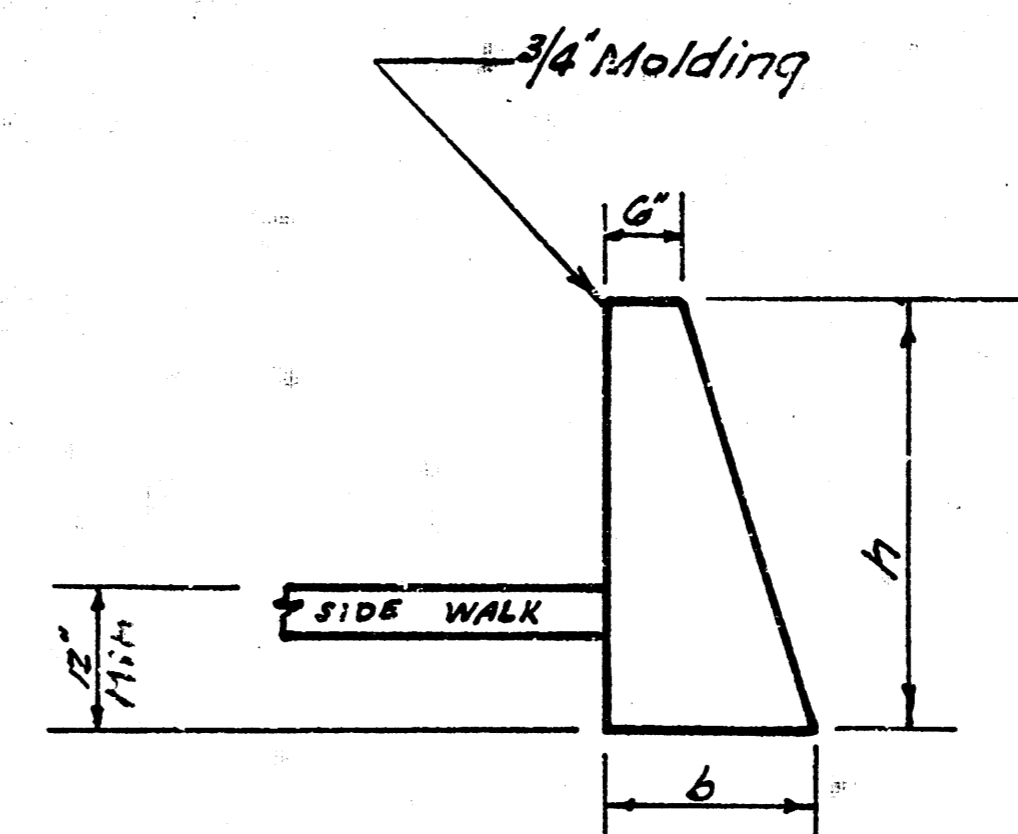
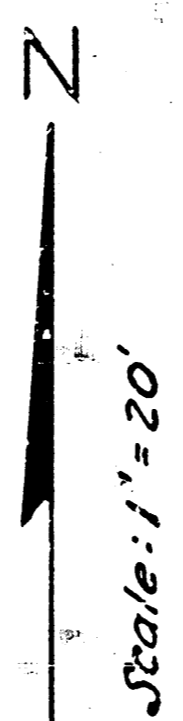
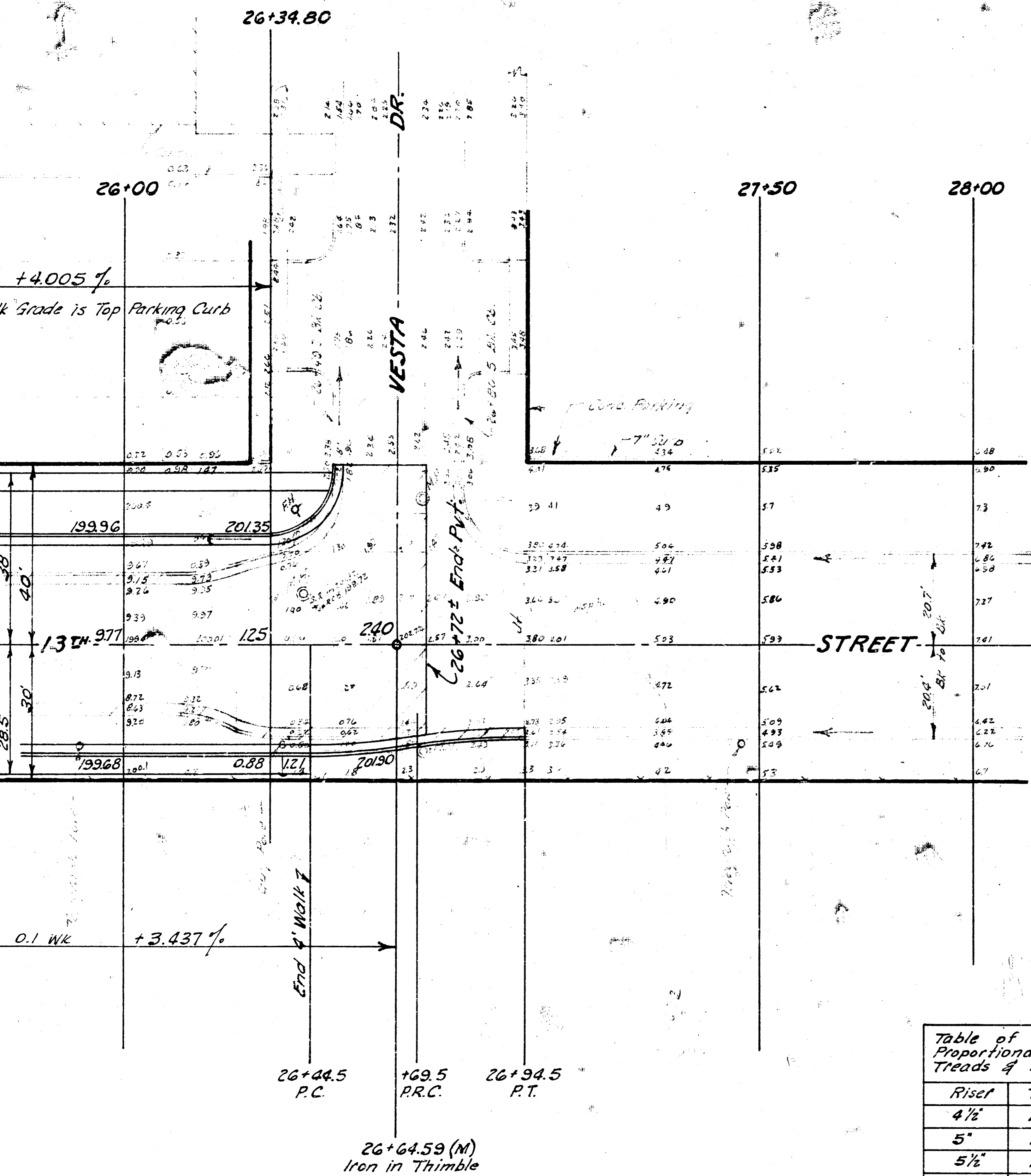
Walk to Remain. Repair
bad sections.

Do not replace drive unless
space is provided for parking
south of walk.

NOTE: Compact dirt next to curb
where walk is constructed.

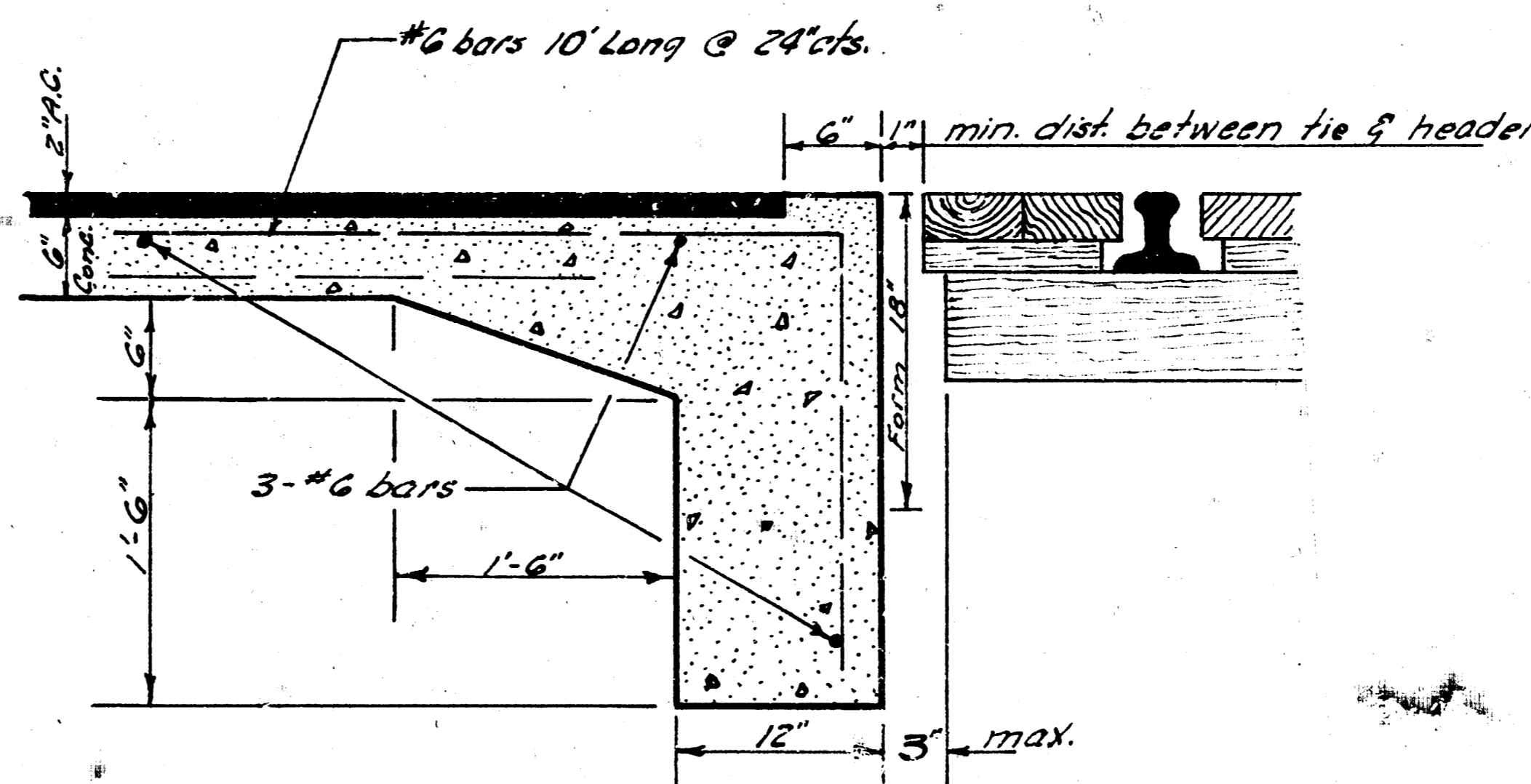
B.M. 20262 1" cut top conc. coping S.E. corner
conc. parking on N.W. cor. Vesta Dr. & 13th St.

Const. tar paper keyed const. joint @ 20' intervals
and 1" premolded exp. joint @ 100' (max) spacing



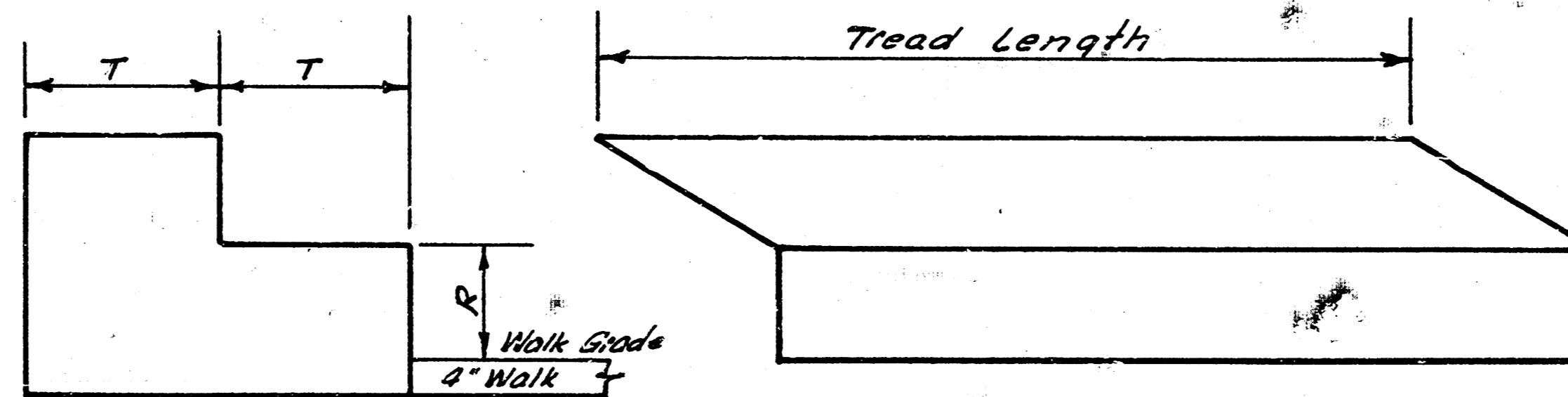
Dimensions		Cone/L.F.
h	b	Cu. Yds.
1'-9"	11"	.046
2'-0"	13"	.059
2'-3"	15"	.073
2'-6"	17"	.089
2'-9"	18 1/2"	.104
3'-0"	20"	.120

GRAVITY TYPE (Conc) RETAINING WALL



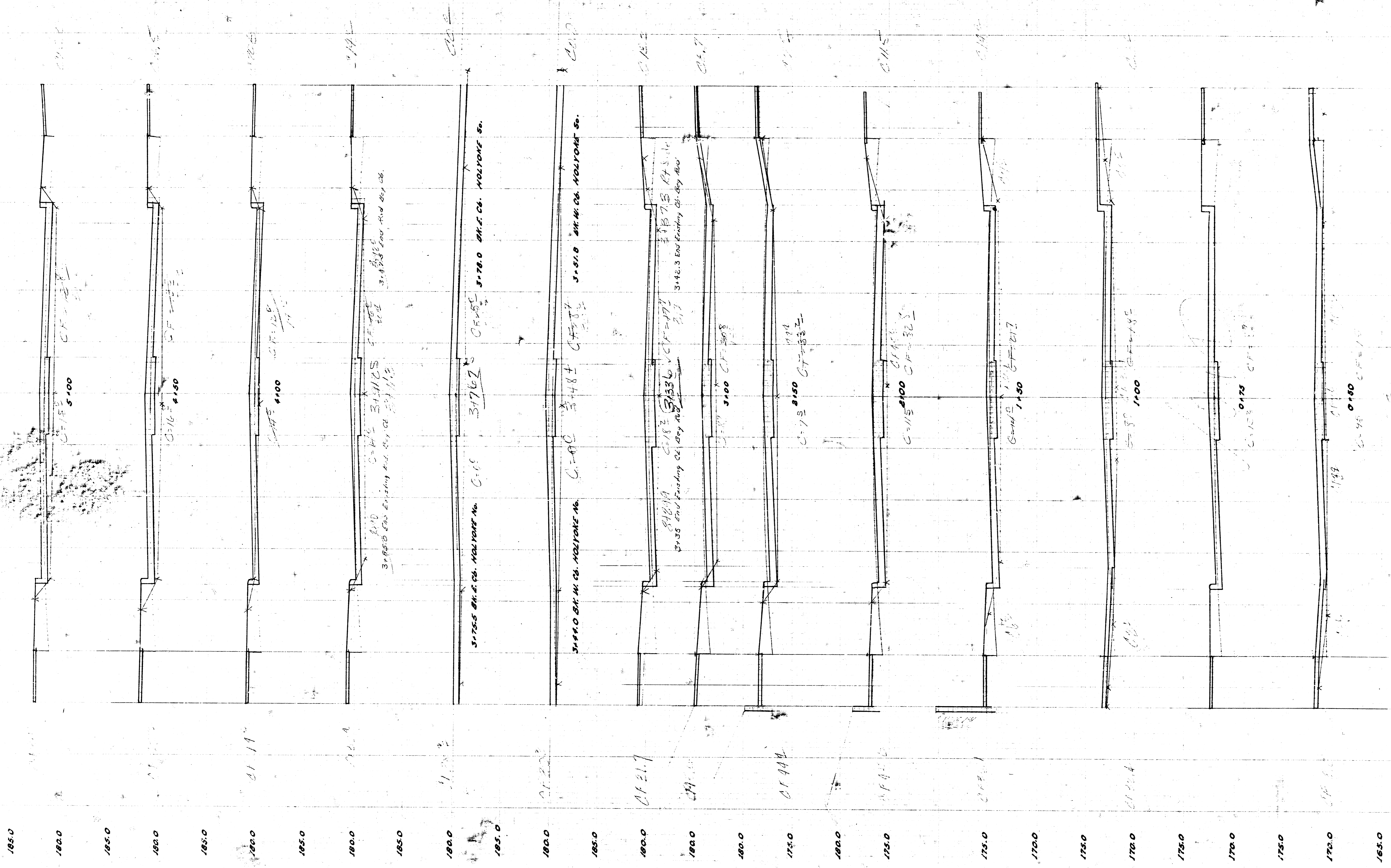
DETAIL OF CONC. HEADER FOR R.R. CROSSING
Not to Scale

Table of Proportional Treads & Risers	
Riser	Tread
4 1/2"	16 3/8"
5"	15"
5 1/2"	13 3/4"
6"	12 3/8"
6 1/2"	11 3/8"



END VIEW
CONC. STEPS
No Scale

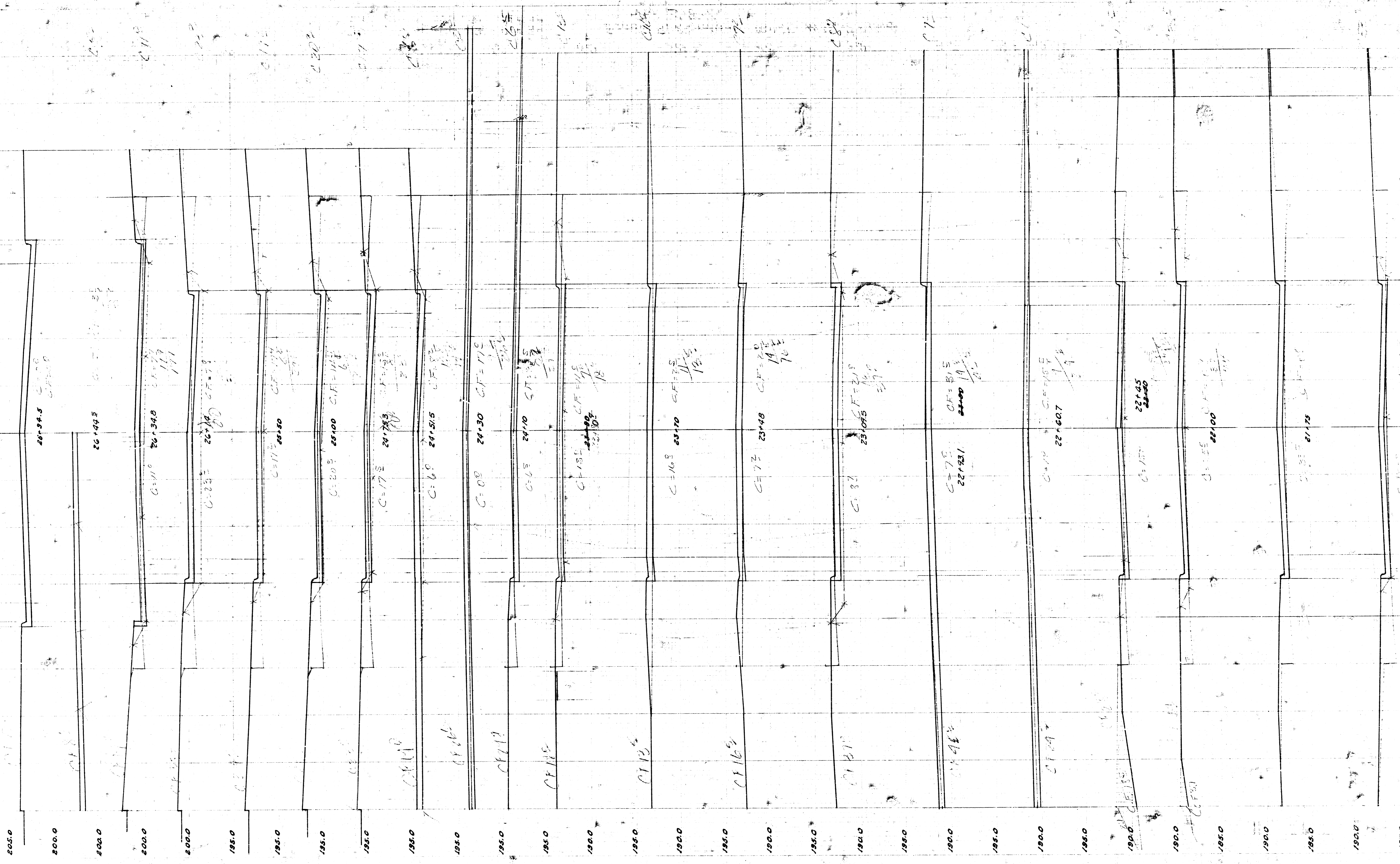
Bid Item for Lin. Ft. of Conc. Steps is the total
Lin. Ft. of Tread lengths constructed.



137th Street from E.L. Hillside
to E.L. Vesta Dr.

C 16-1

7/11



13th Street from E.L. Hillside
to E.L. Vesta Dr
C 16-1

21.50

185.0