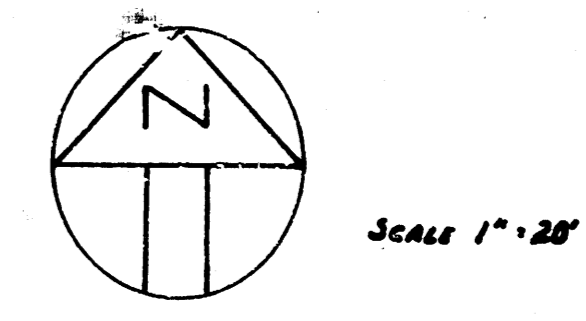
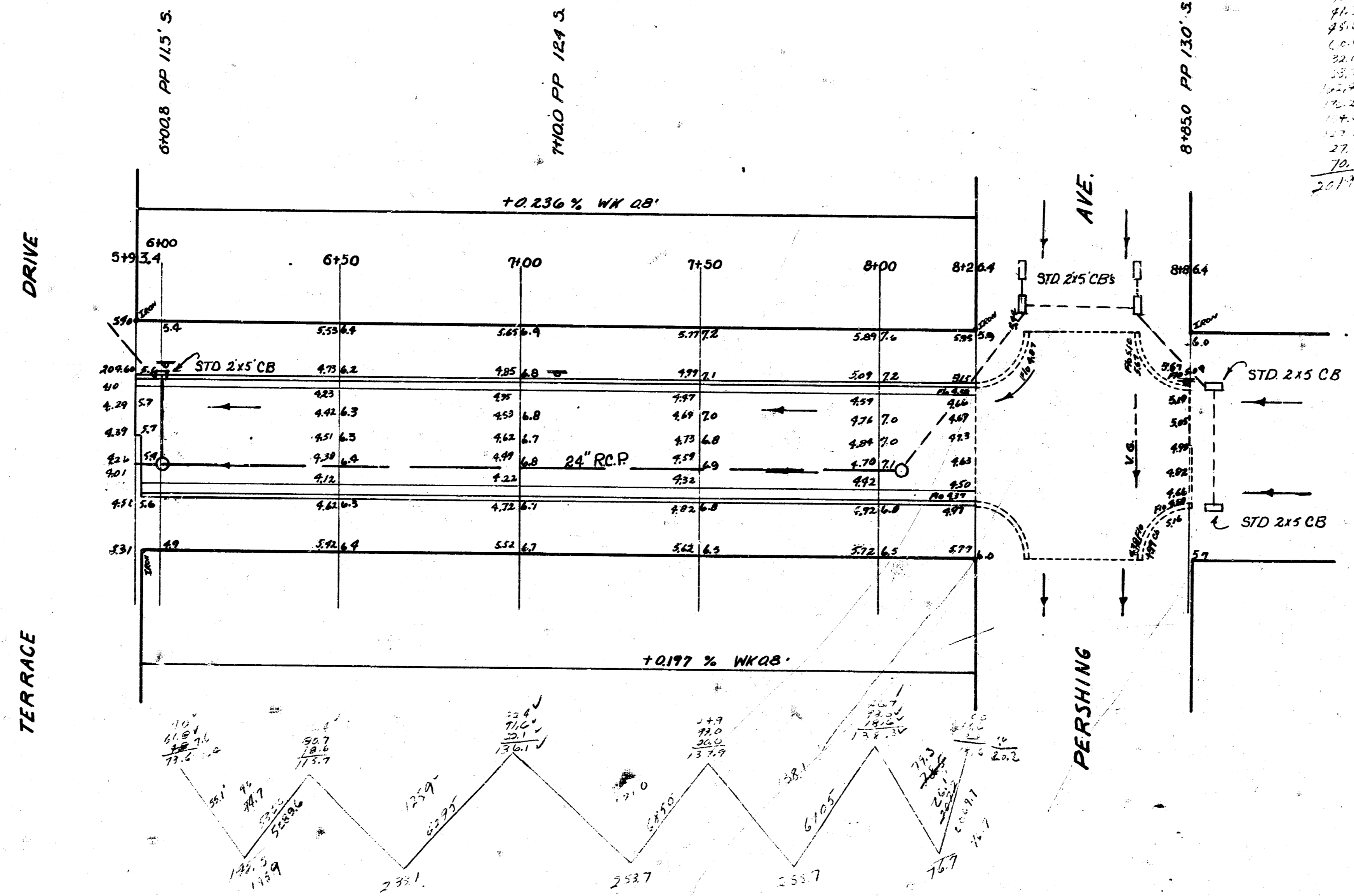


G-3

BM 202.05 "M" in Mueller fire plug NW Cor. 14<sup>th</sup> & Belmont

Chaining E on N R

Ref	27.6
148.5	27.6
255.1	27.6
258.7	27.6
258.7	27.6
76.7	27.6
41.1	27.6
41.3	27.6
45.6	27.6
6.6	27.6
52.0	27.6
13.7	27.6
12.2	27.6
14.4	27.6
17.3	27.6
27.6	27.6
70.0	27.6
201.7	27.6

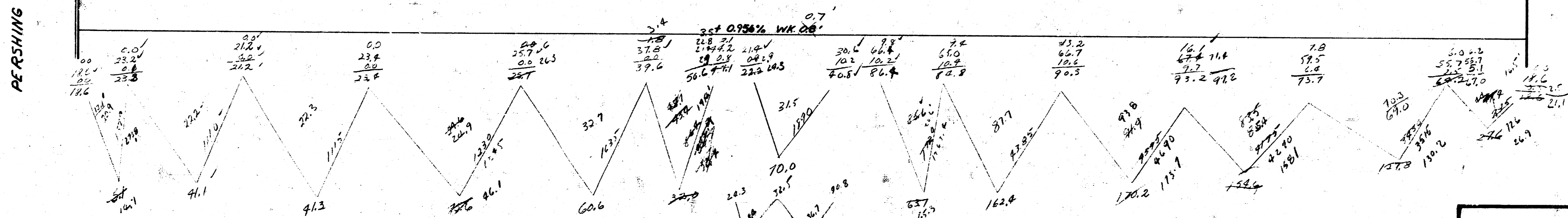
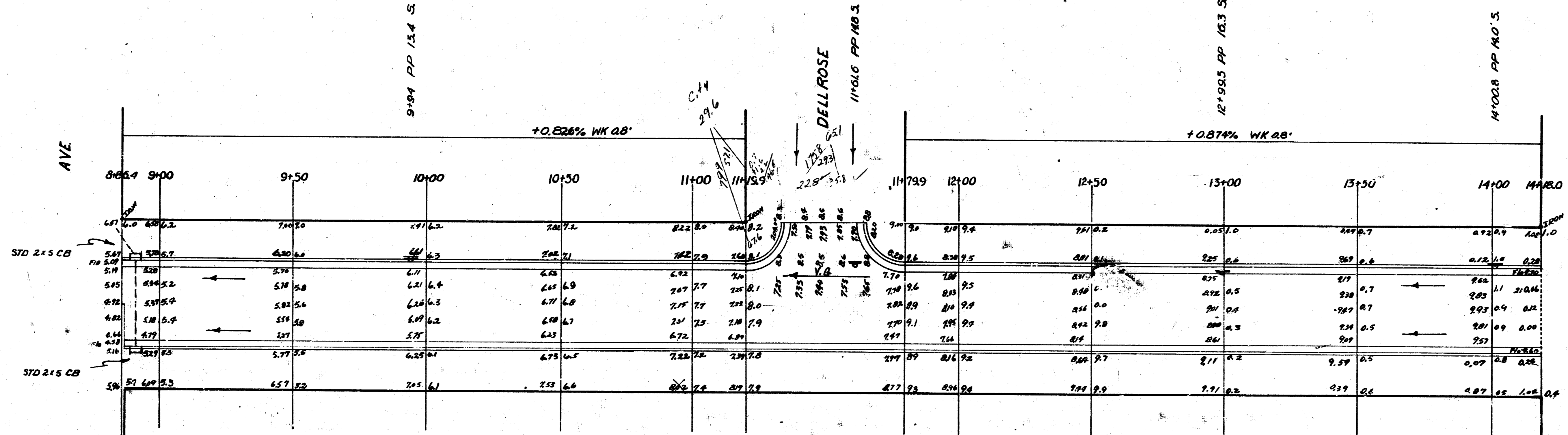


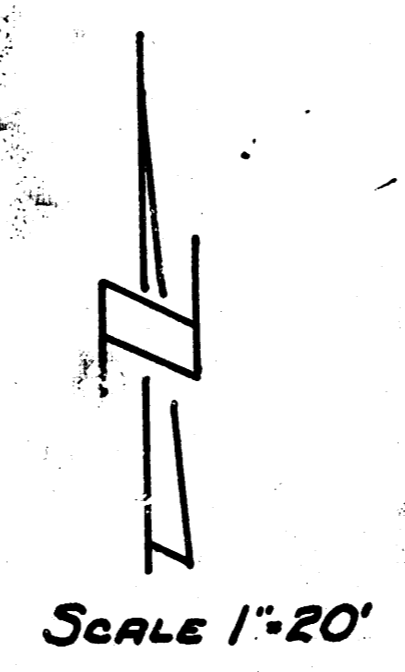
**14<sup>TH</sup> ST.**  
 EL TERRACE DRIVE TO W. OLIVER  
 26-2-30 A.C.  
 CITY OF WICHITA KANSAS  
 LK WHITE CITY ENGINEER  
 JAN 1952 Prod. No. CII-259



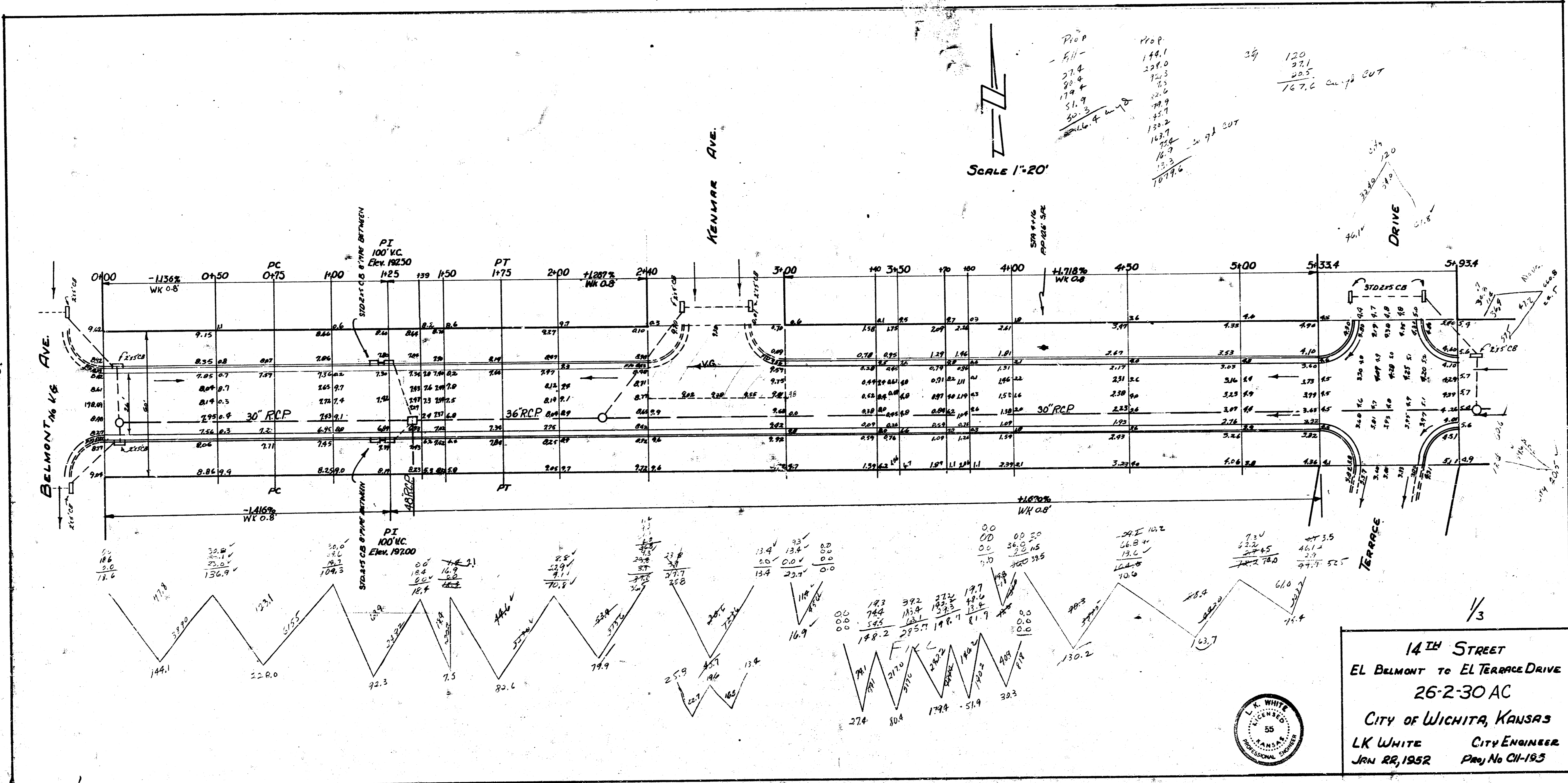
1  
2

BM 209.25 E edge metal base cap Standard Oil Co. Sign 137th & Oliver  
 DN 212.74 "M" in Mueller fire plug SE Cor. 14th & Pershing





Prop  
 144.1  
 228.0  
 144.1  
 120  
 22.1  
 22.5  
 76.76 cut



1/3

14<sup>TH</sup> STREET  
 EL BELMONT TO EL TERRACE DRIVE  
 26-2-30 AC  
 CITY OF WICHITA, KANSAS  
 LK WHITE CITY ENGINEER  
 JAN 22, 1952 Proj No CH-195

