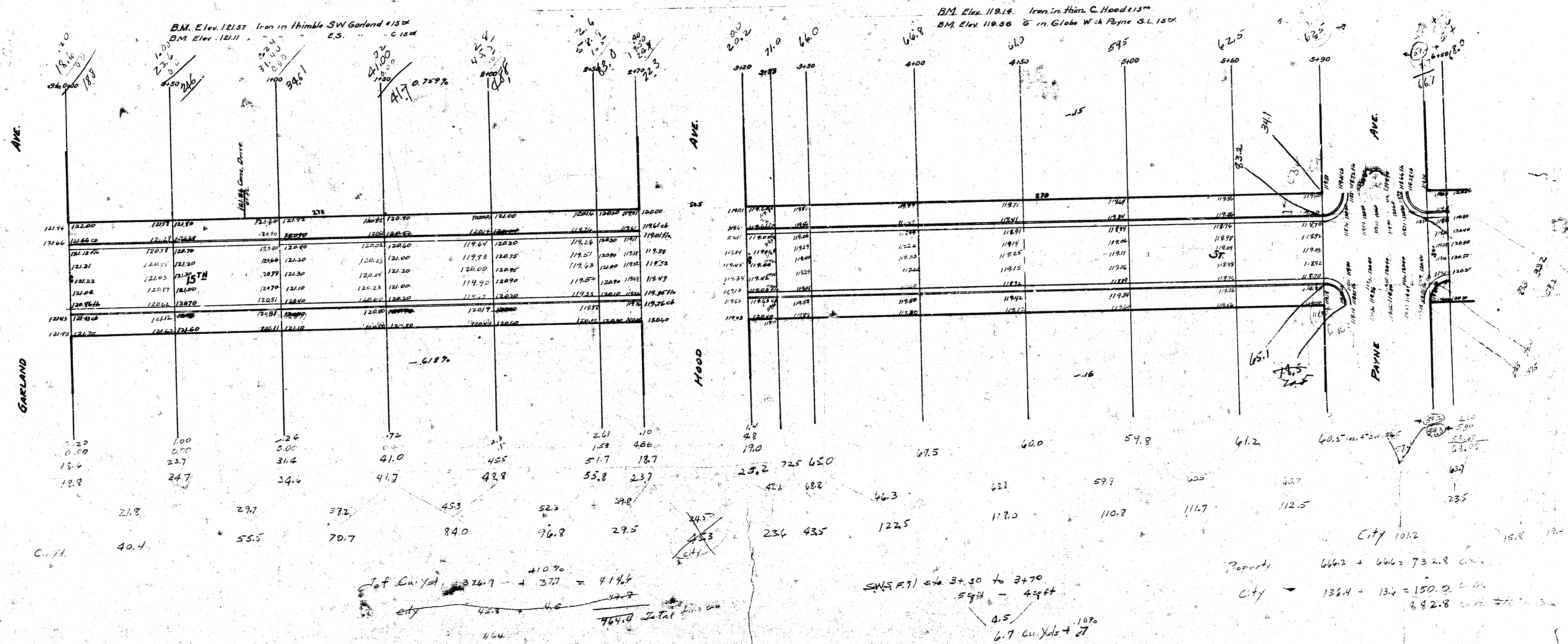


13th St E.L. Garland to W.L. Woodland

21-2-30  
Asph. Crp.



B.M. Elev. 119.14 Iron in thimble C. Hood #15  
B.M. Elev. 118.56 6" in. Globe W & Payne S.L. 15th

GARLAND AVE.

WOOD AVE.

PAYNE AVE.

$$\text{City } 1012$$

$$\text{Property } 666.2 + 666 = 732.8$$

$$\text{City } 131.4 - 13.4 = 150.0$$

$$764.0 \text{ Total}$$



