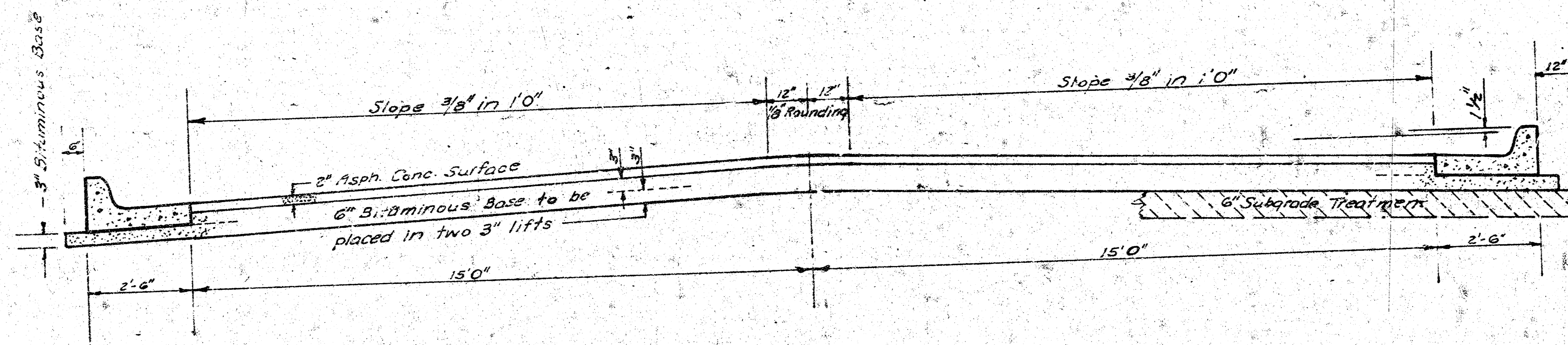


15<sup>TH</sup> ST. NORTH

W.L. LOT 5, BLK. 1, WESTLINK VILLAGE 12<sup>TH</sup> ADDITION TO  
W.L. WESTFIELD

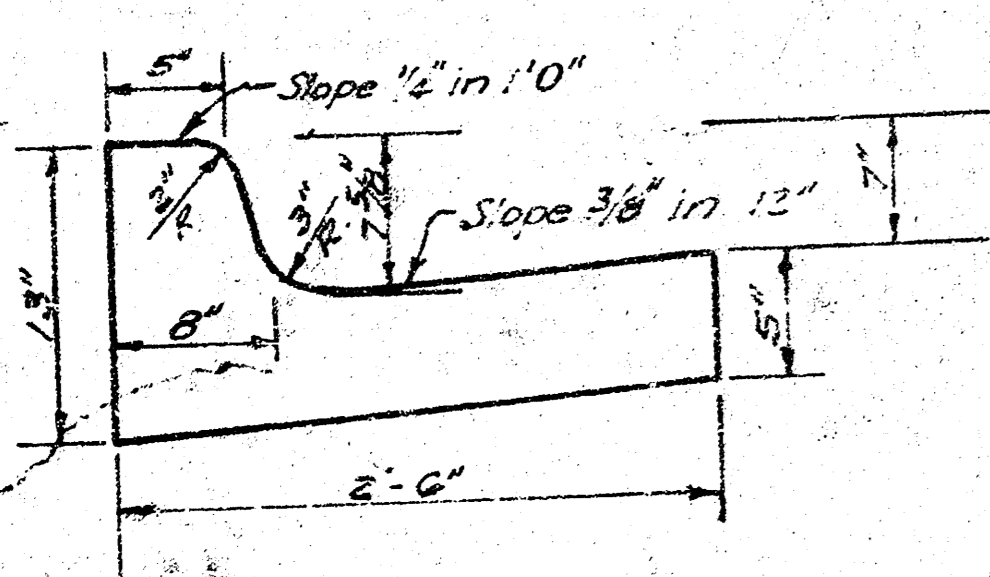


TYPICAL SECTION

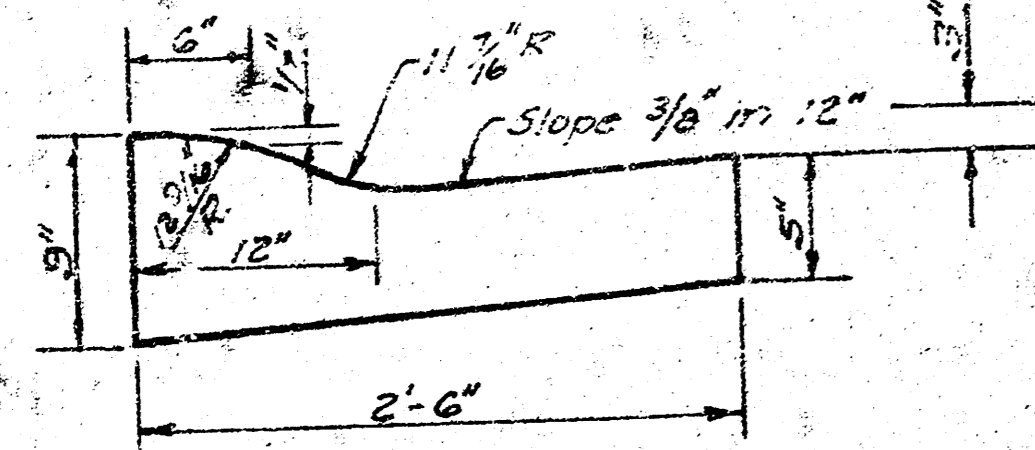
35' ASPHALTIC CONCRETE PAVEMENT WITH BITUMINOUS BASE

The A.C. Pavement between the comb. curb & gutter shall be paid as Sq.Yds. 8" A.C. Pavement (6" Bituminous Base).  
The Bituminous Base under the Comb. curb & gutter shall be paid as Sq.Yds. 3" Bituminous Base.

COMBINED CURB & GUTTER

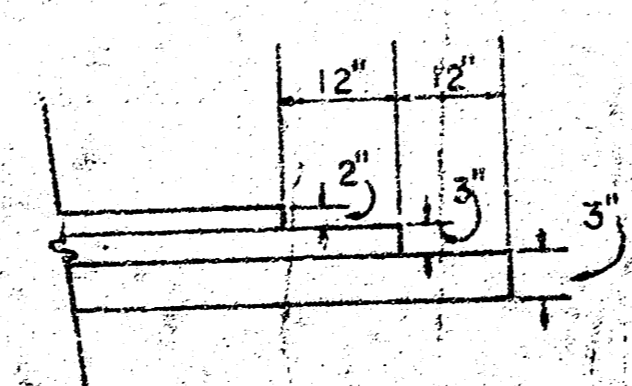


ROLL TYPE CURB & GUTTER



A TACK COAT OF EMULSIFIED ASPHALT (SS-1H) SHALL BE APPLIED AT AN APPROXIMATE RATE 0.05 GALLONS PER SQ YD BETWEEN LIFTS OF ASPHALTIC MATERIALS WHEN ORDERED BY THE ENGINEER. TACK COAT WILL NOT BE PAID FOR DIRECTLY AND SHALL BE CONSIDERED AS SUBSIDIARY TO PRICE BID FOR ASPHALTIC PAVEMENT. BITUMINOUS BASE AND ASPHALTIC CONCRETE WEARING SURFACE SHALL BE PLACED WITH A LAYDOWN MACHINE HAVING AUTOMATIC ELECTRONIC CONTROLS FOR CROWN AND GRADE. CONSTRUCTION JOINTS IN EACH LIFT SHALL BE STAGGERED A MINIMUM DISTANCE OF 1' WITH JOINTS IN PRECEDING LIFTS AND PLACED SUCH THAT A JOINT WILL BE CONSTRUCTED ON THE CENTERLINE IN THE TOP LIFT.

DETAIL OF TRANSVERSE CONSTRUCTION JOINTS



TRANSVERSE CONSTRUCTION JOINTS SHALL BE CONSTRUCTED IN FLEXIBLE BASE PAVEMENTS AT LOCATIONS WHERE PAVEMENT TEMPORARILY ENDS TO FACILITATE FUTURE PAVEMENT CONSTRUCTION AS SHOWN BY DETAIL. THE COST OF CONSTRUCTING THE TRANSVERSE CONSTRUCTION JOINTS SHALL NOT BE MEASURED OR PAID FOR DIRECTLY BUT SHALL BE INCLUDED IN THE BID PRICE FOR SQUARE YARDS OF ASPHALTIC CONCRETE PAVEMENT.

CITY OF WICHITA KANSAS

DEPARTMENT of PUBLIC WORKS - Engineering  
Division  
R. W. LINN  
CITY ENGINEER  
DATE \_\_\_\_\_ Proj. No. DAKS 575060 (1/4)

BASELINE IS CTR. OF 16TH ST. NORTH

R.F. 157.10 NE Cor. CONC. PATIO PORCH @ REAR OF HOUSE # 2304 NANTUCKET  
R.F. 158.38 NW Cor. PORCH W/S HOUSE # 1502 MURRAY

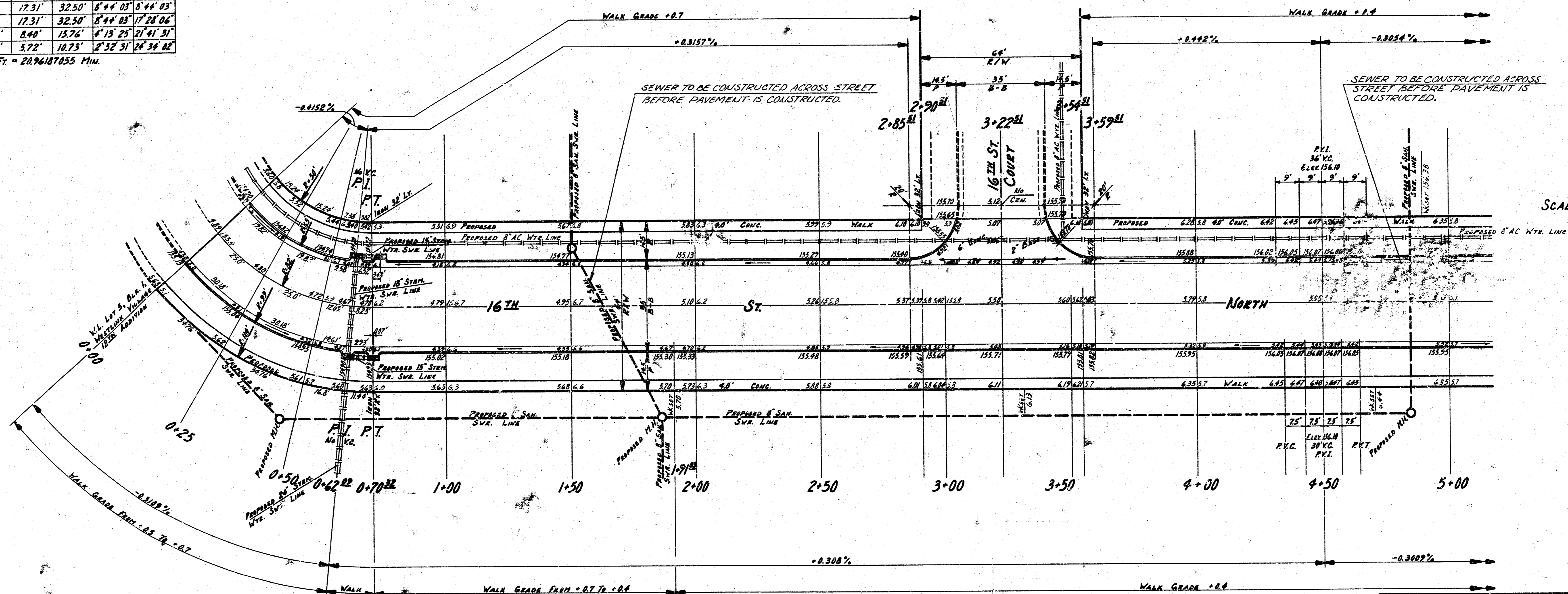
NO MORE THAN 9'-20" DRIVES TO BE CONSTRUCTED ON THIS PROJECT.

$\Delta = 91^\circ 44' 00''$  T. = 37.49' L. = 74.32' LC. = 68.18'

CURVE DATA BASED ON  $\Delta$  RAD.  $\Delta = 1.6034$

STA.	ARC.	CHORD LENGTH	DEFLECTION	TOTAL DEFLECTION
0+00			0° 00' 00"	0° 00' 00"
0+25	25'	17.31'	32.50'	8° 44' 03"
0+50	25'	17.31'	32.50'	17° 28' 06"
0+62.99	12.09'	8.40'	15.76'	21° 41' 31"
0+70.00	8.23'	5.72'	10.73'	28° 34' 02"

Defl./Ft. = 20.96187855 Min.



SCALE 1" = 20'

SURV. BY: [Name]  
 PLAN. BY: [Name]  
 EX. BY: [Name]  
 CHECKED: [Name]

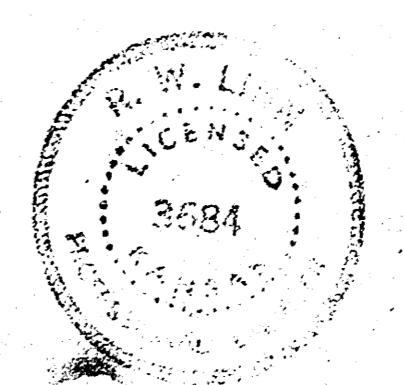
NOTES 2-5 STERN WTR. SVR. INLET

**SUB-GRADE**  
 TYPE OF SUB-GRADE TREATMENT SHALL BE DETERMINED BY THE FIELD ENGINEER. SUB-GRADE TREATMENT MAY CONSIST OF LIME TREATMENT, CEMENT TREATMENT, SUB-GRADE MODIFICATION, OR ANY COMBINATION OF THESE.

NOTE TO FIELD ENGINEER & CONTRACTOR  
 Grade parking and clear right-of-way for proposed sidewalks. Compact fill in sidewalk area. TO BE CONSTRUCTED BY "OTHERS"

EARTHWORK PROPERTY		EARTHWORK CITY	
EXCAVATION 1582.1 Cu. Yds.	COMPACTED FILL 14.8 Cu. Yds.	EXCAVATION 85.7 Cu. Yds.	
+10% 152.9 Cu. Yds.	+10% 1.3 Cu. Yds.	+10% 8.6 Cu. Yds.	
<b>TOTAL 1682.0 Cu. Yds.</b>	<b>TOTAL 16.3 Cu. Yds.</b>	<b>TOTAL 94.3 Cu. Yds.</b>	
TOTAL 2622.1 Sq. Yds. OF MANIPULATION (6" LIFT)			

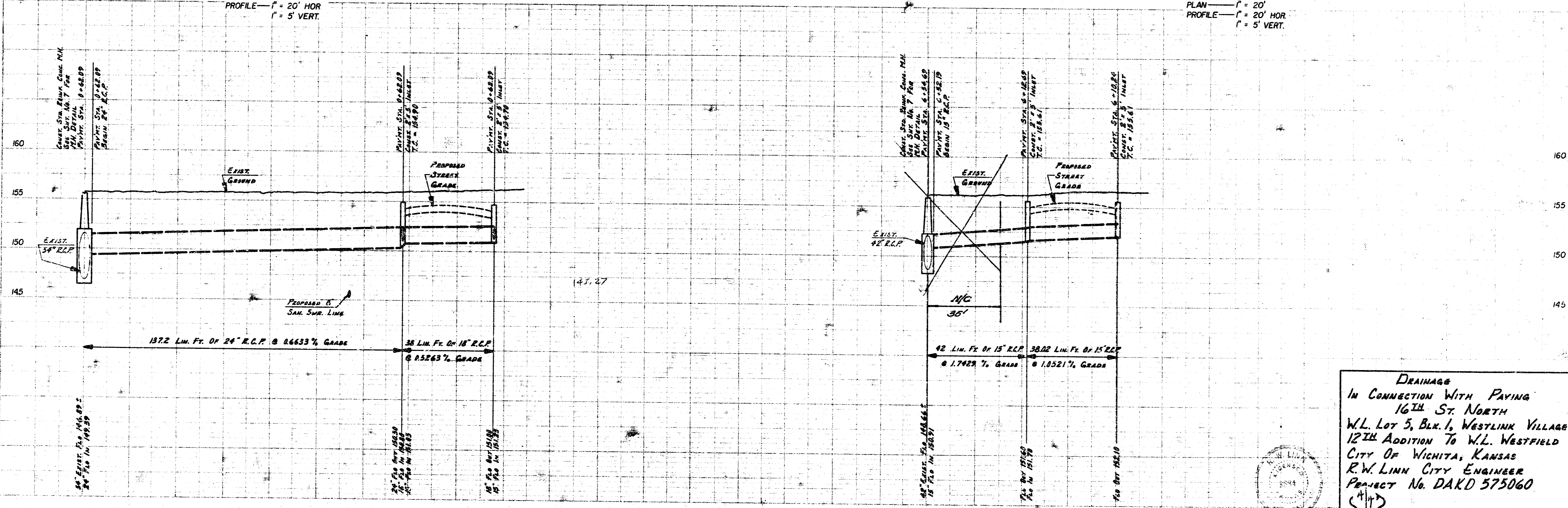
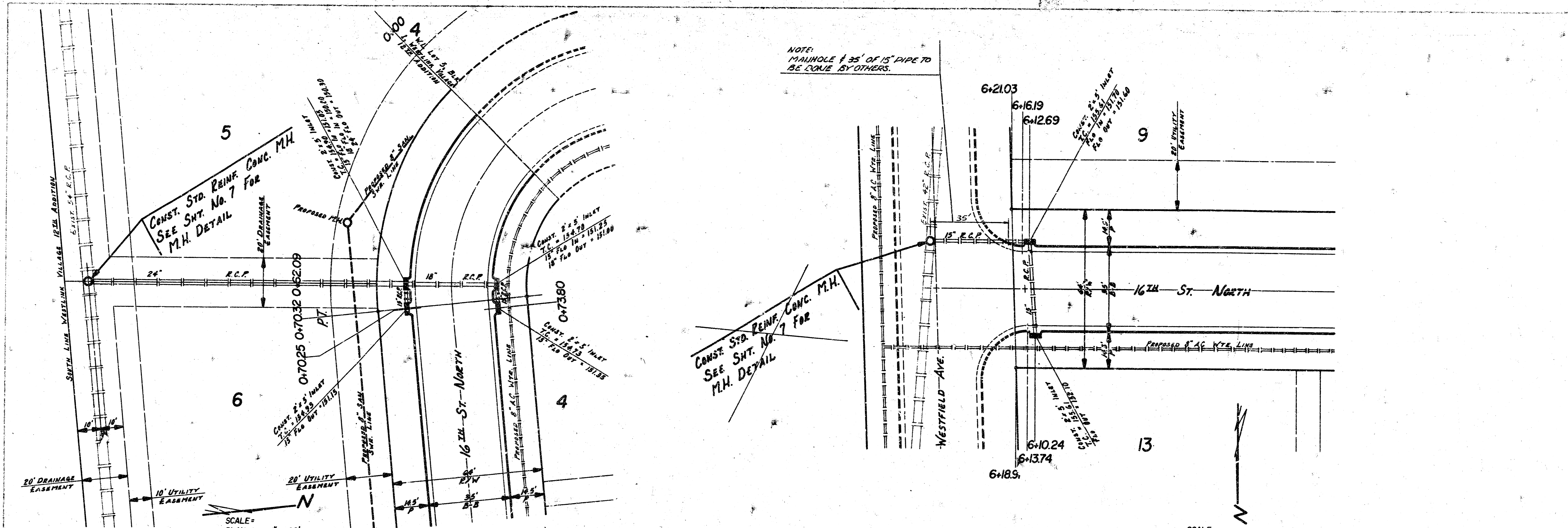
NOTE: ALL USABLE EXCAVATED MATERIAL FROM 16TH ST. NORTH TO BE USED AS FILL ON 16TH ST. CURB.



16TH ST. NORTH  
 W.L. LOT 5, BLK. 1, WESTLINK  
 VILLAGE 12TH ADDITION TO W.L.  
 WESTFIELD  
 30-2-34 ASPHALTIC CONC.  
 CITY OF WICHITA, KANSAS  
 R.W. LINN CITY ENGINEER  
 PROJECT NO. DAKS 575060

FILMED FROM THE BEST AVAILABLE COPY.....





**DRAINAGE**  
 IN CONNECTION WITH PAVING  
 16TH ST. NORTH  
 W.L. LOT 5, BLK. 1, WESTLINK VILLAGE  
 12TH ADDITION TO W.L. WESTFIELD  
 CITY OF WICHITA, KANSAS  
 R.W. LINN CITY ENGINEER  
 PROJECT NO. DAKD 575060  
 (14)