

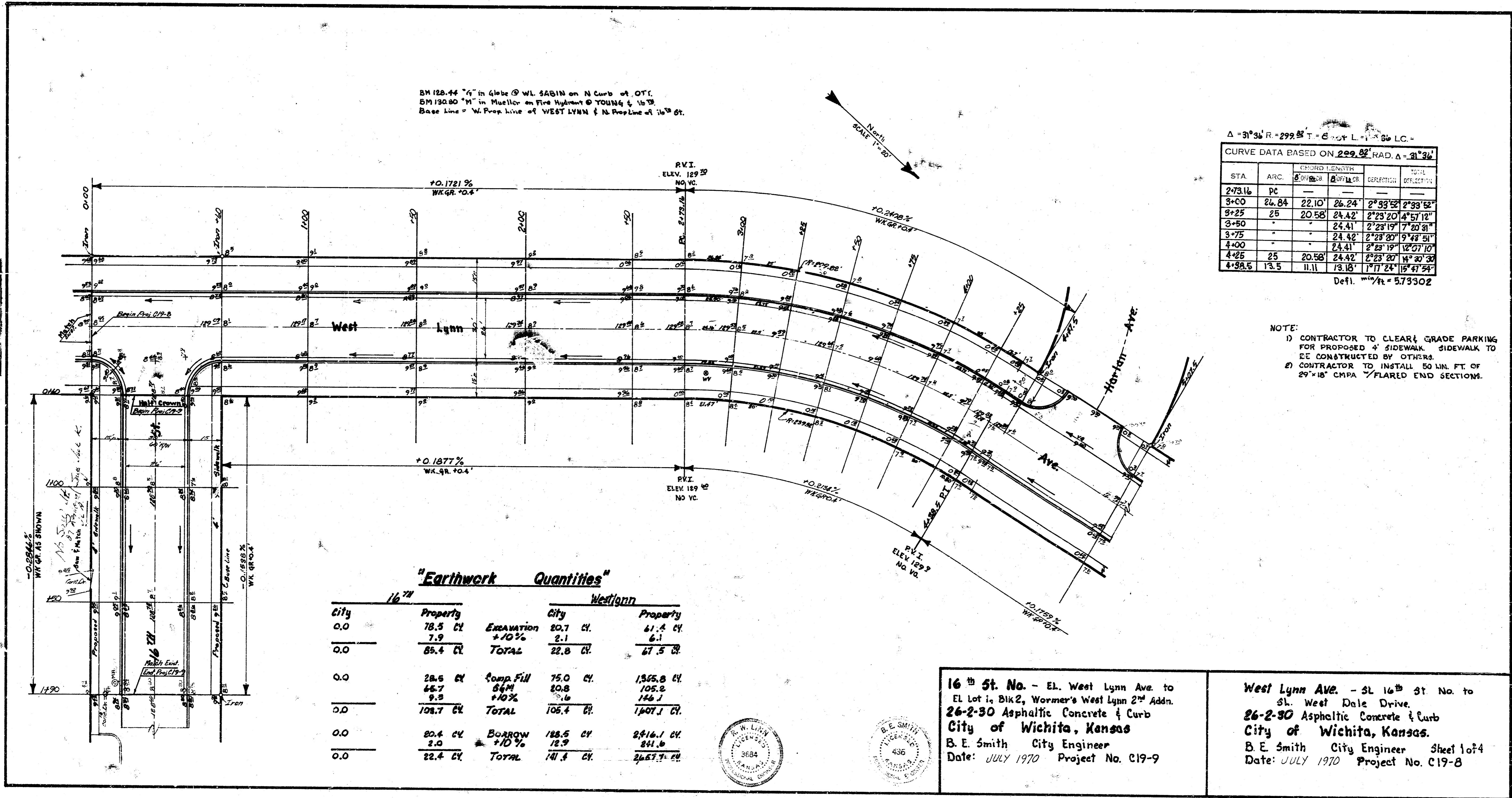
BM 128.44 "4" in Circle @ W.L. SAGIN on N. Curb of OTI.
 BM 130.80 "M" in Muller on Fire Hydrant @ YOUNG & 15th St.
 Base Line = W. Face Line of WEST LYNN & N. Profile of 16th St.

$\Delta = 31^{\circ}34' R = 299.82' T = 6.04' L = 56' LC =$

CURVE DATA BASED ON 200.00' RAD. $\Delta = 31^{\circ}34'$					
STA.	ARC.	CHORD LENGTH		DEFLECTION	
		CHORD	PERCENT	CHORD	PERCENT
2+73.16	PC				
3+00		26.84	22.10%	26.24'	2°33'52"
3+25		25	20.58%	24.42'	2°23'20"
3+50				24.41'	2°23'19"
3+75				24.42'	2°23'20"
4+00				24.41'	2°23'19"
4+25		25	20.58%	24.42'	2°23'20"
4+50.6	PT	13.5	11.11%	13.16'	1°17'24"

Defl. $\frac{1}{400} \text{ in/ft} = 573302$

NOTE:
 1) CONTRACTOR TO CLEAR & GRADE PARKING FOR PROPOSED 4' SIDEWALK. SIDEWALK TO BE CONSTRUCTED BY OTHERS.
 2) CONTRACTOR TO INSTALL 50 LIN. FT. OF 20"x18" CMPA / FLARED END SECTIONS.



SURVEY DRAWING
 PLAN, S.D. 11
 CHECKED BY
 DATE

"Earthwork Quantities"

City	16th St		West Lynn	
	Property	Excavation	Property	Property
0.0	78.5 CY	+10%	20.7 CY	41.4 CY
0.0	7.9		2.1	4.1
0.0	86.4 CY	TOTAL	22.8 CY	45.5 CY
0.0	28.6 CY	Comp. Fill	75.0 CY	1,305.8 CY
0.0	46.7	54%	20.8	105.2
0.0	9.9	+10%	2.0	146.1
0.0	108.7 CY	TOTAL	105.4 CY	1,407.1 CY
0.0	20.4 CY	Borrow	188.5 CY	2,416.1 CY
0.0	2.0	+10%	12.9	261.0
0.0	22.4 CY	TOTAL	171.4 CY	2,677.1 CY

16th St. No. - EL. West Lynn Ave. to EL Lot 1, Blk 2, Wormer's West Lynn 2nd Addn.
 26-2-30 Asphaltic Concrete & Curb
 City of Wichita, Kansas
 B. E. Smith City Engineer
 Date: JULY 1970 Project No. C19-9

West Lynn Ave. - SL 16th St. No. to St. West Dale Drive.
 26-2-30 Asphaltic Concrete & Curb
 City of Wichita, Kansas.
 B. E. Smith City Engineer Sheet 1 of 4
 Date: JULY 1970 Project No. C19-8

