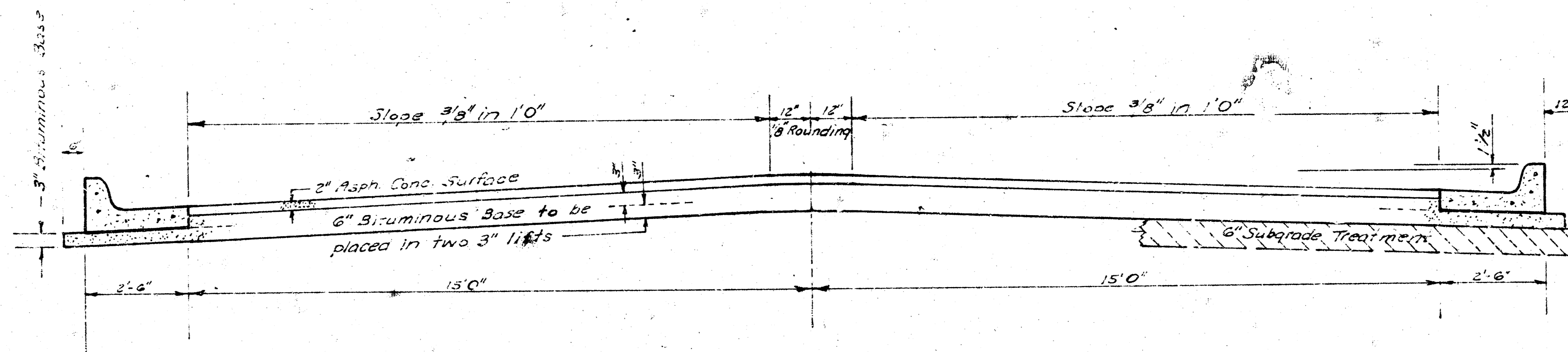


16<sup>th</sup> ST. CT.

N.L. 16<sup>th</sup> St. No. to & incl. Cul-de-sac

Proj. No. DAKS575054



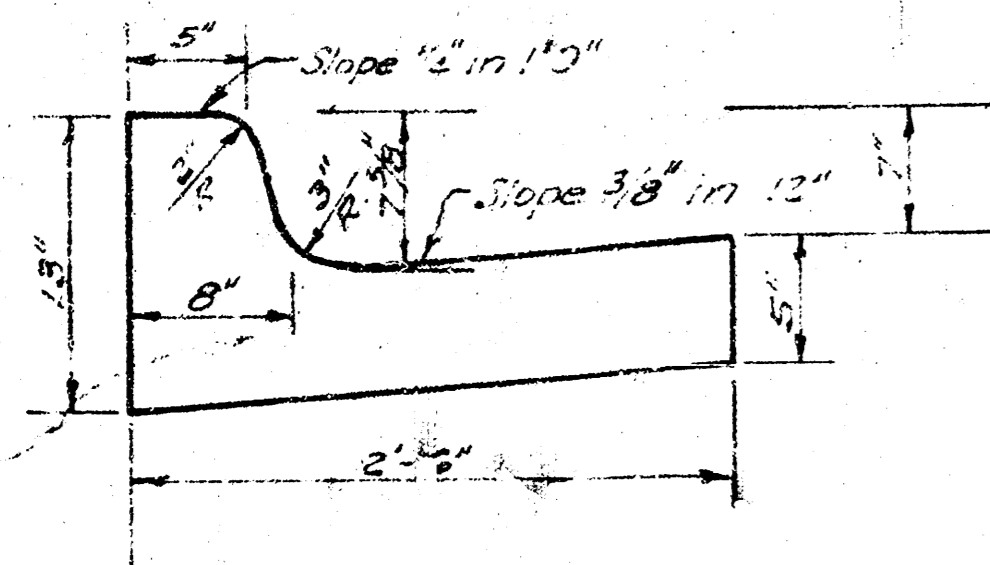
TYPICAL SECTION

35' ASPHALTIC CONCRETE PAVEMENT WITH BITUMINOUS BASE

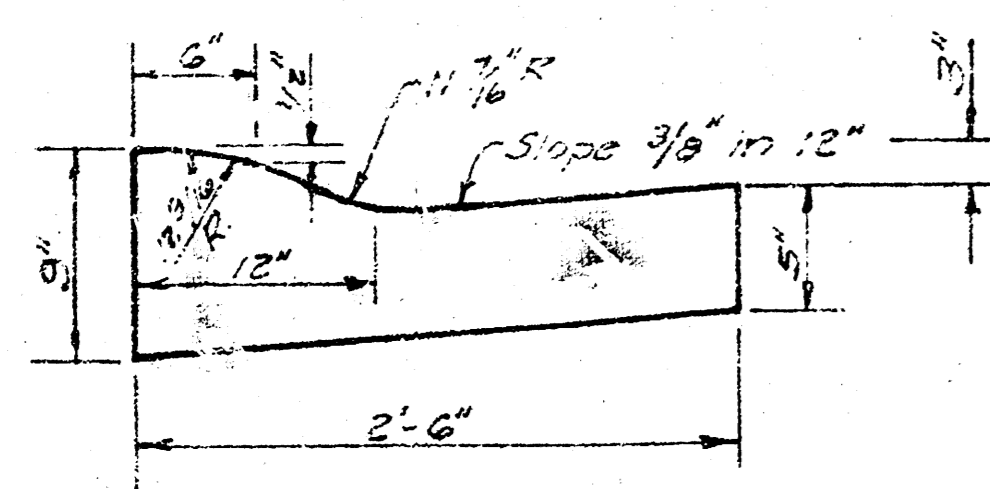
A TACK COAT OF EMULSIFIED ASPHALT (SS-1H) SHALL BE APPLIED AT AN APPROXIMATE RATE 0.05 GALLONS PER SQ YD BETWEEN LIFTS OF ASPHALTIC MATERIALS WHEN ORDERED BY THE ENGINEER. TACK COAT WILL NOT BE PAID FOR DIRECTLY AND SHALL BE CONSIDERED AS SUBSIDIARY TO PRICE BID FOR ASPHALTIC PAVEMENT. BITUMINOUS BASE AND ASPHALTIC CONCRETE WEARING SURFACE SHALL BE PLACED WITH A LAYDOWN MACHINE HAVING AUTOMATIC ELECTRONIC CONTROLS FOR CROWN AND GRADE. CONSTRUCTION JOINTS IN EACH LIFT SHALL BE STAGGERED A MINIMUM DISTANCE OF 1' WITH JOINTS IN PRECEDING LIFTS AND PLACED SUCH THAT A JOINT WILL BE CONSTRUCTED ON THE CENTERLINE IN THE TOP LIFT.

The A.C. Pavement between the curb curb & gutter shall be paid as Sq.Yds. 8" A.C. Pavement (6" Bituminous Base).  
The Bituminous Base under the curb curb & gutter shall be paid as Sq.Yds. 3" Bituminous Base.

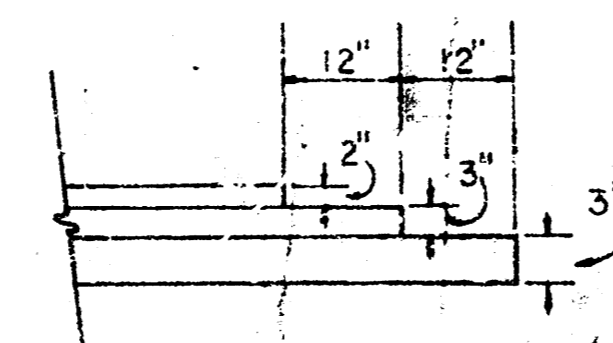
COMBINED CURB & GUTTER



RO<sup>4</sup> TYPE CURB & GUTTER



DETAIL OF TRANSVERSE CONSTRUCTION JOINTS



TRANSVERSE CONSTRUCTION JOINTS SHALL BE CONSTRUCTED IN FLEXIBLE BASE PAVEMENTS AT LOCATIONS WHERE PAVEMENT TEMPORARILY ENDS TO FACILITATE FUTURE PAVEMENT CONSTRUCTION AS SHOWN BY DETAIL. THE COST OF CONSTRUCTING THE TRANSVERSE CONSTRUCTION JOINTS SHALL NOT BE MEASURED OR PAID FOR DIRECTLY BUT SHALL BE INCLUDED IN THE BID PRICE FOR SQUARE YARDS OF ASPHALTIC CONCRETE PAVEMENT.

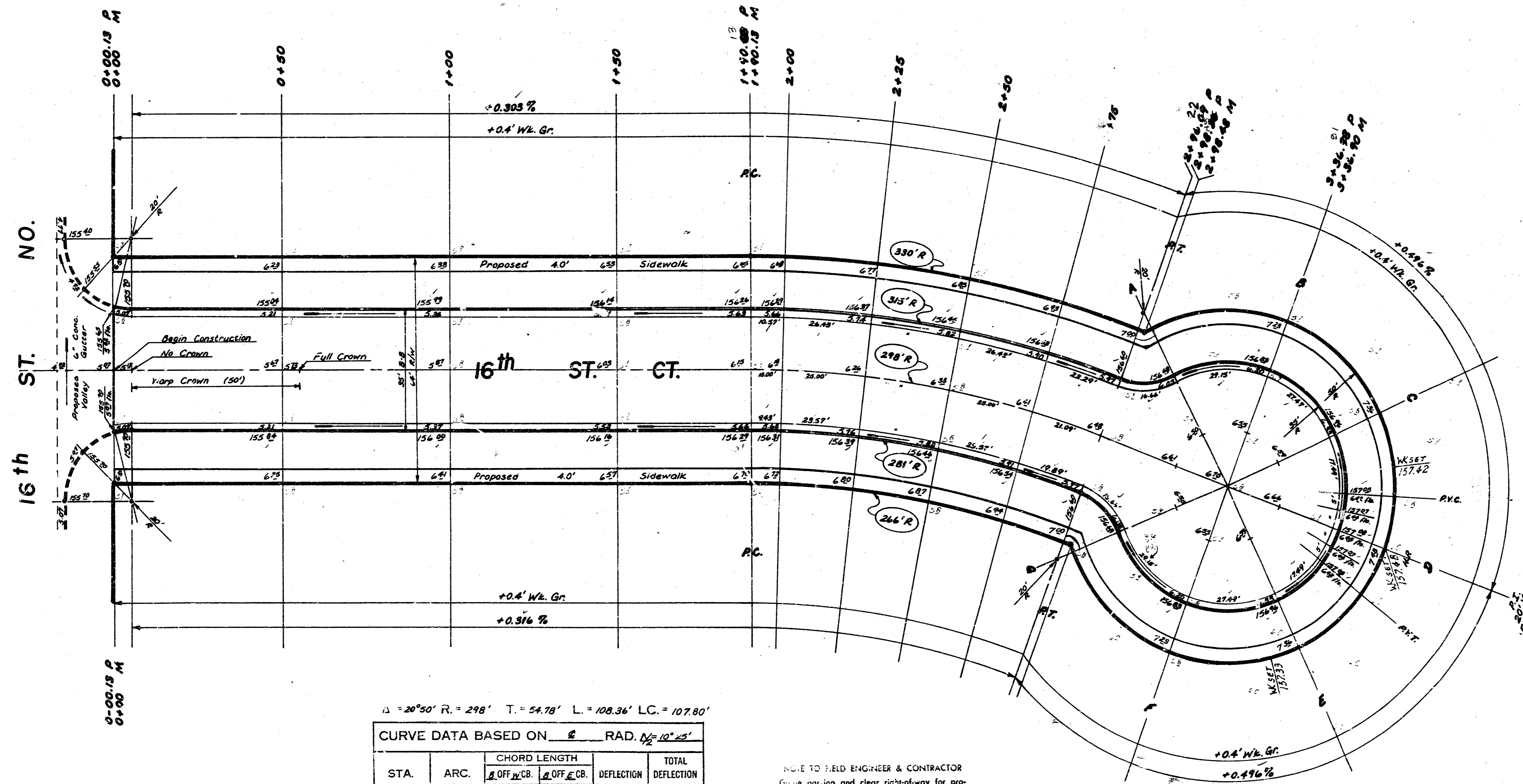
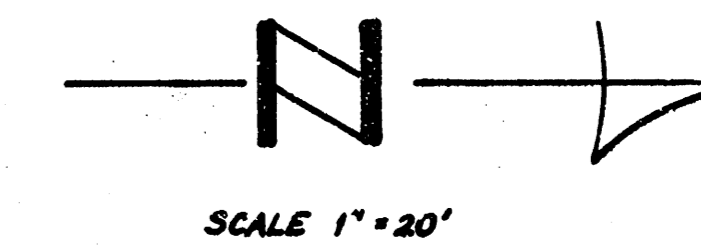
CITY OF WICHITA KANSAS

DEPARTMENT of PUBLIC WORKS - Engineering Division

R. W. LINN CITY ENGINEER  
DATE \_\_\_\_\_ Proj. No. DAKS575054

1/2

B.M. = 158.58 N.W. Corner Conc. Porch, House @ 1502 Murray



$\Delta = 20^{\circ}50'$  R. = 298' T. = 54.78' L. = 108.36' LC. = 107.80'

CURVE DATA BASED ON $\frac{1}{2}$ RAD. $\frac{1}{2} = 10^{\circ}25'$					
STA.	ARC.	CHORD LENGTH		DEFLECTION	
		$\Delta$ OFF. $\frac{1}{2}$ CB.	$\Delta$ OFF. $\frac{1}{2}$ CB.	DEFLECTION	DEFLECTION
1+90.00				0° 00' 00"	0° 00' 00"
2+00	10.00'	10.84'	9.16'	0° 57' 41"	0° 57' 41"
2+25	25.00'	27.09'	22.90'	2° 24' 12"	5° 21' 51"
2+50	25.00'	27.09'	22.90'	2° 24' 12"	5° 46' 03"
2+75	25.00'	27.09'	22.90'	2° 24' 12"	8° 10' 17"
2+98.36	28.36'	25.31'	21.59'	2° 14' 49"	10° 25' 00"

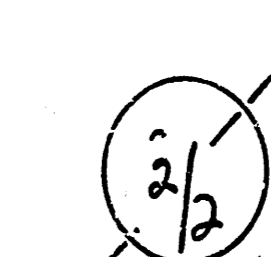
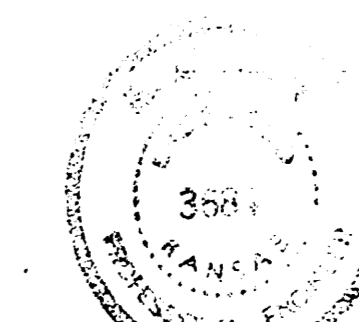
Defl./ft. = 5.768031544 Min.

NOTE TO FIELD ENGINEER & CONTRACTOR  
Grade parking and clear right-of-way for proposed sidewalk. Compact fill in sidewalk area to be constructed by "OTHERS".

**SUB-GRADE**  
TYPE OF SUB-GRADE TREATMENT SHALL BE DETERMINED BY THE FIELD ENGINEER. SUB-GRADE TREATMENT MAY CONSIST OF LIME TREATMENT, CEMENT TREATMENT, SUB-GRADE MODIFICATION, OR ANY COMBINATION OF THESE.

Note: All usable excavated material from 16th St. No. to be used as fill on 16th St. Ct.

Earthwork:			
Excavation	216.1	Comp. Fill	137.7
+10%	21.6	+10%	13.8
	237.7 C.Y.		151.5 C.Y.
		Borrow	103.9
		+20%	20.8
			124.7 C.Y.



16th ST. CT.  
N.L. 16th St. No. to & incl. Cul-de-sac  
35' Asph. Conc. Pavt.  
CITY of WICHITA, KANSAS  
R. W. Linn — City Engineer  
Proj. No. DAKS575054 Date \_\_\_\_\_

Survey Dulice  
Plat. Henry  
Exc. Henry  
Checked