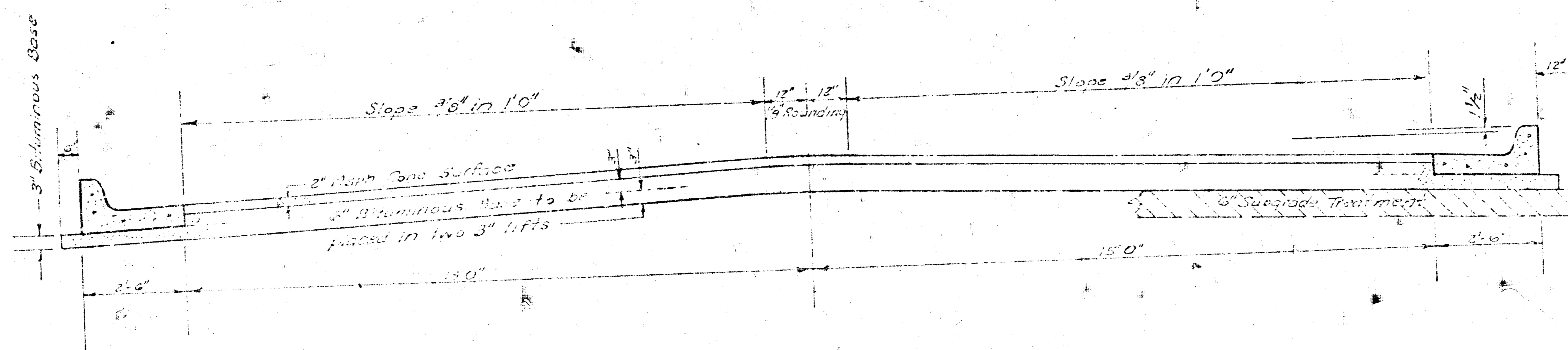


17TH STREET
E.L. PARKDALE TO W.L. SKYVIEW STR.
 Proj No. 472-76-245-80516000-000-001



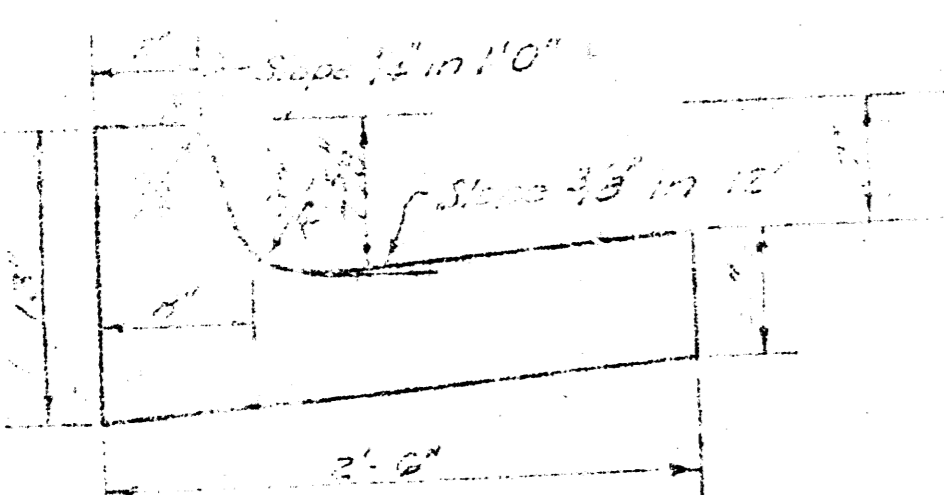
TYPICAL SECTION

55' ASPHALTIC CONCRETE PAVEMENT WITH BITUMINOUS BASE

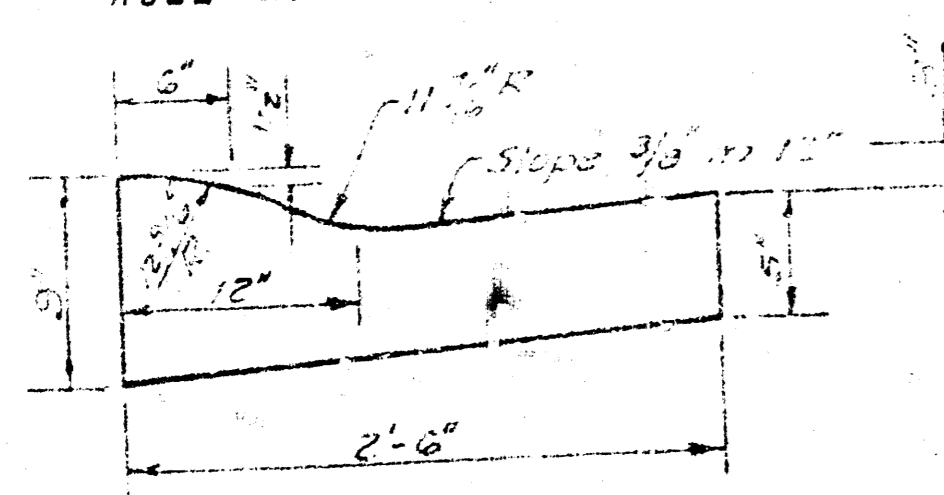
A TACK COAT OF EMULSIFIED ASPHALT (SS-1H) SHALL BE APPLIED AT AN APPROXIMATE RATE 0.05 GALLONS PER SQ YD BETWEEN LIFTS OF ASPHALTIC MATERIALS WHEN ORDERED BY THE ENGINEER. TACK COAT WILL NOT BE PAID FOR DIRECTLY AND SHALL BE CONSIDERED AS SUBSIDIARY TO PRICE BID FOR ASPHALTIC PAVEMENT. BITUMINOUS BASE AND ASPHALTIC CONCRETE WEARING SURFACE SHALL BE PLACED WITH A LAYDOWN MACHINE HAVING AUTOMATIC ELECTRONIC CONTROLS FOR CROWN AND GRADE. CONSTRUCTION JOINTS IN EACH LIFT SHALL BE STAGGERED A MINIMUM DISTANCE OF 1' WITH JOINTS IN PRECEDING LIFTS AND PLACED SUCH THAT A JOINT WILL BE CONSTRUCTED ON THE CENTERLINE IN THE TOP LIFT.

The A.C. Pavement between the curb & gutter shall be paid as Sq Yds. 6" A.C. Pavement (for Bituminous Base). The Bituminous Base under the curb & gutter shall be paid as Sq Yds. 3" Bituminous Base.

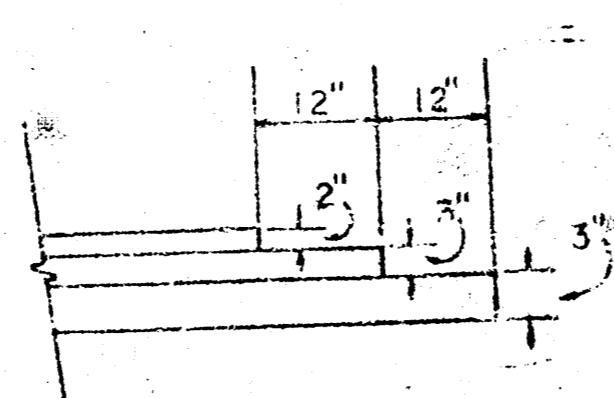
CONTINUED CURB & GUTTER



ROLL TYPE CURB & GUTTER



DETAIL OF TRANSVERSE CONSTRUCTION JOINTS

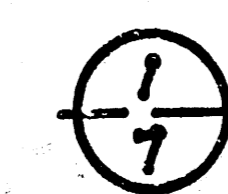


TRANSVERSE CONSTRUCTION JOINTS SHALL BE CONSTRUCTED IN FLEXIBLE BASE PAVEMENTS AT LOCATIONS WHERE PAVEMENT TEMPORARILY ENDS TO FACILITATE FUTURE PAVEMENT CONSTRUCTION AS SHOWN BY DETAIL. THE COST OF CONSTRUCTING THE TRANSVERSE CONSTRUCTION JOINTS SHALL NOT BE MEASURED OR PAID FOR DIRECTLY BUT SHALL BE INCLUDED IN THE BID PRICE FOR SQUARE YARDS OF ASPHALTIC CONCRETE PAVEMENT.

CITY OF WICHITA KANSAS

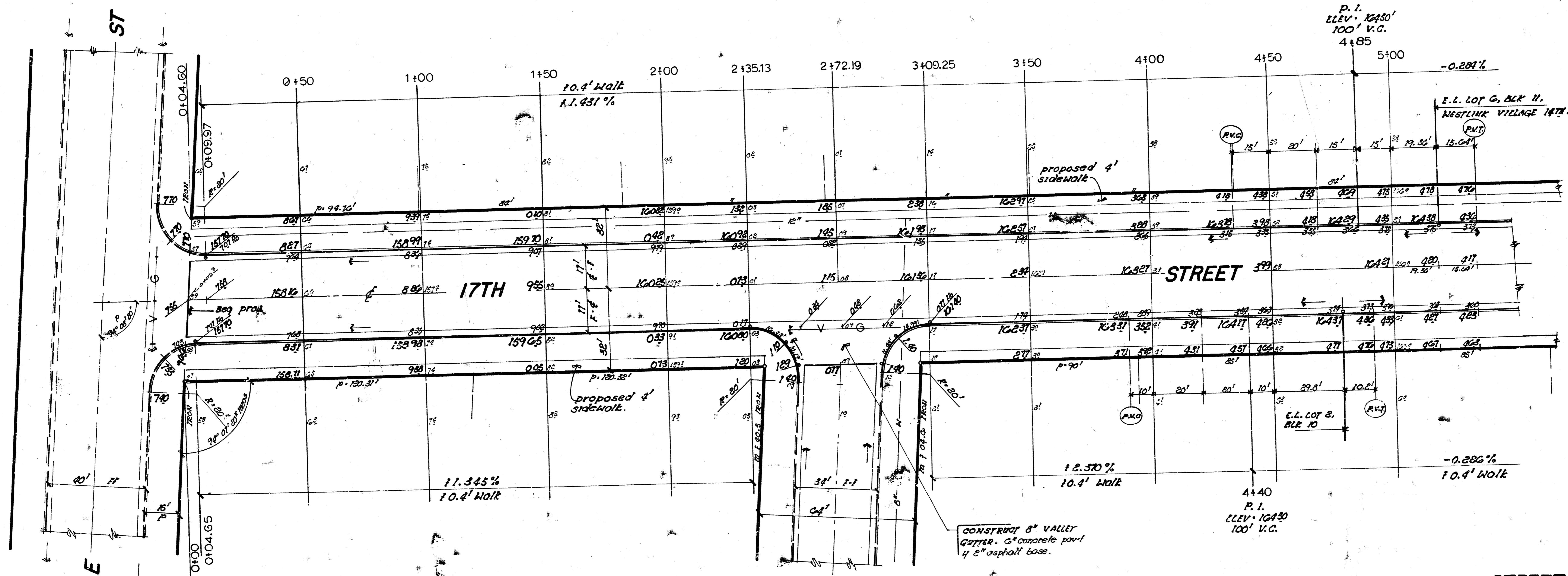
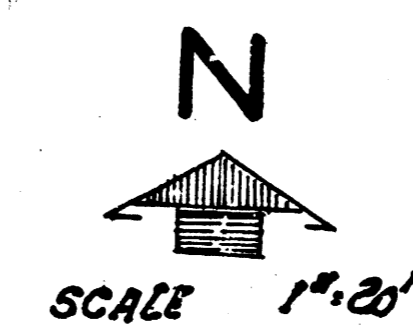
DEPARTMENT of PUBLIC WORKS - Engineering
 Division

R.W. LINN CITY ENGINEER
 DATE _____ Proj. No. _____



TAKEN FROM THE BEST

B.M. 163 2/2 Top Metal post approx 100' W. & 120' N. of N.W. corner 17TH and SKYVIEW.
 Base Line = So line 17TH STREET.



Surveyed by: M. J. J. Jr.
 Checked:

NOTE: ERROR IN ORIG. CROSS SECTIONS

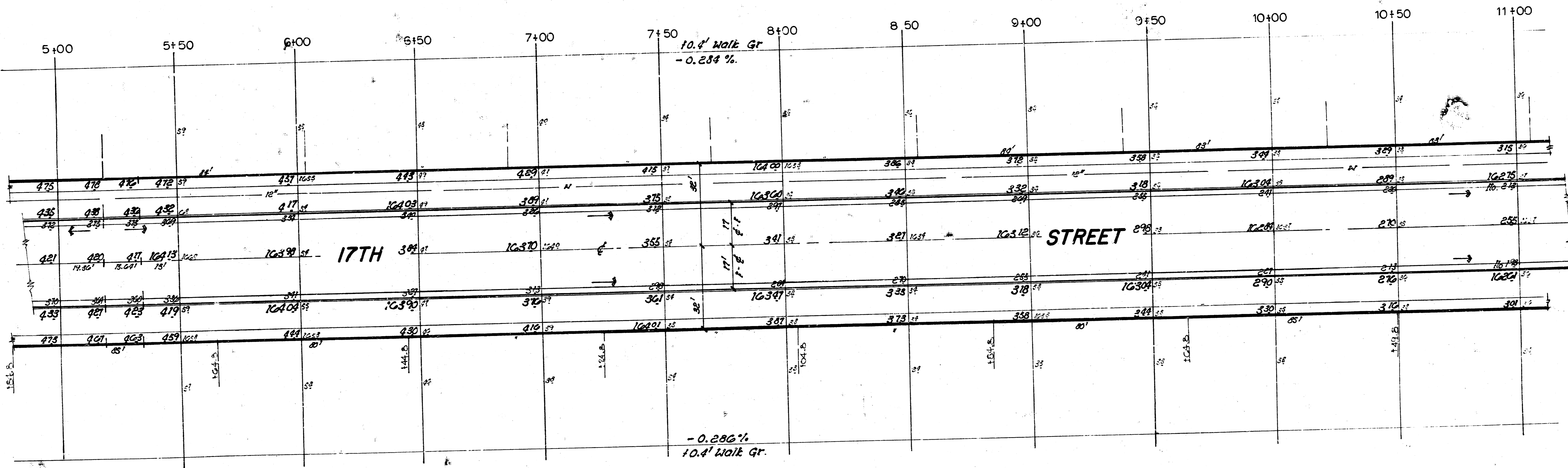
PROPERTY		CITY	
EARTHWORK		EARTHWORK	
EXCAVATION	C. FILL	EXCAVATION	C. FILL
2,612.2 CU YDS	37.2 CU YDS	197.0 CU YDS	37.2 CU YDS
10% 261.2	110% 5.7	10% 19.7	110% 5.7
3094.5 CU YDS	629 CU YDS	216.7 CU YDS	629 CU YDS

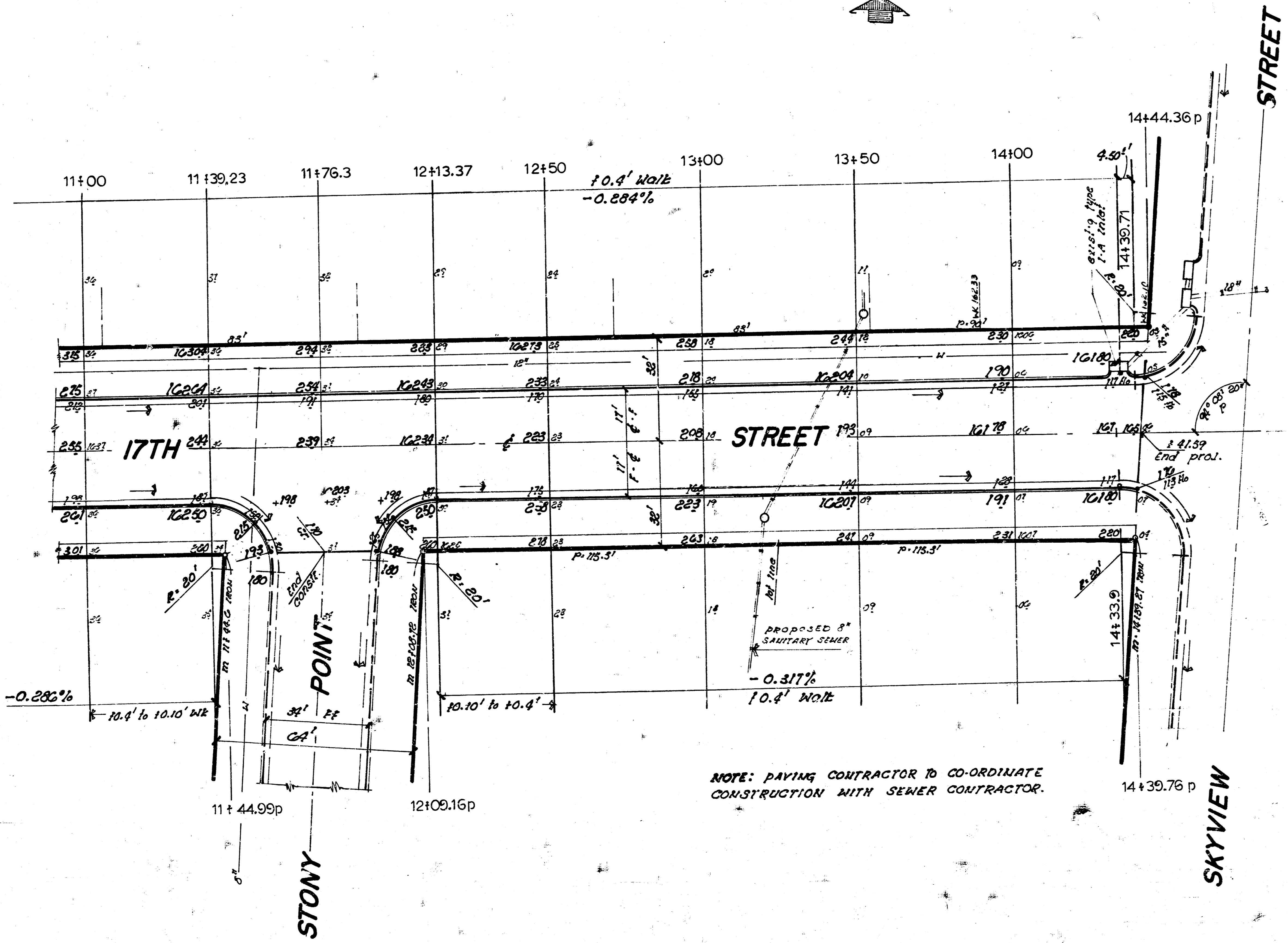
SUB-GRADE
 TYPE OF SUB-GRADE TREATMENT SHALL BE DETERMINED BY THE FIELD ENGINEER. SUB-GRADE TREATMENT MAY CONSIST OF LIME TREATMENT, CEMENT TREATMENT, SUB-GRADE MODIFICATION, OR ANY COMBINATION OF THESE.

10-20' DRIVES

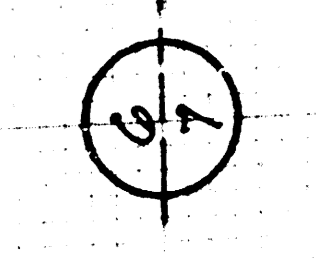
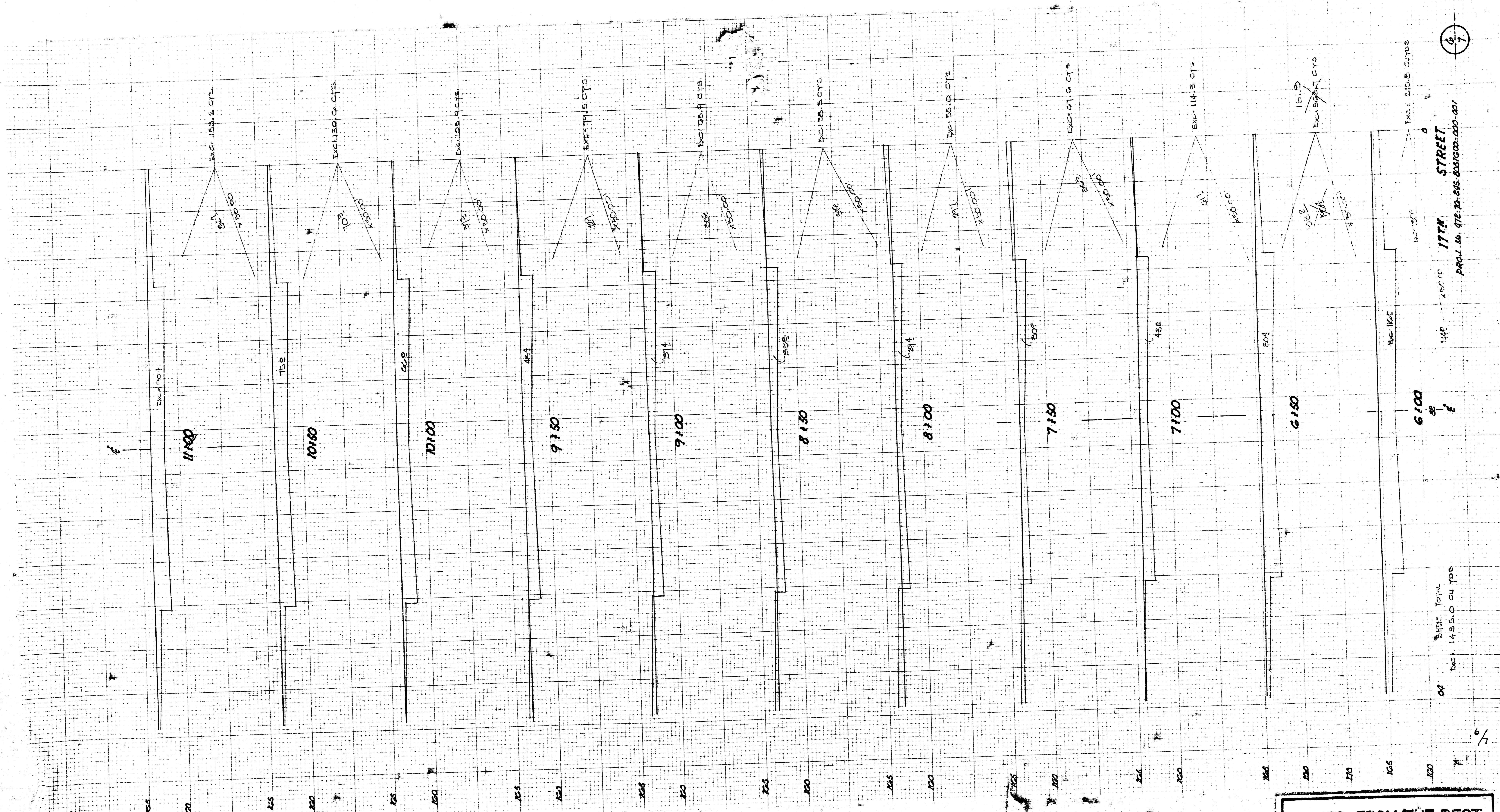
2/7

17TH STREET
 E.L. PARKDALE TO W.L. SKYVIEW
CITY OF WICHITA, KANSAS
 (34' FF) 2" asph conc wearing surface
 6" bituminous base y comb cb f gtr.
 R. W. LINN CITY ENGINEER
 DATE: _____
 PROJ No. 472-76-245-80516000-000-U01



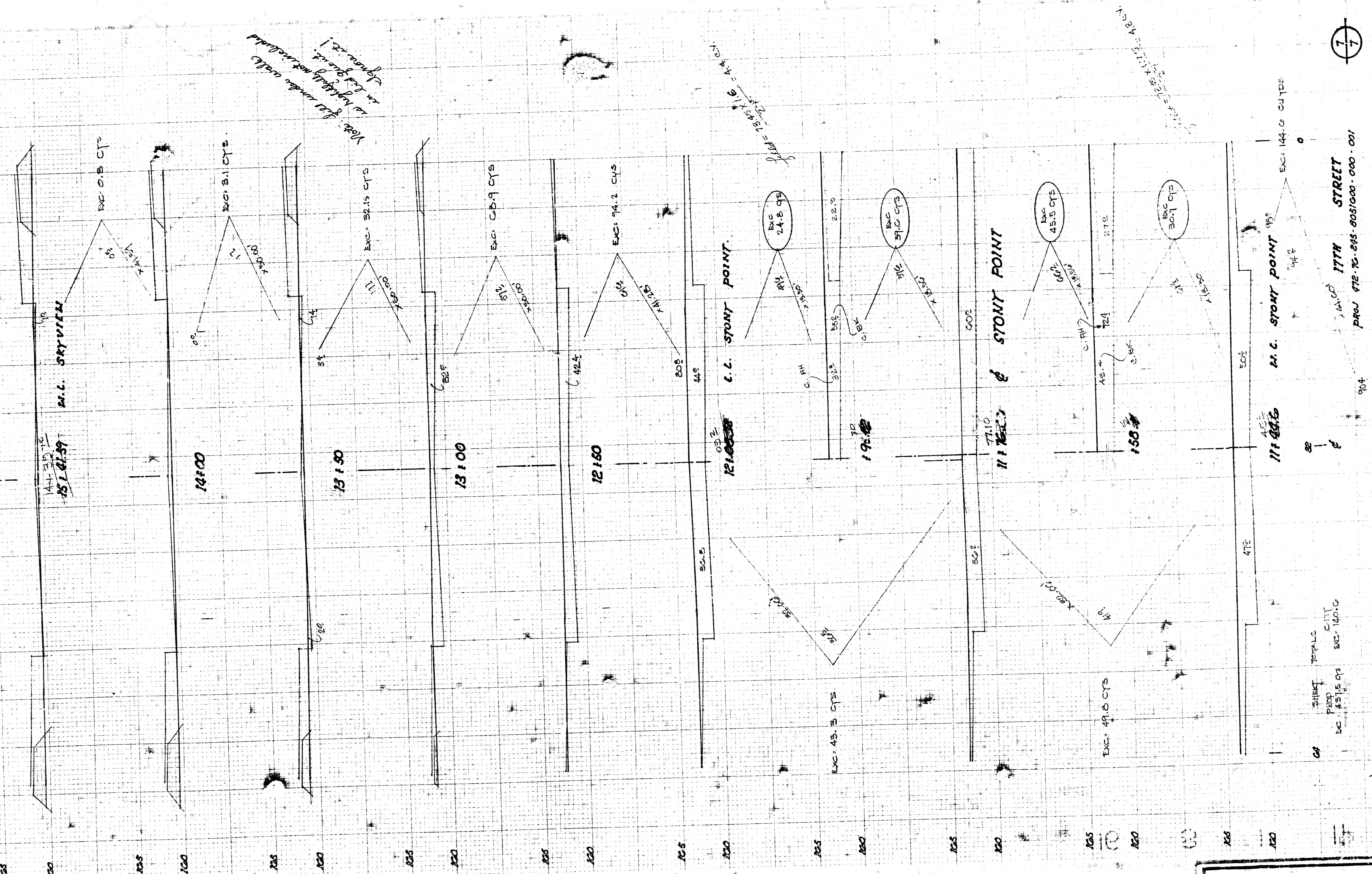


NOTE: PAVING CONTRACTOR TO CO-ORDINATE CONSTRUCTION WITH SEWER CONTRACTOR.



STREET
177M
177M
145
146
147
148
149
150
151
152
153
154
155
156
157
158
159
160
161
162
163
164
165
166
167
168
169
170
171
172
173
174
175
176
177
178
179
180
181
182
183
184
185
186
187
188
189
190
191
192
193
194
195
196
197
198
199
200

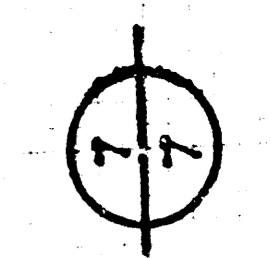
NET TOTAL
Exc. 145.0 cu yds



*Note: All work within
in this plan is to be
done in accordance with
specifications.*

*Exc. 24.8 CYS
Exc. 59.0 CYS*

*Exc. 45.5 CYS
Exc. 30.1 CYS*



117TH STREET
PAR. 712 TO 815-005/000-000-001