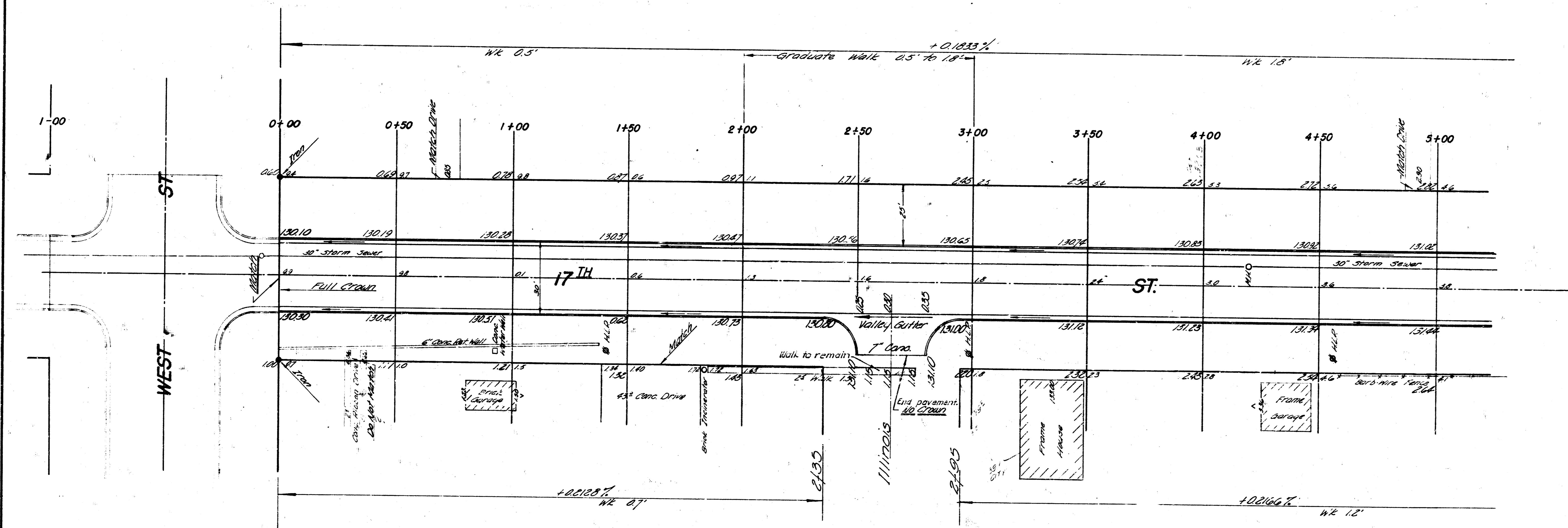
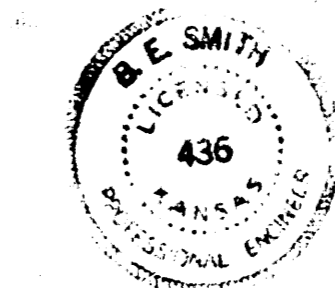


B.M. 130.55 City Std. S.E. Cor. West of 17th
Baseline of Stationing on N. 17.



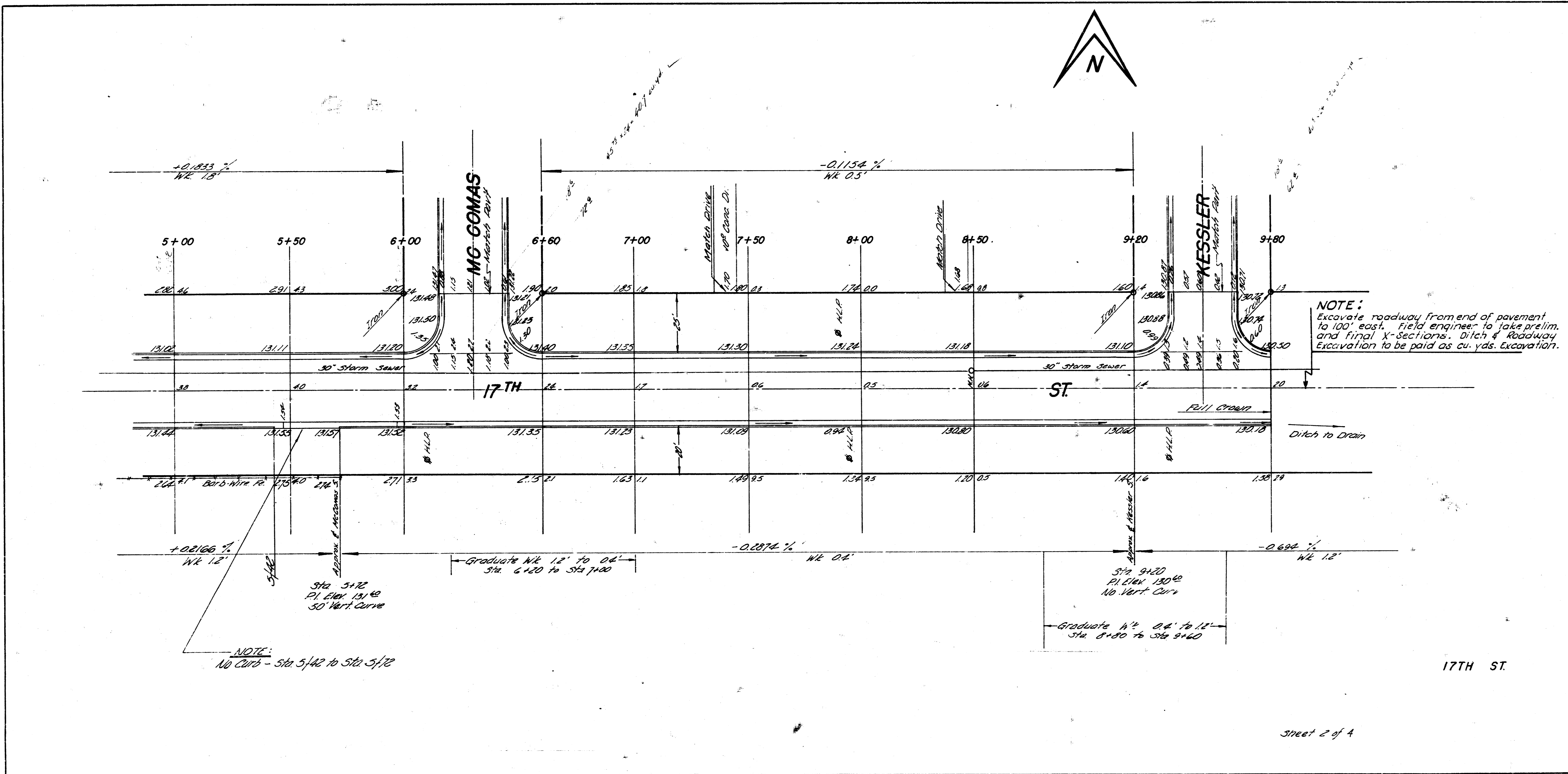
17TH ST
 WEST
 1-00

Excavation	
Prop	City
29572	4070
29571	4071
32529	4477



Street 1 of 4

17TH ST
 E.L. WEST TO E.L. KESSLER
26'-2'-30' A.C.
 CITY OF WICHITA, KANSAS
 B.E. SMITH CITY ENGINEER
 DATE: 1/24/62 PROJ. NO. G18-192



17TH ST

Sheet 2 of 4