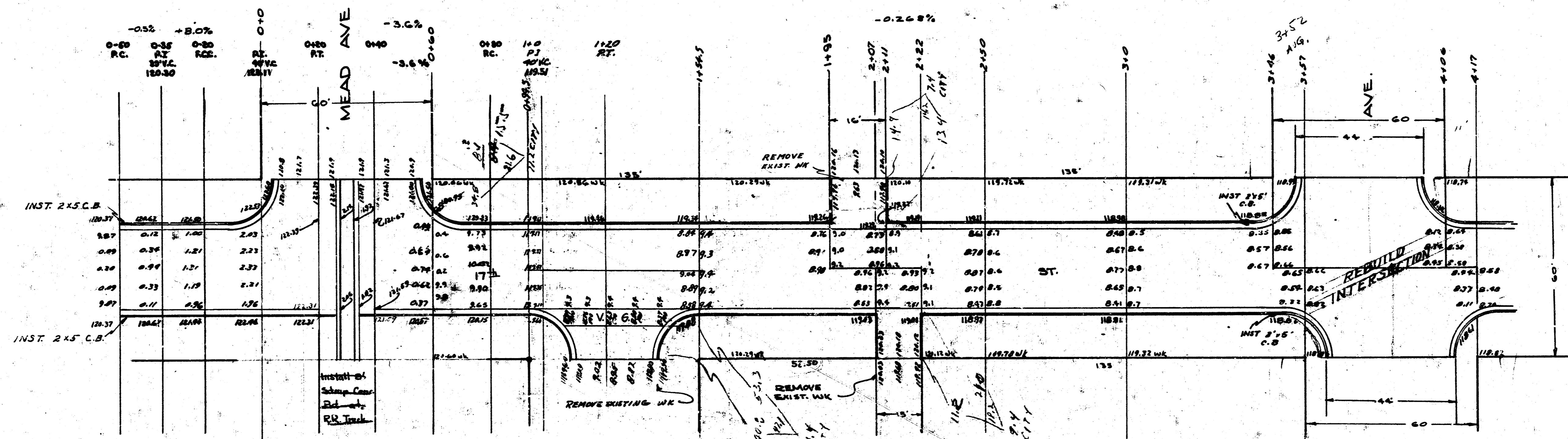


B.M. 118.90 K in Keeler & W.L. S. N.W. Cor 17th & Mosley
 B.M. 119.04 M in Moore & W.L. E. N.E. 17th & Washington
 B.M. 118.19 M in Moore & W.L. E. N.E. 17th & Webster
 B.M. 119.00 S.E. Cor Int D Sidewalk S.E. 17th & Ohio
 B.M. 122.90 N.W. Cor SW Wing W.S. Bridge 17th & Canal D in Corp. W.L.

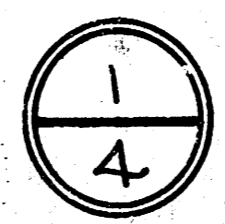


Note: Existing P.V. from RR. to 0+50 to be removed & replaced as shown on plan.

Note: At 0+00 Begin to Raise P.V. Line so that at 0+20 P.L. & Cb. Grade are Same. At 0+40 Begin to Lower P.V. Line so that at 0+60 P.L. is Normal.

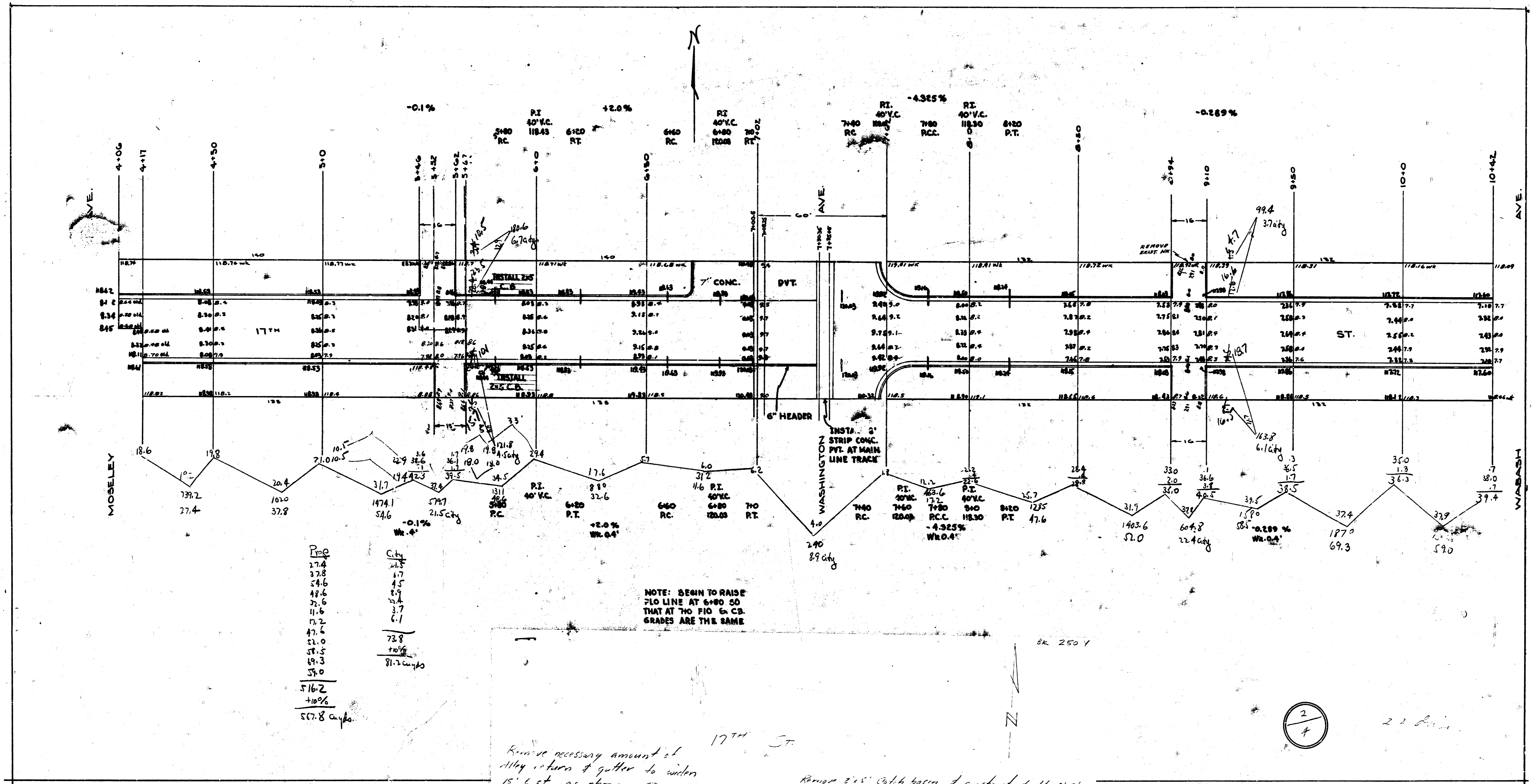
STATION	PROP	CITY
1700	655	
12.6	11.5	191.8
32.3	12.7	254.8
24.5	32.2	272.0
11.6	16.2	272.6
32.0	24.2	1277.2
30.7	9.8	
18.7	7.8	
14.6	3.4	
11.6	142.5	
15.2	154.8	
19.8		

TOTALS

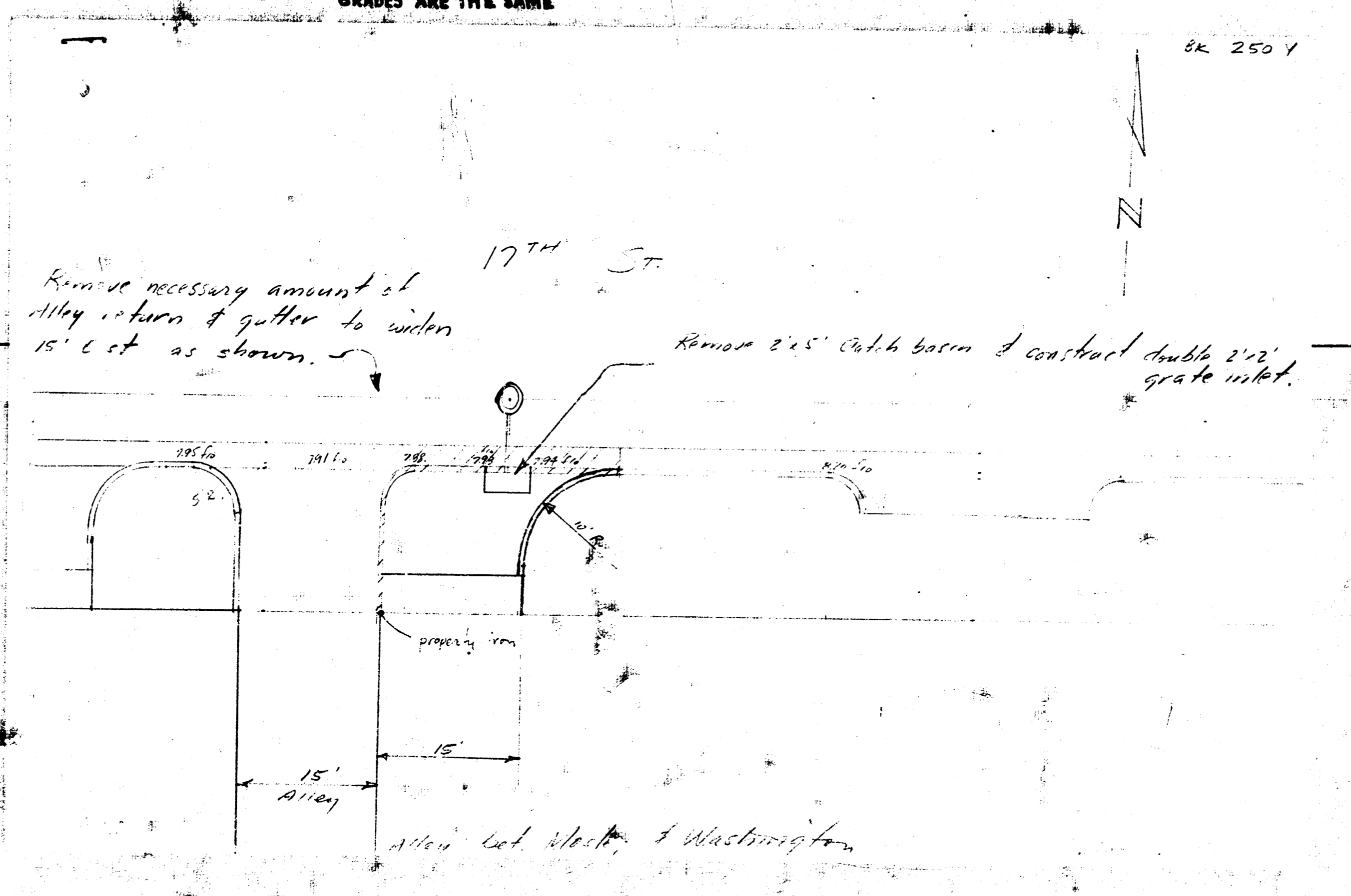


See p. 2 section on Mosley, and 9 on Kansas Avenue.

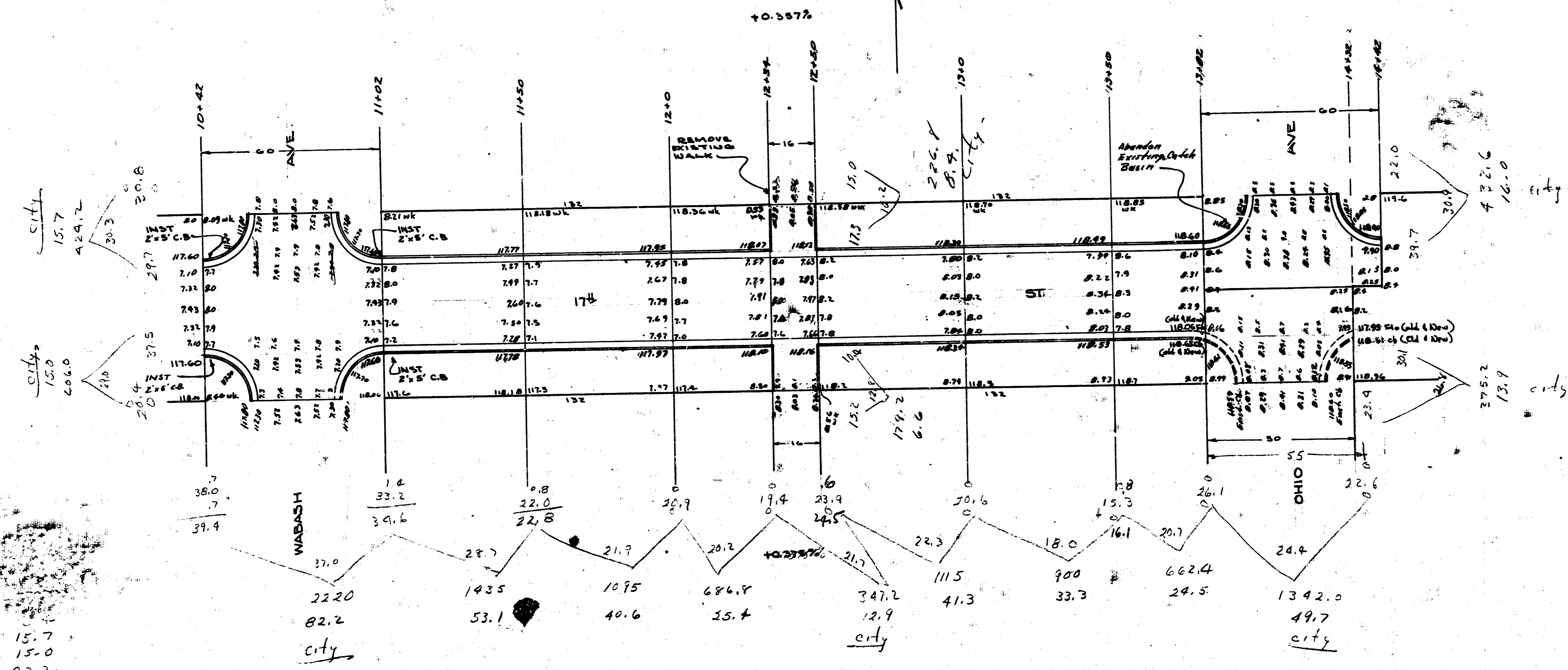
17th ST
 W.L. MEAD + W.L. CANAL
 CITY OF WICHITA, KANS.
 26-2-30 ASPHALTIC CONCRETE
 LK WHITE - CITY ENGINEER
 FEB. 1947



P.P.O.	City
27.4	24.5
32.8	17
34.6	4.5
47.6	1.5
32.6	3.7
11.6	6.1
12.2	
47.4	
51.0	73.8
49.3	+0.4%
55.0	81.2 cfs
516.2	
+0.4%	
507.8 cfs	



2/4



15.7
 15.0
 82.2
 12.9
 41.7
 13.7
 16.0

 220.4
 + 22.0

 242.4

+ Prop.
 53.1
 40.6
 25.9
 41.3
 33.3
 24.5

 218.2 cu yds.
 + 1070
 21.8

 239.0

3
4

