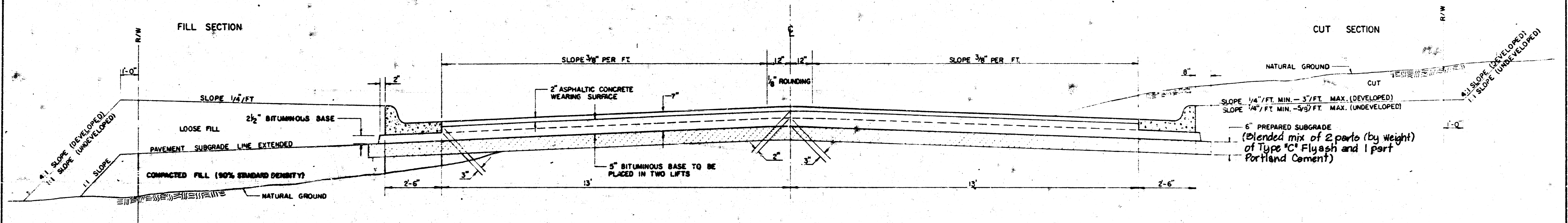
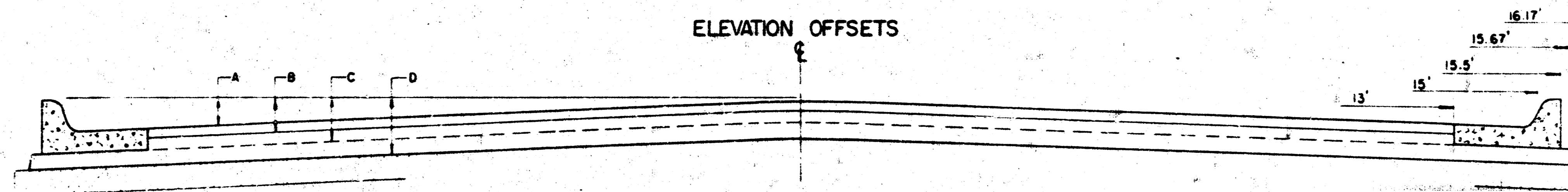


TYPICAL 3' PAVEMENT DETAILS

TRANSVERSE SECTION

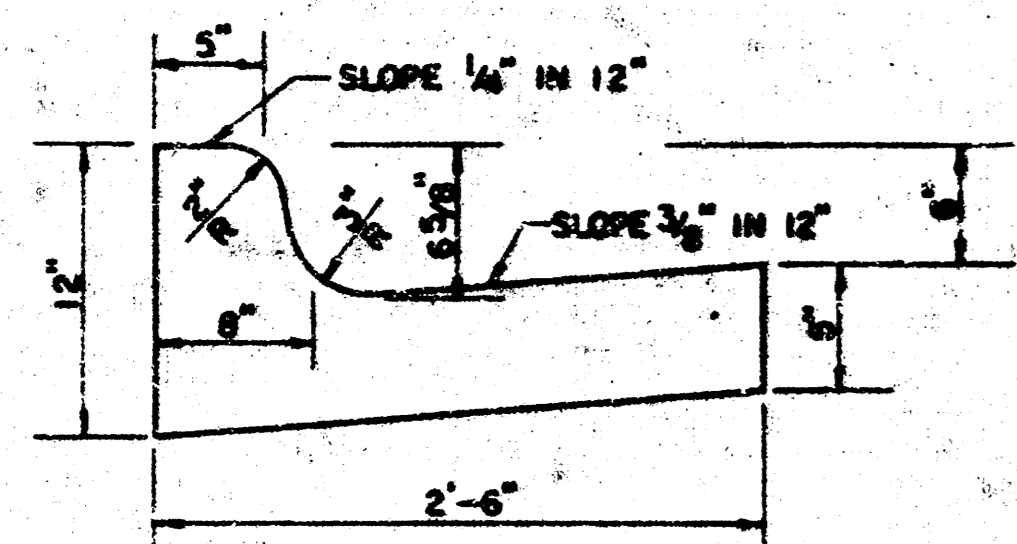


ELEVATION OFFSETS

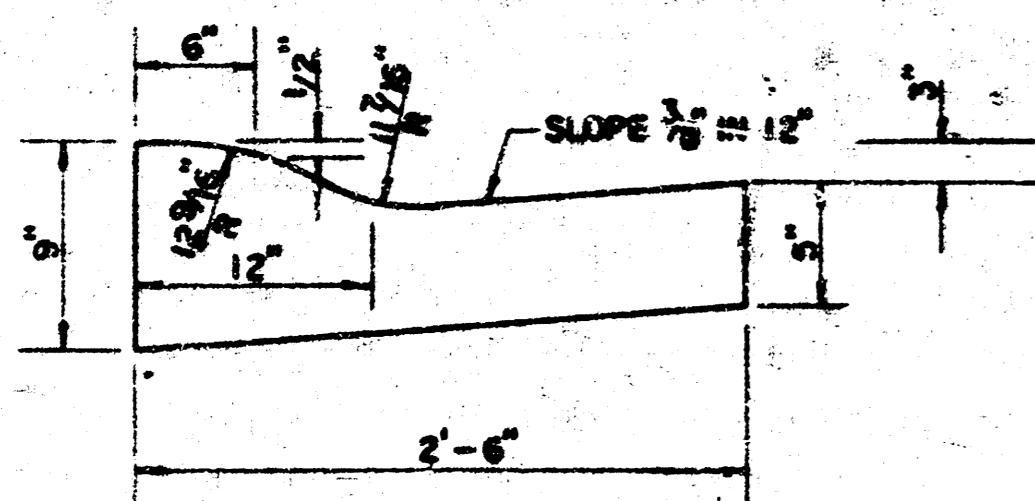


	DISTANCE FROM CENTERLINE (LT. & FT.)												
	0'	2'	4'	6'	7.5'	10'	12'	13'	15'	15.5'	15.67'	16.17'	
A: TOP OF CURBS TO TOP OF SURFACE LIFT	0.10	0.14	0.21	0.27	0.32	0.39	0.46	0.49	—	—	—	—	
B: TOP OF CURBS TO TOP OF UPPER BASE LIFT	0.27	0.31	0.38	0.44	0.49	0.56	0.63	0.66	—	—	—	—	
C: TOP OF CURBS TO TOP OF LOWER BASE LIFT	0.44	0.48	0.57	0.64	0.70	0.79	0.87	0.90	0.98	1.00	1.00	—	
D: TOP OF CURBS TO TOP OF SUBGRADE	0.69	0.73	0.80	0.87	0.93	1.01	1.08	1.12	1.19	1.21	1.21	1.23	

COMBINED CURB & GUTTER



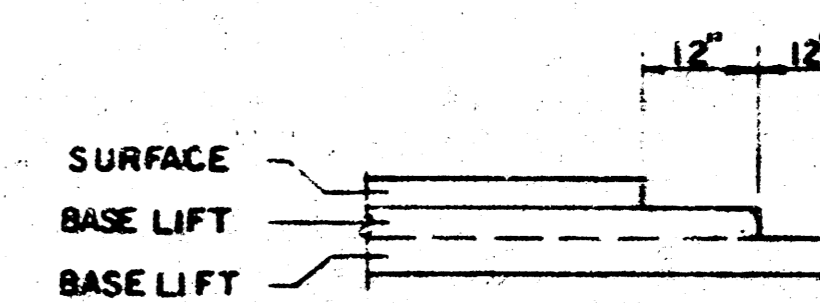
ROLL TYPE COMBINED CURB & GUTTER



GENERAL NOTES

- 1) THE ASPHALTIC CONCRETE PAVEMENT BETWEEN THE COMBINED CURB AND GUTTER SHALL BE PAID AS SQUARE YARDS OF 7 1/2" ASPHALTIC CONCRETE (5" BITUMINOUS BASE).
- 2) THE BITUMINOUS BASE UNDER AND BEHIND THE COMBINED CURB AND GUTTER SHALL BE PAID AS SQUARE YARDS OF 2 1/2" BITUMINOUS BASE.
- 3) A TACK COAT OF ENULSIFIED ASPHALT (SC-1H OR CSS-1H) SHALL BE APPLIED AT AN APPROXIMATE RATE OF 0.05 GALLONS PER SQUARE YARD BETWEEN EACH LIFT OF ASPHALTIC MATERIAL.
- 4) BITUMINOUS BASE AND ASPHALTIC CONCRETE WEARING SURFACE SHALL BE PLACED WITH A LAYDOWN MACHINE HAVING AUTOMATIC CONTROLS FOR LINE AND GRADE.
- 5) CONSTRUCTION JOINTS IN EACH LIFT SHALL BE STAGGERED A MINIMUM DISTANCE OF ONE (1) FOOT FROM JOINTS IN PRECEDING LIFTS AND PLACED SO THAT A JOINT WILL BE CONSTRUCTED ON THE CENTERLINE OF THE TOP LIFT.
- 6) CONTRACTOR TO BID ONLY ONE SUBGRADE TREATMENT ALTERNATE WHEN ALTERNATES ARE PROVIDED IN THE PROPOSAL AND CONTRACT. THE ALTERNATE CHOSEN BY THE SUCCESSFUL BIDDER SHALL BE USED IN CONSTRUCTING THIS PROJECT.

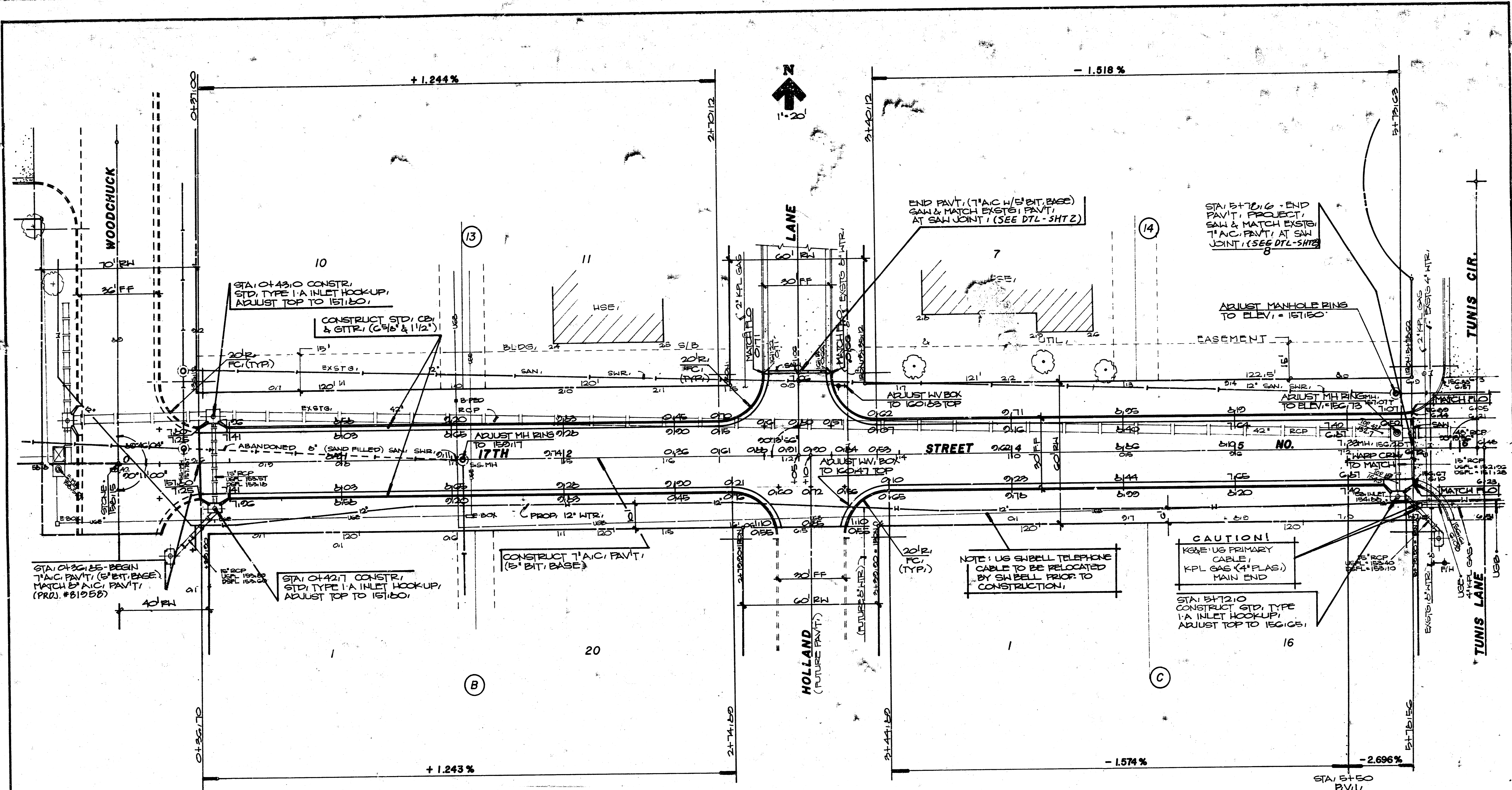
TRANSVERSE CONSTRUCTION JOINTS



TRANSVERSE CONSTRUCTION JOINTS SHALL BE CONSTRUCTED AT 12" STAGGERED JOINTS IN THE SURFACE, BASE LIFT AND SUBGRADE. THE JOINTS SHALL BE CONSTRUCTED IN THE MIDDLE OF THE PAVEMENT WIDTH. THE JOINTS SHALL BE CONSTRUCTED IN THE MIDDLE OF THE PAVEMENT WIDTH. THE JOINTS SHALL BE CONSTRUCTED IN THE MIDDLE OF THE PAVEMENT WIDTH.

7 INCH RESIDENTIAL ASPHALTIC CONCRETE PAVEMENT WITH 5 INCH BITUMINOUS BASE
 CITY OF WICHITA, KANSAS
 PROJECT NUMBER
 472-76-245-51004-000-000-001

FILMED FROM THE BEST AVAILABLE COPY



STA. 0+26.25-BEGIN
T1A/C PAVT. (5' BIT, BASE)
MATCH EXIST. PAVT.
(PROJ. #B1958)

STA. 0+42.7 CONSTR.
STD. TYPE I-A INLET HOOKUP,
ADJUST TOP TO 151.60.

CONSTRUCT T1A/C PAVT.
(5' BIT, BASE)

NOTE: US SBBELL TELEPHONE
CABLE TO BE RELOCATED
BY SBBELL PRIOR TO
CONSTRUCTION.

CAUTION!
K&E US PRIMARY
CABLE,
KPL GAS (4" PLAS.)
MAIN END

STA. 5+72.10
CONSTRUCT STD. TYPE
I-A INLET HOOKUP,
ADJUST TOP TO 151.65.

STA. 5+50
PVI,
NO VIC,
ELEV. = 151.42

EARTHWORK QUANTITIES
EXCAVATION 2398 C.Y.
SUBGRADE MANIP. 2097 S.Y.

WTR. VLV. BOX ADJUST. TABLE

STA.	LOC.	EXISTG. ELEV.	FINISH ELEV.
3+27	21' RT.	160.0	160.47
3+26	31' LT.	160.83	160.83

17TH STREET
STA. 0+00 to STA. 5+76.10

BAUGHMAN COMPANY P. A.
SURVEYING & ENGINEERING
318/282-7271 • 315 ELLIS • WICHITA, KANSAS 67211

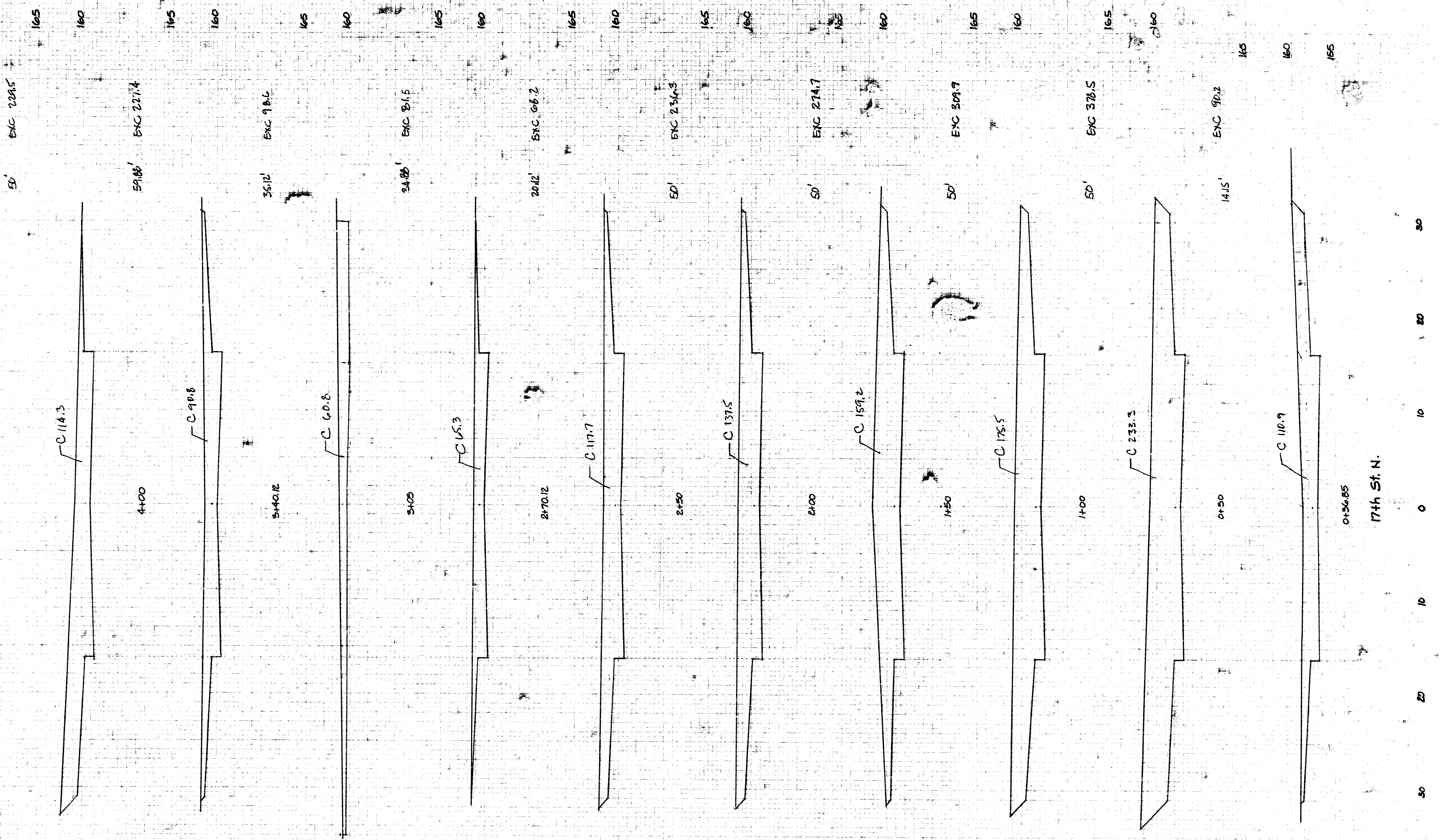
472-76-245-81664 000-000-001

DESIGN	TJR	DRAWN	EGNY	APPROVED	DATE	SCALE	NOTED
					OCT. 00		

SHEET 3 OF 5

FILMED FROM THE BEST
AVAILABLE COPY

T5

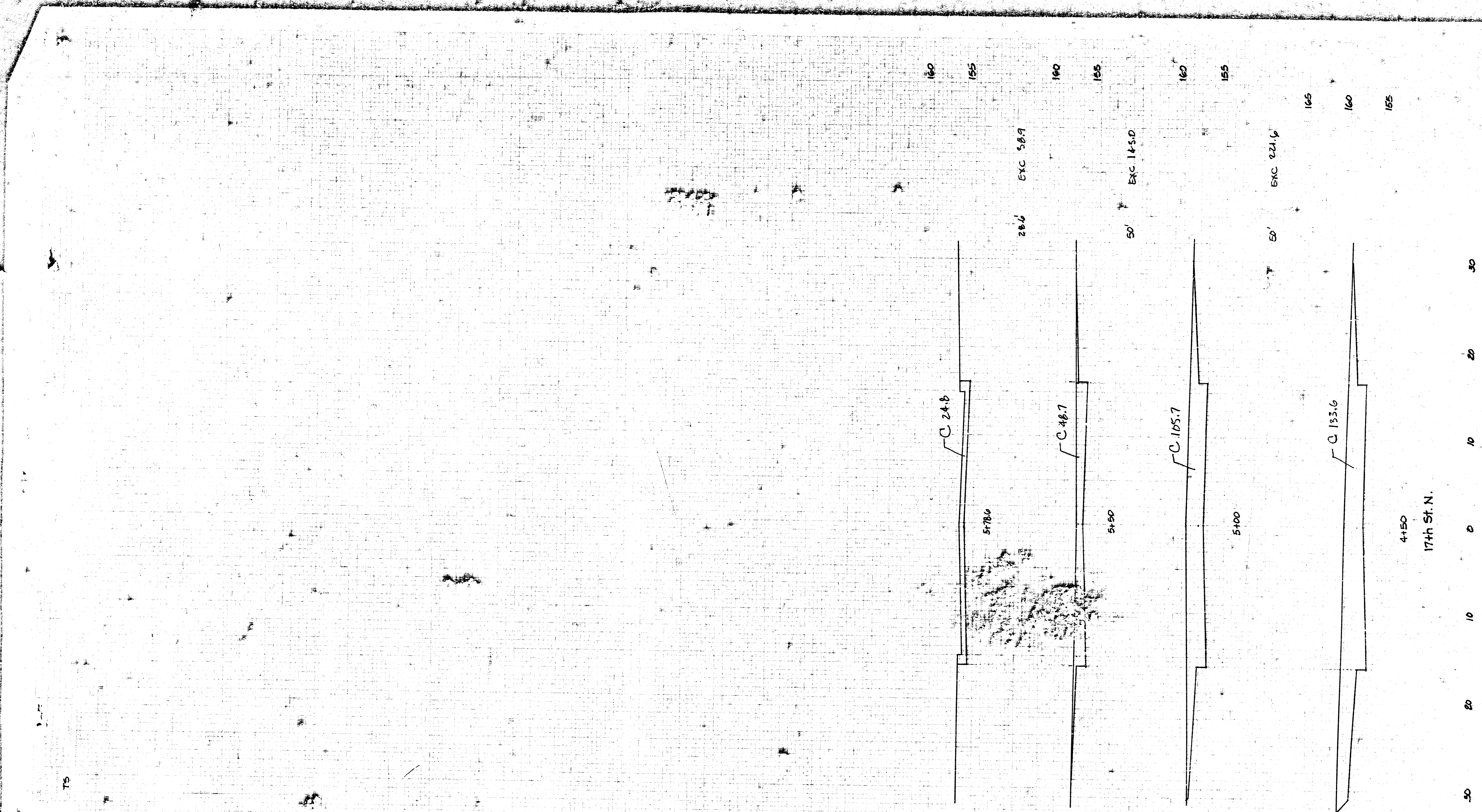


PROJECT TOTALS
 2398.3 C.Y.
 0
 0
 0

SHEET TOTAL
 EXCAVATION 1934.7 C.Y.
 LOOSE FILL 0
 COMPACTED FILL 0
 MANIPULATED FILL 0

472-76-245-81664-000-000-001 4/5

FILMED FROM THE BEST AVAILABLE COPY



SHEET TOTAL
 EXCAVATION 403.5 C.Y.
 LOOSE FILL 0
 COMPACTED FILL 0
 MANIPULATED FILL 0

472-76-245-81664-000-000-001

5/1

FILMED FROM THE BEST
 AVAILABLE COPY