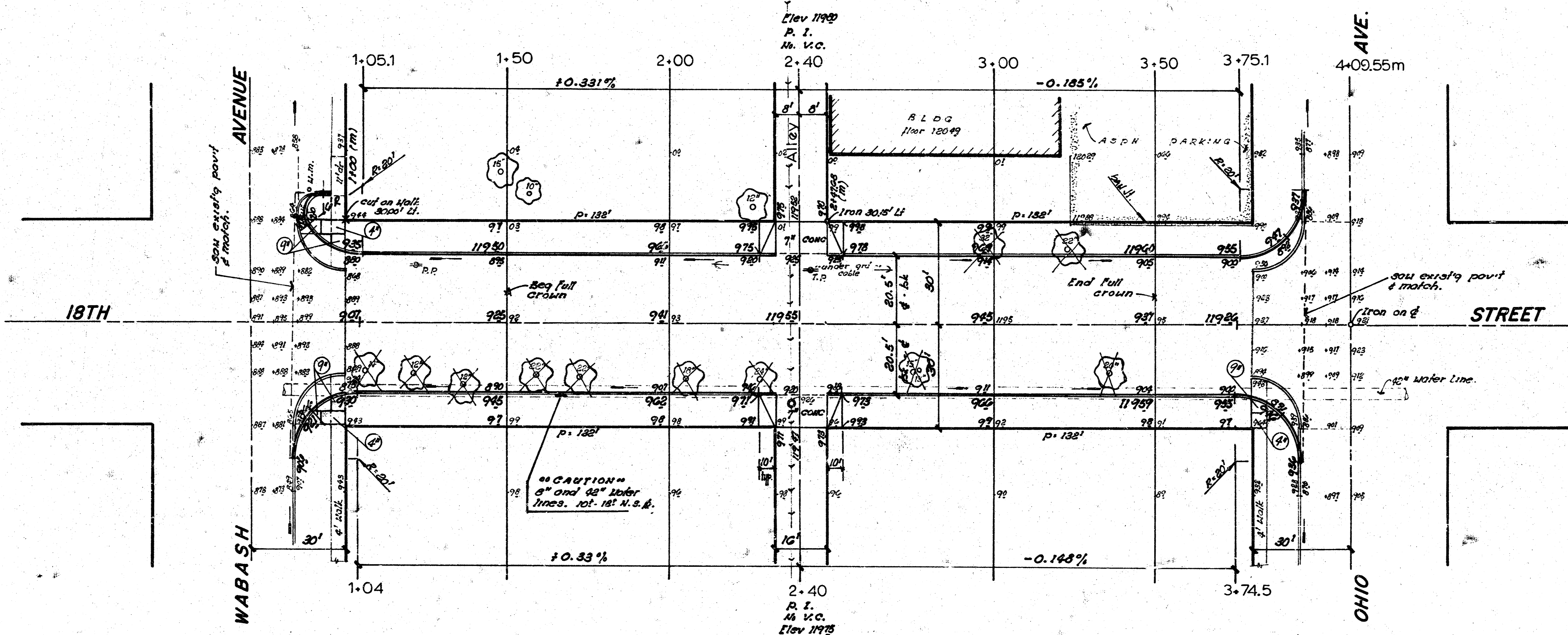


S.M. 11922 "D" Top North Curb 18TH ST @ W.L. WABASH.

CAUTION
UNDERGROUND
UTILITIES
 Please check with K & E or
 Southwestern Bell
 Telephone Co. for location



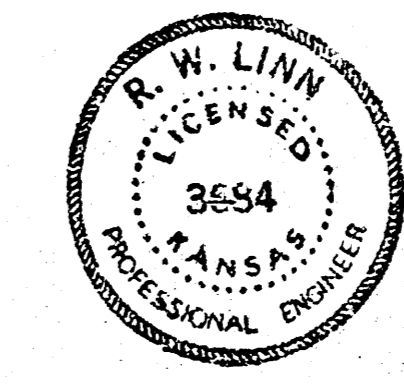
Survey done by D.L.K. #282
 Plan check
 E.C.C.
 1/20/76

NOTE
 Excavated material suitable for fill
 to be delivered to 18TH STREET bet
 C.R.T.P. R.R. and W.L. WABASH.

NOTE - TREES TO BE REMOVED ARE MARKED THIS
 EXCEPT THAT ANY TREE MARKED FOR REMOVAL WHICH
 IN THE OPINION OF THE ENGINEER CAN BE SAVED,
 SHALL BE SAVED.

SUB-GRADE
 TYPE OF SUB-GRADE TREATMENT SHALL BE DE-
 TERMINED BY THE FIELD ENGINEER. SUB-GRADE
 TREATMENT MAY CONSIST OF LIME TREATMENT,
 CEMENT TREATMENT, SUB-GRADE MODIFICA-
 TION, OR ANY COMBINATION OF THESE.

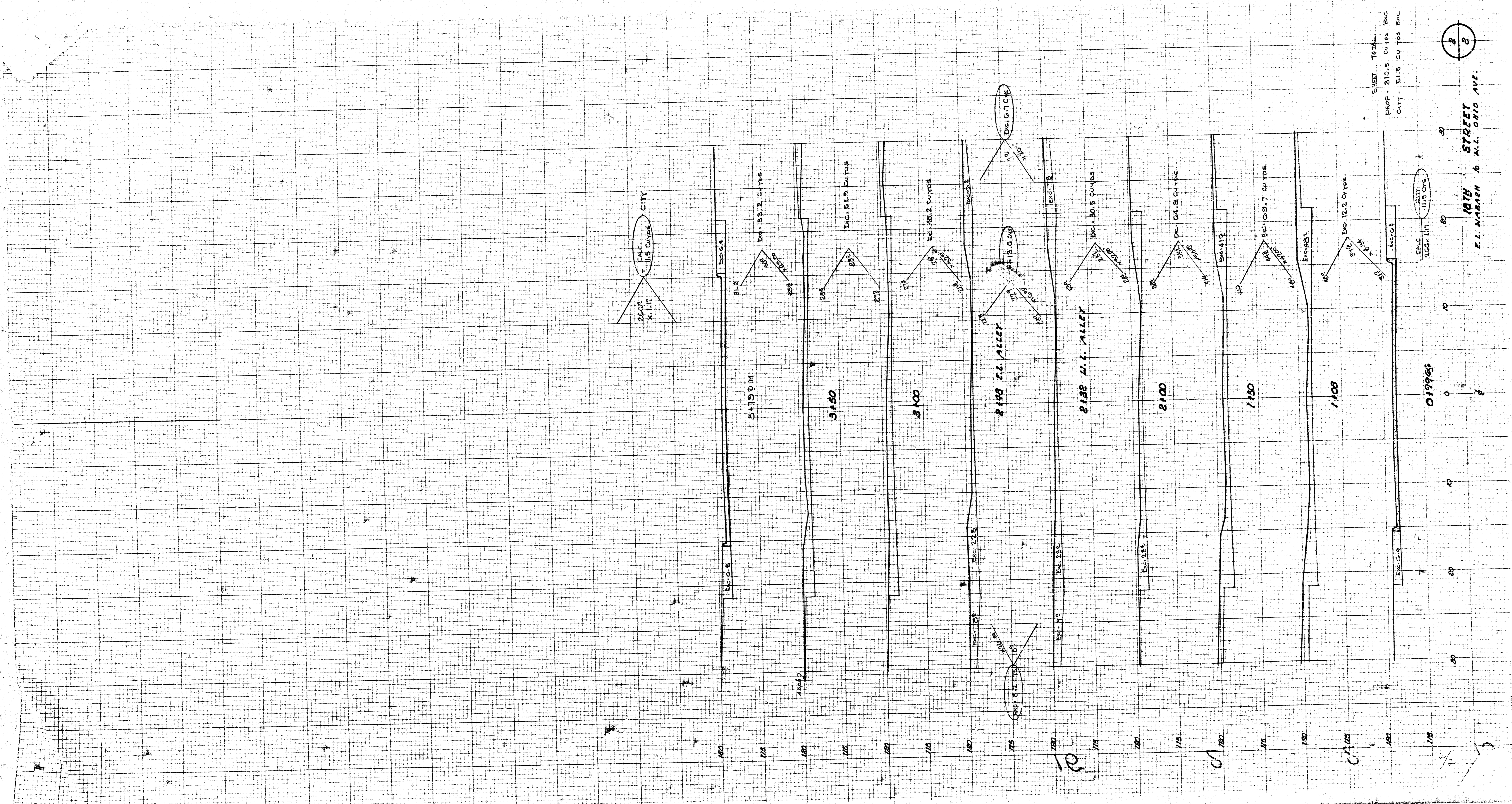
"EARTHWORK"
"PROPERTY"
 EXCAVATION 310.5 cu yds
 110% 31.1
 341.6 cu yds
"CITY"
 EXCAVATION 51.5 cu yds
 110% 5.2
 56.7 cu yds



1/2

18TH STREET
 E.L. WABASH To W.L. OHIO
 (40'-7" Concrete Pavt w Int Curb)
CITY of WICHITA, KANSAS
 R.W. LINN CITY ENGINEER
 Date April, 1976 Proj No. WMKB533430

FILMED FROM THE BEST AVAILABLE COPY



SHEET TOTAL
 PROP. 210.5 CU YDS. Exc
 CITY 515 CU YDS. Exc

Exc. G. 1.17
 Exc. G. 1.18
 Exc. G. 1.19
 Exc. G. 1.20
 Exc. G. 1.21
 Exc. G. 1.22
 Exc. G. 1.23
 Exc. G. 1.24
 Exc. G. 1.25
 Exc. G. 1.26
 Exc. G. 1.27
 Exc. G. 1.28
 Exc. G. 1.29
 Exc. G. 1.30
 Exc. G. 1.31
 Exc. G. 1.32
 Exc. G. 1.33
 Exc. G. 1.34
 Exc. G. 1.35
 Exc. G. 1.36
 Exc. G. 1.37
 Exc. G. 1.38
 Exc. G. 1.39
 Exc. G. 1.40
 Exc. G. 1.41
 Exc. G. 1.42
 Exc. G. 1.43
 Exc. G. 1.44
 Exc. G. 1.45
 Exc. G. 1.46
 Exc. G. 1.47
 Exc. G. 1.48
 Exc. G. 1.49
 Exc. G. 1.50
 Exc. G. 1.51
 Exc. G. 1.52
 Exc. G. 1.53
 Exc. G. 1.54
 Exc. G. 1.55
 Exc. G. 1.56
 Exc. G. 1.57
 Exc. G. 1.58
 Exc. G. 1.59
 Exc. G. 1.60
 Exc. G. 1.61
 Exc. G. 1.62
 Exc. G. 1.63
 Exc. G. 1.64
 Exc. G. 1.65
 Exc. G. 1.66
 Exc. G. 1.67
 Exc. G. 1.68
 Exc. G. 1.69
 Exc. G. 1.70
 Exc. G. 1.71
 Exc. G. 1.72
 Exc. G. 1.73
 Exc. G. 1.74
 Exc. G. 1.75
 Exc. G. 1.76
 Exc. G. 1.77
 Exc. G. 1.78
 Exc. G. 1.79
 Exc. G. 1.80
 Exc. G. 1.81
 Exc. G. 1.82
 Exc. G. 1.83
 Exc. G. 1.84
 Exc. G. 1.85
 Exc. G. 1.86
 Exc. G. 1.87
 Exc. G. 1.88
 Exc. G. 1.89
 Exc. G. 1.90
 Exc. G. 1.91
 Exc. G. 1.92
 Exc. G. 1.93
 Exc. G. 1.94
 Exc. G. 1.95
 Exc. G. 1.96
 Exc. G. 1.97
 Exc. G. 1.98
 Exc. G. 1.99
 Exc. G. 2.00