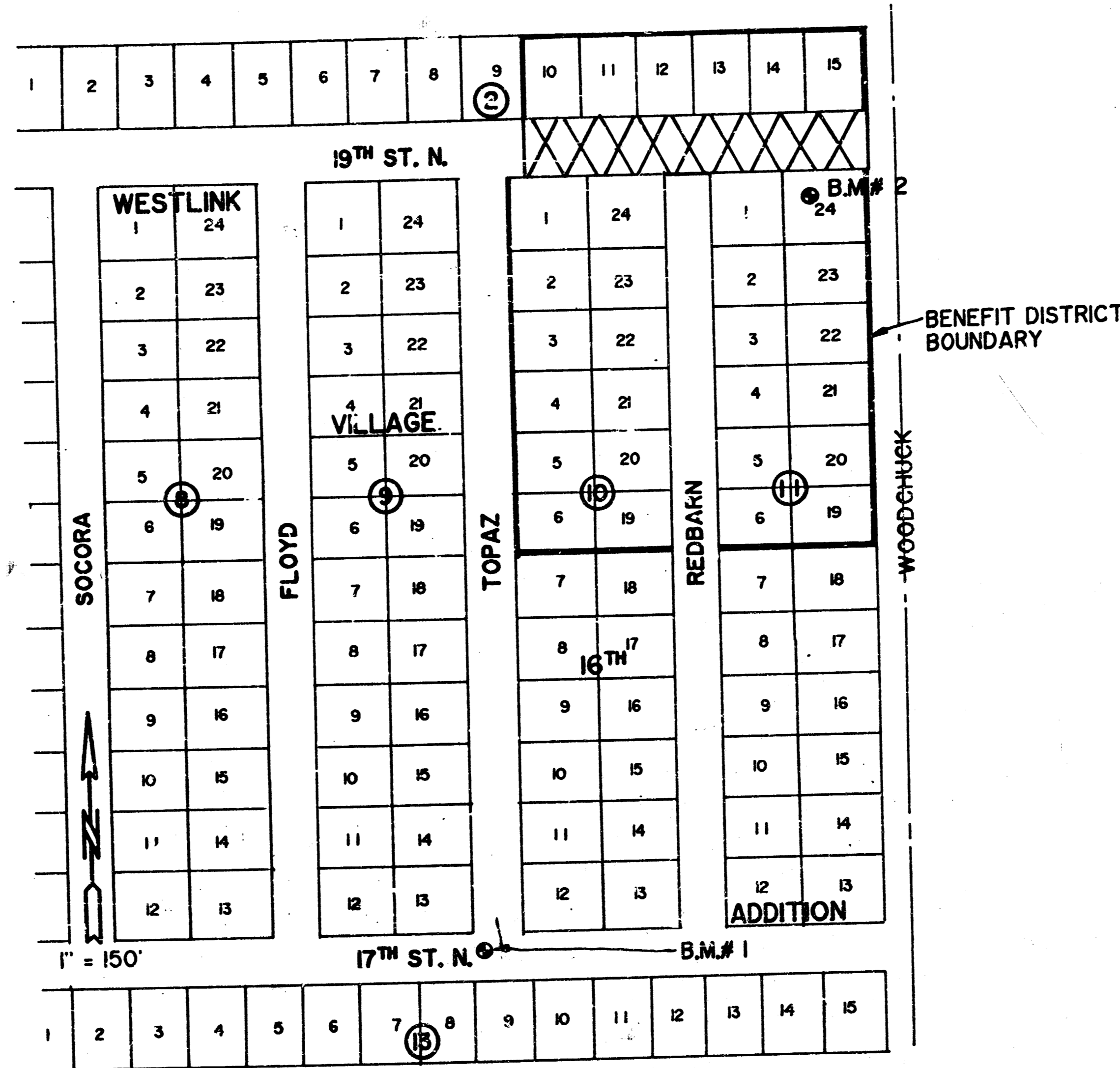


CITY OF WICHITA, KANSAS
STREET IMPROVEMENTS
WESTLINK VILLAGE 16TH ADDITION
19TH STREET NORTH
FROM W.L. LOT 10, BLOCK 2 TO THE W.L. OF WOODCHUCK
PROJECT NO. 472-76-245-81869-000-000-001



LOCATION MAP

INDEX # : 607697

MICHAEL E. LINDEBAK, P.E., CITY ENGINEER

GENERAL NOTES:

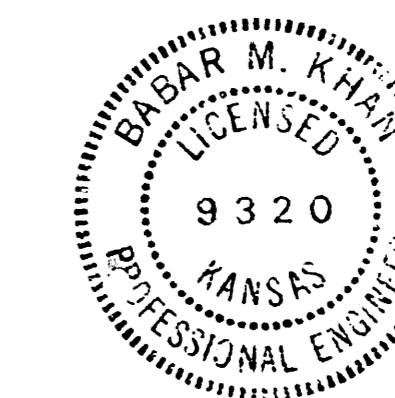
1. Existing utilities and their location, as shown on the plans, represent the best information obtainable for design. The Contractor will be required to work around existing utilities within the Right-of-Way which do not conflict with proposed construction.
2. A saw cut of at least one-half the depth of existing surface courses or one-fourth the depth of existing total pavement thickness shall be provided at locations where proposed construction abuts an existing surface course or pavement for which partial removal of that surface or pavement is required. Such saw cuts will not be paid directly and this cost shall be considered subsidiary to the removal of the surface or pavement.
3. Rubble from the removal of miscellaneous structures and excess excavation which is to be wasted shall be disposed of on sites to be provided by the Contractor. These sites shall be approved by the Engineer as to suitability, appearance and site location. Locations that, in the opinion of the Engineer, will leave an unsightly appearance will not be approved.
4. Limits of earthwork shall match existing ground elevations at the right-of-way line unless otherwise noted on the plans with a new finished grade elevation. When a new finished grade elevation is shown, the earthwork shall extend one foot beyond the right-of-way line and then slope up or down using permissible slopes to match the existing ground surface.
5. The Contractor shall be responsible for preserving property irons. The Contractor will be required to re-establish any property irons which are damaged or destroyed by his construction operations. Such irons shall be re-established by a licensed land surveyor or a licensed professional engineer in accordance with state laws.
6. The City of Wichita's Sewer Maintenance Division of the Department of Water and Water Pollution Control has televised sewers within the limits of the project and have found no defects requiring repairs. The Division shall be notified and afforded the opportunity to re-televise sewer lines after subgrade work has been completed and prior to pavement construction to determine if such sewer lines have been damaged by the Contractor's operations. Damaged sewer lines will be repaired by the Contractor, as directed by the Engineer, at the Contractor's expense. Television logs are available for inspection by the Contractor during normal office hours at Sewer Maintenance Division's office at City Hall.

BENCH MARKS:

- B.M. # 1: Chisled 'B' at the northeast corner of inlet located at the northeast corner of intersection of 17th Street N. & Topaz. El.-159.83
- B.M. # 2: R/R spike in a 30" Elm tree; 197 feet east and 49 feet south of intersection of 19th Street N. and Redbarn. El.- 157.77

INDEX:

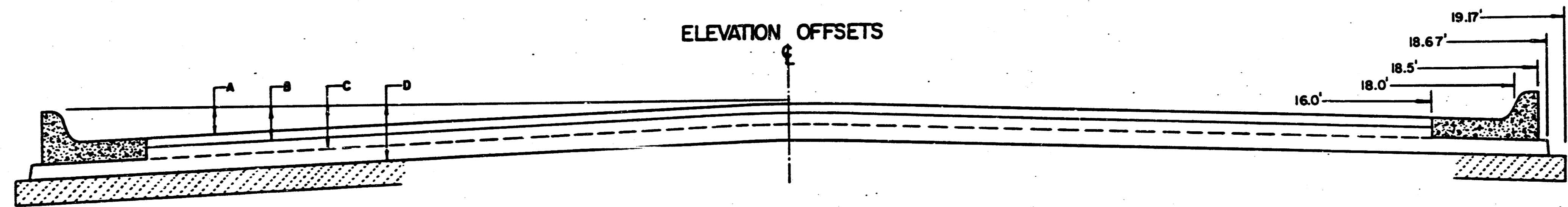
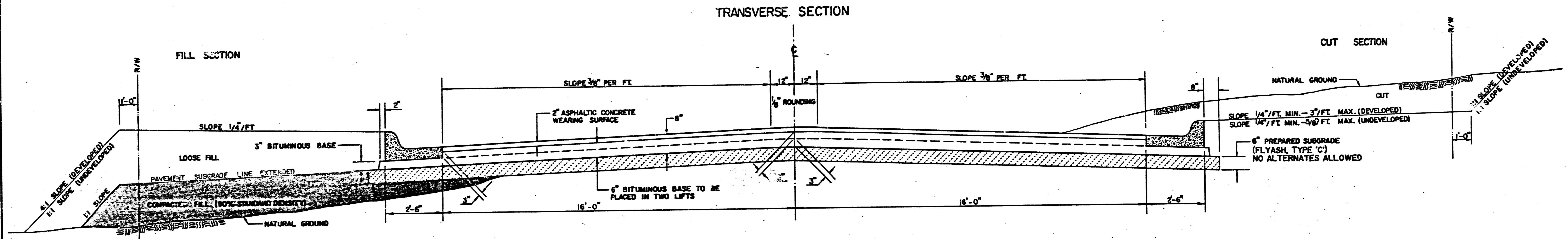
SHEET 1	TITLE SHEET
SHEET 2	TYPICAL 37' PAVEMENT DETAIL
SHEET 3	PLAN SHEET
SHEET 4-5	CROSS-SECTION SHEETS



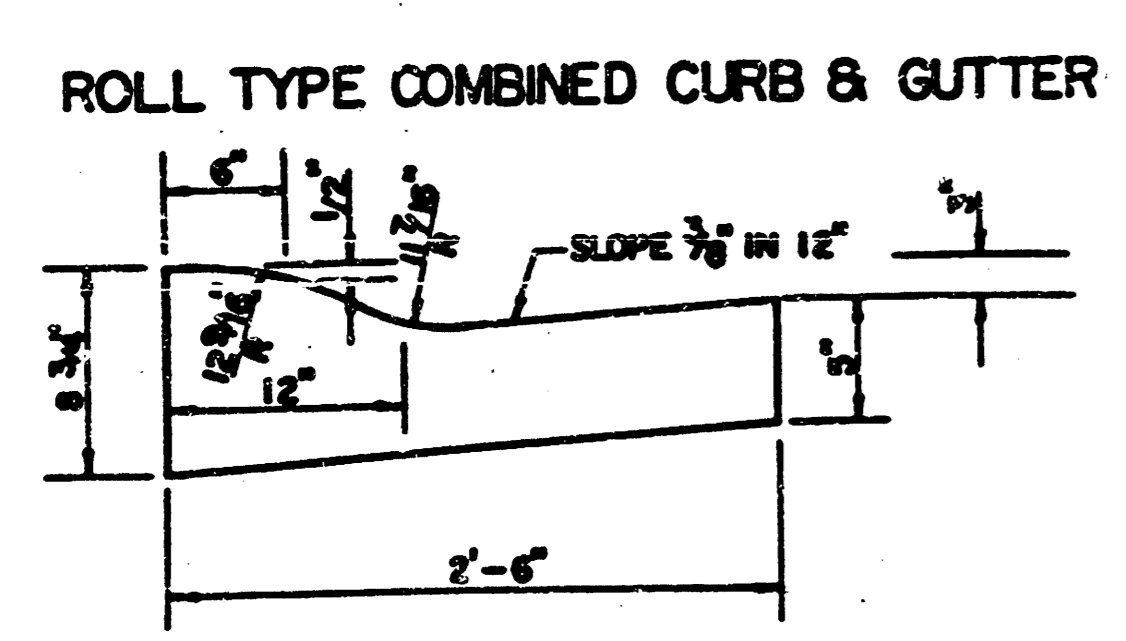
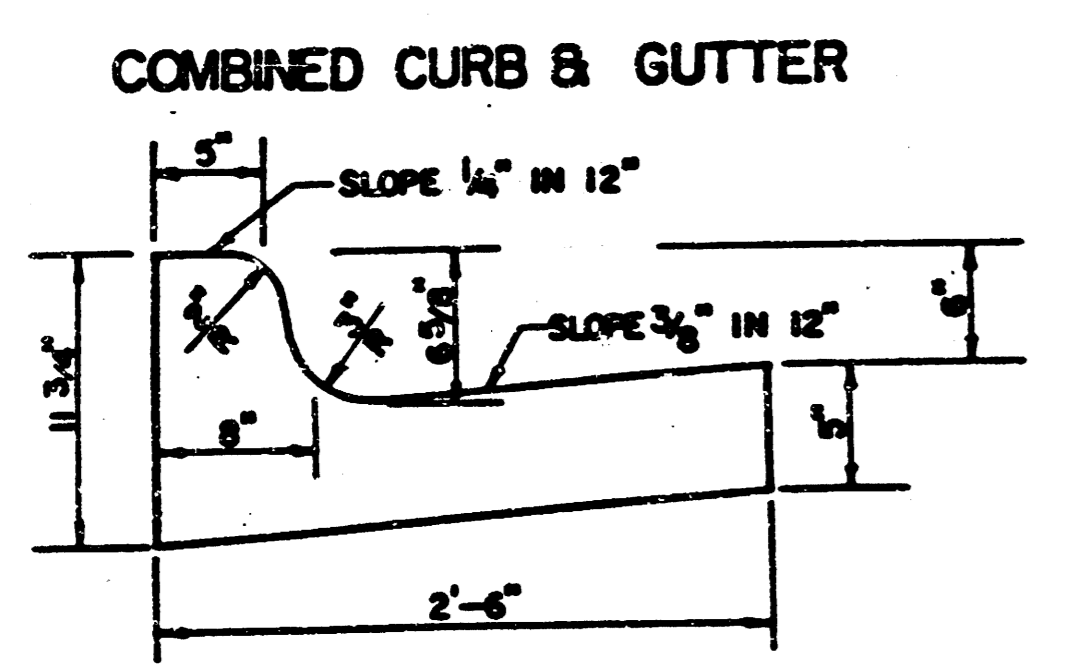
MUNICIPAL ENGINEERS Civil Engineers & Land Surveyors 264 Laurin, Suite 501 Wichita, Kansas 67211		DRAWN BY: M.W. REVISION:
SCALE:	APPROVED BY: B.K.	DATE: 3-89
DRAWING NUMBER		1 OF 5

FILMED FROM THE BEST AVAILABLE COPY

TYPICAL 37' PAVEMENT DETAILS



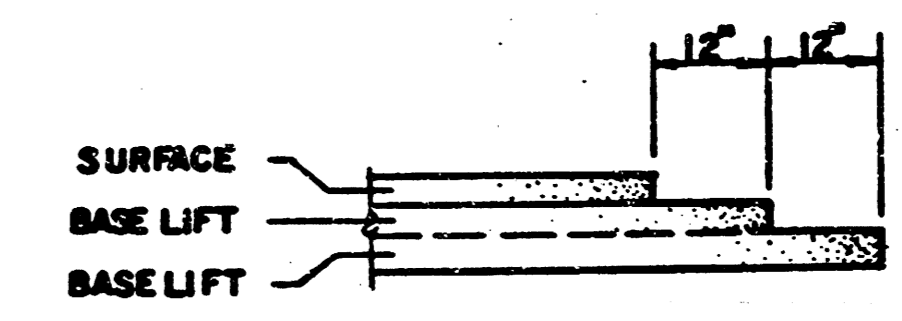
	DISTANCE FROM CENTERLINE (LT. & RT.)												
	0	2	4	6	8	10	12	14	16	18	18.5	18.67	19.17
A: TOP OF CURBS TO TOP OF SURFACE LIFT	.01	.05	.11	.18	.24	.30	.36	.43	.49	—	—	—	—
B: TOP OF CURBS TO TOP OF UPPER BASE LIFT	.17	.22	.28	.34	.40	.47	.53	.59	.65	—	—	—	—
C: TOP OF CURBS TO TOP OF LOWER BASE LIFT	.42	.47	.53	.59	.65	.72	.78	.84	.90	.97	.98	.99	—
D: TOP OF CURBS TO TOP OF SUBGRADE	.67	.72	.78	.84	.90	.97	1.03	1.09	1.15	1.22	1.23	1.24	1.25



GENERAL NOTES

- 1) THE ASPHALTIC CONCRETE PAVEMENT BETWEEN THE COMBINED CURB AND GUTTER SHALL BE PAID AS SQUARE YARDS OF 8" ASPHALTIC CONCRETE (6" BITUMINOUS BASE).
- 2) THE BITUMINOUS BASE UNDER AND BEHIND THE COMBINED CURB AND GUTTER SHALL BE PAID AS SQUARE YARDS OF 3" BITUMINOUS BASE.
- 3) A TACK COAT OF EMULSIFIED ASPHALT (SC-1H OR CSS-1H) SHALL BE APPLIED AT AN APPROXIMATE RATE OF 0.05 GALLONS PER SQUARE YARD BETWEEN EACH LIFT OF ASPHALTIC MATERIAL.
- 4) BITUMINOUS BASE AND ASPHALTIC CONCRETE WEARING SURFACE SHALL BE PLACED WITH A LAYDOWN MACHINE HAVING AUTOMATIC CONTROLS FOR LINE AND GRADE.
- 5) CONSTRUCTION JOINTS IN EACH LIFT SHALL BE STAGGERED A MINIMUM DISTANCE OF ONE (1) FOOT FROM JOINTS IN PRECEDING LIFTS AND PLACED SO THAT A JOINT WILL BE CONSTRUCTED ON THE CENTERLINE OF THE TOP LIFT.
- 6) CONTRACTOR TO BID ONLY ONE SUBGRADE TREATMENT ALTERNATE WHEN ALTERNATES ARE PROVIDED IN THE PROPOSAL AND CONTRACT. THE ALTERNATE CHOSEN BY THE SUCCESSFUL BIDDER SHALL BE USED IN CONSTRUCTING THIS PROJECT.

TRANSVERSE CONSTRUCTION JOINTS



TRANSVERSE CONSTRUCTION JOINTS SHALL BE CONSTRUCTED IN FLEXIBLE BASE PAVEMENTS AT LOCATIONS WHERE PAVEMENT JOINTS EXISTING FLEXIBLE BASE PAVEMENT AS SHOWN BY THE DETAIL. ALL COSTS ASSOCIATED WITH THE CONSTRUCTION OF THE TRANSVERSE JOINT SHALL BE INCLUDED IN THE BID PRICE FOR SQUARE YARDS 8" ASPHALTIC CONCRETE (6" BITUMINOUS BASE).

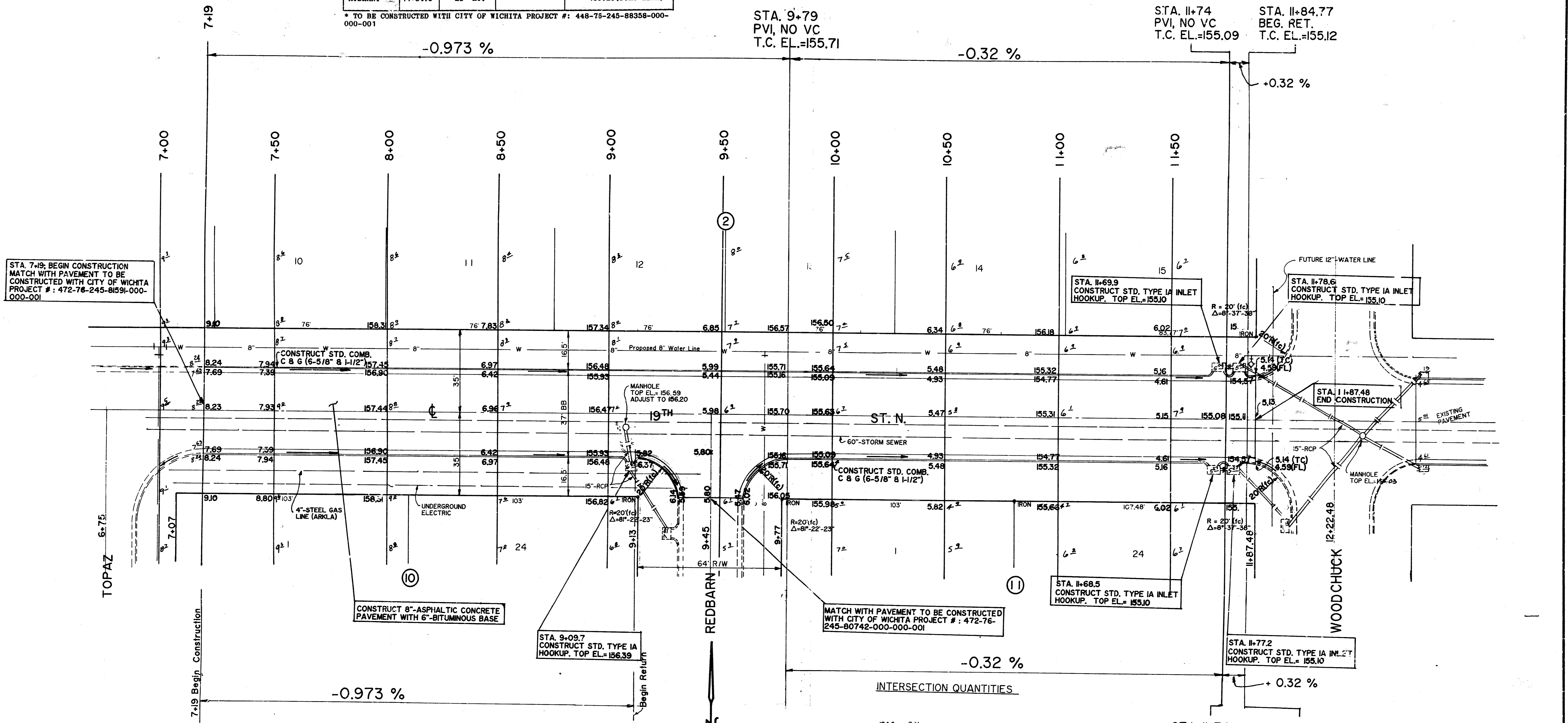
8 INCH RESIDENTIAL ASPHALTIC CONCRETE PAVEMENT WITH 6 INCH BITUMINOUS BASE
CITY OF WICHITA, KANSAS
 PROJECT NUMBER
 472-76-245-8069-000-000-001

FILMED FROM THE BEST AVAILABLE COPY

ADJUSTMENTS

TYPE	STA.	OFFSET	EXISTING ELEVATION	ADJUST TO ELEVATION
MANHOLE	9+07.5	6' RT.	156.59	156.20
WATER VALVE	6+99	25' LT.	*	158.60
WATER VALVE	6+97	27' LT.	*	158.60
WATER VALVE	7+01	27' LT.	*	158.60
WATER VALVE	9+89	25' LT.	*	156.10
WATER VALVE	11+84.5	25' LT.	*	155.43
FIRE HYDRANT	11+84.5	23' LT.	*	155.28(BURY LINE)

* TO BE CONSTRUCTED WITH CITY OF WICHITA PROJECT #: 448-75-245-88358-000-000-001



STA. 7+19; BEGIN CONSTRUCTION MATCH WITH PAVEMENT TO BE CONSTRUCTED WITH CITY OF WICHITA PROJECT #: 472-76-245-81591-000-001

STA. 11+69.9 CONSTRUCT STD. TYPE IA INLET HOOKUP. TOP EL.=155.10

STA. 11+78.6 CONSTRUCT STD. TYPE IA INLET HOOKUP. TOP EL.=155.10

CONSTRUCT 8"-ASPHALTIC CONCRETE PAVEMENT WITH 6"-BITUMINOUS BASE

MATCH WITH PAVEMENT TO BE CONSTRUCTED WITH CITY OF WICHITA PROJECT #: 472-76-245-80742-000-000-001

STA. 9+09.7 CONSTRUCT STD. TYPE IA HOOKUP. TOP EL.=156.39

STA. 11+68.5 CONSTRUCT STD. TYPE IA INLET HOOKUP. TOP EL.=155.10

STA. 11+77.2 CONSTRUCT STD. TYPE IA INLET HOOKUP. TOP EL.=155.10

STA. 9+11
BEG. RET.
T.C. EL.=156.37

STA. 9+79
END RET.
T.C. EL.=155.71

STA. 11+74
PVI, NO VC
T.C. EL.=155.09

STA. 11+84.8
BEG. RET.
T.C. EL.=155.12

	EXCAVATION	LOOSE FILL	COMPACTED FILL
	1531 C.Y.	45 C.Y.	0
+ 10 %	153 C.Y.	5 C.Y.	
TOTAL	1684 C.Y.	50 C.Y.	

INTERSECTION QUANTITIES

- 194.6 S.Y. 8"-Asphaltic Concrete pavement With 6"-Bituminous Base
- 16.9 S.Y. 3"-Bituminous Base
- 56.8 L.F. Sid. Comb. C & G
- 142 C.Y. Excavation
- 215 S.Y. Manipulation
- Tons ~~lime~~ or 71 Tons Flyash

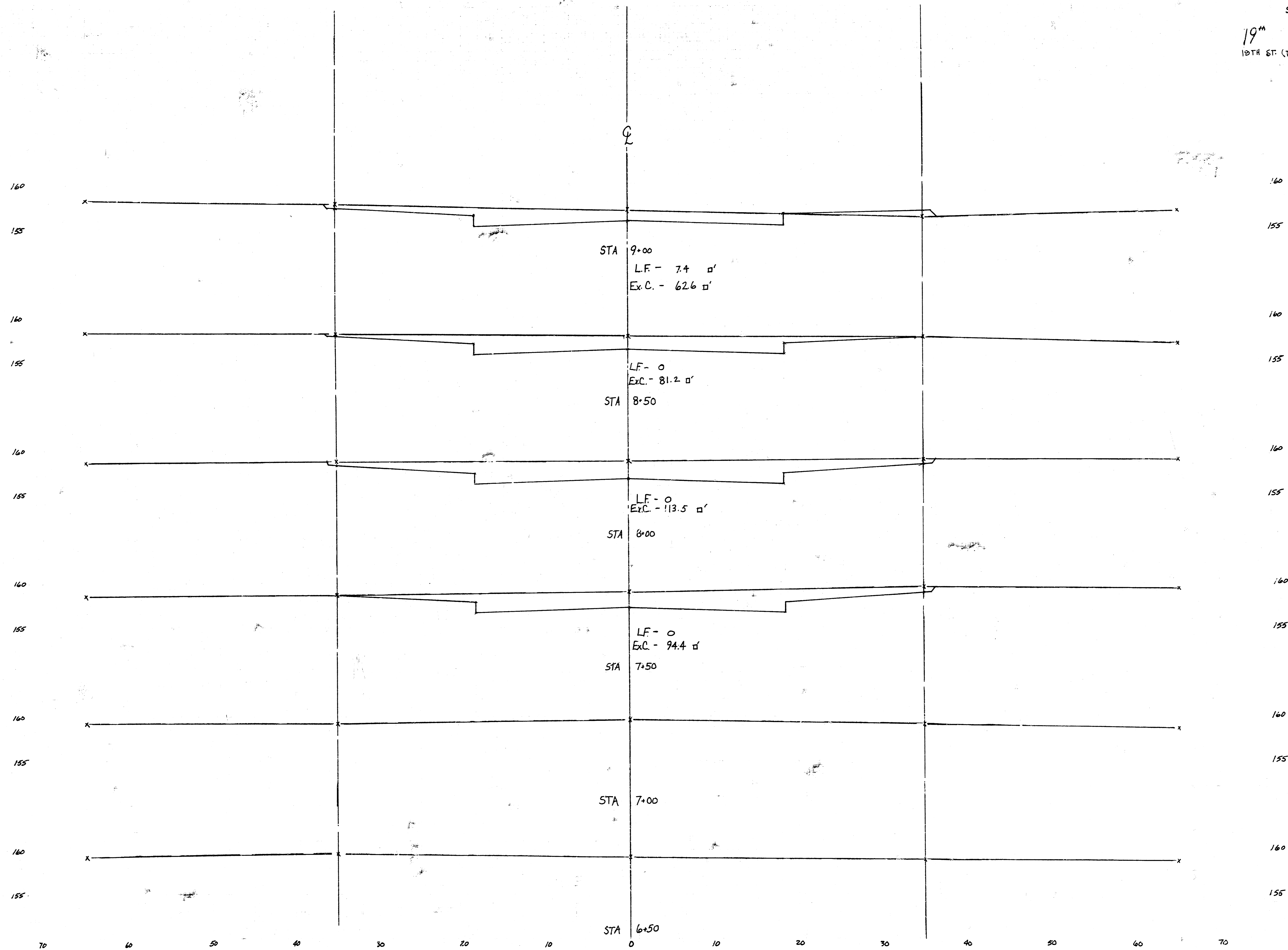
SCALE: 1" = 20'

PLAN SHEET		
SCALE: AS SHOWN	APPROVED BY: B.K.	DRAWN BY: M.W.
DATE: 2-89	REVISED	
19TH STREET TOPAZ to WOODCHUCK		
472-76-245-81869-000-000-001	DRAWING NUMBER	3 OF 5

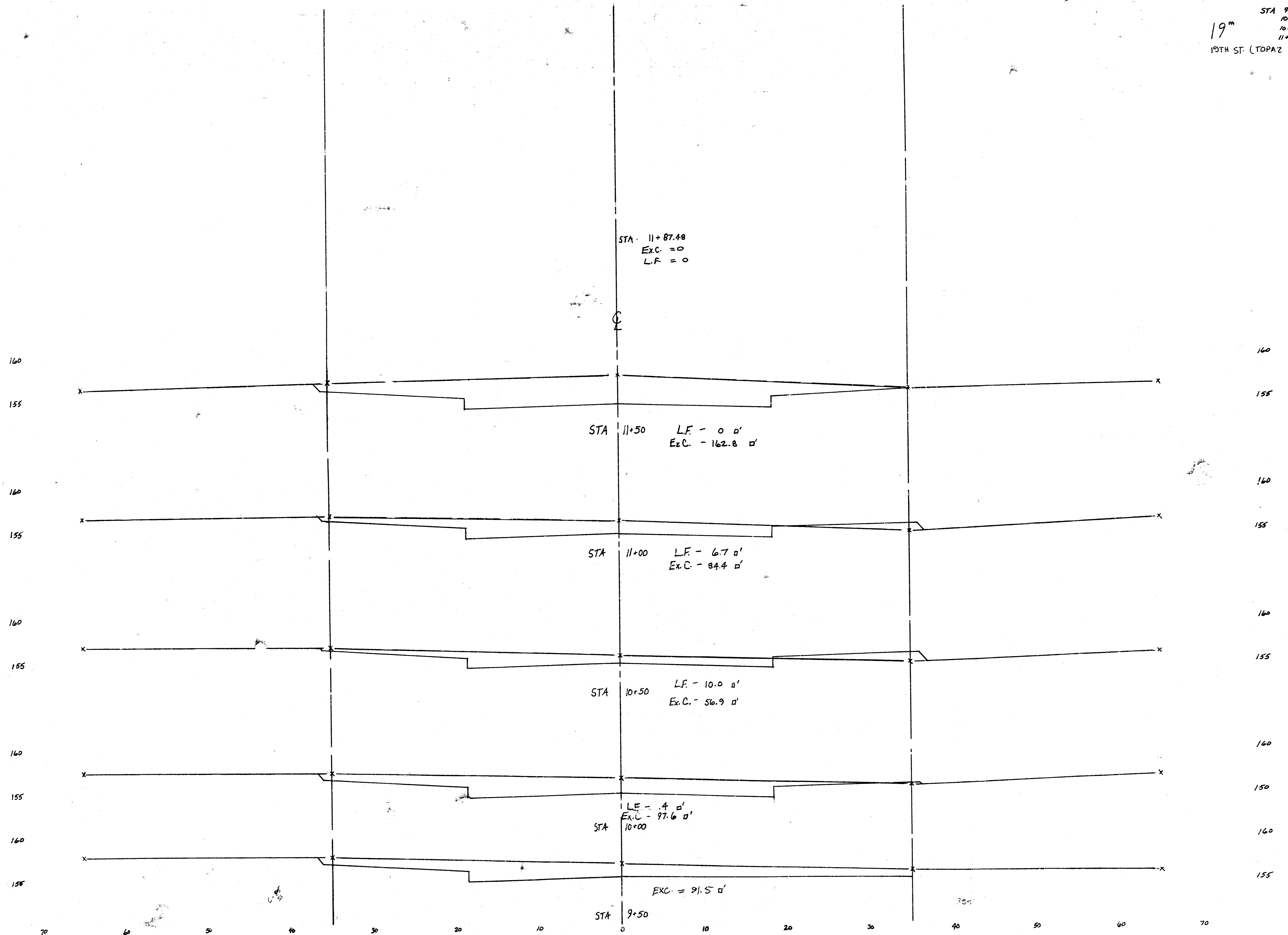
MUNICIPAL ENGINEERS
Civil Engineers & Land Surveyors
284 Leavenworth, Suite 201
Wichita, Kansas 67211

FILMED FROM THE BEST AVAILABLE COPY

19^m
STA 6+50 8+50
7+00 9+00
7+50
8+00 4 OF 5
19TH ST. (TOPAZ TO WOODCHUCK)



19"
STA 9+50 11+50
10+00
10+50
11+00 5 OF 5
19TH ST (TOPAZ TO WOODCHUCK)



FILMED FROM THE BEST AVAILABLE COPY