

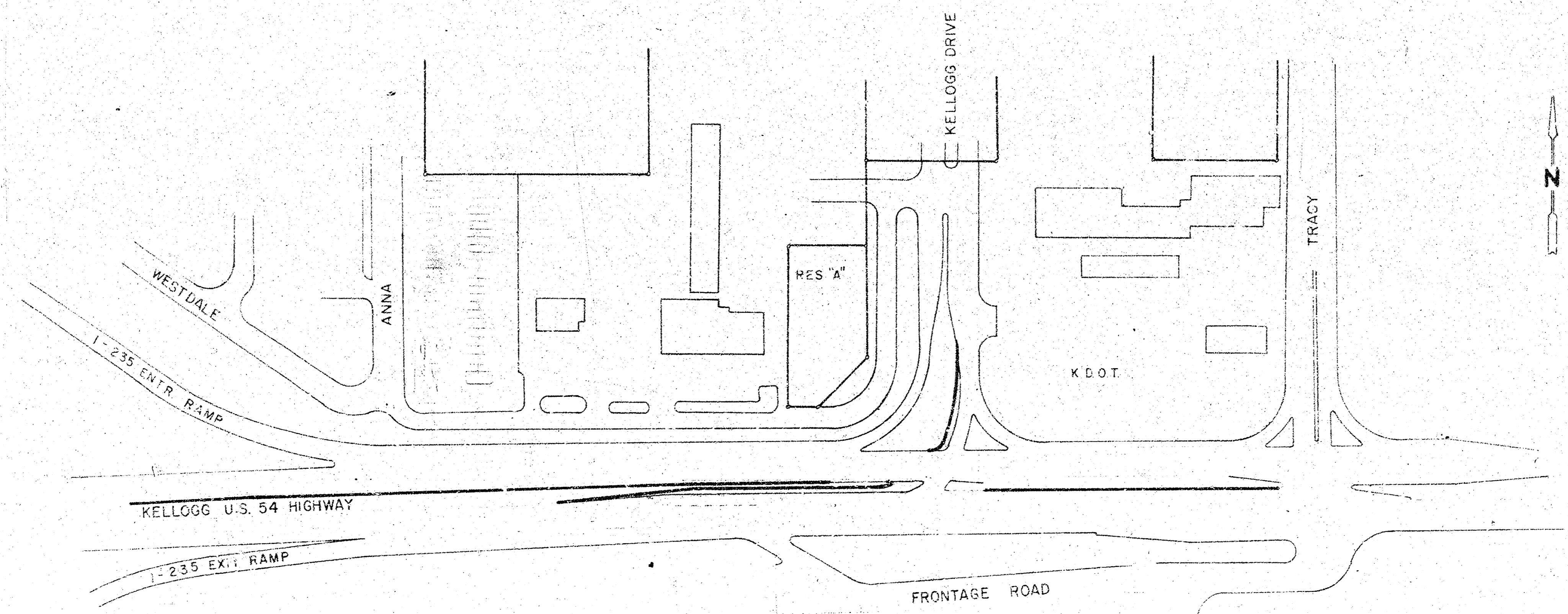
ENTRANCE FOR TOWNE WEST AT KELLOGG

INDEX OF SHEETS

1	TITLE SHEET
2 - 5	PAVING PLANS
6	PAVING DETAILS
7	CROSS SECTION

NOTE:
THE CONTRACTOR SHALL ARRANGE FOR AND PAY
ALL COSTS OF THE CITY OF WICHITA
INSTALLING THE TRAFFIC STRIPING.

870' W. W.L. KELLOGG DRIVE TO 350' E. EL KELLOGG DRIVE
R.W. BRUGGEMAN, DIRECTOR OF ENGINEERING / CITY ENGINEER
CITY OF WICHITA, KANSAS
PROJECT NUMBER 472-76-245-80000-000-000-008
BY: LAW / KINGDON, PA., WICHITA, KANSAS.



□ - PROPOSED CONSTRUCTION

NOTE: U.S. 54 TRAFFIC TO BE CARRIED THRU
CONSTRUCTION AT ALL TIMES.

CITY OF WICHITA
APPROVED
3-23-81
[Signature]

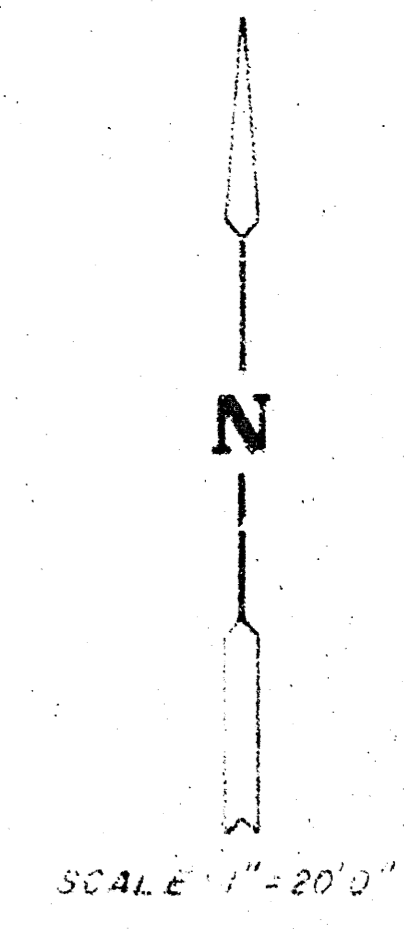
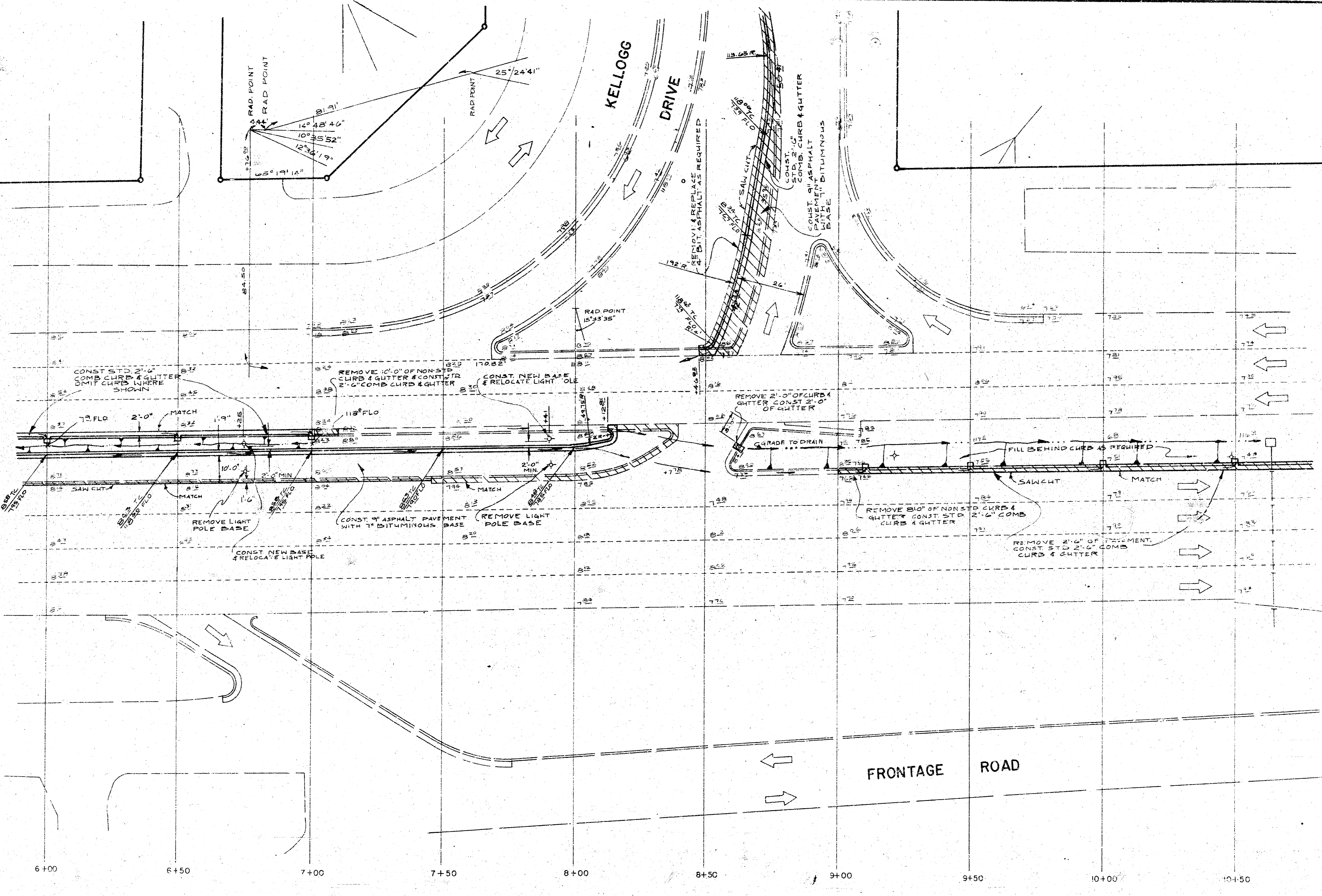
NOTE TO CONTRACTOR
This project will be constructed under
the supervision of the CITY ENGINEER
and conforming to the SPECIFICATIONS
of the CITY OF WICHITA. The CONTRACTOR
will reimburse the City of
Wichita for all costs of Engineering.

US. 54

KELLOGG DRIVE

HIGHWAY (KELLOGG)

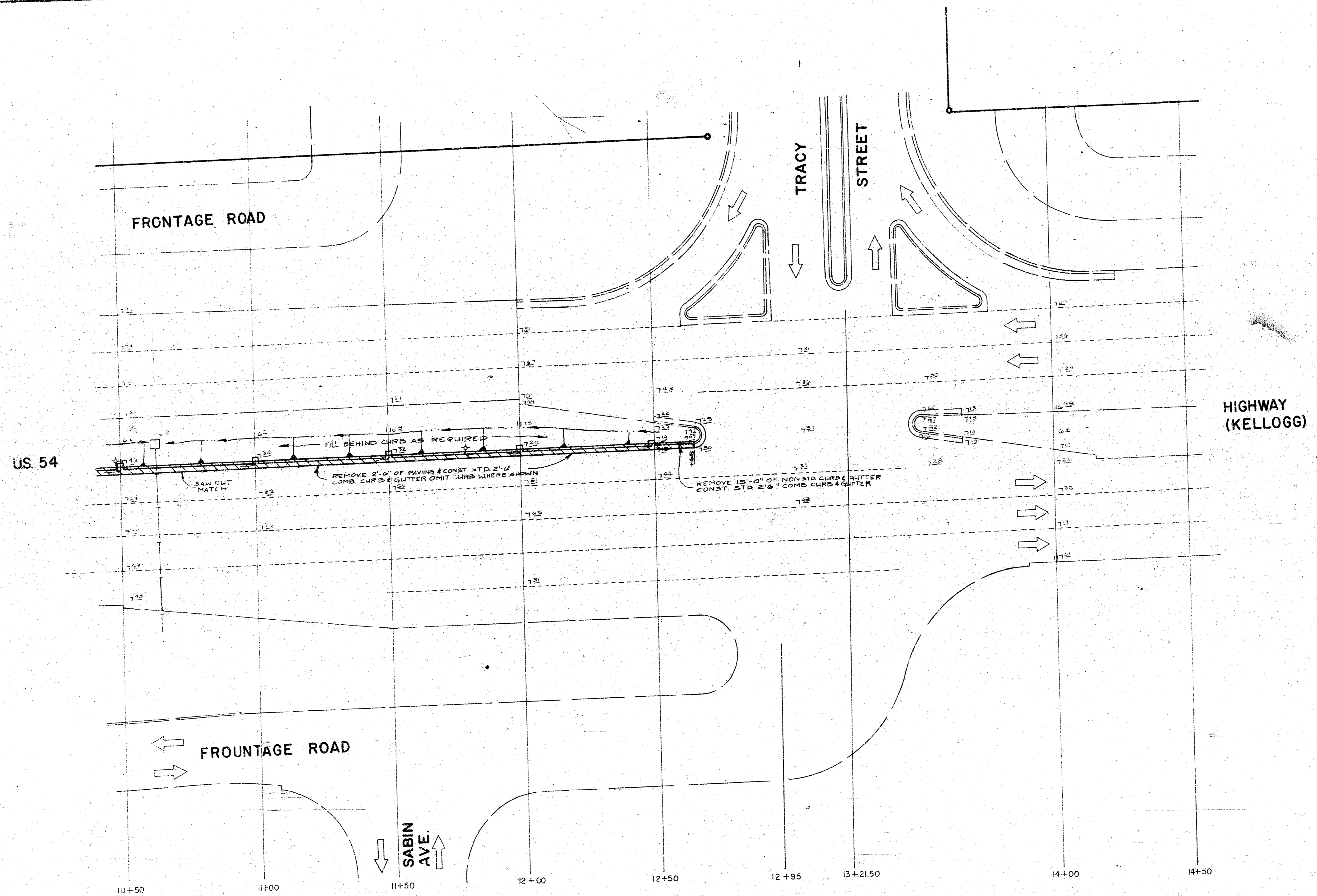
FRONTAGE ROAD



PROJECT NUMBER 477-75-245-80000-000-010-008

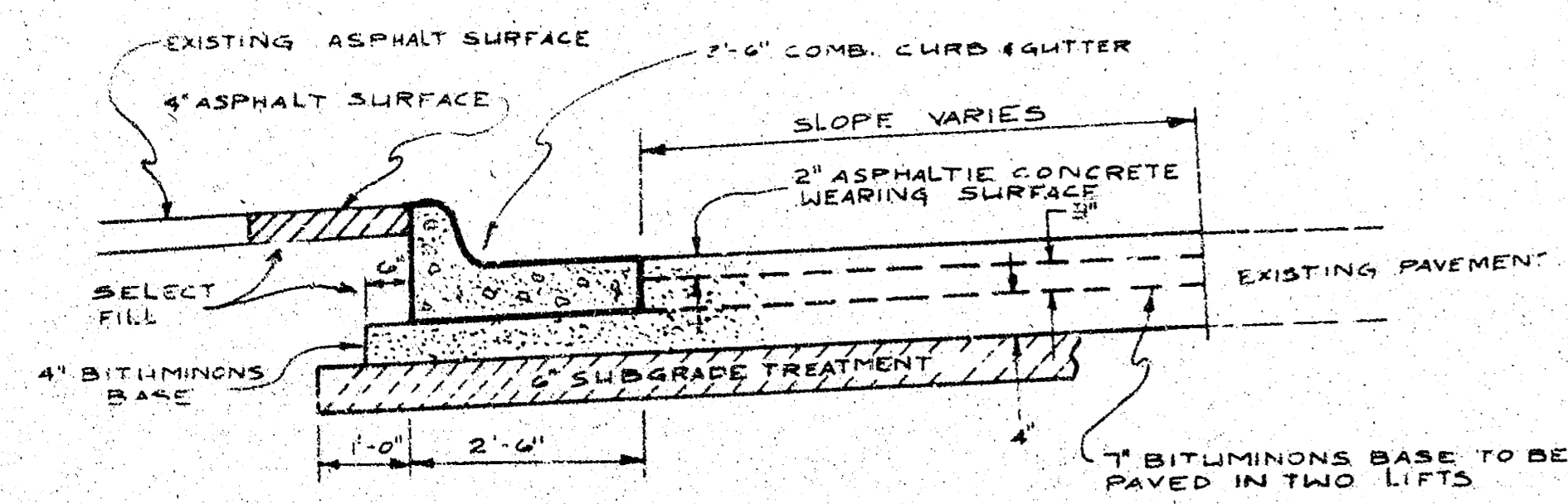
3/6

B FILMED FROM THE BEST AVAILABLE COPY.....

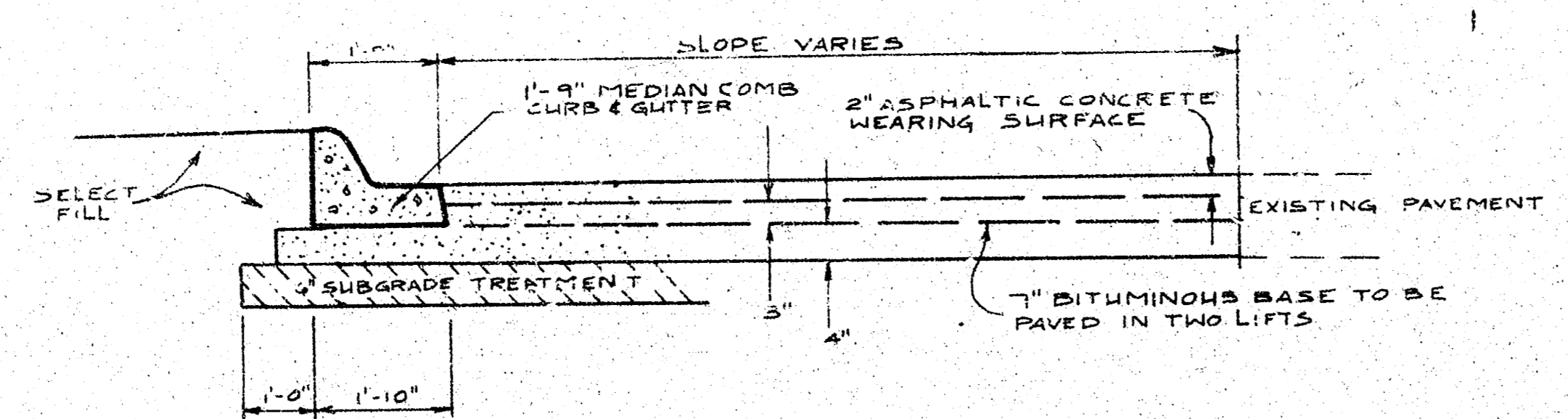


PROJECT NUMBER 472-76-245-80000-001-100-008

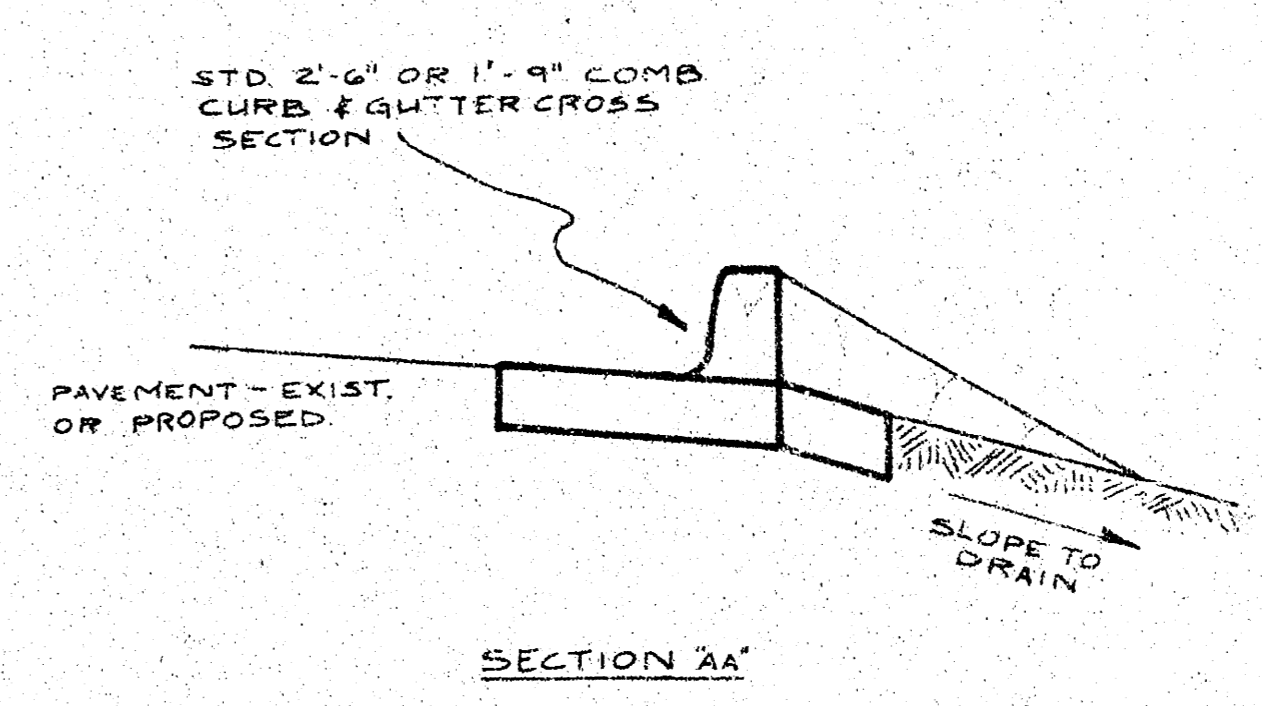
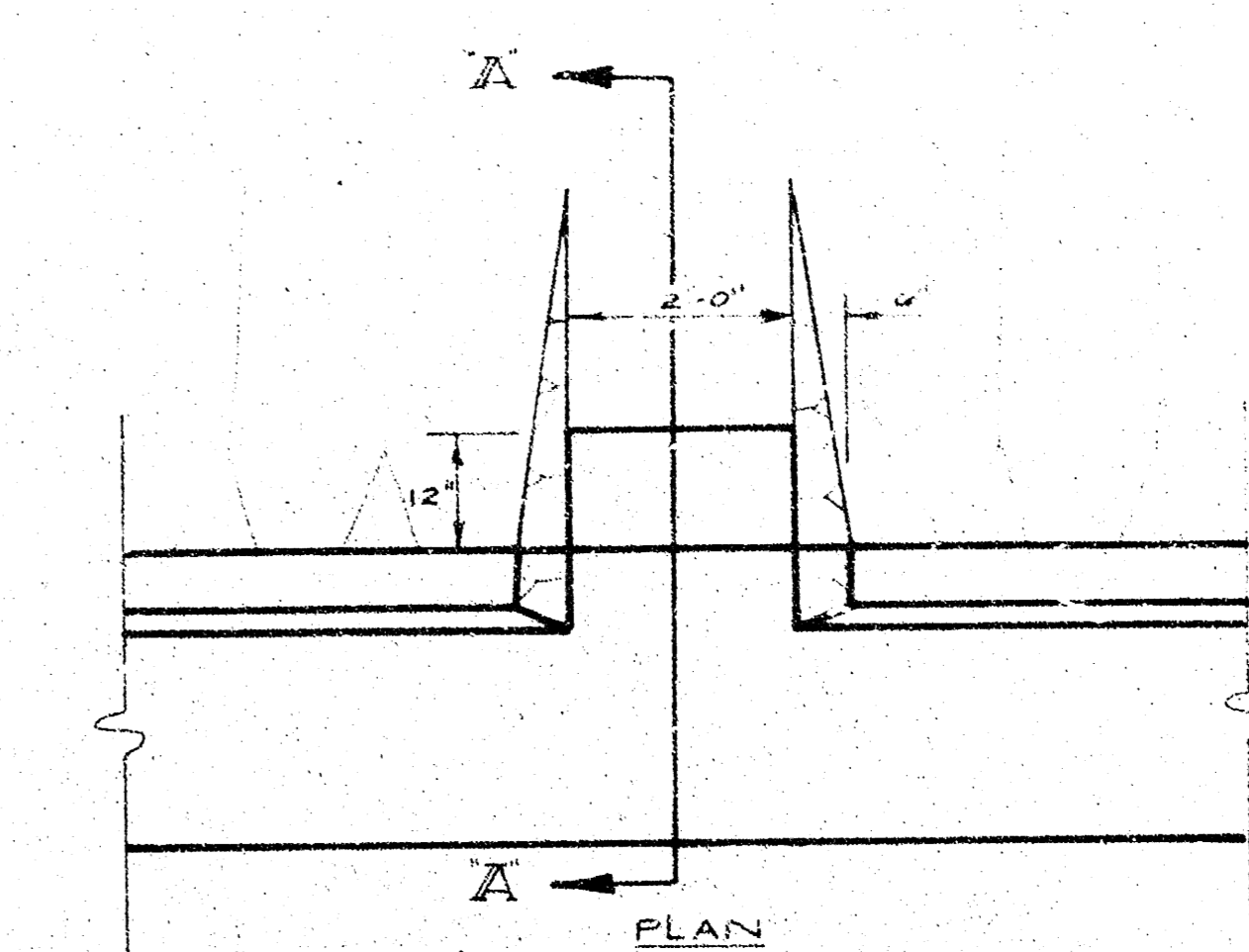
4/6



**TYPICAL SECTION OF WIDENING
ALONG KELLOGG DRIVE**



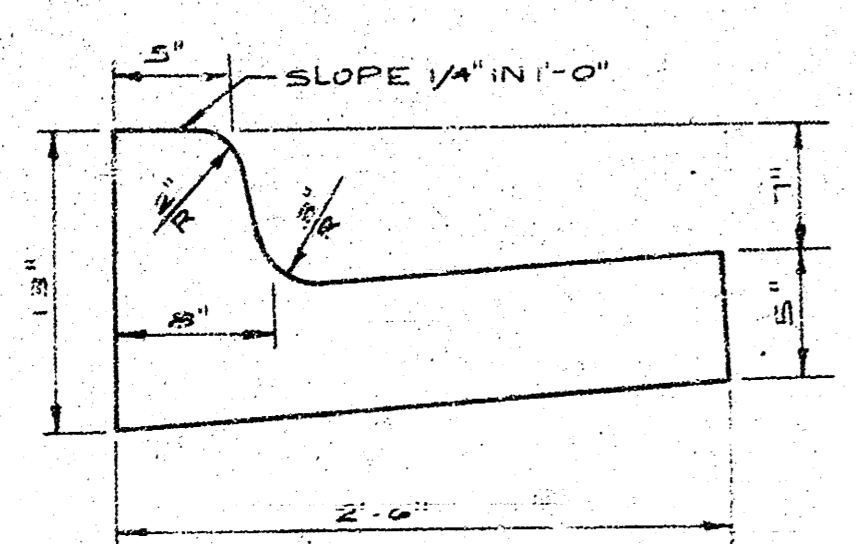
**TYPICAL SECTION OF ADDITIONAL LANE TO
US. 54 HIGHWAY**



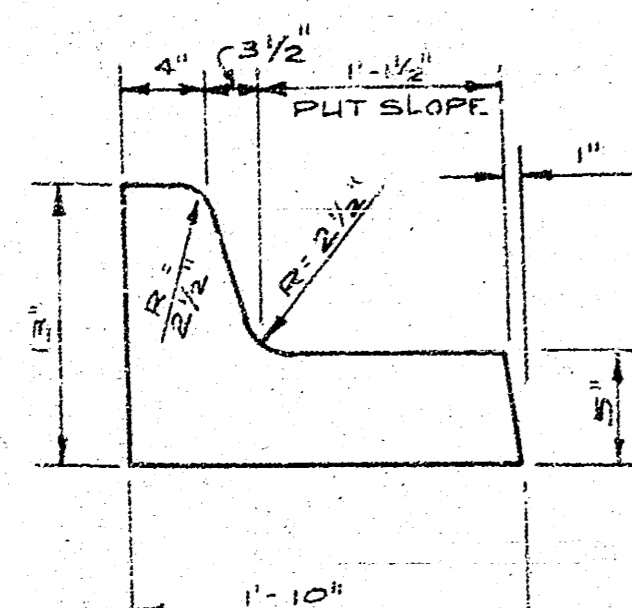
**TYPICAL COMB. CURB & GUTTER
WITH CURB OMITTED**

ASPHALTIC CONCRETE PAVEMENT WITH BITUMINOUS BASE

A TACK COAT OF EMULSIFIED ASPHALT SS1H SHALL BE APPLIED AT AN APPROXIMATE RATE 0.05 GALLONS PER SQ. YD. BETWEEN LIFTS OF ASPHALTIC MATERIALS WHEN ORDERED BY THE ENGINEER. TACK COAT WILL NOT BE PAID FOR DIRECTLY AND SHALL BE CONSIDERED AS SUBSIDIARY TO PRICE BID FOR ASPHALTIC PAVEMENT. BITUMINOUS BASE AND ASPHALTIC CONCRETE WEARING SURFACE SHALL BE PLACED WITH A LAYDOWN MACHINE HAVING AUTOMATIC ELECTRONIC CONTROLS FOR CROWN AND GRADE. CONSTRUCTION JOINTS IN EACH LIFT SHALL BE STAGGERED A MINIMUM DISTANCE OF 12" WITH JOINTS IN PRECEDING LIFTS AND SUCH THAT A JOINT WILL BE CONSTRUCTED ON THE PAVEMENT CENTERLINE IN THE TOP LIFT.



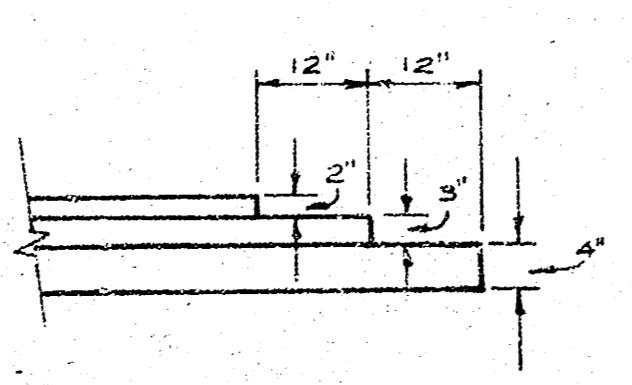
**2'-6"
COMBINED CURB & GUTTER**

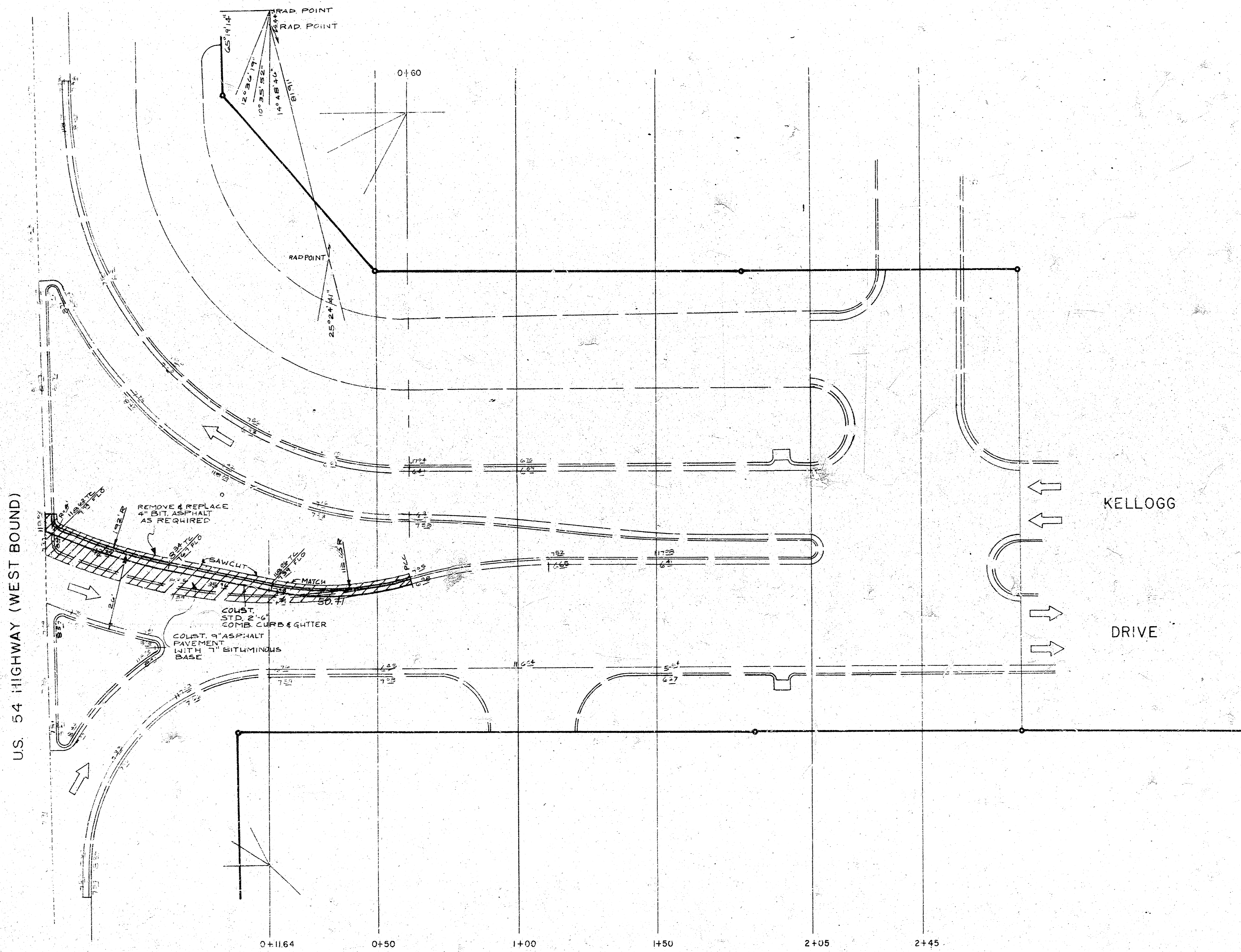



**1'-9"
COMBINED CURB & GUTTER**

DETAIL OF TRANSVERSE CONSTRUCTION JOINTS

TRANSVERSE CONSTRUCTION JOINTS SHALL BE CONSTRUCTED IN FLEXIBLE BASE PAVEMENTS AT LOCATIONS WHERE PAVEMENT TEMPORARILY ENDS TO FACILITATE FUTURE PAVEMENT CONSTRUCTION AS SHOWN BY DETAIL. THE COST OF CONSTRUCTING THE TRANSVERSE CONSTRUCTION JOINTS SHALL NOT BE MEASURED OR PAID FOR DIRECTLY BUT SHALL BE INCLUDED IN THE BID PRICE FOR SQUARE YARDS OF ASPHALTIC CONCRETE PAVEMENT.

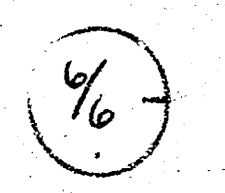






 SCALE: 1"=20'0"

PROJECT NUMBER 472-76-245-80001-000-000-008



FILMED FROM THE BEST AVAILABLE COPY