

# 21st STREET NORTH DECELERATION LANE

130' E. OF FARMSTEAD TO 590' E. OF FARMSTEAD

PROJECT NUMBER  
472-76-245-81384-000-000-001

**GENERAL NOTES**

Contractor shall properly sign and barricade 21st St. No. during construction and shall leave at least one west bound lane of traffic open at all times.

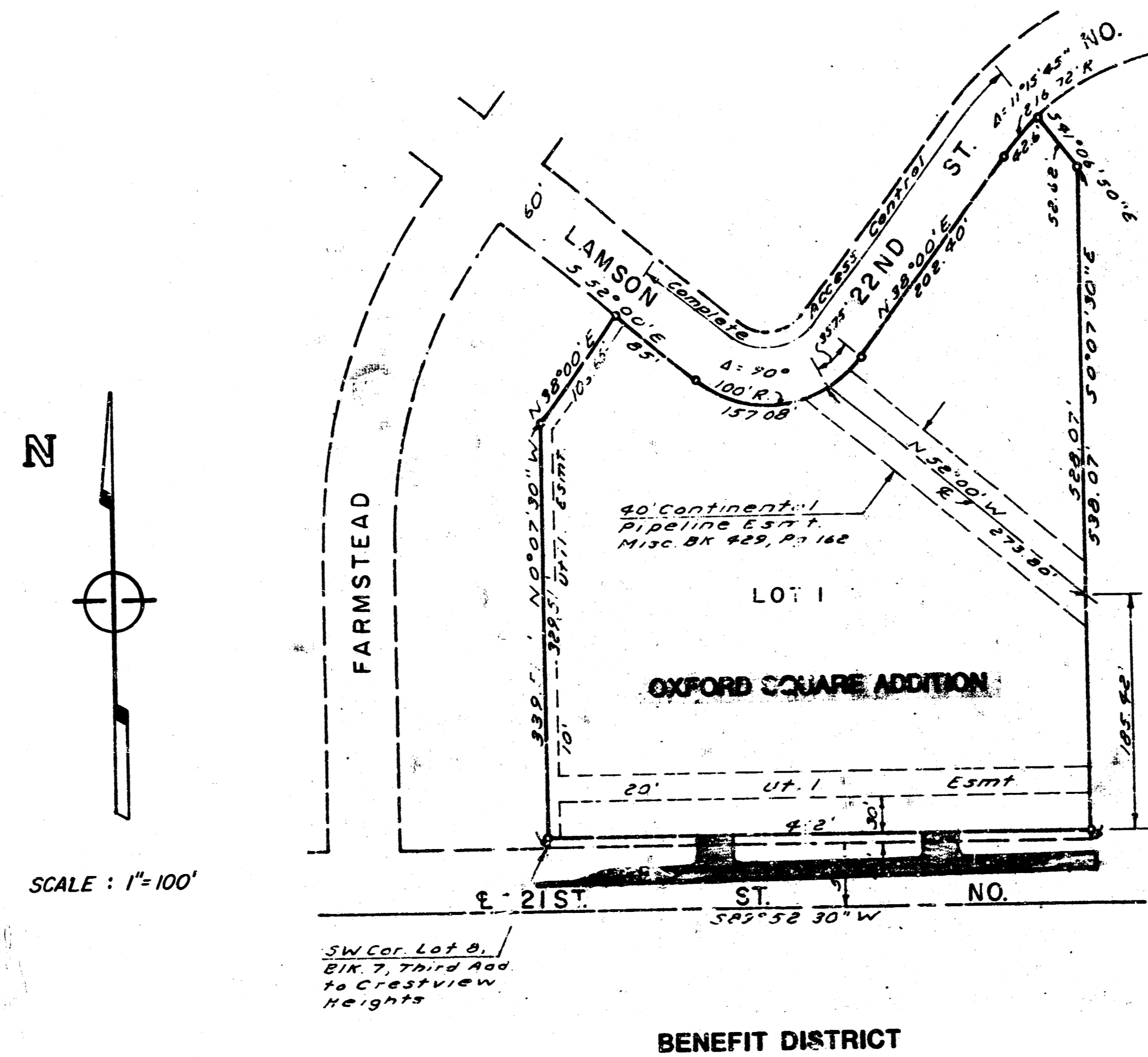
Contractor shall leave one drive approach open to traffic into Oxford Square Addition at all times during construction. Contact Kent Lemon, 684-4100, prior to construction or closing of either of the drives and also to make arrangements for the relocation of the 4 signs within the public RW.

Contractor shall verify the utility lines and make appropriate arrangements with SW Bell and K&E for the relocation or adjustments necessary for their lines and boxes.

Saw joint shall be used at all locations necessary or as examined by the Engineer and shall be considered as incidental to the bid item for Pavement and Curb and Gutter Removal.

The No. 5 drilled and grouted bars shall be constructed at all locations necessary where new pavement joins existing concrete base unless the Engineer determines that sufficient tie bars exist within the base to tie the new pavement to. The cost of the drilled and grouted tie bars shall be considered as incidental to the bid item for 2" A.C. Pavement with 6" Concrete Base.

The contractor shall contact Kent Lemon, 684-4100, for the exact location and verification of the 30' driveways prior to construction.



**CITY OF WICHITA, KS**  
**MICHAEL E. LINDEBAK CITY ENGINEER**

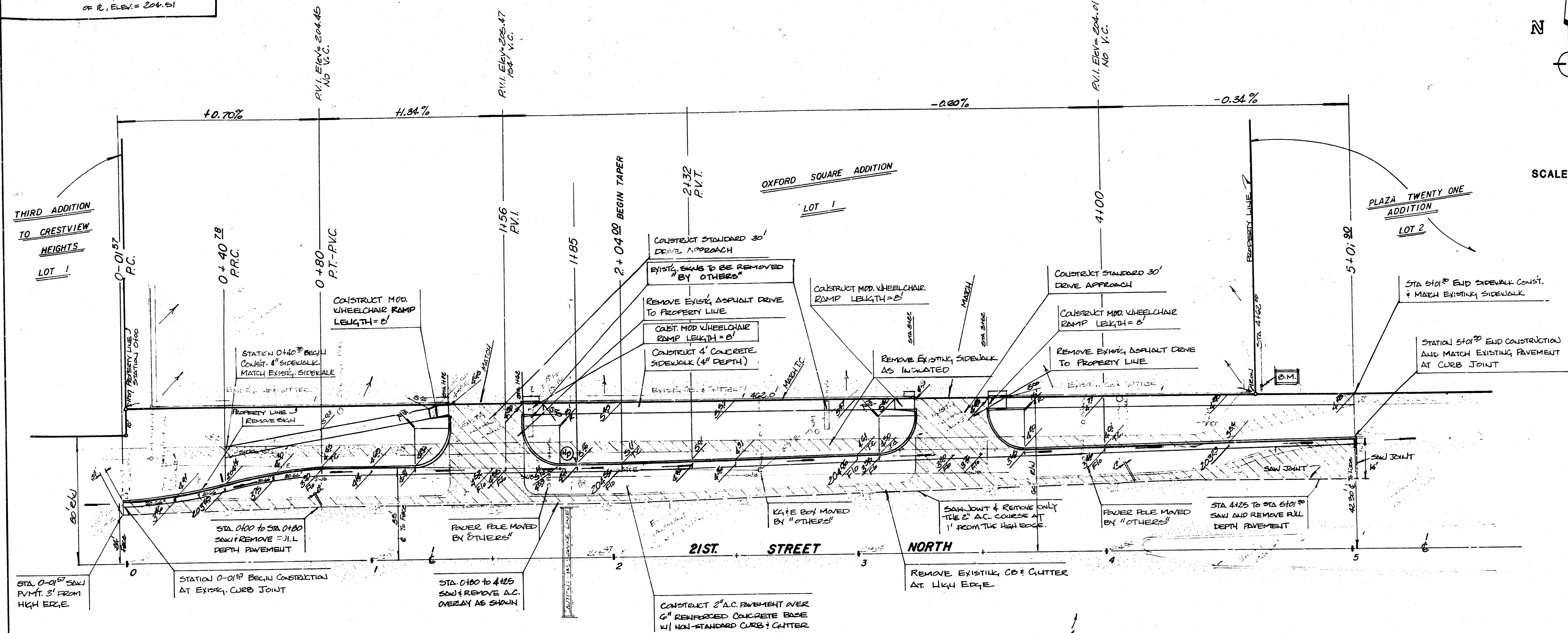
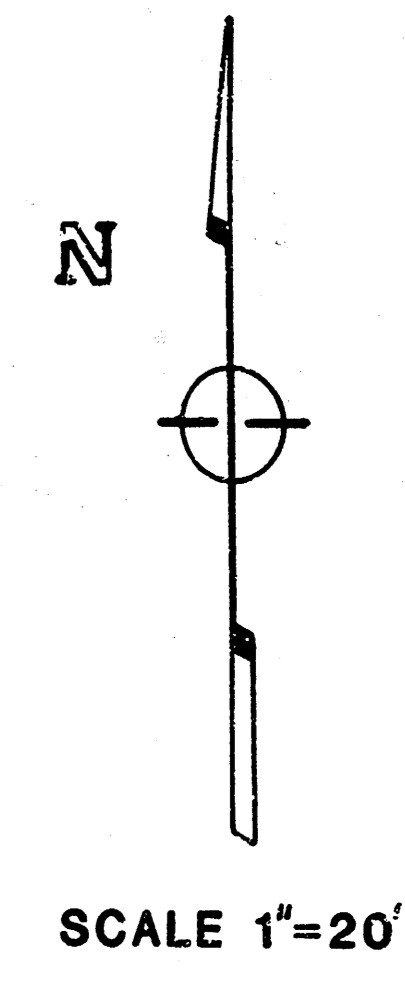


BENCH MARK - '□' curb in top of curb at the parking lot pavement at Sta. 4+64, 2' north of H.L. 21st St. No. Elev. = 204.51

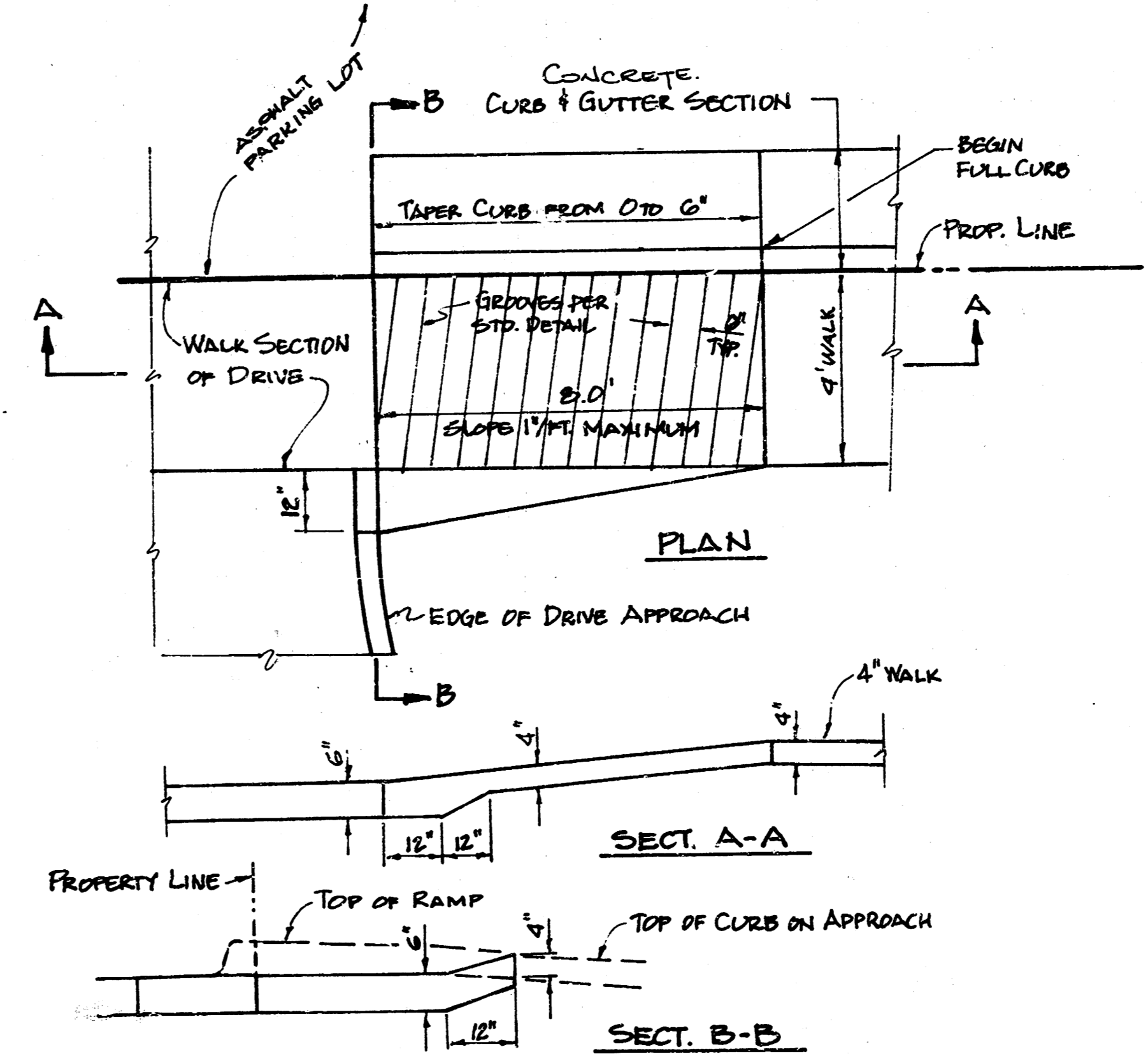
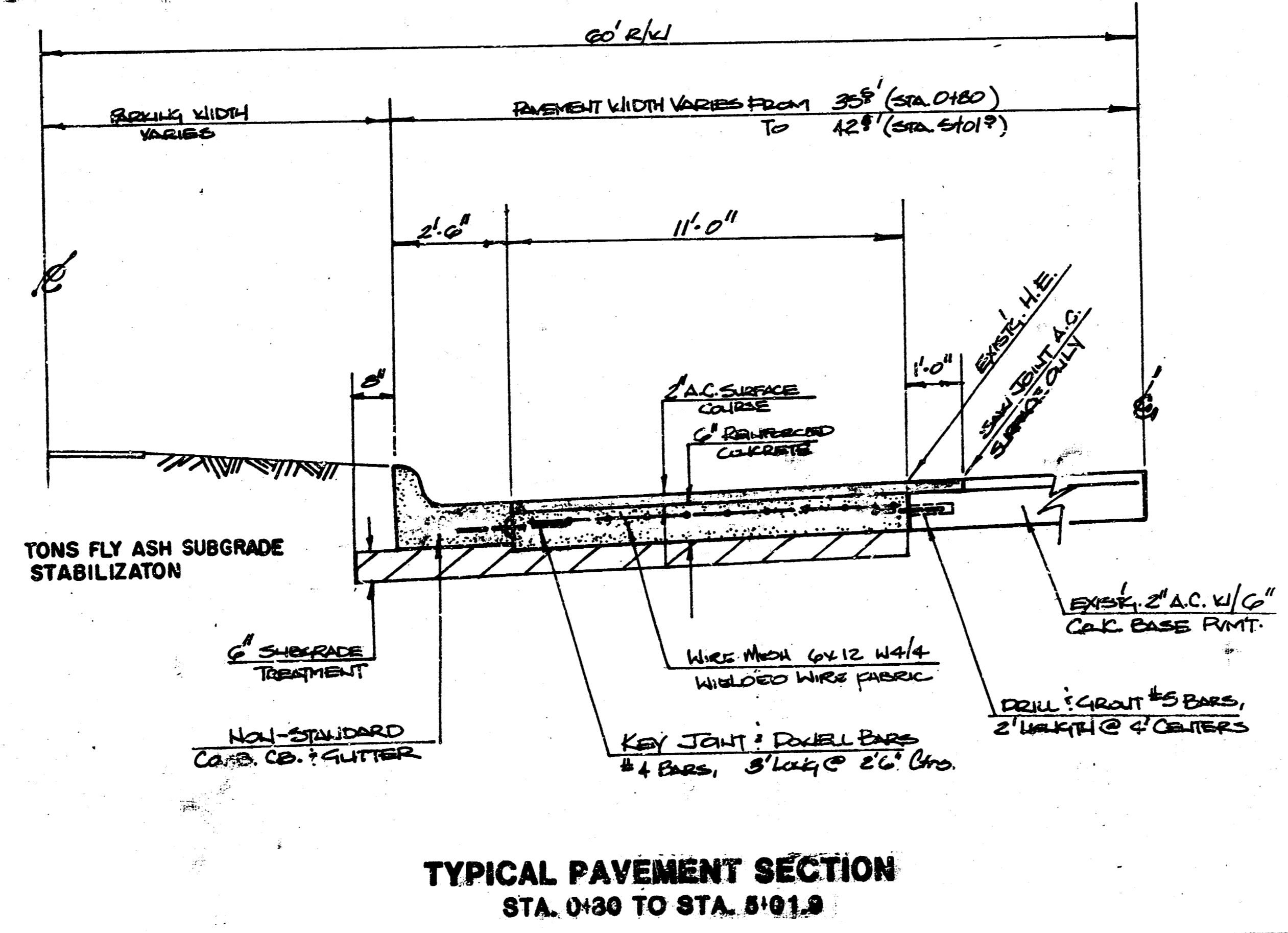
**BAUGHMAN COMPANY, P.A.**  
SURVEYING & ENGINEERING  
316-262-7271 • 330 LAURA • WICHITA, KANSAS 67211

FILMED FROM THE BEST  
AVAILABLE COPY

BENCH MARK: 11" CUT IN TOP OF CURB AT  
 PAVEMENT, STA. 4104, 2' LEFT  
 OF R., ELEV. = 204.51



**REVERSE CURVE DATA**  
 RADII = 153.97 FT  
 $\Delta = 15^\circ 22' 30''$   
 L.C. = 41.19'  
 TAN = 20.76'

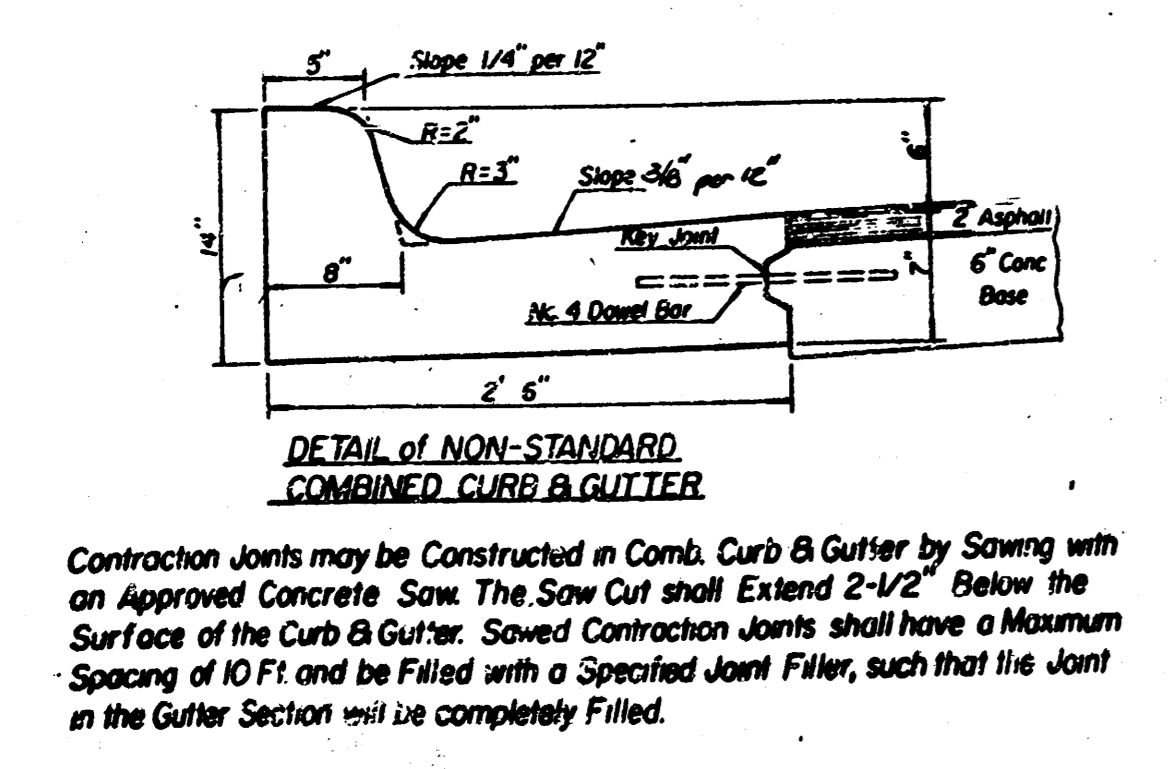


NOTE: THE LUMP SUM BID ITEM FOR EACH MODIFIED WHEELCHAIR RAMP SHALL INCLUDE ALL WORK NECESSARY FOR SAW JOINT & REMOVAL OF EXISTING PAVEMENT BEHIND THE PROPERTY LINE AND THE REPLACEMENT WITH EITHER TAPERED CURB & GUTTER OR ASPHALT PAVEMENT TO PROVIDE A GOOD FINISHED APPROACH.

**MODIFIED WHEELCHAIR RAMP DETAIL**

EARTHWORK QUANTITIES	
EXCAVATION = 424.72 C.Y.	COMPACTED FILL = 46.63 C.Y.
+ 10 % = 42.47 C.Y.	+ 10 % = 4.56 C.Y.
TOTAL = 467.19 C.Y.	TOTAL = 51.19 C.Y.

SUBGRADE MANIPULATION  
 TOTAL = 762 S.Y.



CONSTRUCTION JOINTS MAY BE CONSTRUCTED IN COMB. CURB & GUTTER BY SAWING WITH AN APPROVED CONCRETE SAW. THE SAW CUT SHALL EXTEND 2-1/2\"/>

**TYPICAL PAVEMENT SECTION**  
 STA. 0+30 TO STA. 5+01.9

**21ST ST. DECELERATION LANE**  
 FROM 130' E. OF FARMSTEAD  
 TO 590' EAST OF FARMSTEAD  
**CITY OF WICHITA, KS**  
 PROJ. NO. 472-76-245-81384-000-000-001

**BAUGHMAN COMPANY, P.A.**  
 SURVEYING & ENGINEERING  
 316262-7271 • 330 LAURA • WICHITA, KANSAS 67211

FILMED FROM THE BEST AVAILABLE COPY

