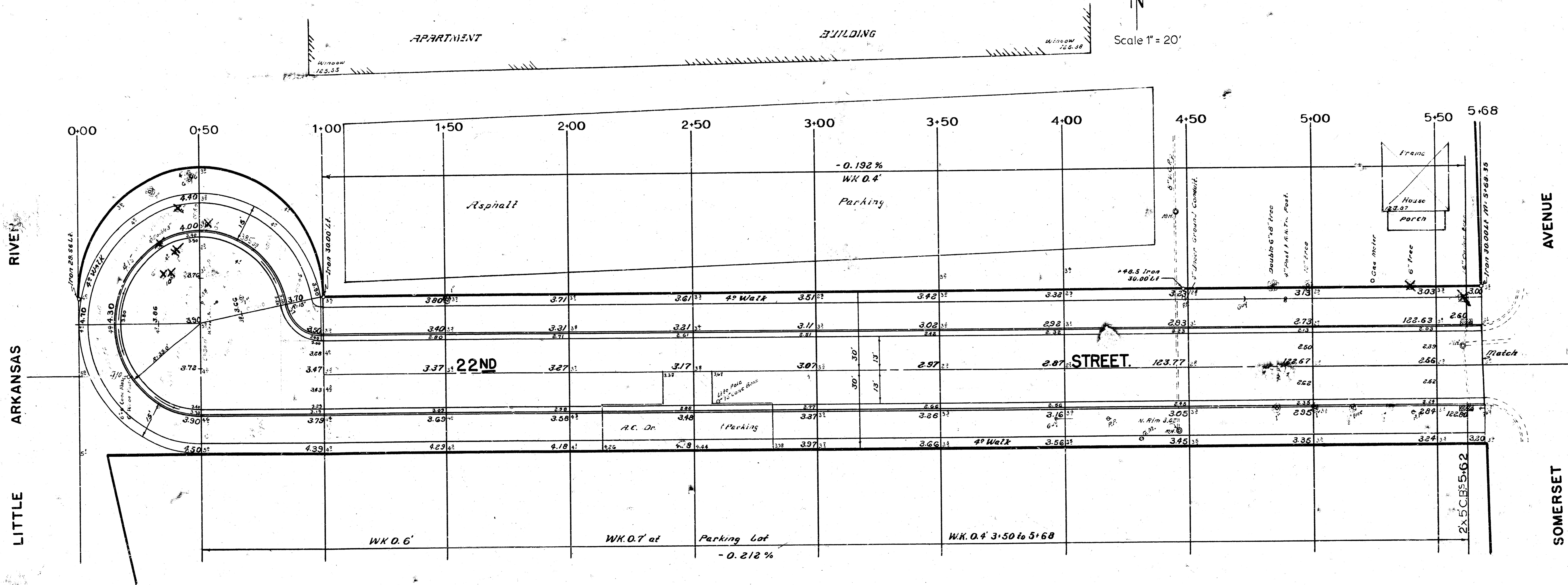


Base Line is on center line.

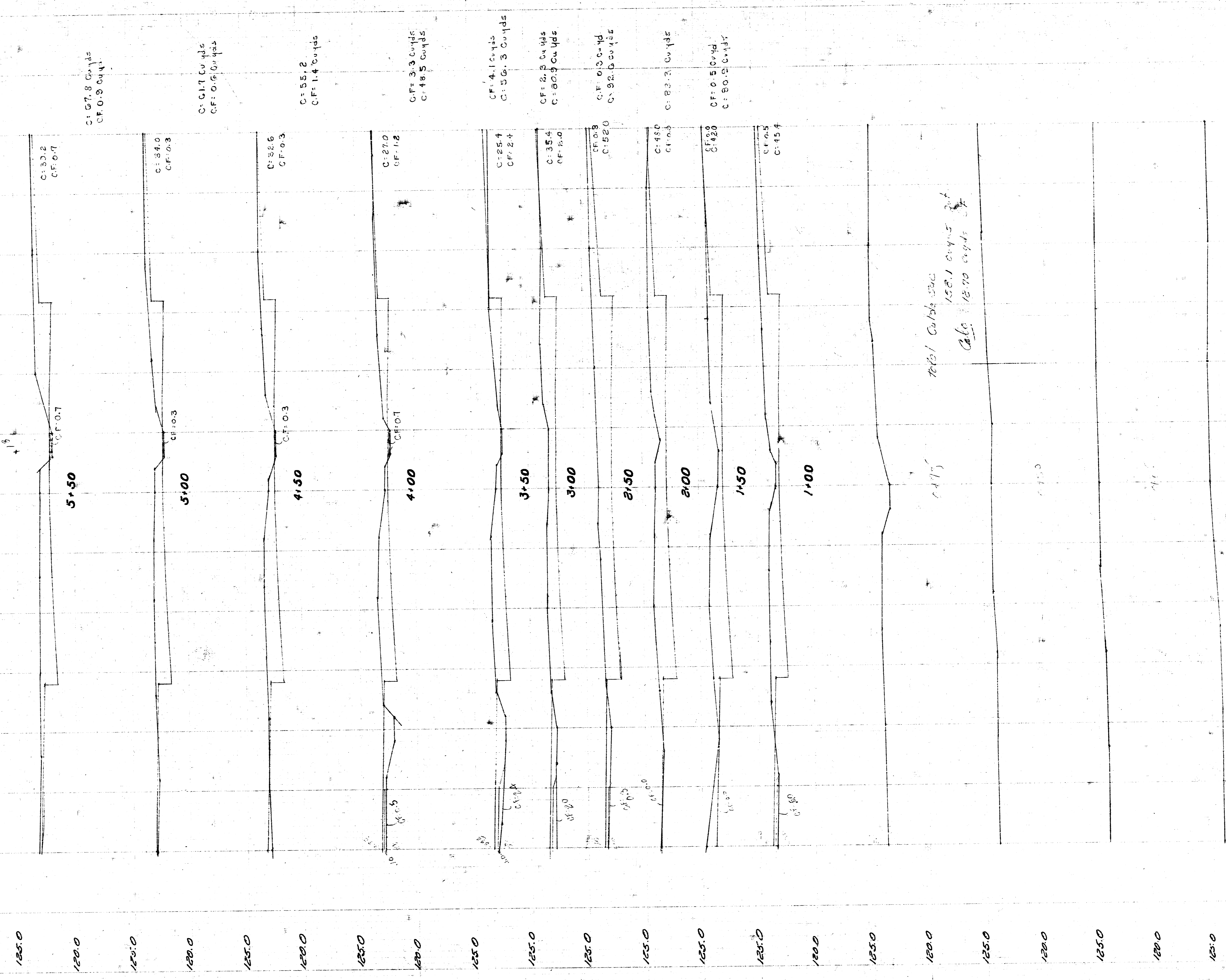
B.M. 127.46 Chisled Top Conc Base for Light Pole 70' E. End Little Arkansas Bridge on 21<sup>st</sup> ST.  
 B.M. 123.30 R.R. Spike W Side P Pole on N.W. Cor Somerset & 22<sup>nd</sup> ST. West.

Scale 1" = 20'



PROPERTY EXCAVATION		COMP FILL	
1137	80.6 Cu Yds	26.30	Cu Yds
+10%	80.5 "	+10%	2.60 "
<b>Total</b>	<b>885.1 Cu Yds</b>	<b>Total</b>	<b>28.90 Cu Yds</b>

**22ND STREET**  
 W.L. Somerset to and incl Cul-de-sac  
**26'-2'-30' ASPHALTIC - CON**  
 City of Wichita, Kansas  
 B.E. Smith City Engineer  
 Date June 1966 Proj No. C16-2



C: 13.6  
CF: 0.0

C: 13.6  
CF: 0.0

C: 17.8  
CF: 0.3

C: 17.8  
CF: 0.3

C: 17.8  
CF: 0.3

C: 17.7  
CF: 0.6

C: 17.7  
CF: 0.6

C: 17.7  
CF: 0.6

C: 15.5  
CF: 1.4

C: 15.5  
CF: 1.4

C: 15.5  
CF: 1.4

C: 18.3  
CF: 3.3

C: 18.3  
CF: 3.3

C: 18.3  
CF: 3.3

C: 14.1  
CF: 5.3

C: 14.1  
CF: 5.3

C: 14.1  
CF: 5.3

C: 2.9  
CF: 8.3

C: 2.9  
CF: 8.3

C: 2.9  
CF: 8.3

C: 0.3  
CF: 9.2

C: 0.3  
CF: 9.2

C: 0.3  
CF: 9.2

C: 8.3  
CF: 0.3

C: 8.3  
CF: 0.3

C: 8.3  
CF: 0.3

C: 0.5  
CF: 9.0

C: 0.5  
CF: 9.0

C: 0.5  
CF: 9.0

C: 0.5  
CF: 9.0

C: 0.5  
CF: 9.0

C: 0.5  
CF: 9.0

Total Cu/14.53C  
152.1 cu yds  
Calc. 12.70 cu yds