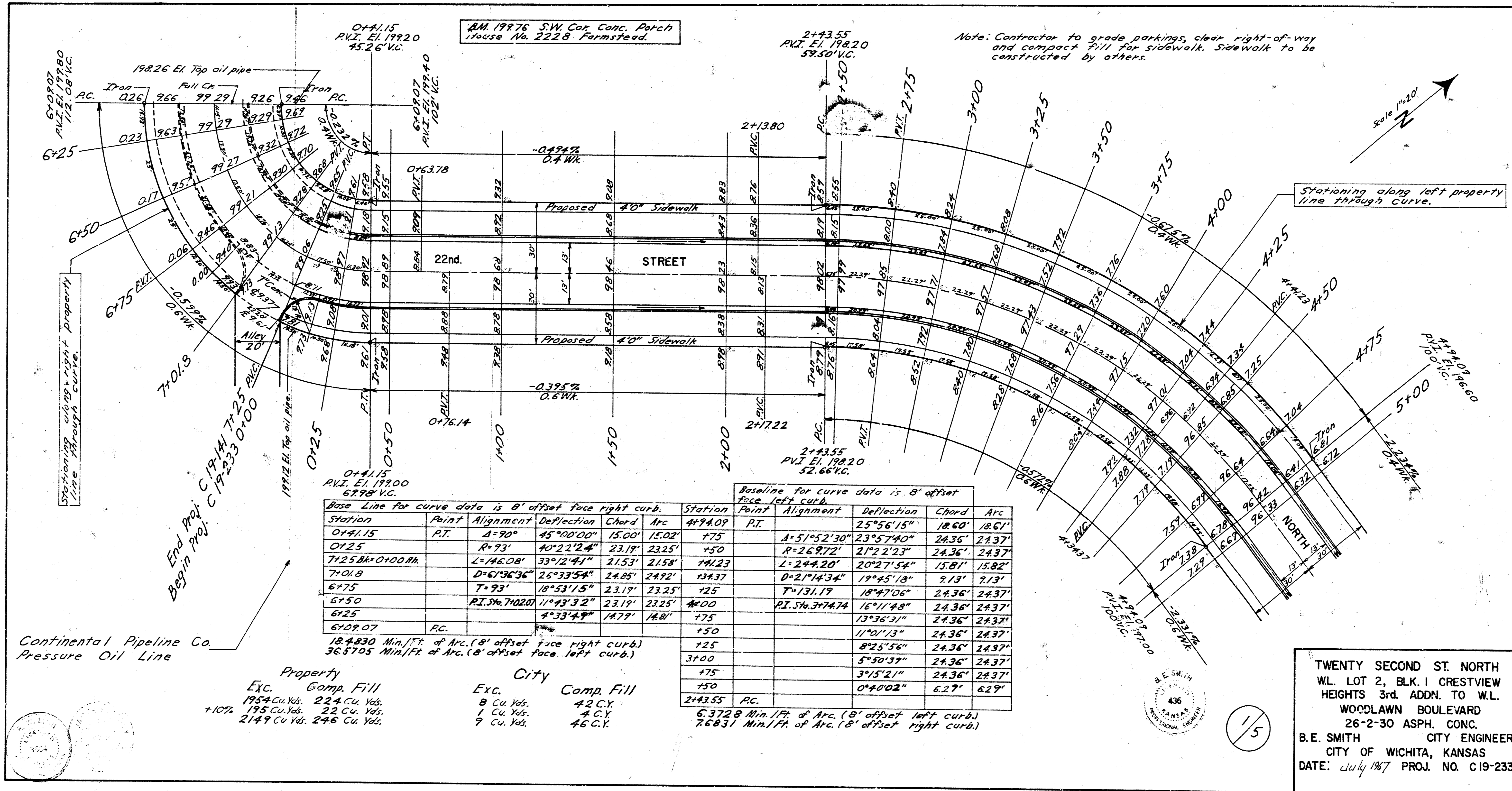


Surveyor
 Plan
 Checked
 1987



Baseline for curve data is 8' offset face left curb.

Station	Point	Alignment	Deflection	Chord	Arc	Station	Point	Alignment	Deflection	Chord	Arc
0+41.15	P.T.	A=90°	45°00'00"	15.00'	15.02'	4+94.09	P.T.	A=51°52'30"	25°56'15"	18.60'	18.61'
0+72.5		R=73'	40°22'24"	23.19'	23.25'	+50		R=264.72'	21°22'23"	24.36'	24.37'
7+25	Blk+0+00	L=146.08'	33°12'41"	21.53'	21.58'	1+123		L=244.20'	20°27'54"	15.81'	15.82'
7+01.8		D=61°36'36"	26°33'54"	24.85'	24.92'	1+347		D=21°14'34"	19°45'18"	9.13'	9.13'
6+75		T=93'	18°53'15"	23.19'	23.25'	+25		T=131.19'	18°47'06"	24.36'	24.37'
6+50		P.I. Sta. 7+02.00'	11°43'32"	23.19'	23.25'	4+00		P.I. Sta. 3+74.74'	16°11'48"	24.36'	24.37'
6+25			4°33'49"	14.79'	14.81'	+75			13°36'31"	24.36'	24.37'
6+07.07	R.C.					+50			11°01'13"	24.36'	24.37'
						+25			8°25'56"	24.36'	24.37'
						3+00			5°50'39"	24.36'	24.37'
						+75			3°15'21"	24.36'	24.37'
						+50			0°40'02"	6.27'	6.27'
						2+43.55	R.C.				

184.830 Min./ft. of Arc. (8' offset face right curb.)
 36.5705 Min./ft. of Arc. (8' offset face left curb.)
 6.3728 Min./ft. of Arc. (8' offset left curb.)
 26.831 Min./ft. of Arc. (8' offset right curb.)

Continental Pipeline Co.
 Pressure Oil Line

Property
 Exc. Comp. Fill
 1954 Cu. Yds. 224 Cu. Yds.
 195 Cu. Yds. 22 Cu. Yds.
 +107 2149 Cu. Yds. 246 Cu. Yds.

City
 Exc. Comp. Fill
 8 Cu. Yds. 42 C.Y.
 1 Cu. Yds. 4 C.Y.
 9 Cu. Yds. 46 C.Y.

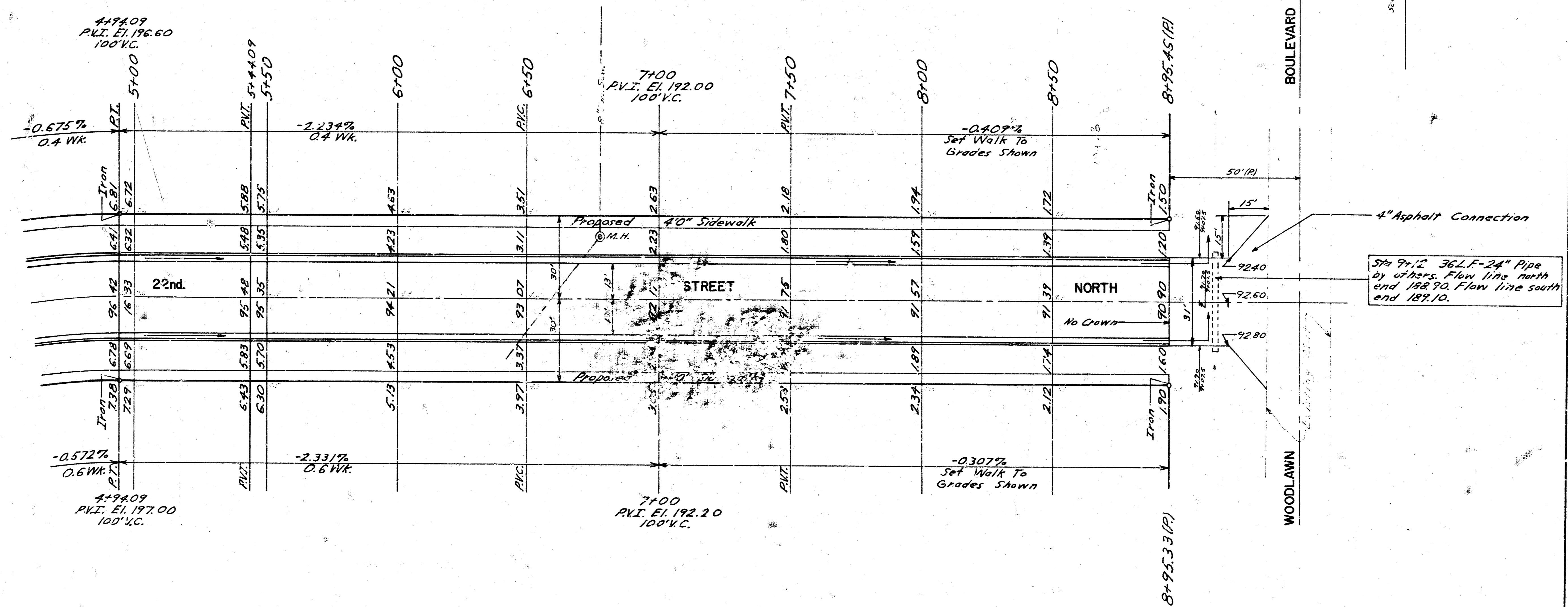
TWENTY SECOND ST. NORTH
 W.L. LOT 2, BLK. I CRESTVIEW
 HEIGHTS 3rd ADDN. TO W.L.
 WOODLAWN BOULEVARD
 26-2-30 ASPH. CONC.
 B.E. SMITH CITY ENGINEER
 CITY OF WICHITA, KANSAS
 DATE: July 1987 PROJ. NO. C19-233



15

B.M. 19375 S.W. Cor. Conc. Porch
House No. 2228 Formstead

Note: Contractor to grade parkings, clear right-of-way
and compact fill for sidewalk. Sidewalk to be
constructed by others.



2/3

TWENTY SECOND STREET NORTH PROJ. NO. C 19-233
W.L. LOT 2, BLK. I CRESTVIEW HEIGHTS 3rd. ADDN.
TO W.L. WOODLAWN BOULEVARD

Scale 1"=20'