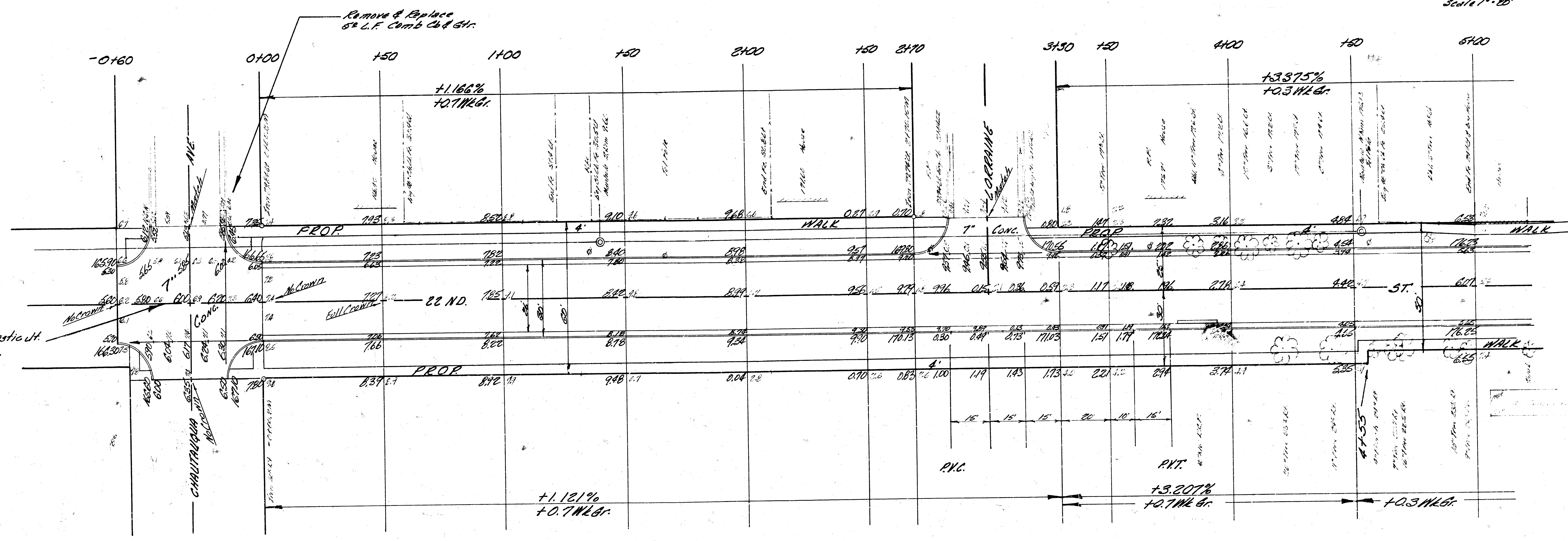
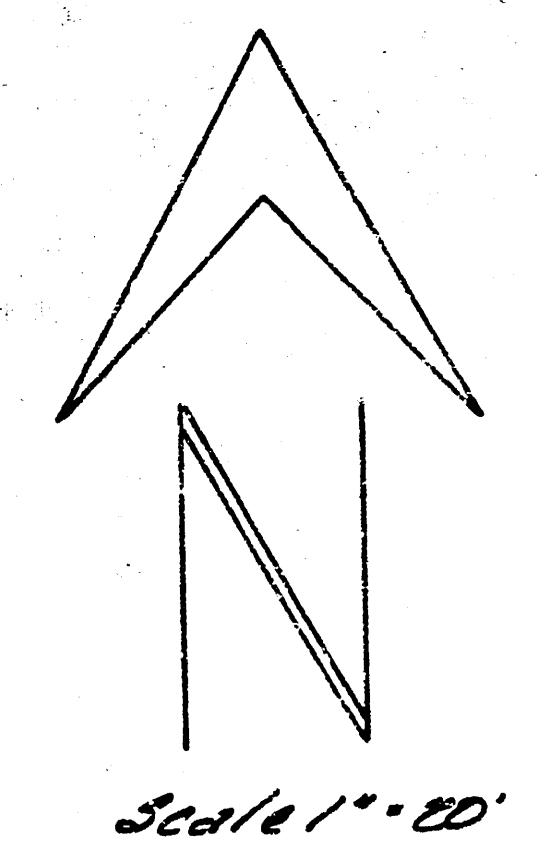


B.M. 167.81 S.E. Cor. Conc. Porch Ho. No. 2301 Chautauqua  
 B.M. 170.01 "X" Cut Top W. Cb. Lorraine 10' N of N.L. 22nd.

NOTE TO FIELD ENGR. & CONTRACTOR  
 Grade Parkings & Clear Right of Way  
 for Prop. Sidewalk. Sidewalk to be  
 constructed by others.



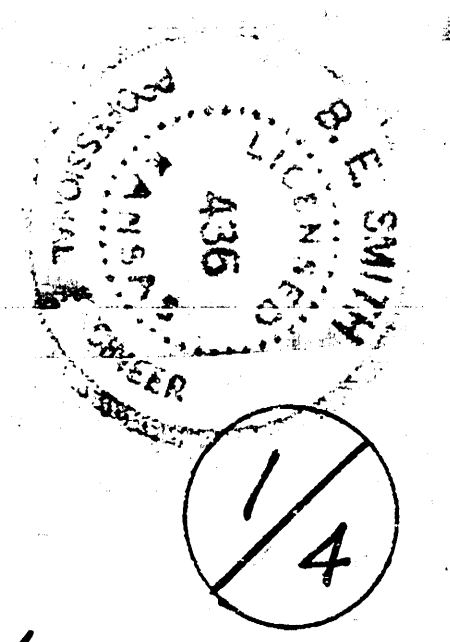
Baseline - @ 22nd St.

NOTE TO FIELD ENGR.  
 From Sta 3130 Pnt shall  
 be constructed to match exist.  
 return @ Hillside for alignment.

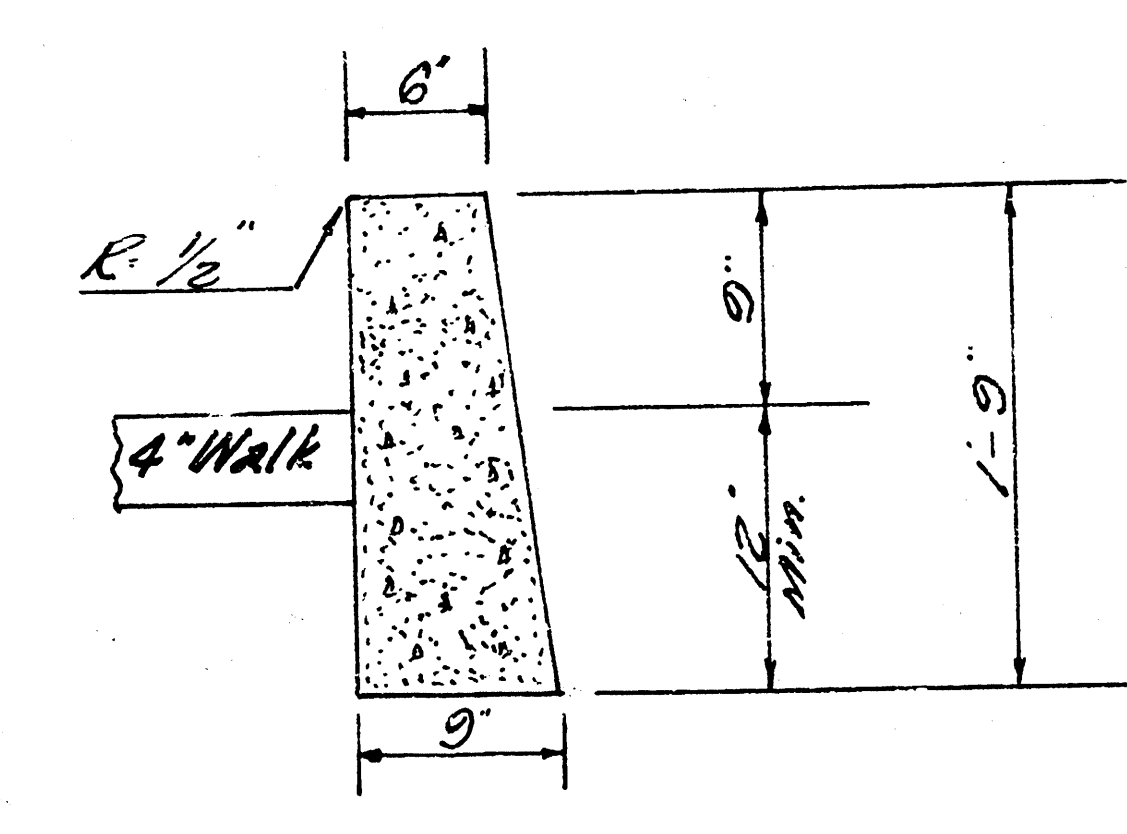
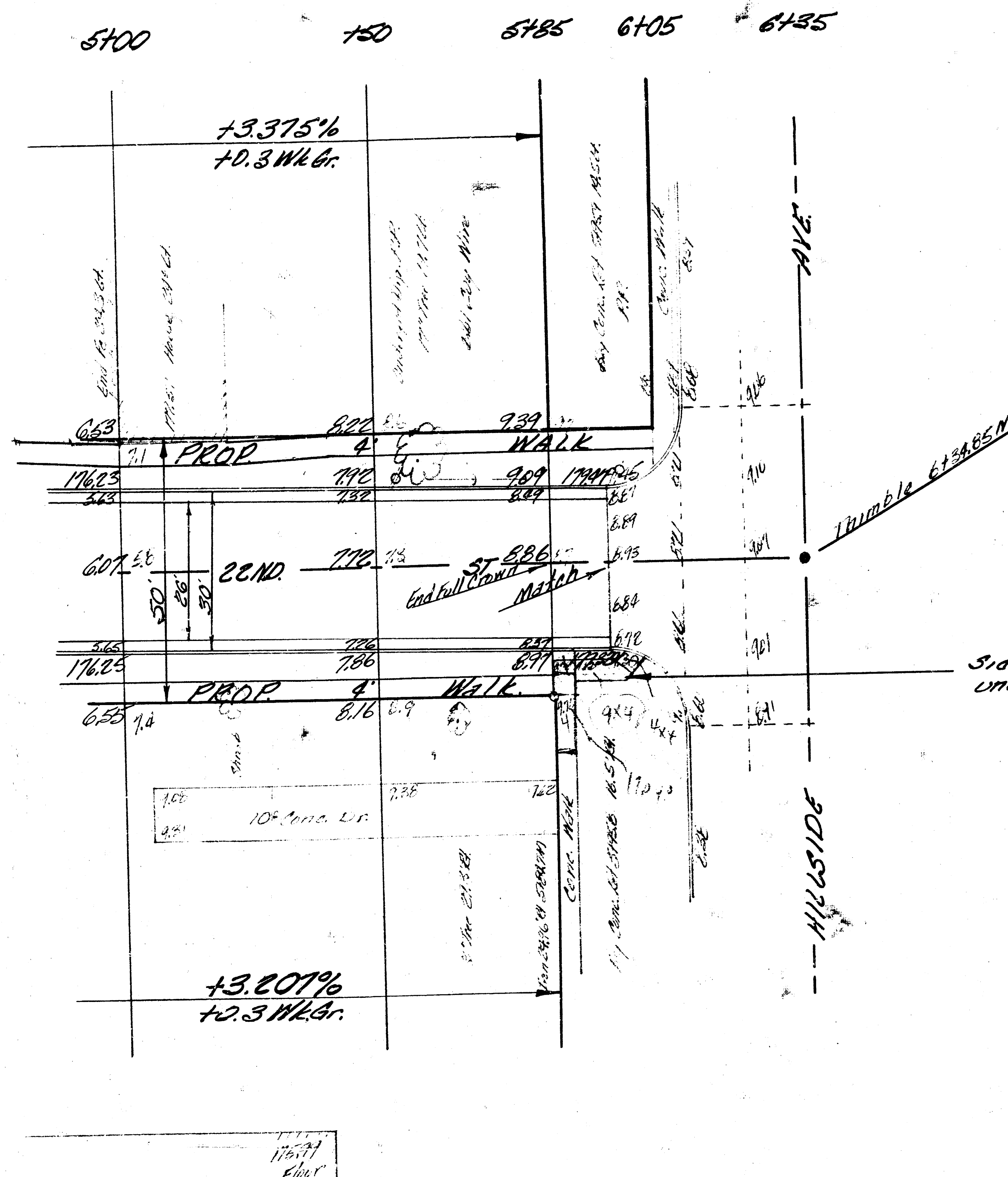
EXCAVATION	
PROP	CY
1642.6	257.4CY
164.3	25.7 40%
1806.9	283.1 CY Total

COMP. FILL	
PROP	CY
2.6	2.6 CY
2.3	2.3 40%
2.9	2.9 CY Total

22 ND ST.  
 W.L. CHAUTAUQUA TO W.L. HILLSIDE  
 26' - 2" - 30' AC.  
 CITY OF WICHITA, KANSAS  
 B.E. SMITH CITY ENGINEER  
 DATE JUNE 1966 PROJ. C 16-18



B.M 179.27 "Cut Top Ch. str. Radius S.W. Cor 22nd & Hillside



TYPE "B"  
Retaining Wall

Baseline = 22ND