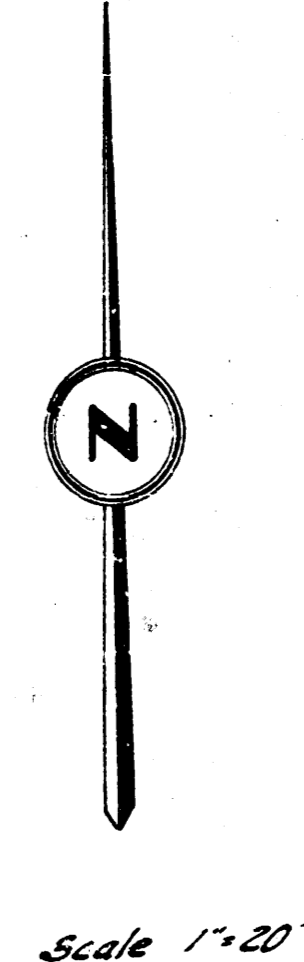
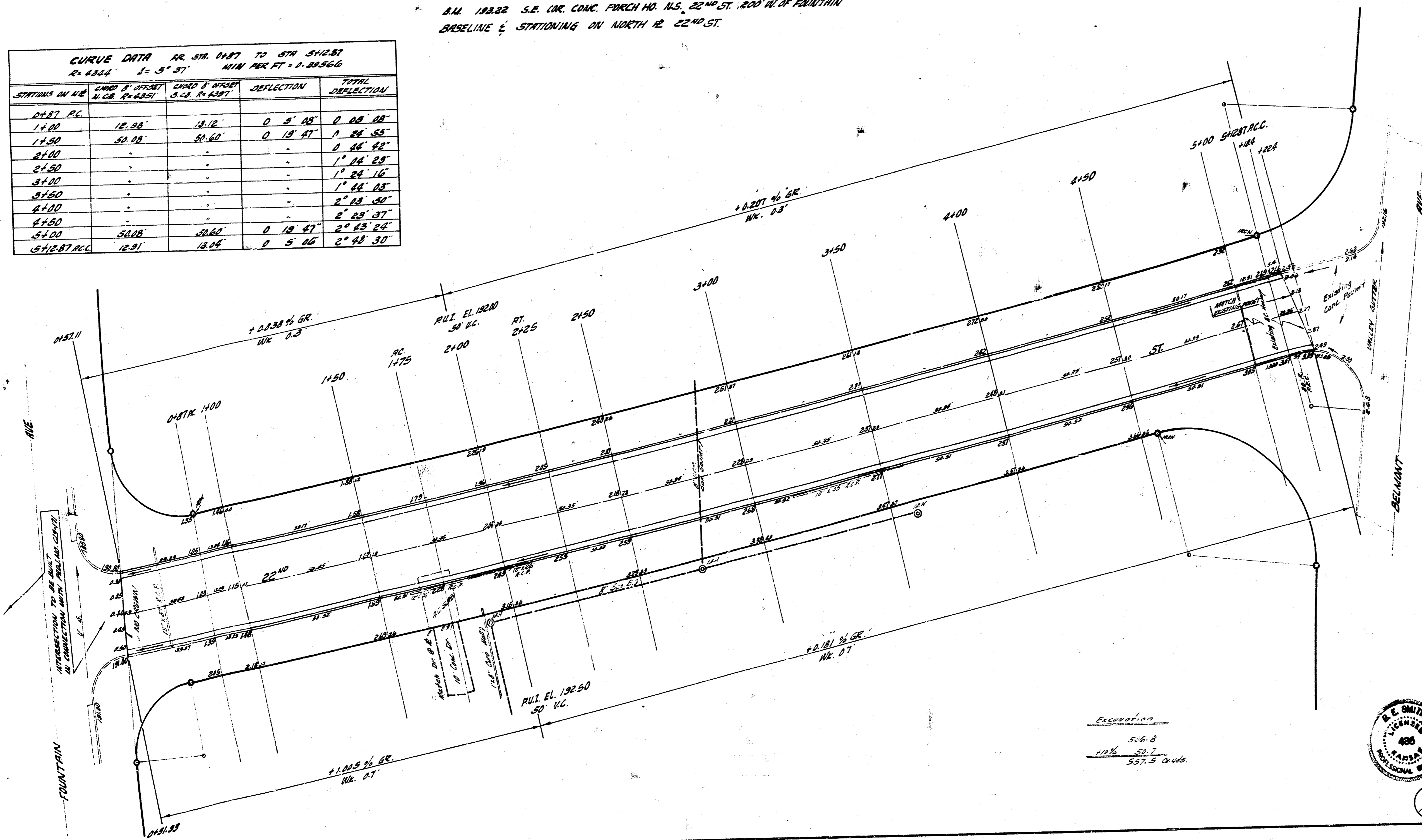


R.M. 19.822 S.E. COR. CONC. PARCH NO. 15, 22ND ST. 200' W. OF FOUNTAIN
 BASELINE & STATIONING ON NORTH 12 22ND ST.

CURVE DATA RR. STA. 1187 TO STA. 512.81				
R = 4344 I = 5° 37' MIN PER FT = 1.89566				
STATIONING ON R.C.	CHORD B. POINTS N.C.B. P. 4321	CHORD B. POINTS S.C.B. P. 4327	DEFLECTION	TOTAL DEFLECTION
0+27 P.C.				
1+00	12.98'	18.12'	0° 5' 08"	0° 08' 08"
1+50	30.00'	31.60'	0° 19' 47"	1° 27' 55"
2+00				0° 46' 52"
2+50				1° 44' 23"
3+00				1° 44' 16"
3+50				1° 44' 08"
4+00				2° 43' 50"
4+50				2° 43' 37"
5+00	34.08'	30.60'	0° 19' 47"	2° 43' 24"
5+27 P.T.C.	12.91'	18.04'	0° 5' 08"	2° 43' 30"

Surveyed by
 P. H. Smith
 E. C. Smith
 Checked by
 P. H. Smith



22ND ST.
 E.L. FOUNTAIN TO W.L. BELMONT
 26° - 2' - 30" A.C.
 CITY OF WICHITA KANSAS
 B.E. SMITH CITY ENGINEER
 DATE APRIL 1960. PROJ. NO. C13-183



1/2

Excavation
 514.8
 112.7
 537.5 cu yd.