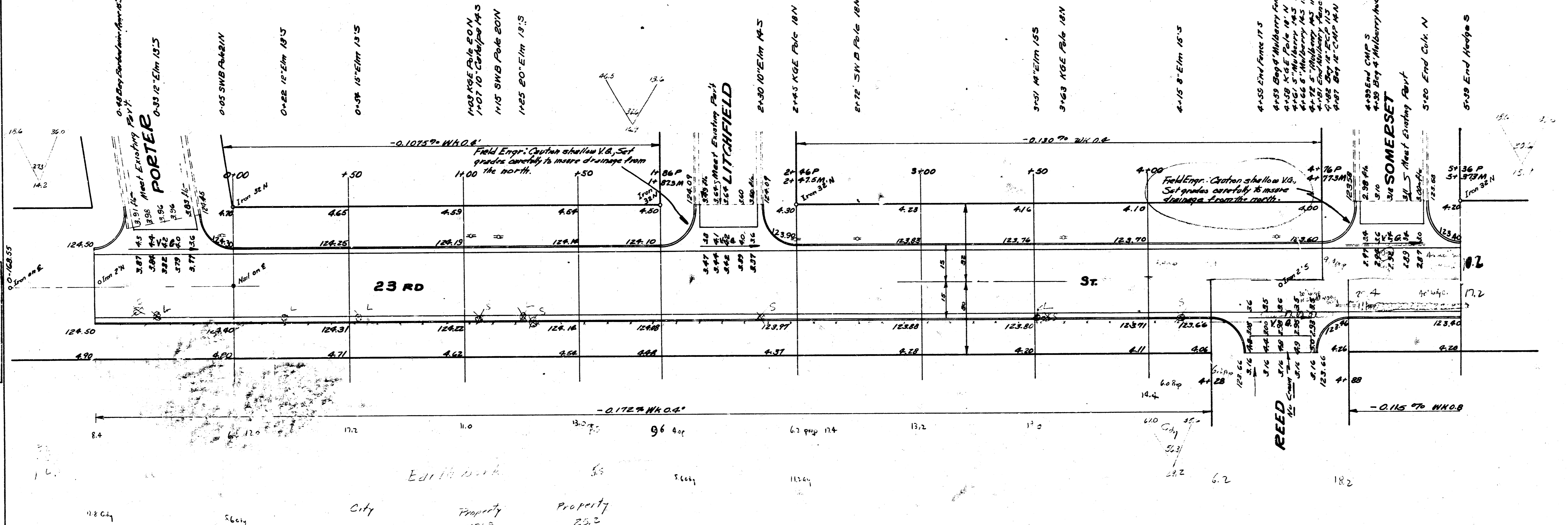
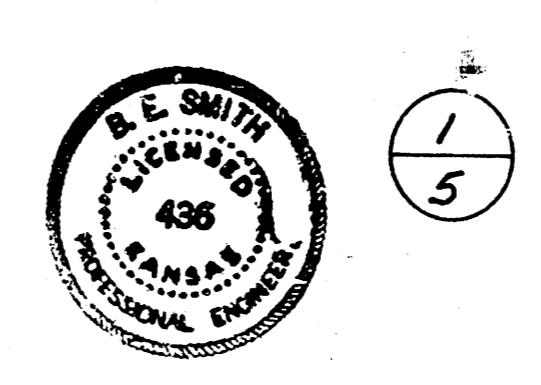


B.M. 126.88 S.W. Cor. Conc. Pav. No. 2502 Somerset  
 B.M. 125.69 S.E. Cor. Conc. Pav. No. 2501 NW Hood # 2320  
 C.M. 125.85 S.W. Cor. Conc. Pav. No. 2500 NE Garland # 2320  
 B.M. 123.19 1/2" in E of Pit in E of Garland, N.L. 2320  
 B.M. 126.43 S.E. Cor. Conc. Pav. No. 2507 Somerset  
 B.M. 123.58 "R" in Pit in W of Somerset, N.L. 2320  
 B.M. 124.09 "R" in Pit in W of Litchfield, N.L. 2320  
 B.M. 124.46 "X" in E of Porter 10' N of N.L. 2320



Surveyed by  
 Checked by  
 B.S. 1/25/54

City	Property	Property
428.7	1171.3	25.2
42.9	1172.2	4000 6.5
771.6	128.1	27.7



23 RD  
 WL PORTER TO EL HOOD  
 26-2-30 A.C.  
 CITY OF WICHITA  
 BESMITH CITY ENGINEER  
 Feb. 1954 Proj. No. C13-130

