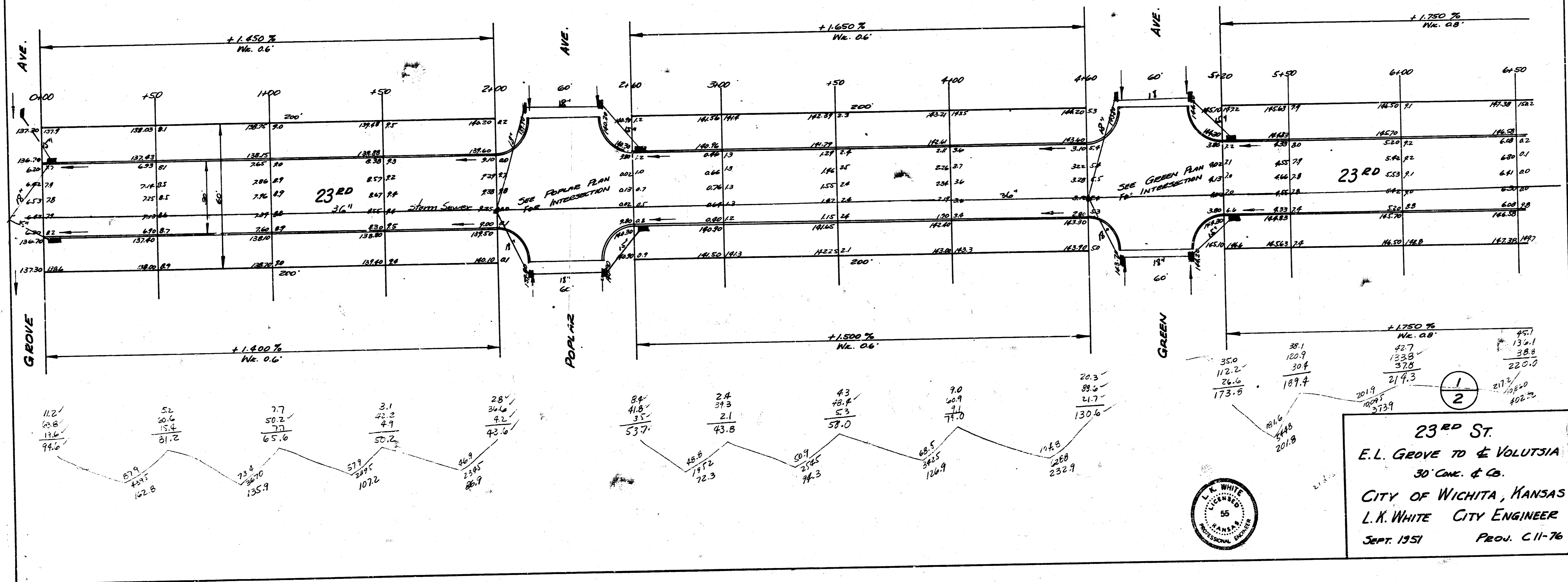


534

Grand Total

Prop	City
2146.8	60.8 w. VDS.
2503.9	
4700.7	w. VDS.
	15.7
	52.2
	42.7
	2.2
	74.3
	126.9
	232.9
	601.8
	373.9
	402.2
	1997.1
	110.8
	2196.8

B.M. 144.53 STANFORD S.E. COR. GROVE & 25TH
 B.M. 133.55 "G" IN GROVE E. OF GROVE S.L. 21ST N. END 4' RADIUS



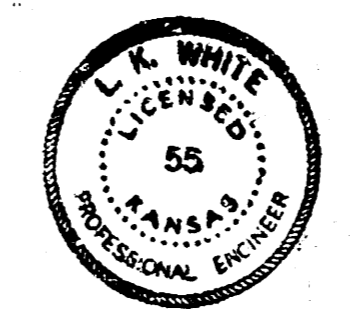
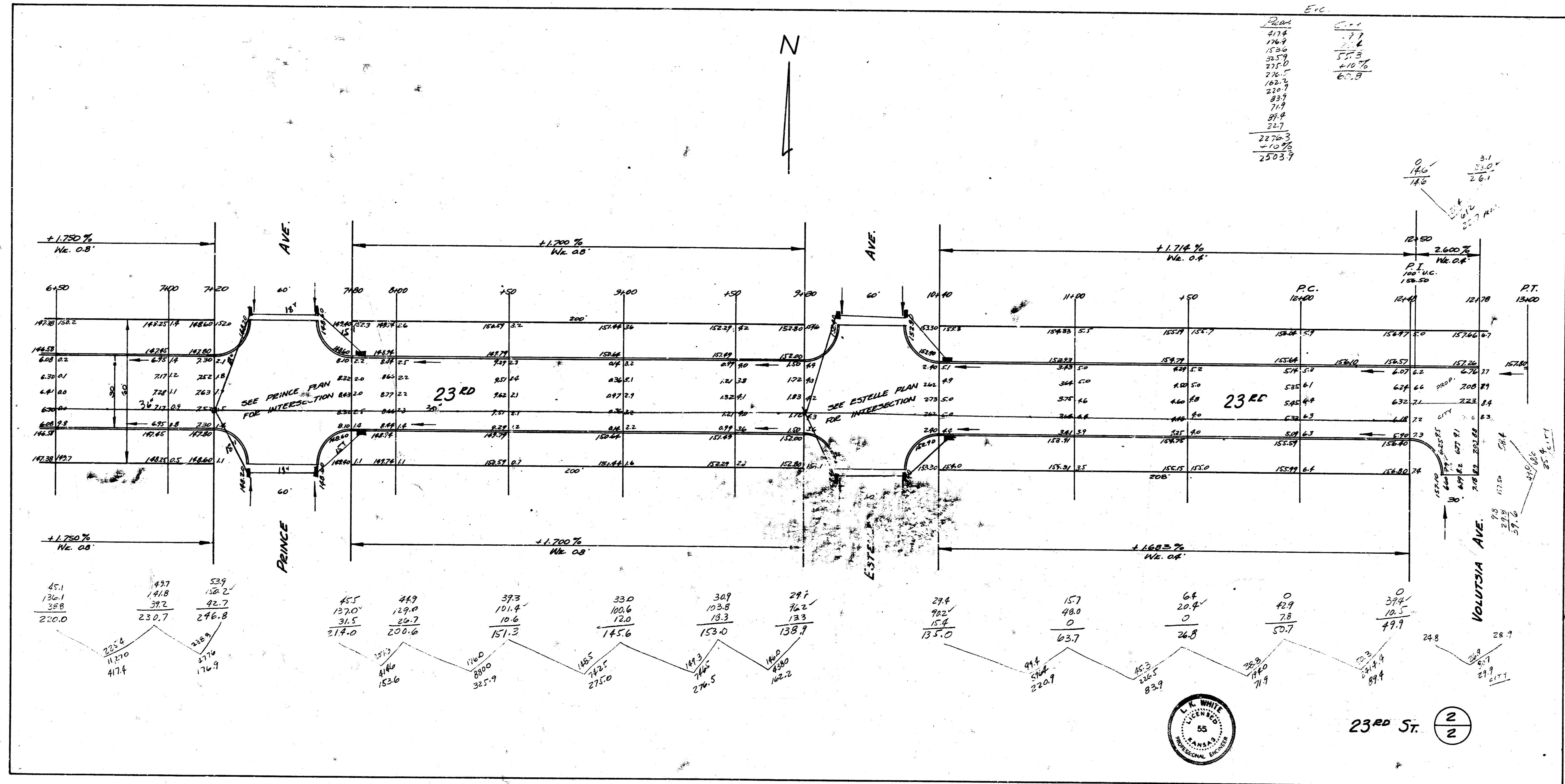
23RD ST.
 E.L. GROVE TO & VOLUTSIA
 30' CONC. & CO.
 CITY OF WICHITA, KANSAS
 L.K. WHITE CITY ENGINEER
 SEPT. 1951 PROJ. C-11-76



ETC.

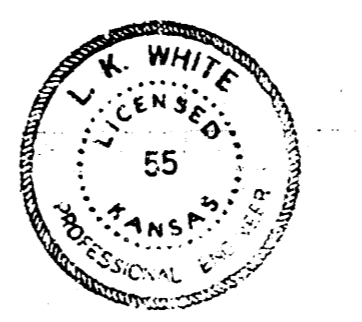
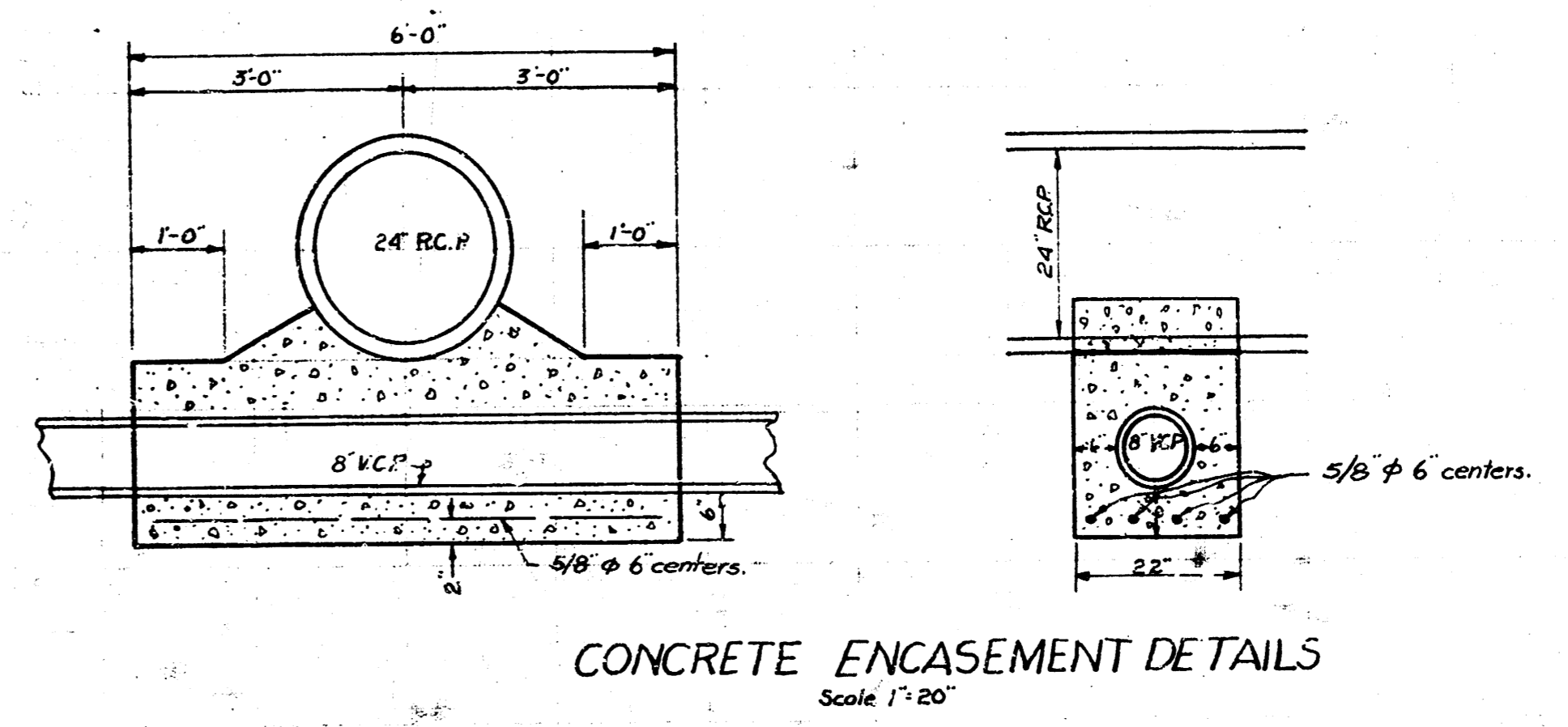
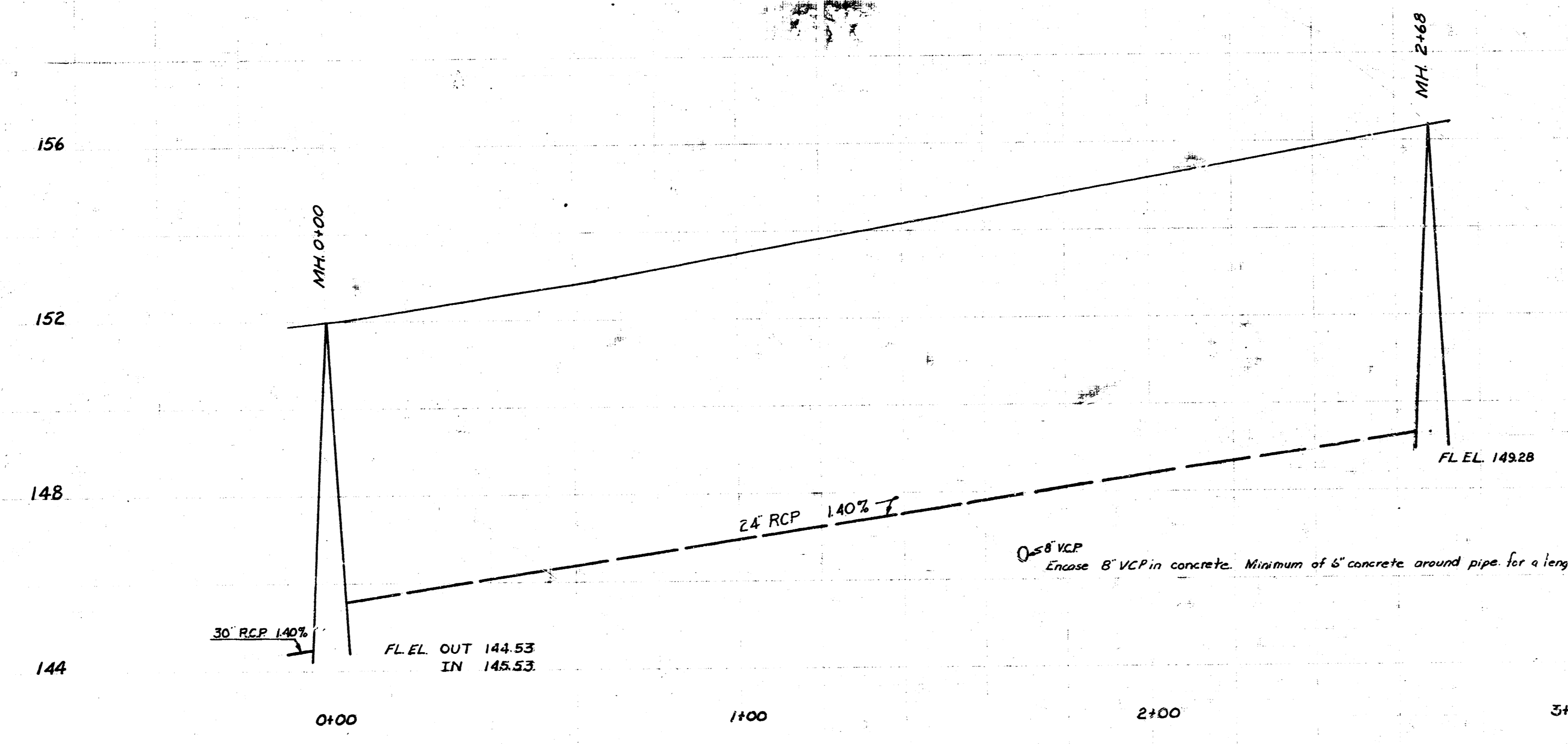
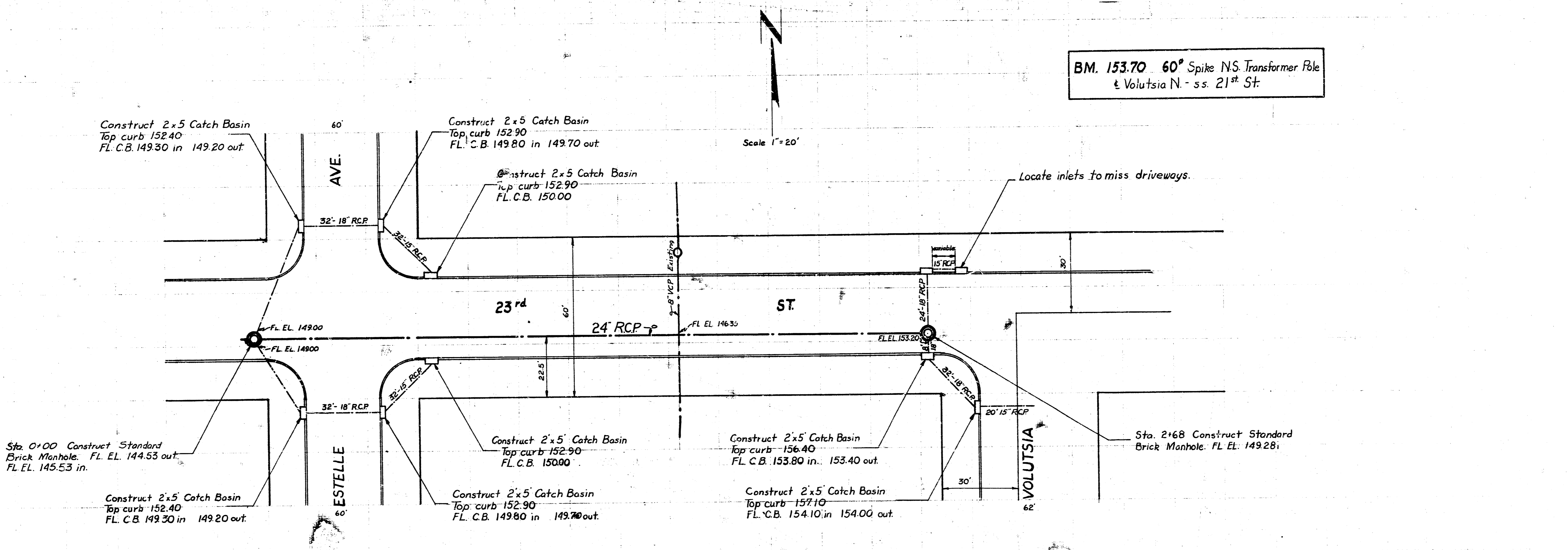
2204	1.71
2174	1.71
1984	1.71
1536	1.71
355	1.71
2250	1.71
216.5	1.71
162.7	1.71
230.7	1.71
837	1.71
714	1.71
574	1.71
227	1.71
2270.3	1.71
-10.76	1.71
2503.7	1.71

0	3.1
14.0	2.0
14.0	2.6



23RD ST. 2/2

BM. 153.70 60° Spike N.S. Transformer Pole
 & Volutsia N. - ss. 21st St.



INCIDENTAL DRAINAGE 23rd ST
 City of Wichita, Kansas
 L. K. White City Engineer
 Sept. 1951 Proj. No. C11-76