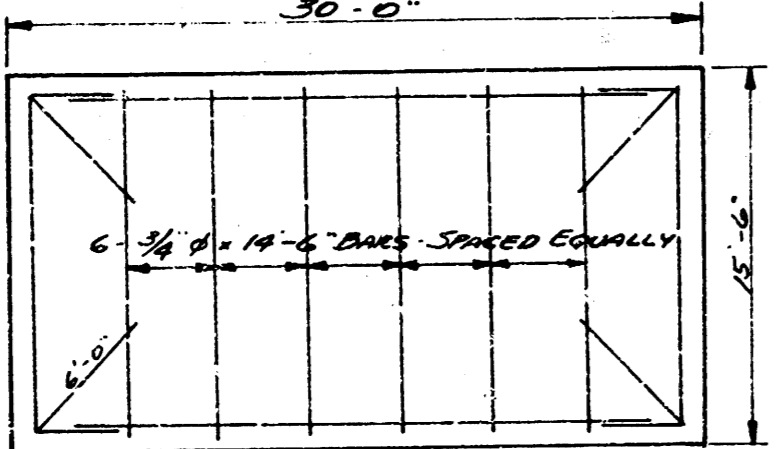
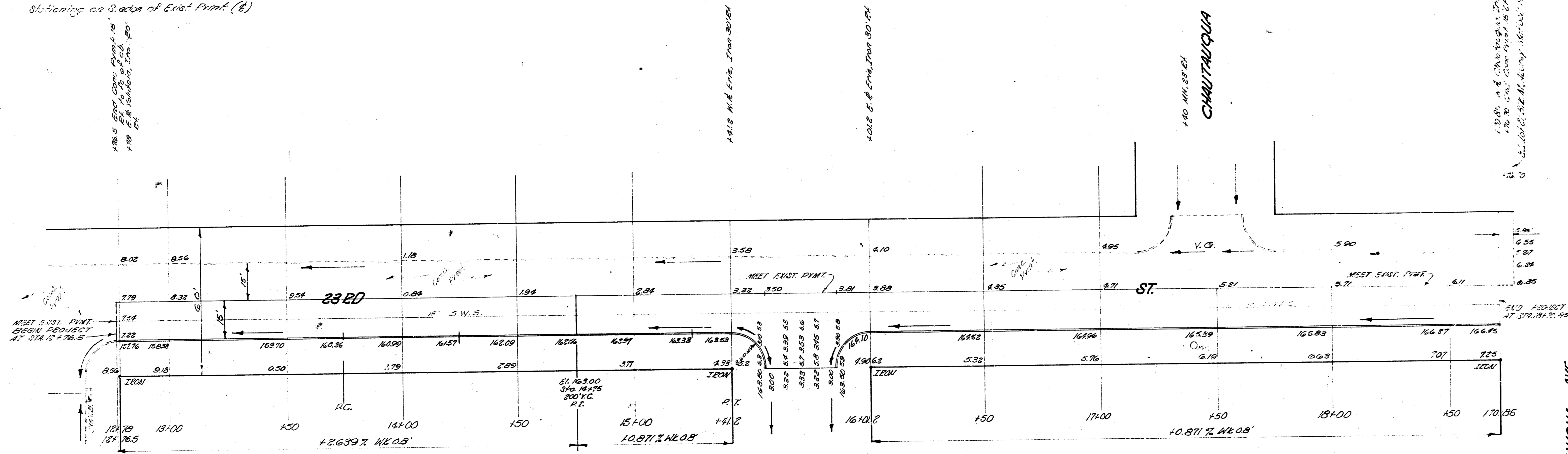


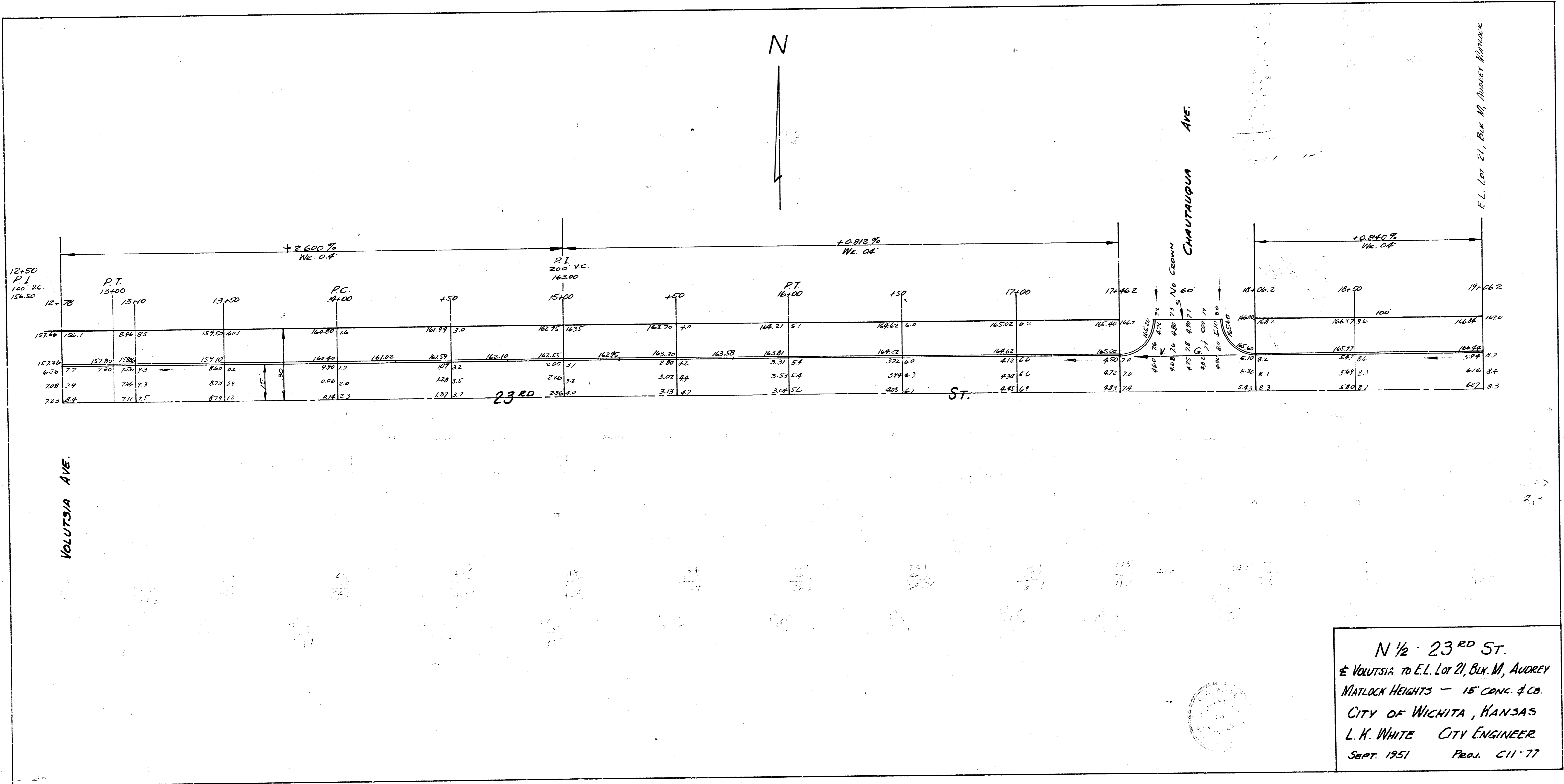
B.M. 180.58 S.W. Cor. Parth. House # 2826 E. 23rd
 B.M. 157.16 "6" in 61.035 S. of 23rd E. Yolkisa
 Stationing on S. side of East Pkwy. (E)



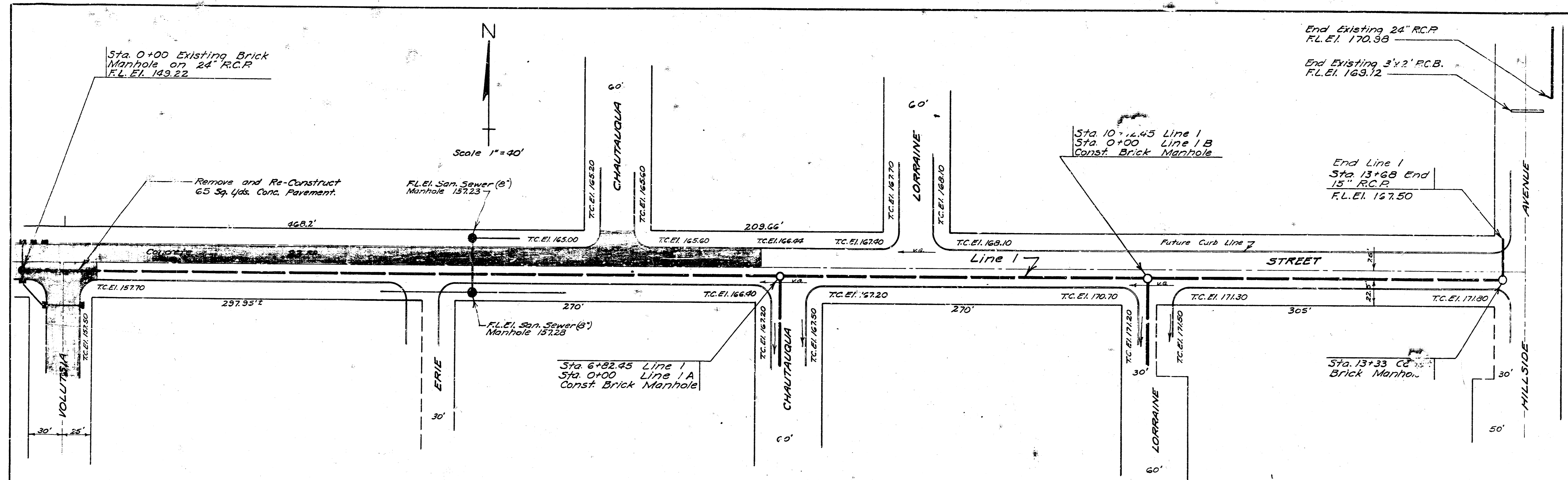
3 1/2 ST.
 E. Yolkisa Ave. to E.L. Lot 2, Blk. M.
 Audrey Matlock Heights First Addition
 16' Conn. & Co.
CITY OF WICHITA, KANSAS
 B.E. SMITH CITY ENGINEER
 JULY 1953 C13-81



Heavy Section
 1/2" x 1/2"
 Checked

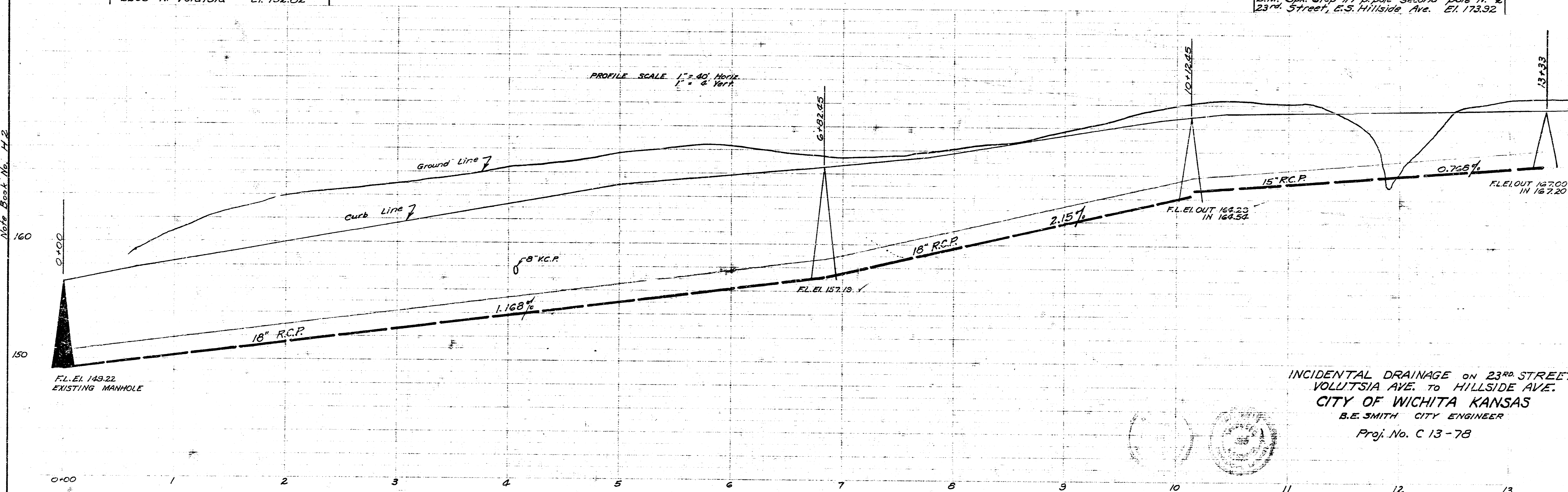


N 1/2 23RD ST.
 E Volusia to E.L. Lot 21, Box M, Audrey
 Matlock Heights - 15' CONC. & CO.
 CITY OF WICHITA, KANSAS
 L. K. WHITE CITY ENGINEER
 SEPT. 1951 Proj. C11-77



B.M. S.E. corner conc. porch house
#2269 N. Volutsia El. 152.82

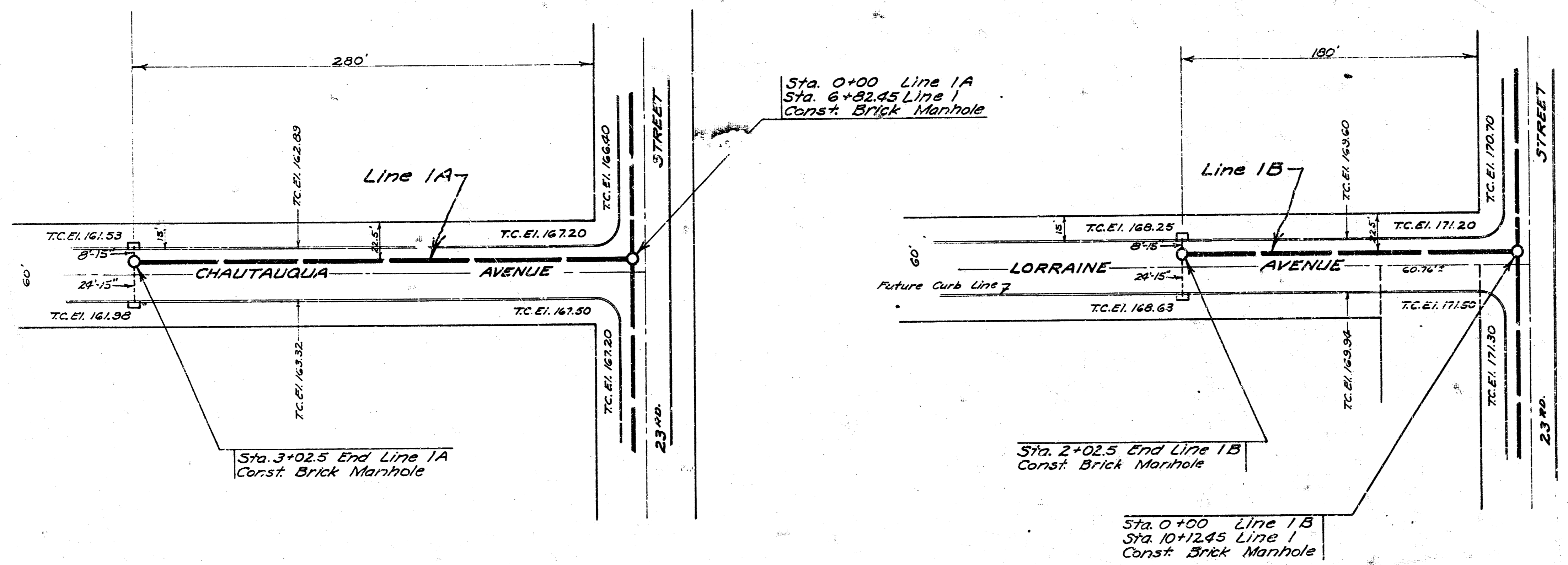
B.M. Spk. step in p. pole second pole N. &
23rd Street, E.S. Hillside Ave. El. 173.32



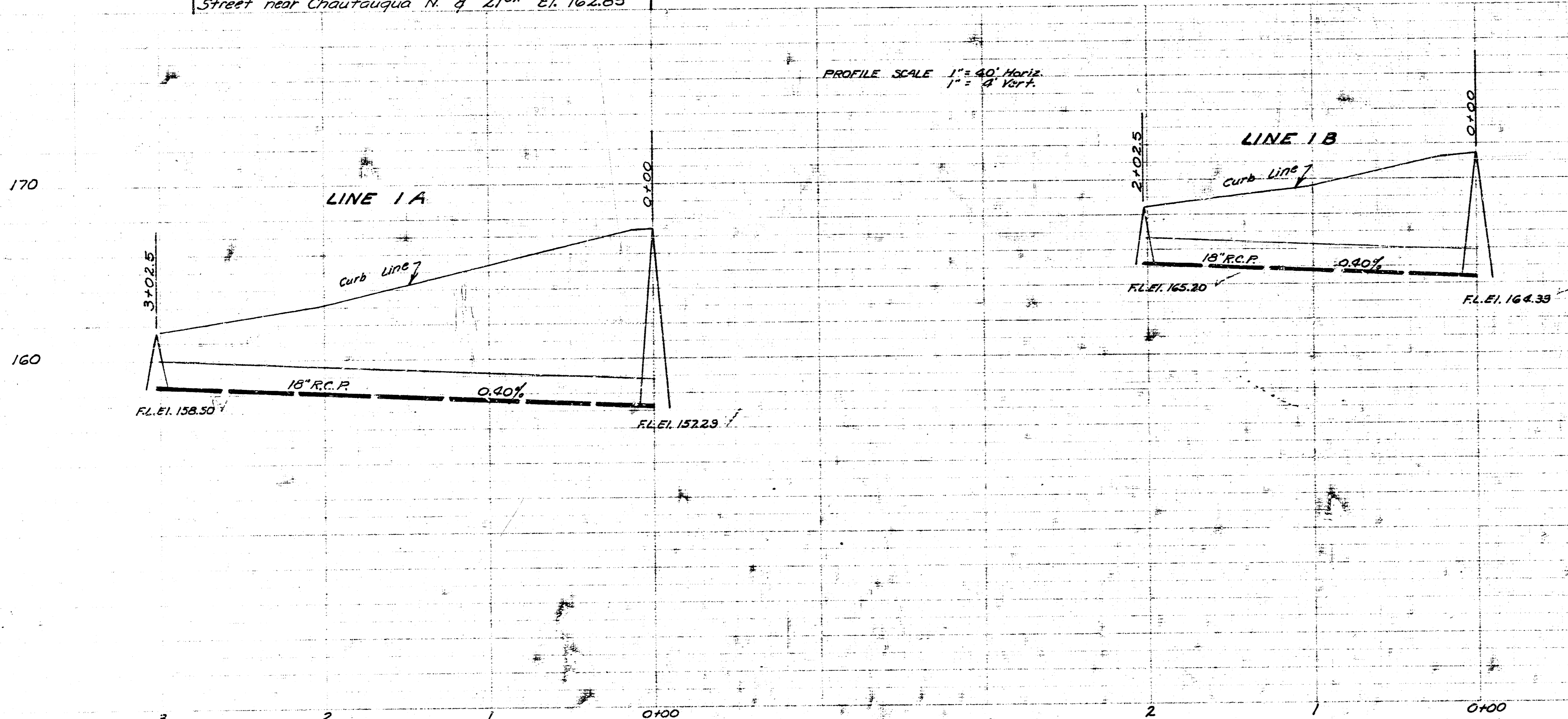
Date 5-11-63
 Drawn by J.L.A.
 Checked by
 Clerk Book No. 42

INCIDENTAL DRAINAGE ON 23RD STREET
VOLUTSIA AVE. TO HILLSIDE AVE.
CITY OF WICHITA KANSAS
B.E. SMITH CITY ENGINEER
Proj. No. C 13-78

Scale 1" = 40'



B.M. N.W. corner conc. porch 4-Flx #3003 E. 21st Street near Chautauqua N. of 21st. El. 162.85



5-11-53
 J.L.A.
 Drawn by
 Checked by
 Note Book No.

INCIDENTAL DRAINAGE - ON 23RD STREET
 VOLUTZIA AVE. TO HILLSIDE AVE.
 CITY OF WICHITA KANSAS
 B.E. SMITH CITY ENGINEER
 Proj. No. C. 13-7B