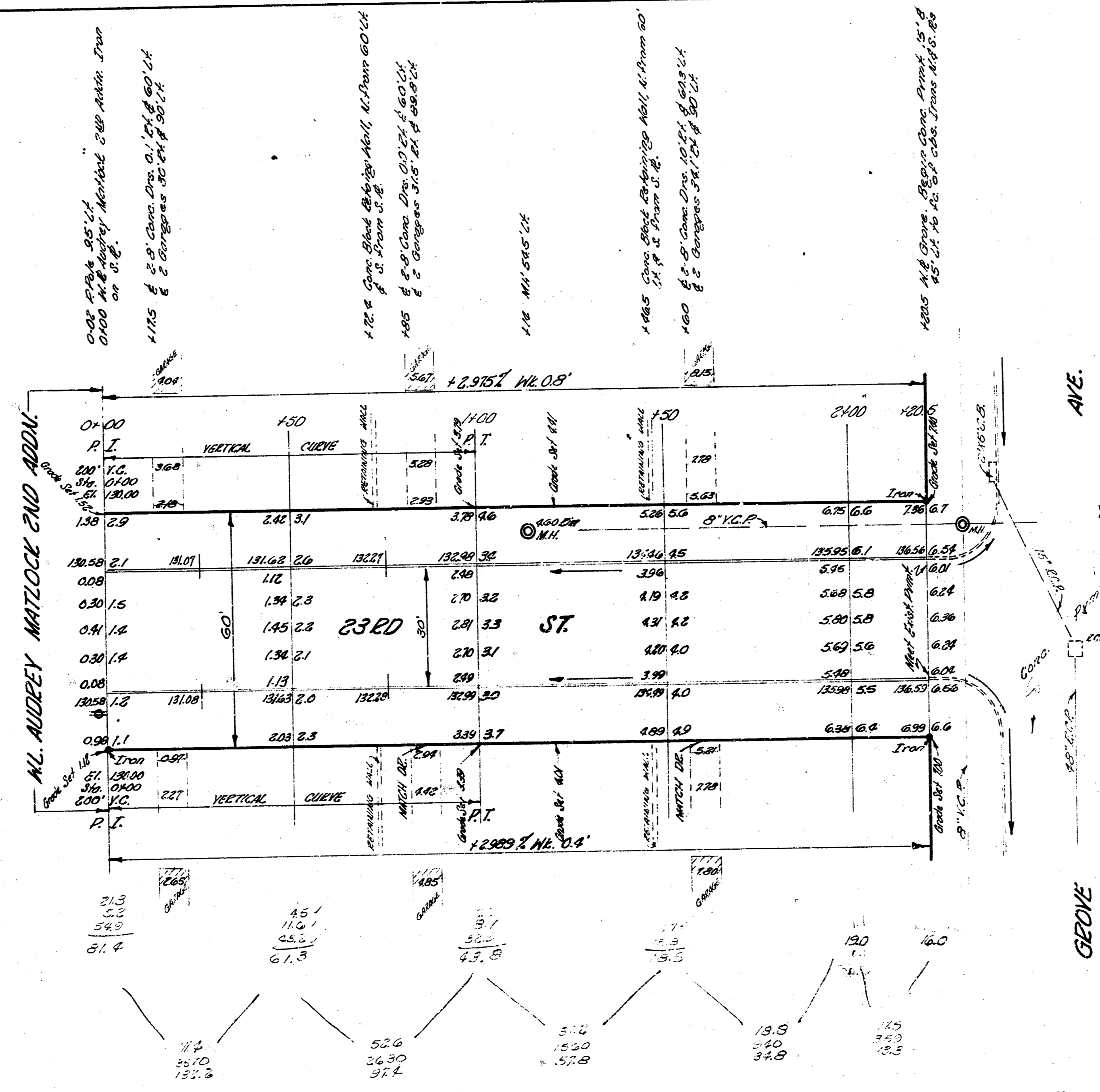


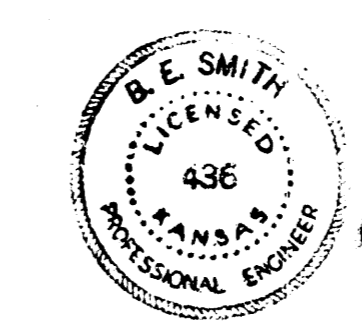
B.M. 133.55' in GLOBE Ward 4 2nd E. ch. Grove, S.L. 2197
 B.M. 136.55' in GLOBE Ward 2nd N.L. Grove, S.S. 2322

Stationing on S.F.

Survey No. BK 68
 Plan C.S.
 Date 11/27/53



GR. PROPERTY
 217
 384.5
 132.5
 Total 734.0



23RD ST.
 W. Audrey Matlock and Audu. 23 W. Grove Ave.
 30' Conc. & Co.
 CITY OF WICHITA, KANSAS
 B.E. SMITH
 SEP. 1953
 CITY ENGINEER
 PROJ. NO. C-3-161