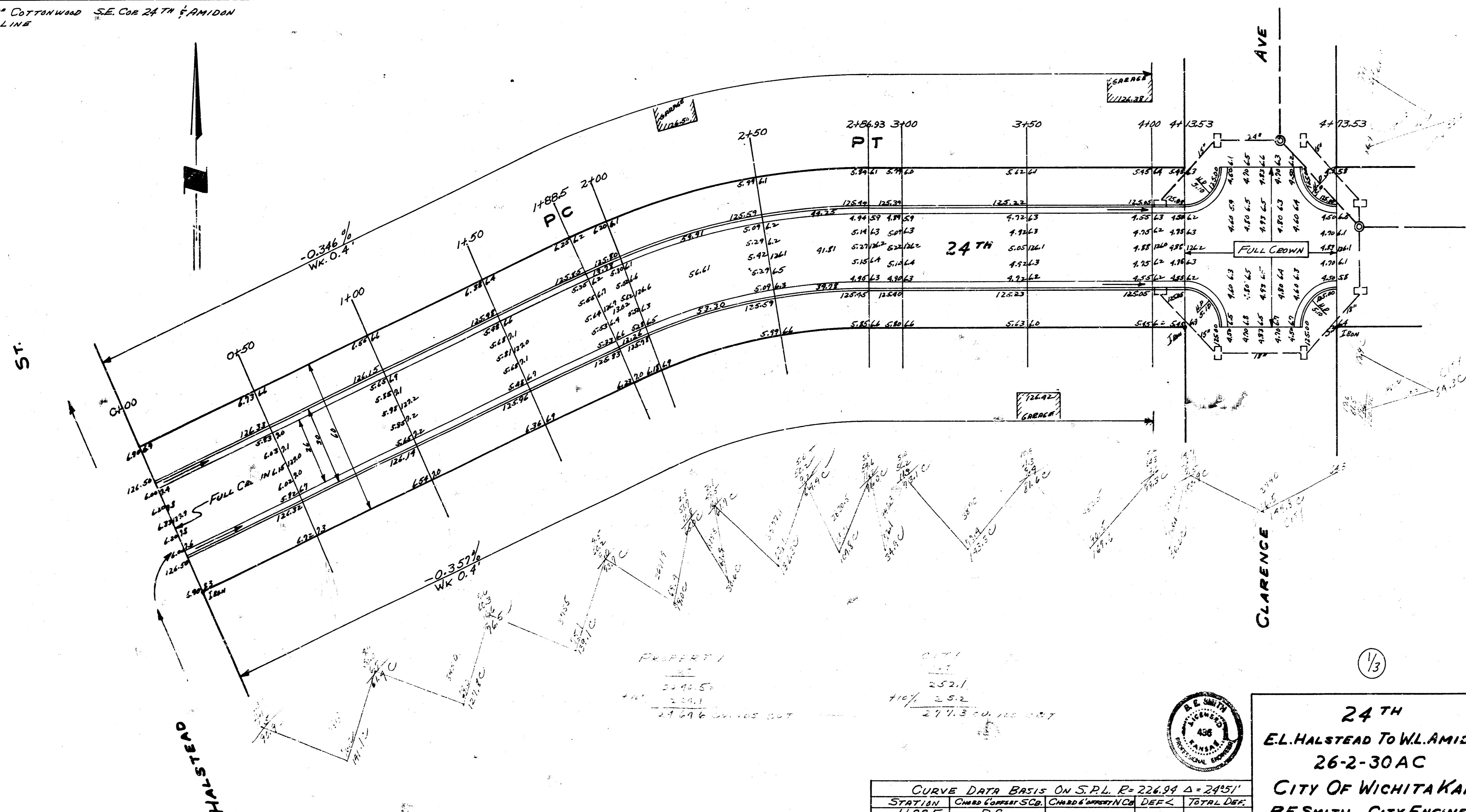


B.M. 127.11 R.R. SPIKE E.S. 40' COTTONWOOD SE COR 24TH & AMIDON  
 CHAINING E ON SOUTH PROP. LINE



CURVE DATA BASIS ON S.P.L. P. 226.89 Δ = 24°51'				
STATION	CHORD BEARING	CHORD DISTANCE	CHORD ANGLE	TOTAL DIST.
1488.5	P.C.			
2100	11.95	14.08	1°27'6"	1129'6"
2150	37.87	27.11	6°18'42"	7143'98"
2186.93	38.35	45.78	41°39'42"	12225'07"

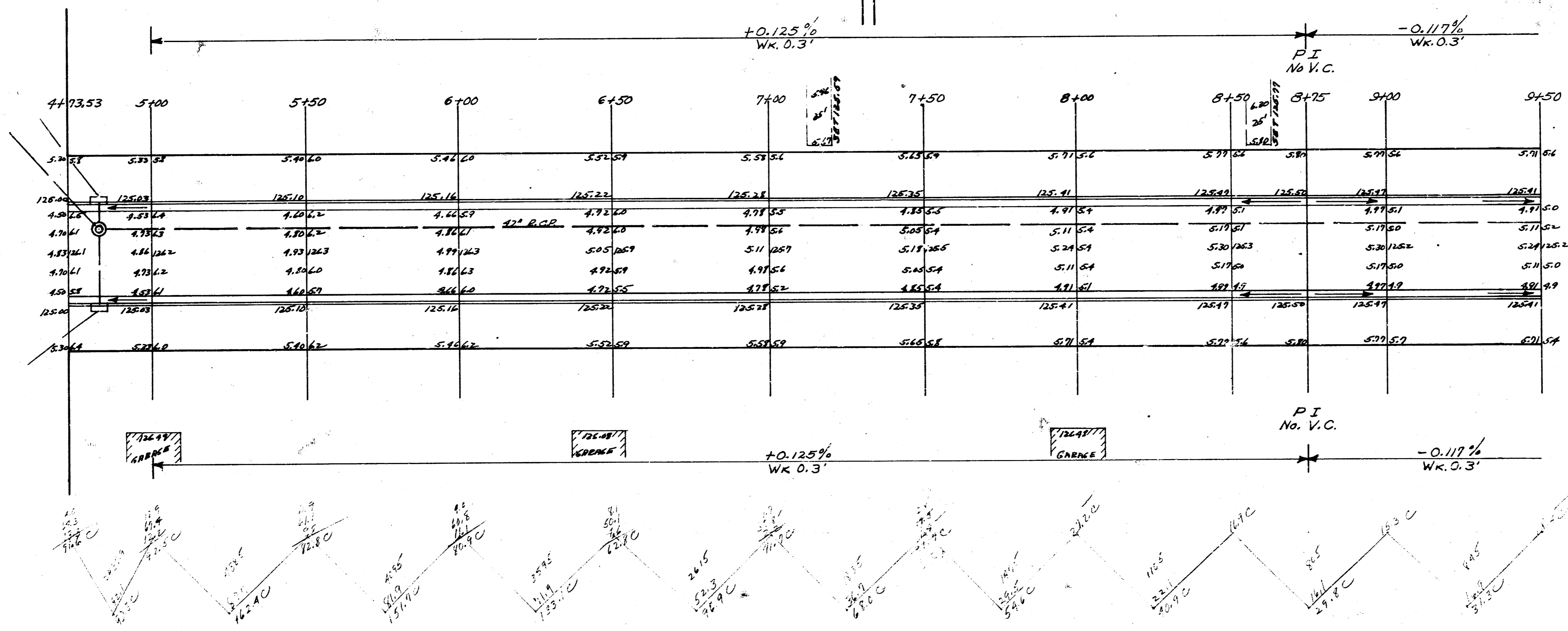
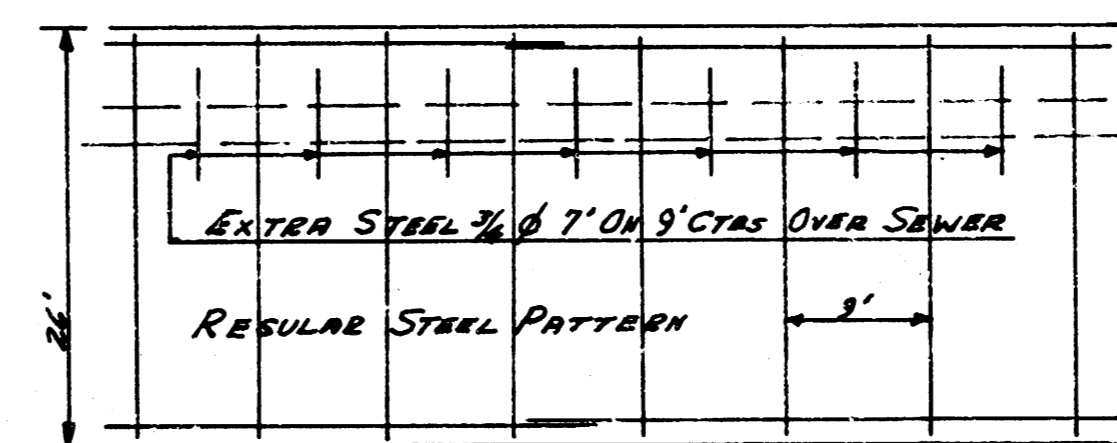


24<sup>TH</sup>  
 EL. HALSTEAD TO W.L. AMIDON  
 26-2-30 AC  
 CITY OF WICHITA, KAN.  
 B. E. SMITH CITY ENGINEER  
 SEPT. 1954 Proj. No. C/4-182

1/3

AVE.

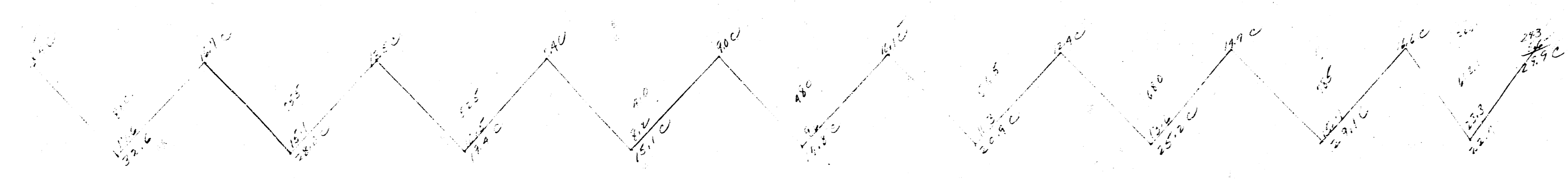
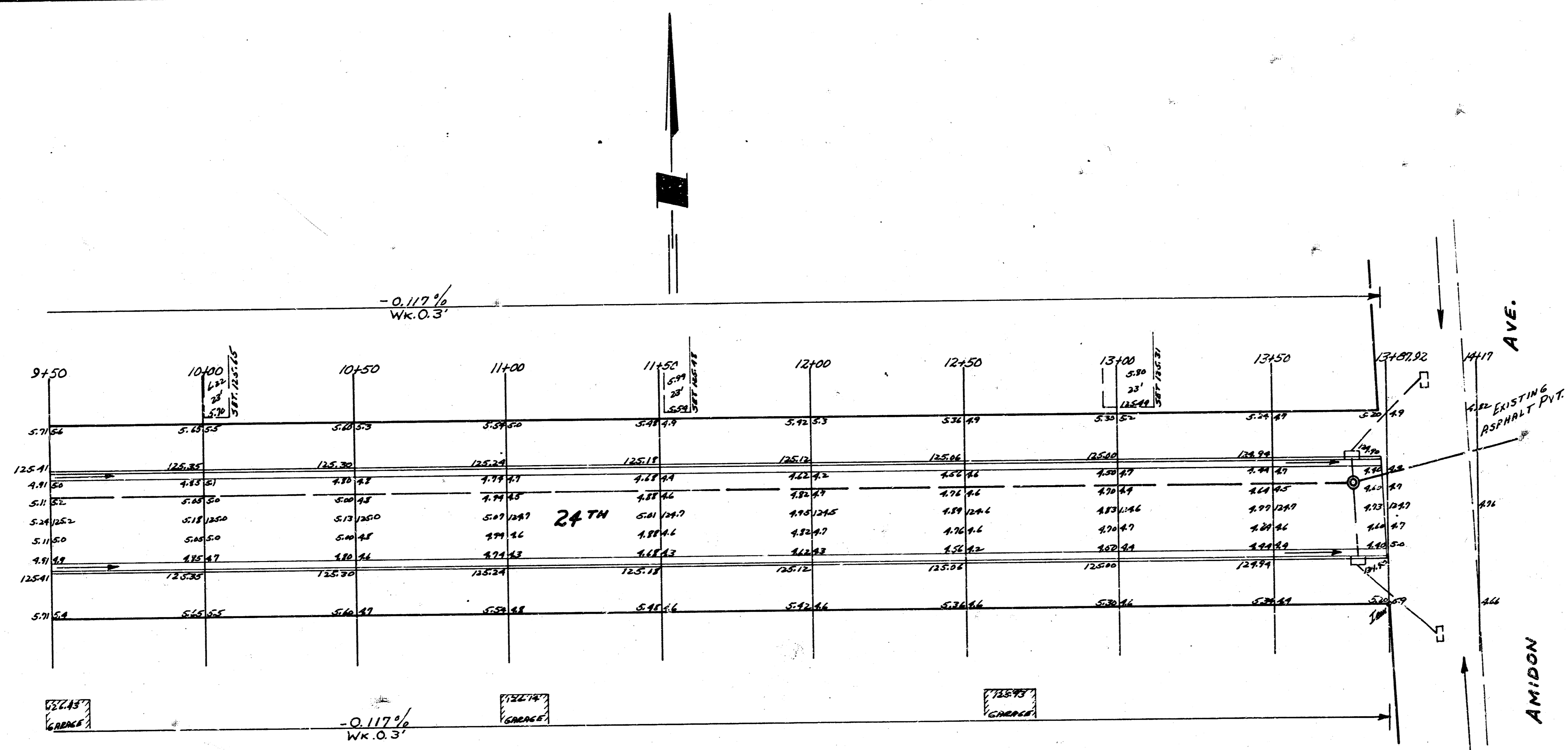
CLARENCE



24 TH

Proj. No C14-182

2/3



3/3  
 24<sup>TH</sup>  
 Proj. No. C14-182