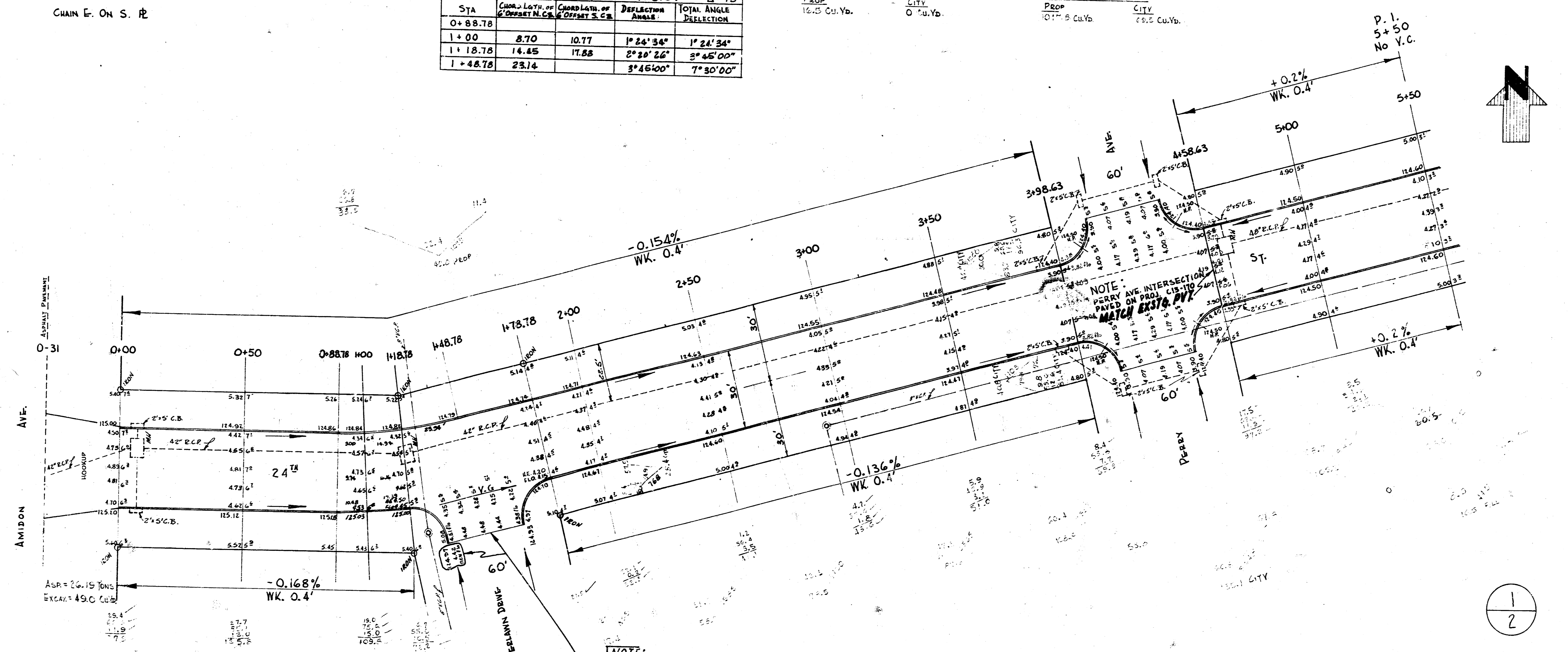


B.M. 127.11 R.P. SPIKE 40' COTTONWOOD S.E. AMIDON & 24<sup>th</sup>

CHAIN E. ON S. R.

DATA FOR CURVE BET. STA 0+88.78 & STA 1+48.78				
STA	CHORD LETH. OF CURVE N. C.B.	COORDINATE OF POINT N. C.B.	DEFLECTION ANGLE	TOTAL ANGLE
0+88.78				
1+00	8.70	10.77	1° 24' 34"	1° 24' 34"
1+18.78	14.45	17.55	2° 20' 26"	3° 45' 00"
1+48.78	23.14	27.56	3° 46' 00"	7° 30' 00"

TOTAL FILL		TOTAL EXCAV.	
PROP.	CITY	PROP.	CITY
16.5 Cu.Yd.	0 Cu.Yd.	107.5 Cu.Yd.	75.0 Cu.Yd.



NOTE:  
Match exists pvt. except set elevs. shown at West side of return & thru V.G. Grind 30' of exstg. pvt. W side of Riverlawn Dr. to insure drainage.

TOTAL FILL		TOTAL EXCAV.	
PROP.	CITY	PROP.	CITY
16.0	0 Cu.Yd.	115.0	75.0
+10%		+10%	
52.8 Cu.Yd.		115.0	

TOTAL FILL		TOTAL EXCAV.	
PROP.	CITY	PROP.	CITY
16.0	0 Cu.Yd.	115.0	75.0
+10%		+10%	
52.8 Cu.Yd.		115.0	

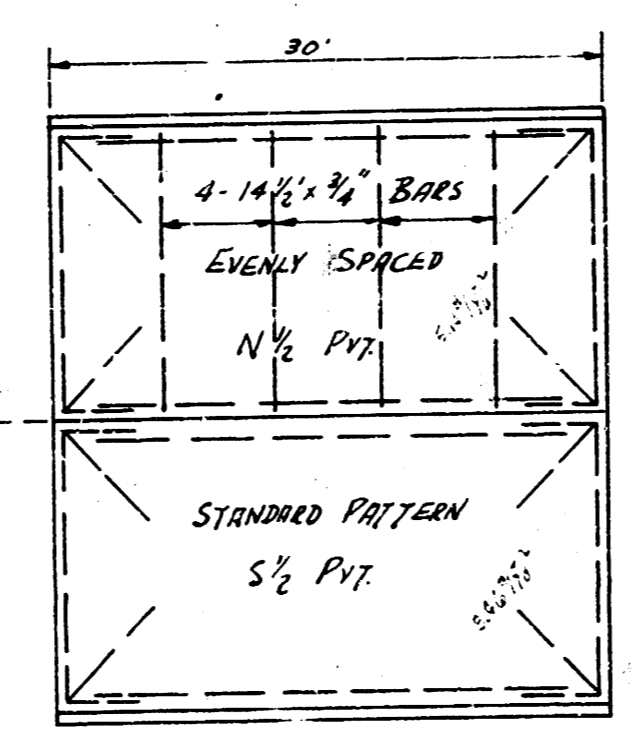
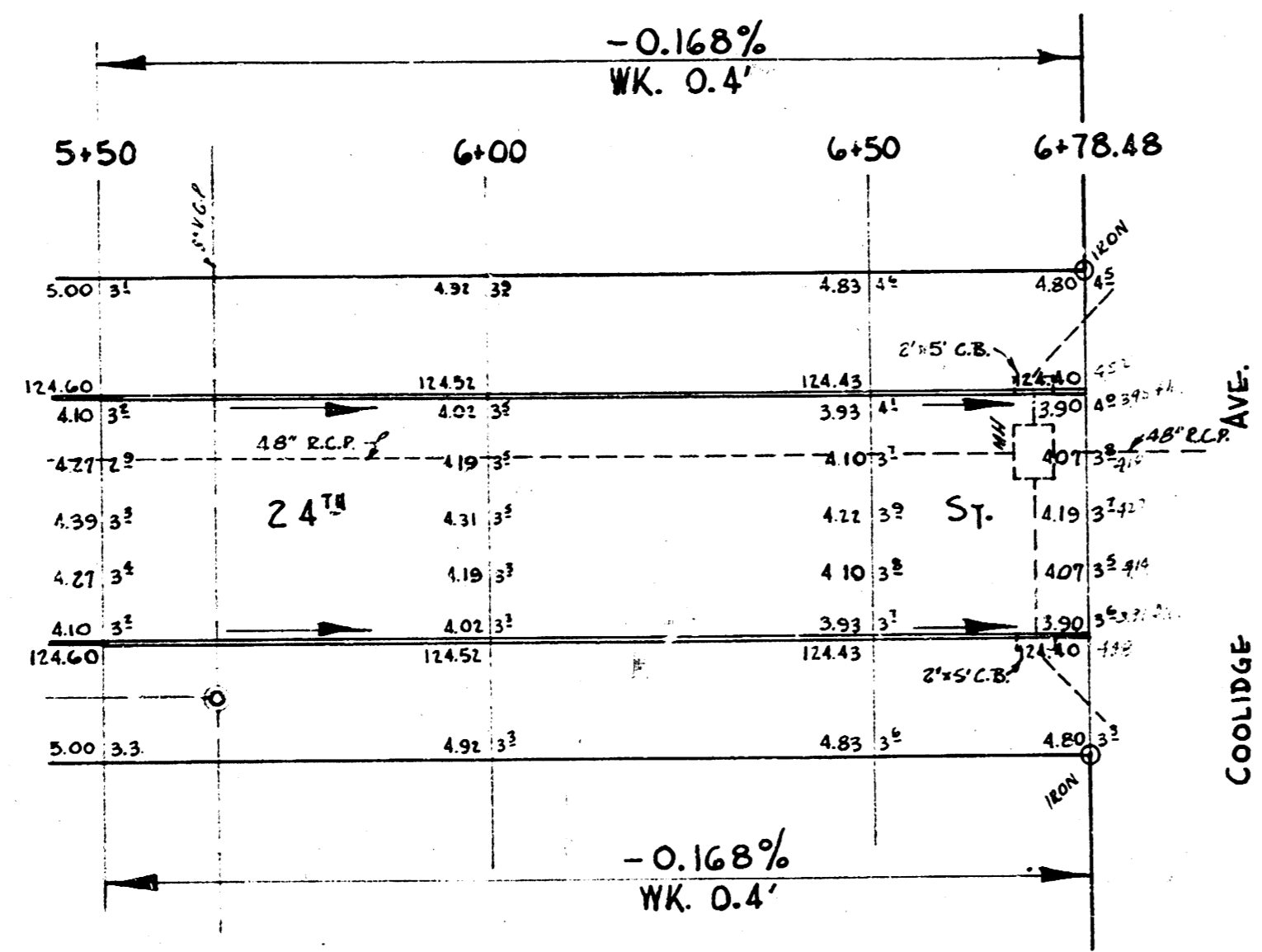
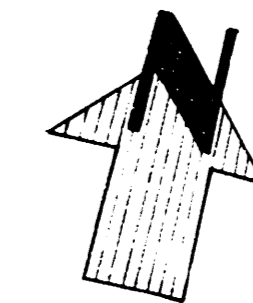
24<sup>th</sup> ST.  
E.L. AMIDON - W.L. COOLIDGE  
30' CONC. & C.B.  
CITY OF WICHITA, KANS.  
B.E. SMITH CITY ENGINEER  
MAY, 1956 PROJ. NO. C-13-174



1  
2

Prop. FILL CITY  
 51.0 Cu.Yb. 0 Cu.Yb.

Prop. EXCAV. CITY  
 11.0 Cu.Yb. 0 Cu.Yb.



BRIDGE DECK  
 24" ST.  
 10'-10" DEEP

2  
2

24<sup>TH</sup> ST.