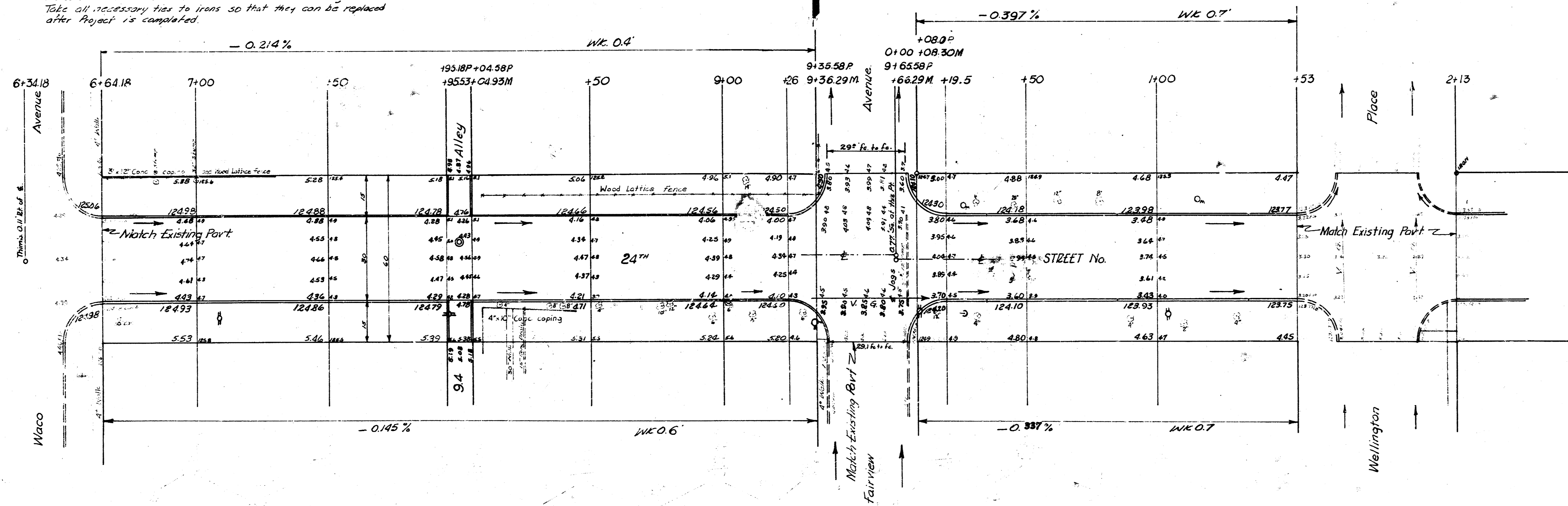


BM 12540 E. spike 1/5 HLP SW corner Waco & 24<sup>th</sup>  
 BN 12736 NW corner concrete porch to 2458 Park Place.

NOTICE TO FIELD ENGINEER: Pavement centered on a line from thumb @ E Basenthal & 24 to N Iron @ on E 24<sup>th</sup> & E Basenthal. At this point, jog 0.77' South hence on a line from here to nail @ 24<sup>th</sup> & W Broadway. Take all necessary ties to iron so that they can be replaced after Project is completed.

NOTICE TO CONTRACTOR:  
 All entrance pipes are to be disposed of in accordance with instructions of City Dirt Checker.



Surveyed by  
 E. E. Smith  
 City Engineer  
 Wichita, Kansas  
 1957

Sheet 1 of 2

24<sup>th</sup> STREET NO  
 El Waco to El Park Place  
 30' Conc & Cb.  
 CITY OF WICHITA, KANSAS  
 B. E. SMITH CITY ENGINEER  
 AUG 1957 PROJ NO C17-27



