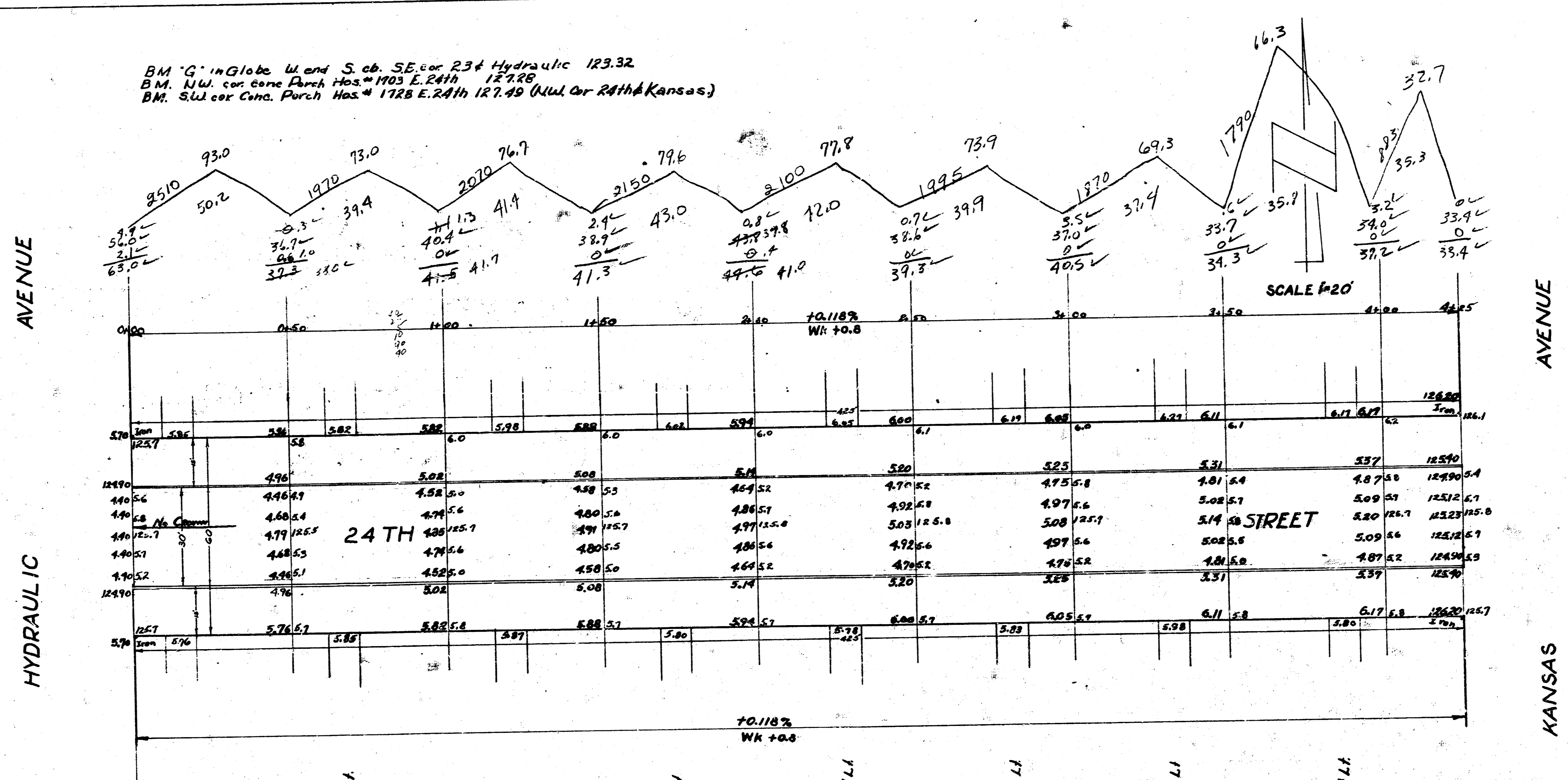


E 3 10-60

BM 'G' in Globe, W. end S. ab. SE. cor 23rd Hydraulic 123.32
 B.M. N.W. cor. same Purch. Ho. # 103 E. 24th 127.26
 B.M. S.W. cor. same Purch. Ho. # 178 E. 24th 127.49 (W. cor. 24th & Kansas)



CITY	PROPERTY
0	95.0
	73.0
	70.1
	71.6
	77.8
	73.9
	69.3
	66.3
	32.7
	642.3
	+10%
	706.5 cu. yds.

C. W. White & Co. Inc. W. 5th St. Wichita, Kan.

AVENUE

HYDRAULIC

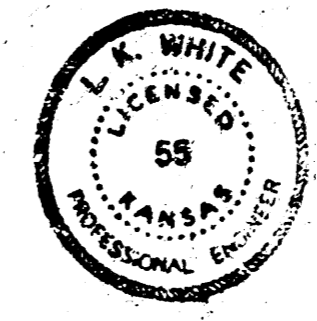
AVENUE

KANSAS

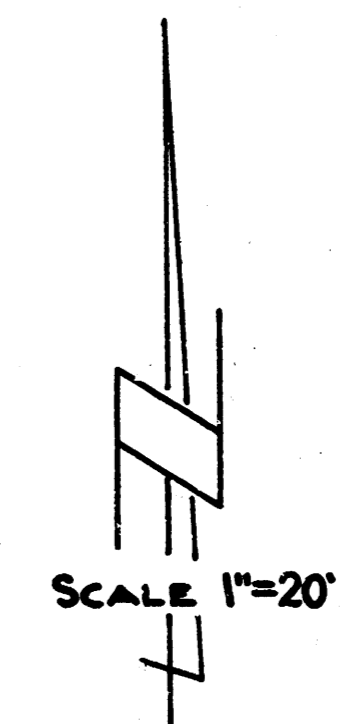
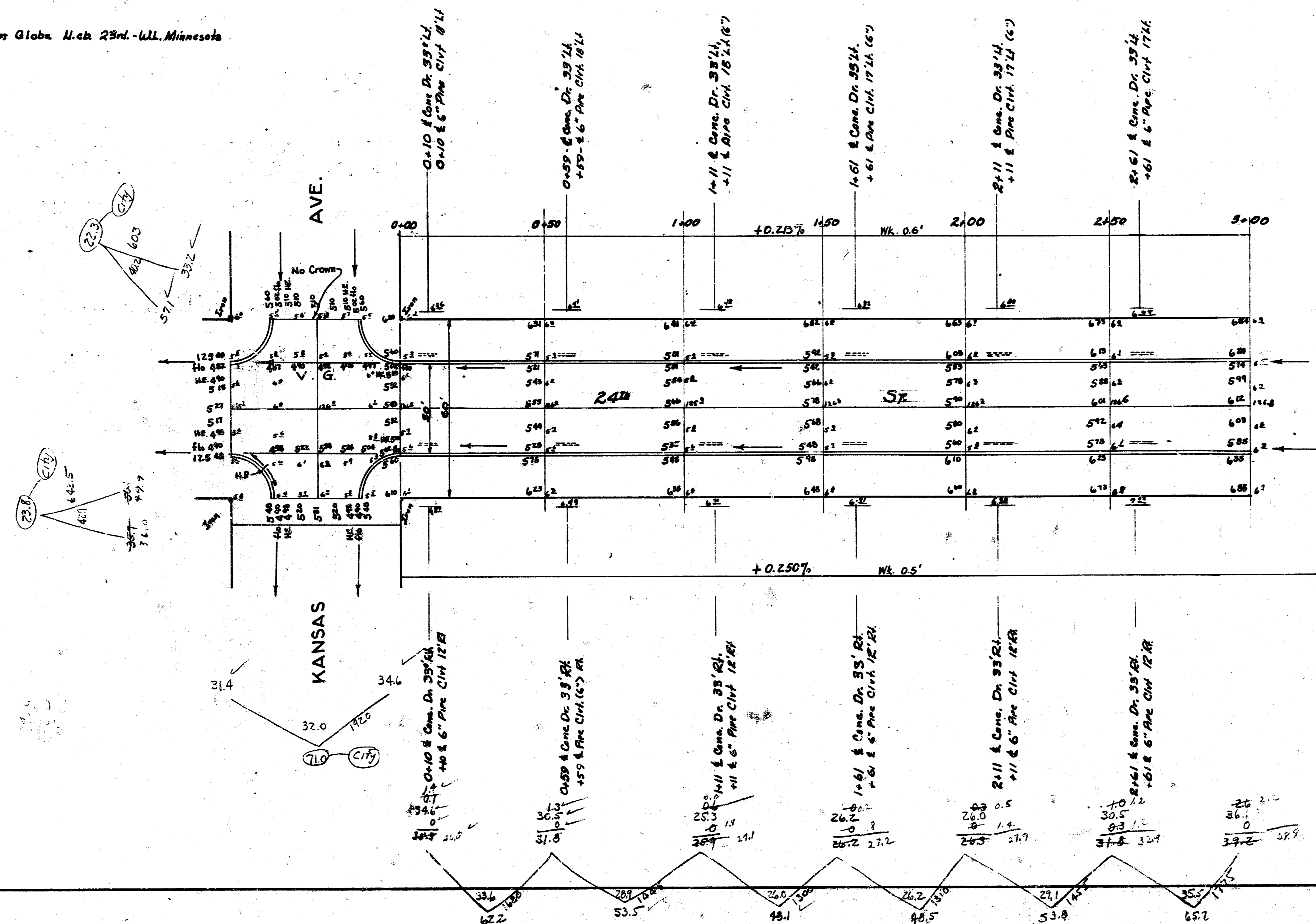
24TH STREET

- +15 Conc. Dr. 30' R/W L.L.
- +67 Conc. Dr. 30' R/W L.L.
- +20 Conc. Dr. 30' R/W L.L.
- +75 Conc. Dr. 30' R/W L.L.
- +87 Conc. Dr. 30' R/W L.L.
- +80 Conc. Dr. 30' R/W L.L.
- +92 Conc. Dr. 30' R/W L.L.
- +86 Conc. Dr. 30' R/W L.L.

24TH STREET
 EL HYDRAULIC TO WL KANSAS
 30' Conc. & Cb
 CITY OF WICHITA, KANS.
 LK White City Engineer
 Sept, 1951 Proj. No. C11-120



BM 12437 "G" in Globa. N. ch. 23rd. - Wl. Minnesota



Prop
62.2
53.5
48.1
48.8
53.8
65.7
331.8

City
23.8
22.3
71.0
117.1

Total Prop
331.8
462.7
794.5
+10%
874.0 Cu yd.

Total City
117.1
42.8
159.9
+12%
179.1

1/2

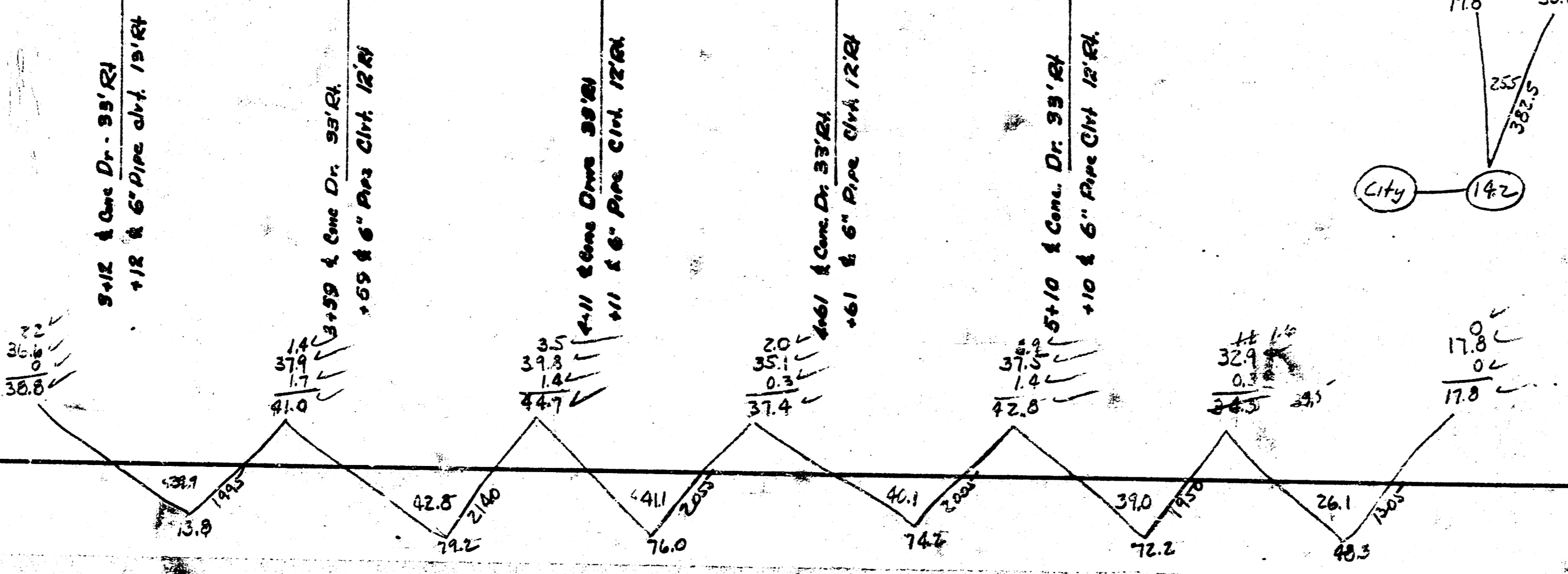
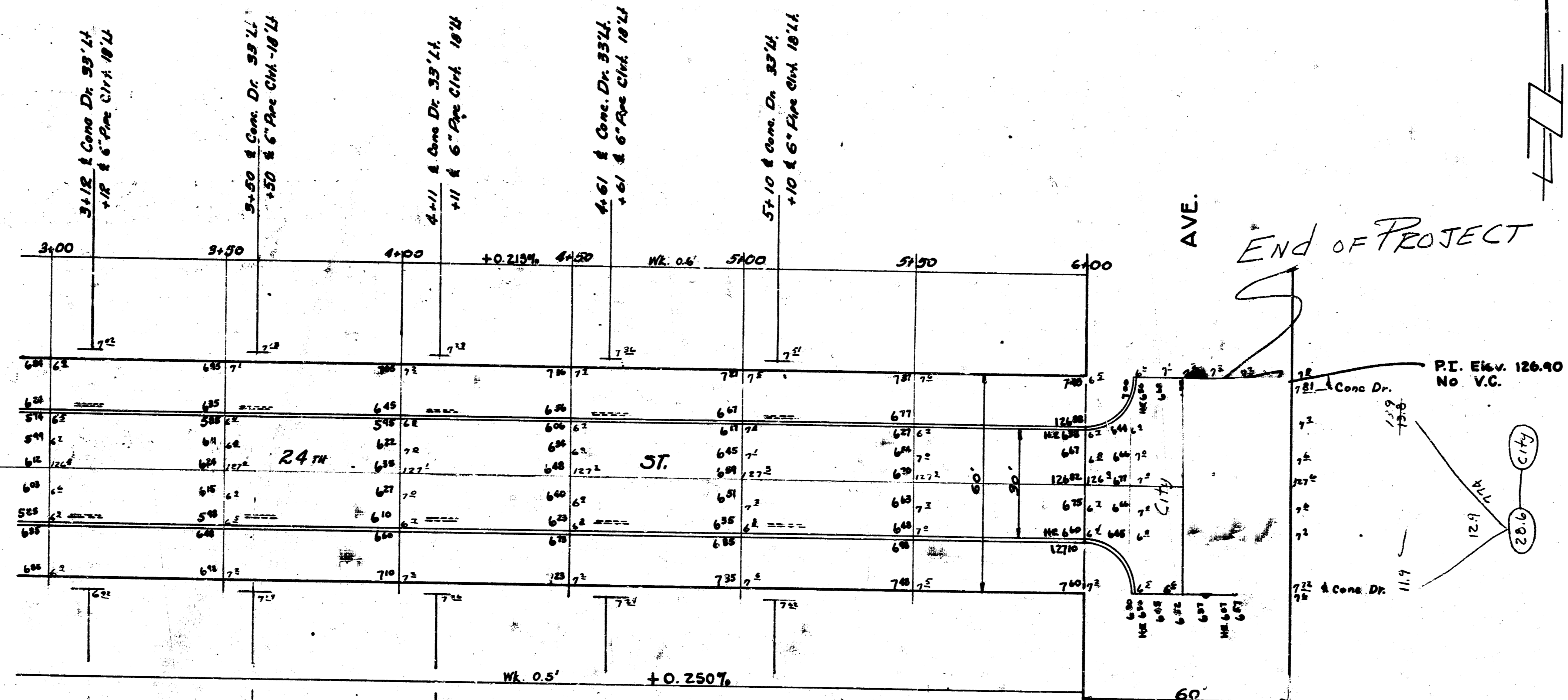
24TH ST.
W. KANSAS AVE. TO EL MINNESOTA AVE.
30' Conc. & Cb.
CITY OF WICHITA, KANSAS
L. WHITE
CITY ENGINEER.
OCT. 1951
PROJ. NO. C11-150



Plan Survey
SS 117 12/19/51
1-8-52
JWH 2-24-52

Prop
 36.6
 2.4
 73.8
 79.2
 76.0
 74.2
 72.2
 46.3
 462.7

City
 142
 28.6
 42.8



AVE. END OF PROJECT

