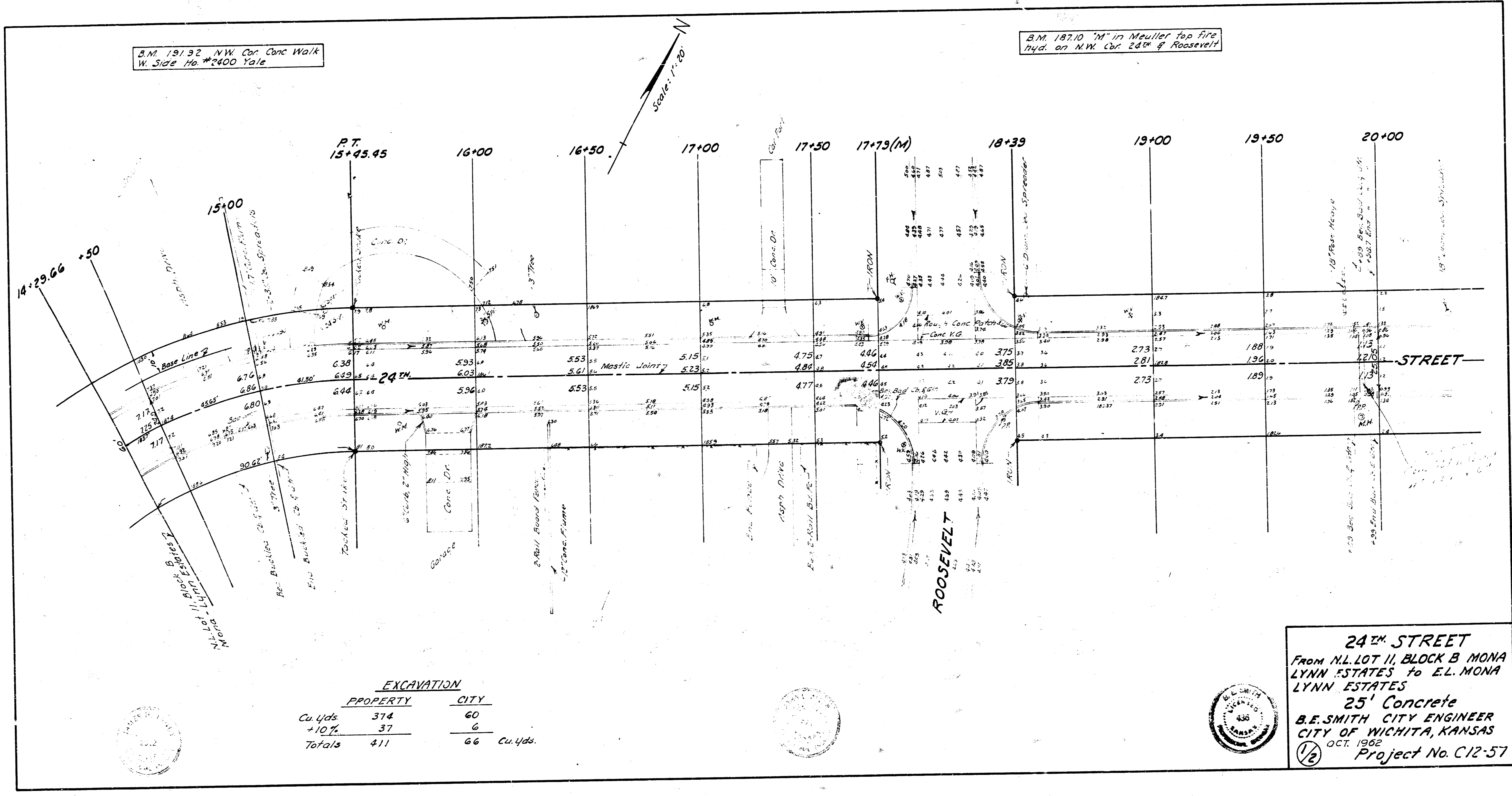


B.M. 191.92 NW Cor. Conc Walk
W. Side Ho. #2400 Yale

B.M. 187.10 "M" in Mueller top fire
hyd. on NW Cor. 24th & Roosevelt

Scale: 1"=20'

Survey J.F.G. B.M. #85
Plat. J.L.A.
L.S. Brady
Contractor



EXCAVATION

PROPERTY	CITY
Cu. Yds. 374	60
+10%	6
Totals 411	66 Cu. Yds.

24th STREET
From N.L. LOT 11, BLOCK B MONA
LYNN ESTATES to E.L. MONA
LYNN ESTATES
25' Concrete
B.E. SMITH CITY ENGINEER
CITY OF WICHITA, KANSAS
OCT. 1962
Project No. C12-57



B.M. 180.54 NE Cor. Conc Walk
S. Side 24th St., 100' E. of Gentry

