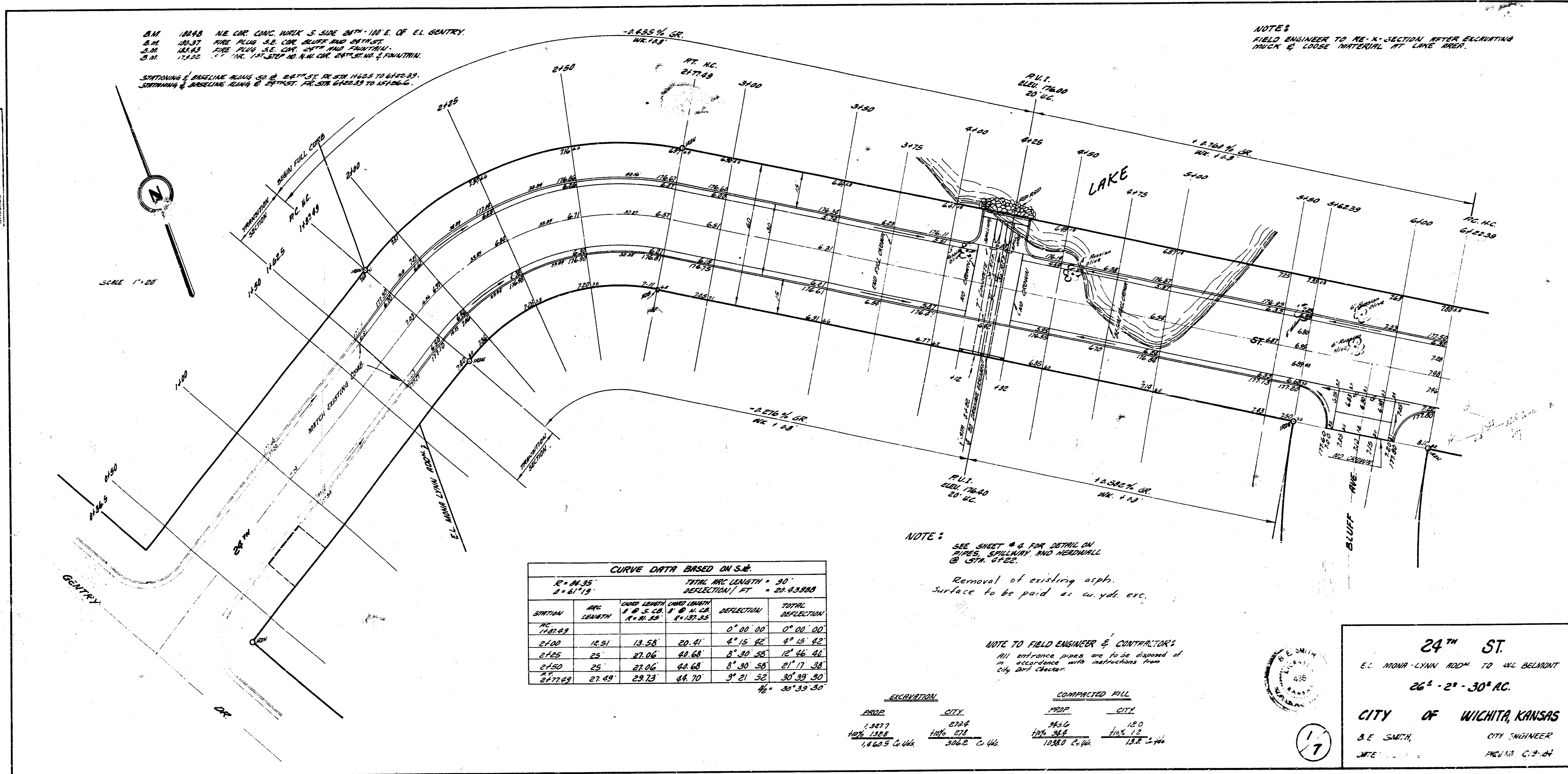


B.M. 10483 NE COR. CONC. MARK S. SIDE INT. 100' E. OF EL. GENTRY.
 B.M. 10484 ONE FLAG S.E. COR. BLUFF AVE. INTERSECT.
 B.M. 10485 ONE FLAG S.E. COR. 24TH AND GENTRY.
 B.M. 10486 ONE FLAG S.E. COR. 24TH AND GENTRY.
 B.M. 10487 ONE FLAG S.E. COR. 24TH AND GENTRY.

STATIONING & BASELINE PLANS SEE SHEET 17-18 FOR ST. 24TH FROM 6142.33 TO 6142.33.
 STATIONING & BASELINE PLANS & ELEVATIONS FOR ST. 24TH FROM 6142.33 TO 6142.33.

NOTES:
 FIELD ENGINEER TO RE-X-SECTION AFTER EXCAVATING
 THICK & LOOSE MATERIAL AT CURVE AREA.



CURVE DATA BASED ON S.M.

STATION	ARC LENGTH	CHORD LENGTH	DEFLECTION	TOTAL DEFLECTION
6142.33	12.51	13.58	20.41	0° 00' 00"
6142.33	25	27.06	40.82	0° 15' 42"
6142.33	25	27.06	40.82	0° 30' 58"
6142.33	27.49	29.73	44.70	0° 45' 30"
				30° 39' 30"

NOTE:
 SEE SHEET 17-18 FOR DETAIL ON
 PIPES, SPALLS, AND RECONSTRUCTION
 @ ST. 24TH.
 Removal of existing asph.
 Surface to be paid as w. yds. etc.

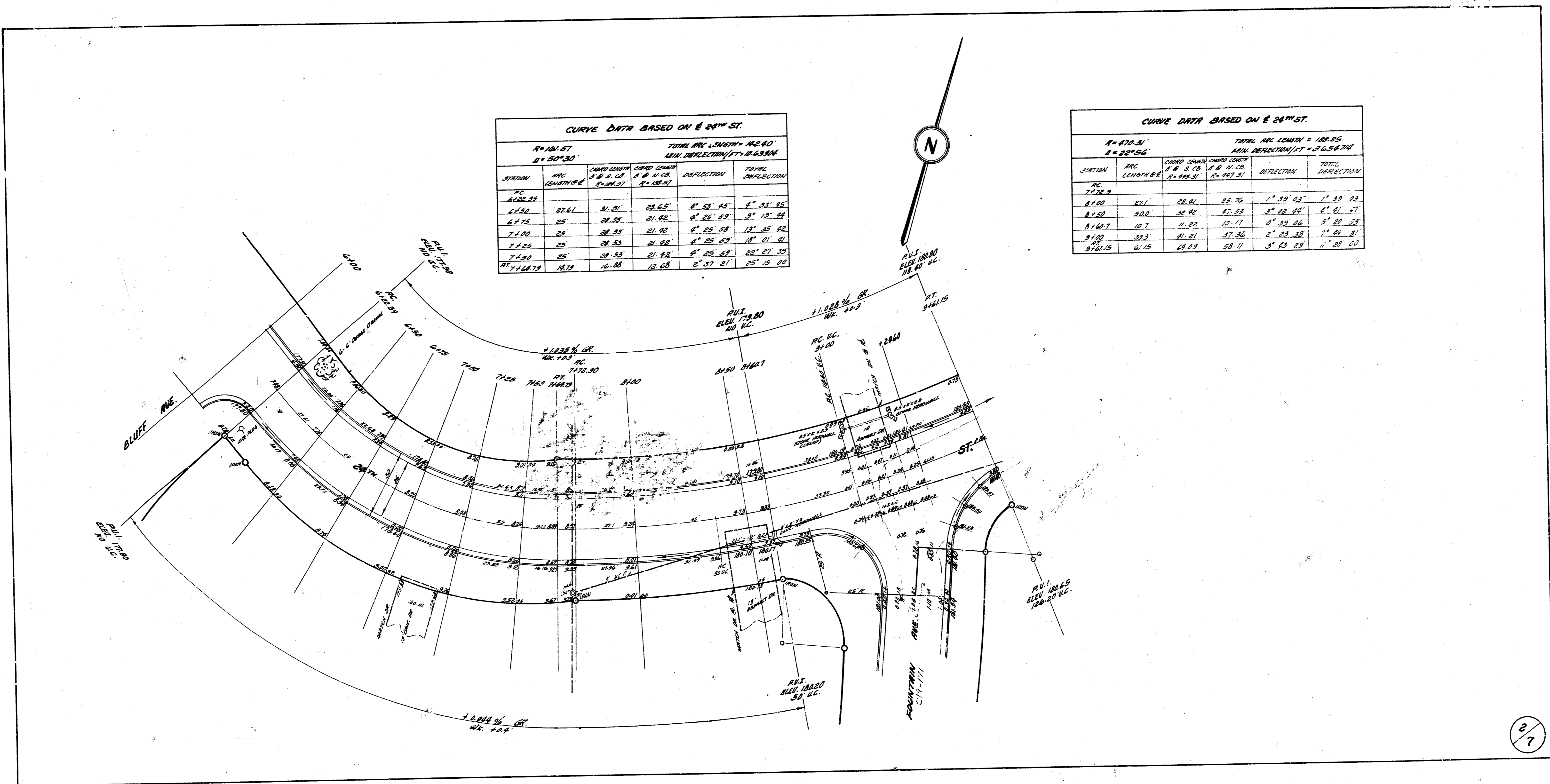
NOTE TO FIELD ENGINEER & CONTRACTOR'S
 All entrance pipes are to be disposed of
 in accordance with instructions from
 City Dept. Engineer.

EXCAVATION		COMPACTED FILL	
PROP.	CITY	PROP.	CITY
1,387.7	0.00	1,387.7	0.00
1,462.5	100.00	1,462.5	100.00
1,462.5	2.00	1,462.5	2.00



24TH ST.
 E.C. MOHR - LYNN ROAD TO W. BELMONT
 26' - 2" - 30' AC.
 CITY OF WICHITA, KANSAS
 S.E. SMITH, CITY ENGINEER
 APR 10 1946

Survey
 Plan
 Checked



CURVE DATA BASED ON E 24TH ST.

$R = 101.87$ **TOTAL ARC LENGTH = 142.40'**
 $\Delta = 30^{\circ}30'$ **MIN. DEFLECTION/FT = 0.63848**

STATION	ARC LENGTH/FT	CHORD LENGTH S @ S.C. P=101.87	CHORD BEARING @ S.C. P=101.87	DEFLECTION	TOTAL DEFLECTION
6000.00					
6050	50.61	51.91	28.65	4° 58' 58"	4° 58' 58"
6100	50	50.59	21.92	4° 56' 52"	9° 55' 50"
6150	50	50.59	21.92	4° 56' 52"	14° 52' 42"
6200	50	50.59	21.92	4° 56' 52"	18° 55' 34"
6250	50	50.59	21.92	4° 56' 52"	23° 02' 26"
6300	50	50.59	21.92	4° 56' 52"	27° 09' 18"
6350	50	50.59	21.92	4° 56' 52"	31° 16' 10"
6400	50	50.59	21.92	4° 56' 52"	35° 23' 02"
6450	50	50.59	21.92	4° 56' 52"	39° 29' 54"
6500	50	50.59	21.92	4° 56' 52"	43° 36' 46"
6550	50	50.59	21.92	4° 56' 52"	47° 43' 38"
6600	50	50.59	21.92	4° 56' 52"	51° 50' 30"
6650	50	50.59	21.92	4° 56' 52"	55° 57' 22"
6700	50	50.59	21.92	4° 56' 52"	59° 54' 14"
6750	50	50.59	21.92	4° 56' 52"	63° 51' 06"
6800	50	50.59	21.92	4° 56' 52"	67° 47' 58"
6850	50	50.59	21.92	4° 56' 52"	71° 44' 50"
6900	50	50.59	21.92	4° 56' 52"	75° 41' 42"
6950	50	50.59	21.92	4° 56' 52"	79° 38' 34"
7000	50	50.59	21.92	4° 56' 52"	83° 35' 26"
7050	50	50.59	21.92	4° 56' 52"	87° 32' 18"
7100	50	50.59	21.92	4° 56' 52"	91° 29' 10"
7146.79	46.79	46.88	12.68	2° 57' 21"	94° 26' 31"

CURVE DATA BASED ON E 24TH ST.

$R = 870.31$ **TOTAL ARC LENGTH = 181.25'**
 $\Delta = 20^{\circ}56'$ **MIN. DEFLECTION/FT = 0.54794**

STATION	ARC LENGTH/FT	CHORD LENGTH S @ S.C. P=870.31	CHORD BEARING @ S.C. P=870.31	DEFLECTION	TOTAL DEFLECTION
7000.00					
7050	50.71	50.81	25.76	1° 39' 03"	1° 39' 03"
7100	50.00	50.92	27.52	1° 38' 00"	3° 17' 03"
7150	50.71	51.22	29.17	1° 36' 06"	4° 53' 09"
7200	50.00	51.51	30.72	1° 34' 12"	6° 27' 21"
7250	50.71	51.81	32.17	1° 32' 18"	7° 59' 39"
7300	50.00	52.10	33.52	1° 30' 24"	9° 29' 63"
7350	50.71	52.40	34.77	1° 28' 30"	10° 58' 03"
7400	50.00	52.69	35.92	1° 26' 36"	12° 26' 39"
7450	50.71	53.00	36.97	1° 24' 42"	13° 55' 21"
7500	50.00	53.29	37.92	1° 22' 48"	15° 24' 03"
7550	50.71	53.60	38.77	1° 20' 54"	16° 52' 57"
7600	50.00	53.89	39.52	1° 19' 00"	18° 21' 57"
7650	50.71	54.20	40.17	1° 17' 06"	19° 51' 03"
7700	50.00	54.49	40.72	1° 15' 12"	21° 20' 15"
7750	50.71	54.80	41.17	1° 13' 18"	22° 49' 33"
7800	50.00	55.09	41.52	1° 11' 24"	24° 18' 57"
7850	50.71	55.40	41.77	1° 09' 30"	25° 48' 27"
7900	50.00	55.69	42.02	1° 07' 36"	27° 17' 51"
7950	50.71	56.00	42.17	1° 05' 42"	28° 47' 33"
8000	50.00	56.29	42.22	1° 03' 48"	30° 17' 21"
8050	50.71	56.60	42.17	1° 01' 54"	31° 47' 15"
8100	50.00	56.89	42.02	1° 00' 00"	33° 17' 15"
8150	50.71	57.20	41.77	0° 58' 06"	34° 47' 21"
8200	50.00	57.49	41.52	0° 56' 12"	36° 17' 33"
8250	50.71	57.80	41.17	0° 54' 18"	37° 47' 51"
8300	50.00	58.09	40.72	0° 52' 24"	39° 18' 15"
8350	50.71	58.40	40.17	0° 50' 30"	40° 48' 45"
8400	50.00	58.69	39.52	0° 48' 36"	42° 19' 21"
8450	50.71	59.00	38.77	0° 46' 42"	43° 50' 03"
8500	50.00	59.29	37.92	0° 44' 48"	45° 20' 51"
8550	50.71	59.60	36.97	0° 42' 54"	46° 51' 45"
8600	50.00	59.89	35.92	0° 41' 00"	48° 22' 45"
8650	50.71	60.20	34.77	0° 39' 06"	49° 53' 51"
8700	50.00	60.49	33.52	0° 37' 12"	51° 24' 51"
8750	50.71	60.80	32.17	0° 35' 18"	52° 55' 51"
8800	50.00	61.09	30.72	0° 33' 24"	54° 26' 51"
8850	50.71	61.40	29.17	0° 31' 30"	55° 57' 51"
8900	50.00	61.69	27.52	0° 29' 36"	57° 28' 51"
8950	50.71	62.00	25.76	0° 27' 42"	58° 59' 51"
9000	50.00	62.29	23.92	0° 25' 48"	60° 30' 51"
9050	50.71	62.60	21.97	0° 23' 54"	62° 01' 51"
9100	50.00	62.89	20.02	0° 22' 00"	63° 32' 51"
9150	50.71	63.20	17.97	0° 20' 06"	65° 03' 51"
9200	50.00	63.49	15.82	0° 18' 12"	66° 34' 51"
9250	50.71	63.80	13.57	0° 16' 18"	68° 05' 51"
9300	50.00	64.09	11.22	0° 14' 24"	69° 36' 51"
9350	50.71	64.40	8.77	0° 12' 30"	71° 07' 51"
9400	50.00	64.69	6.22	0° 10' 36"	72° 38' 51"
9450	50.71	65.00	3.57	0° 08' 42"	74° 09' 51"
9500	50.00	65.29	0.92	0° 06' 48"	75° 40' 51"
9550	50.71	65.60		0° 04' 54"	77° 11' 51"
9600	50.00	65.89		0° 03' 00"	78° 42' 51"
9650	50.71	66.20		0° 01' 06"	80° 13' 51"
9700	50.00	66.49		0° 00' 12"	81° 44' 51"
9750	50.71	66.80		0° 00' 18"	83° 15' 51"
9800	50.00	67.09		0° 00' 24"	84° 46' 51"
9850	50.71	67.40		0° 00' 30"	86° 17' 51"
9900	50.00	67.69		0° 00' 36"	87° 48' 51"
9950	50.71	68.00		0° 00' 42"	89° 19' 51"
10000	50.00	68.29		0° 00' 48"	90° 50' 51"
10050	50.71	68.60		0° 00' 54"	92° 21' 51"
10100	50.00	68.89		0° 01' 00"	93° 52' 51"
10150	50.71	69.20		0° 01' 06"	95° 23' 51"
10200	50.00	69.49		0° 01' 12"	96° 54' 51"
10250	50.71	69.80		0° 01' 18"	98° 25' 51"
10300	50.00	70.09		0° 01' 24"	99° 56' 51"
10350	50.71	70.40		0° 01' 30"	101° 27' 51"
10400	50.00	70.69		0° 01' 36"	102° 58' 51"
10450	50.71	71.00		0° 01' 42"	104° 29' 51"
10500	50.00	71.29		0° 01' 48"	106° 00' 51"
10550	50.71	71.60		0° 01' 54"	107° 31' 51"
10600	50.00	71.89		0° 02' 00"	109° 02' 51"
10650	50.71	72.20		0° 02' 06"	110° 33' 51"
10700	50.00	72.49		0° 02' 12"	112° 04' 51"
10750	50.71	72.80		0° 02' 18"	113° 35' 51"
10800	50.00	73.09		0° 02' 24"	115° 06' 51"
10850	50.71	73.40		0° 02' 30"	116° 37' 51"
10900	50.00	73.69		0° 02' 36"	118° 08' 51"
10950	50.71	74.00		0° 02' 42"	119° 39' 51"
11000	50.00	74.29		0° 02' 48"	121° 10' 51"
11050	50.71	74.60		0° 02' 54"	122° 41' 51"
11100	50.00	74.89		0° 03' 00"	124° 12' 51"
11150	50.71	75.20		0° 03' 06"	125° 43' 51"
11200	50.00	75.49		0° 03' 12"	127° 14' 51"
11250	50.71	75.80		0° 03' 18"	128° 45' 51"
11300	50.00	76.09		0° 03' 24"	130° 16' 51"
11350	50.71	76.40		0° 03' 30"	131° 47' 51"
11400	50.00	76.69		0° 03' 36"	133° 18' 51"
11450	50.71	77.00		0° 03' 42"	134° 49' 51"
11500	50.00	77.29		0° 03' 48"	136° 20' 51"
11550	50.71	77.60		0° 03' 54"	137° 51' 51"
11600	50.00	77.89		0° 04' 00"	139° 22' 51"
11650	50.71	78.20		0° 04' 06"	140° 53' 51"
11700	50.00	78.49		0° 04' 12"	142° 24' 51"
11750	50.71	78.80		0° 04' 18"	143° 55' 51"
11800	50.00	79.09		0° 04' 24"	145° 26' 51"
11850	50.71	79.40		0° 04' 30"	146° 57' 51"
11900	50.00	79.69		0° 04' 36"	148° 28' 51"
11950	50.71	80.00		0° 04' 42"	149° 59' 51"
12000	50.00	80.29		0° 04' 48"	151° 30' 51"
12050	50.71	80.60		0° 04' 54"	153° 01' 51"
12100	50.00	80.89		0° 05' 00"	154° 32' 51"
12150	50.71	81.20		0° 05' 06"	156° 03' 51"
12200	50.00	81.49		0° 05' 12"	157° 34' 51"
12250	50.71	81.80		0° 05' 18"	159° 05' 51"
12300	50.00	82.09		0° 05' 24"	160° 36' 51"
12350	50.71	82.40		0° 05' 30"	162° 07' 51"
12400	50.00	82.69		0° 05' 36"	163° 38' 51"
12450	50.71	83.00		0° 05' 42"	165° 09' 51"
12500	50.00	83.29		0° 05' 48"	166° 40' 51"
12550	50.71	83.60		0° 05' 54"	168° 11' 51"
12600	50.00	83.89		0° 06' 00"	169° 42' 51"
12650	50.71	84.20		0° 06' 06"	171° 13' 51"
12700	50.00	84.49		0° 06' 12"	172° 44' 51"
12750	50.71	84.80		0° 06' 18"	174° 15' 51"
12800	50.00	85.09		0° 06' 24"	175° 46' 51"
12850	50.71	85.40		0° 06' 30"	177° 17' 51"
12900	50.00	85.69		0° 06' 36"	178° 48' 51"
12950	50.71	86.00		0° 06' 42"	180° 19' 51"
13000	50.00	86.29		0° 06' 48"	181° 50' 51"
13050	50.71	86.60		0° 06' 54"	183° 21' 51"
13100	50.00	86.89		0° 07' 00"	184° 52' 51"
1					

