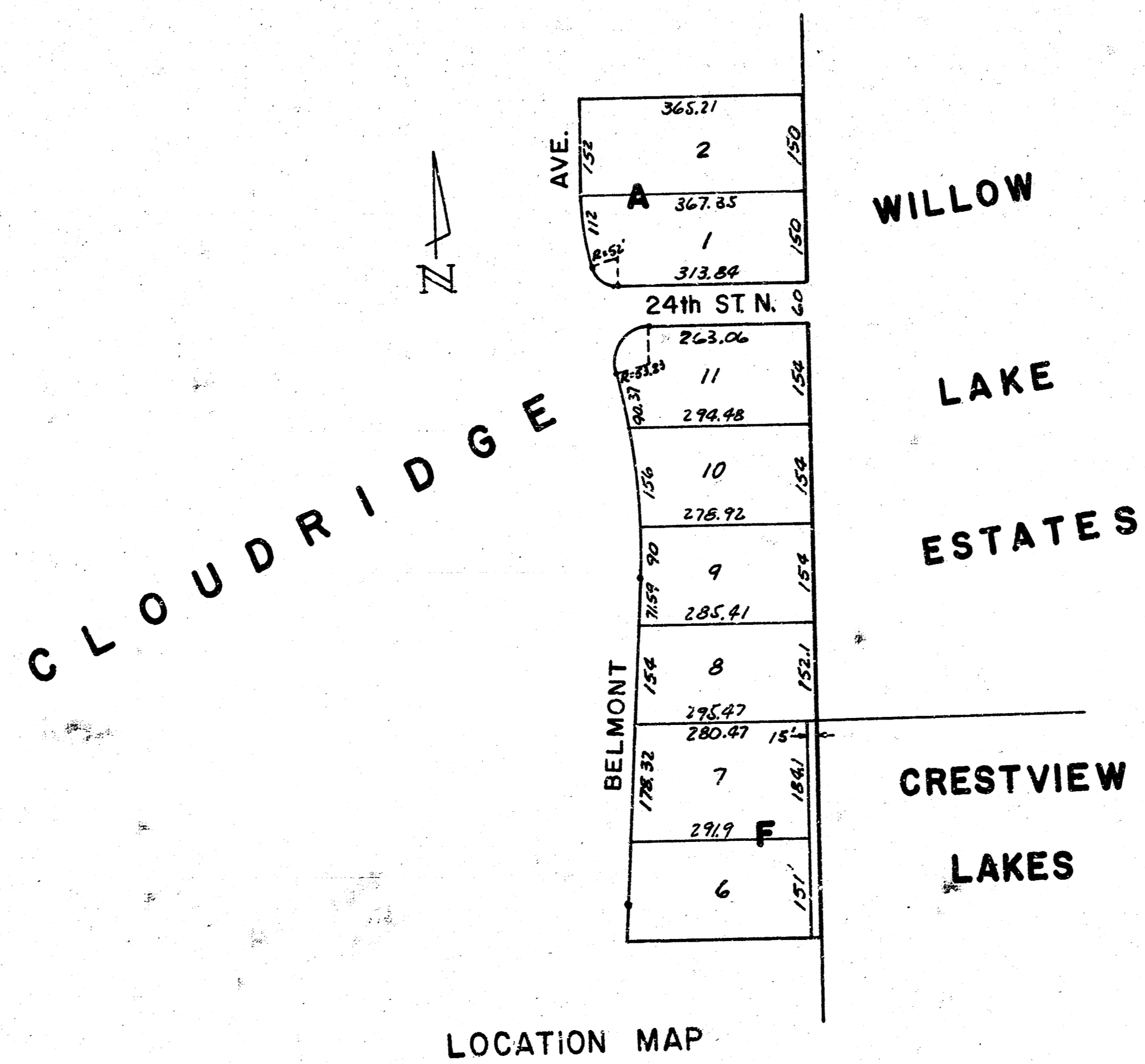


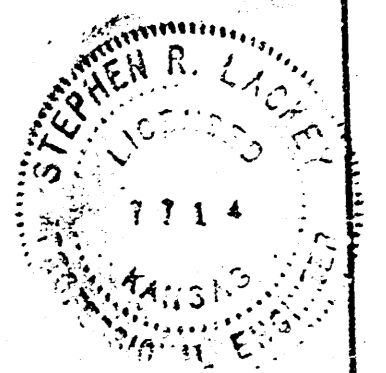
24th ST. NORTH  
E. L. BELMONT AVE. TO W. L. WILLOW LAKE ESTATES  
CITY OF WICHITA, KANSAS  
R. W. BRUGGEMAN DIRECTOR OF ENGINEERING/CITY ENGINEER

DATE:

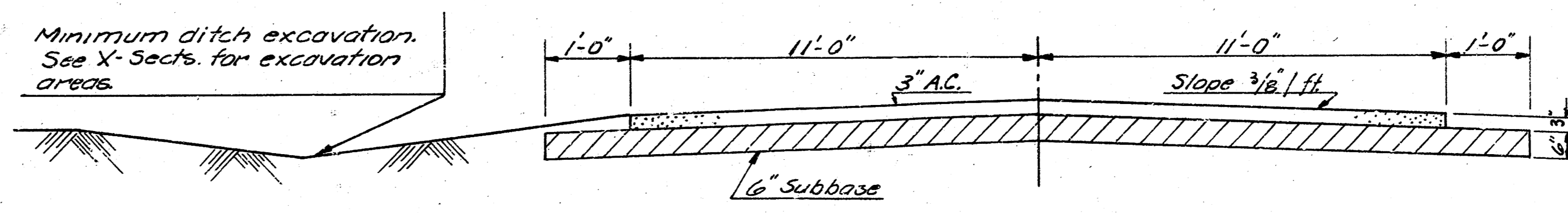
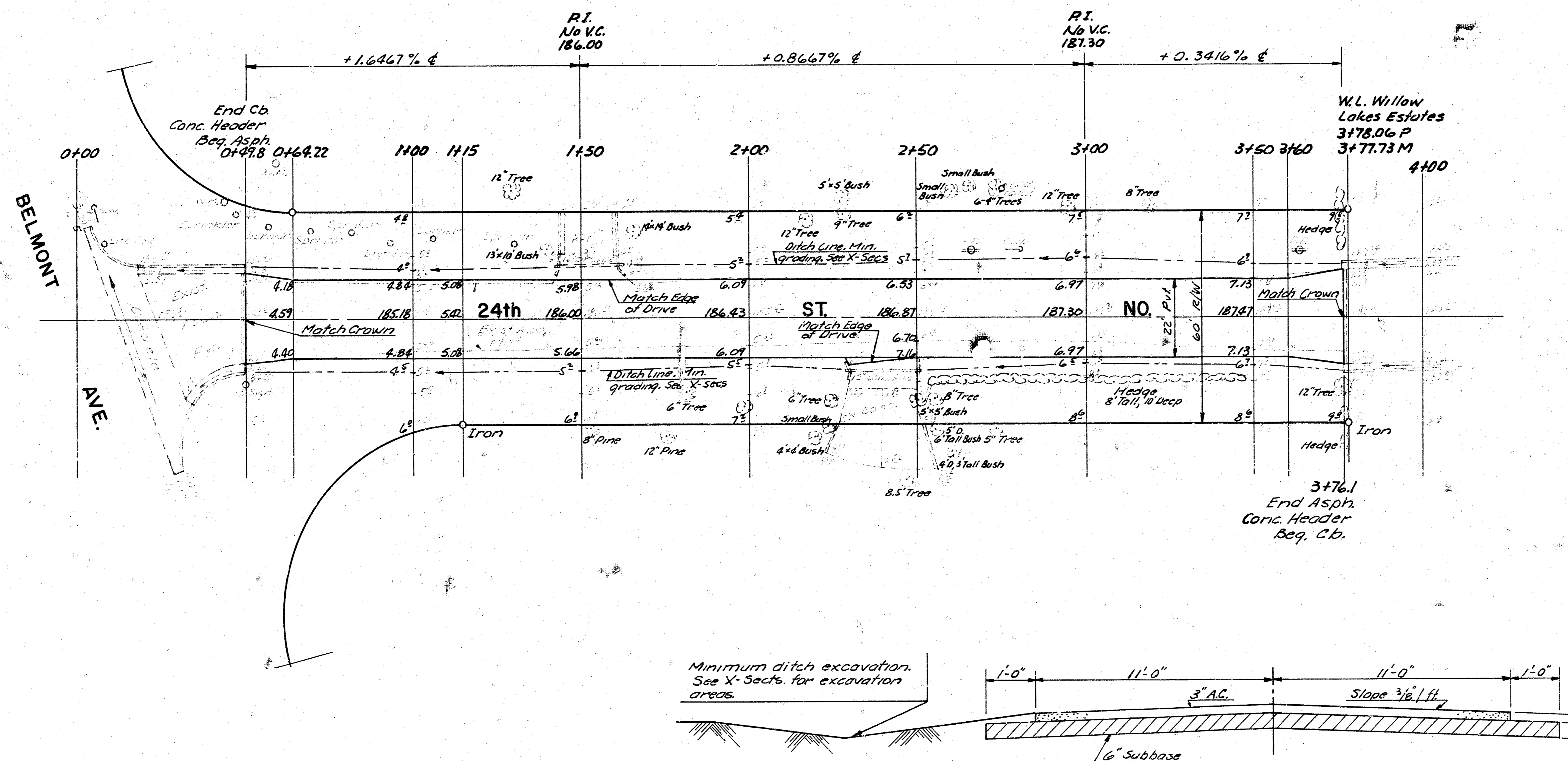
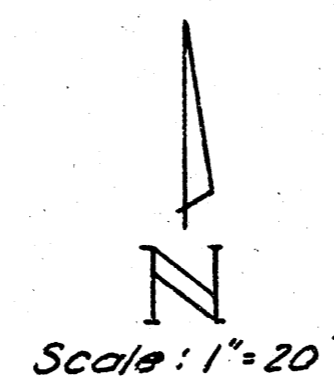
PROJ. NO. 472 76 245 80957 000 000 001



LOCATION MAP



B.M. 185.25 "d" Cut Top Cb. N.W. Cor. Pershing & 24th St. No. 5' W of W. Return on N. Side  
 B.M. 183.79 R.R. Spike in T.P. N.E. Cor. Dellrose & 24th St. No.  
 B.M. 184.06 "d" Cut Top Cb. S.W. Cor. Belmont & 24th St. No. @ S. Return



TYPICAL PAVING SECTION

Existing Asphalt Mat shall be pulverized, mixed with the top 6" of subbase, and compacted. After compaction of subbase, a 3" surface of Asphaltic Concrete shall be placed on the compacted material. Stabilization with lime or cement not required. Asphalt removal in excavated areas to be considered incidental to project.

24th ST.  
 E. L. BELMONT AVE. TO  
 W. L. WILLOW LAKE ESTATES

2/3

Survey & W. Plans 22 & C. Check Object