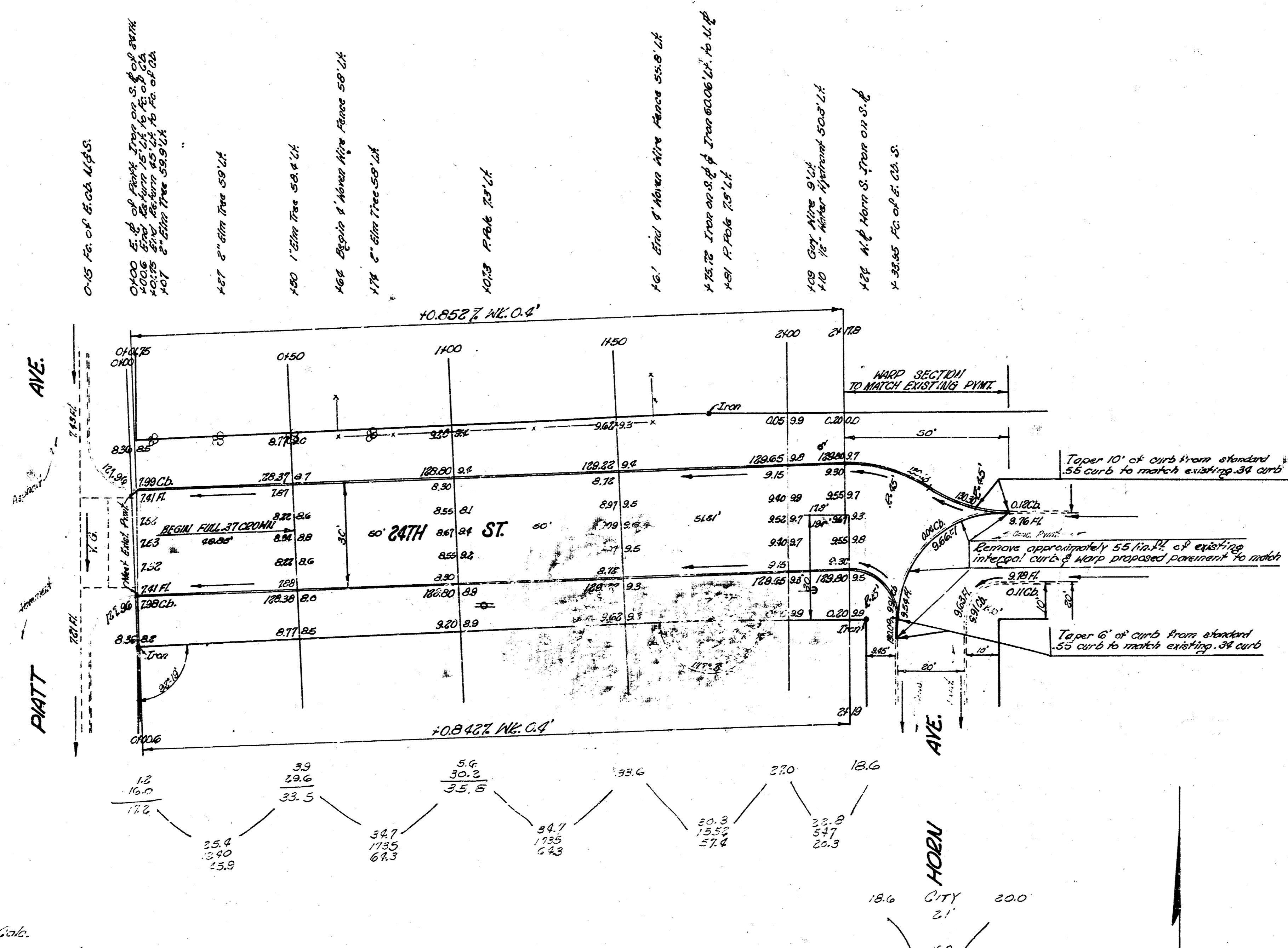


B.M. 123.39 S.E. cor. conc. open house # 2069 N. Platt
 B.M. 132.15 N. in MUELLER, Fire Hydrant S.E. cor. 24TH & Platt

Stationing on S. P.

Survey Done
 Plans Made
 Exc. Done
 Checked



Exc. Calc.

Prop. City	City
256.0	15.0
29.5	1.5
Total 277.9 curbs	Total 16.5 cu. yds.

24TH ST.
 E.L. PLATT AVE. TO W.L. HORN AVE.
 30' CONC. & C.C.

CITY OF WICHITA, KANS.

B.E. SMITH
 Feb. 1934

CITY ENGINEER
 Proc. No. C-13-363

