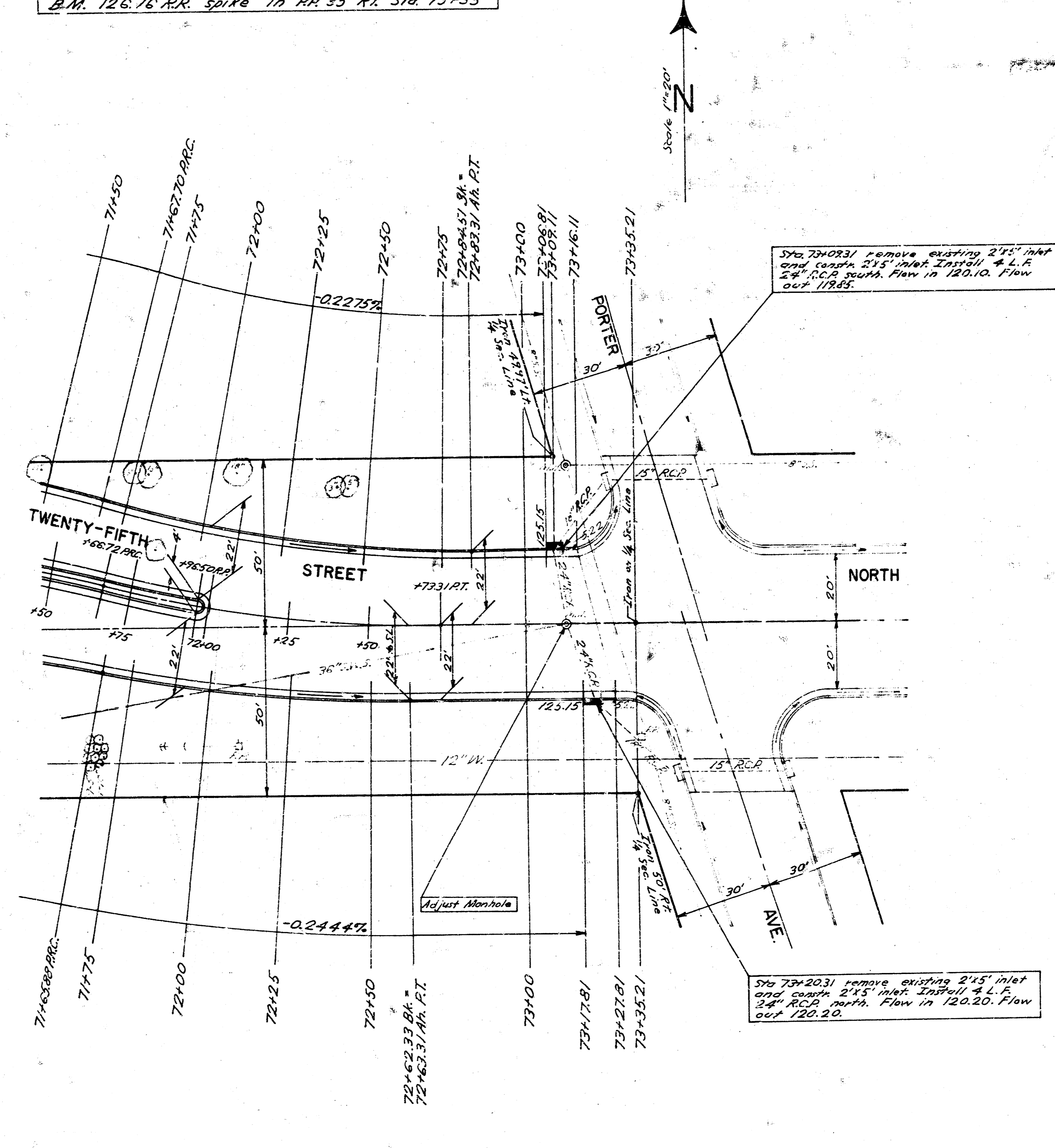
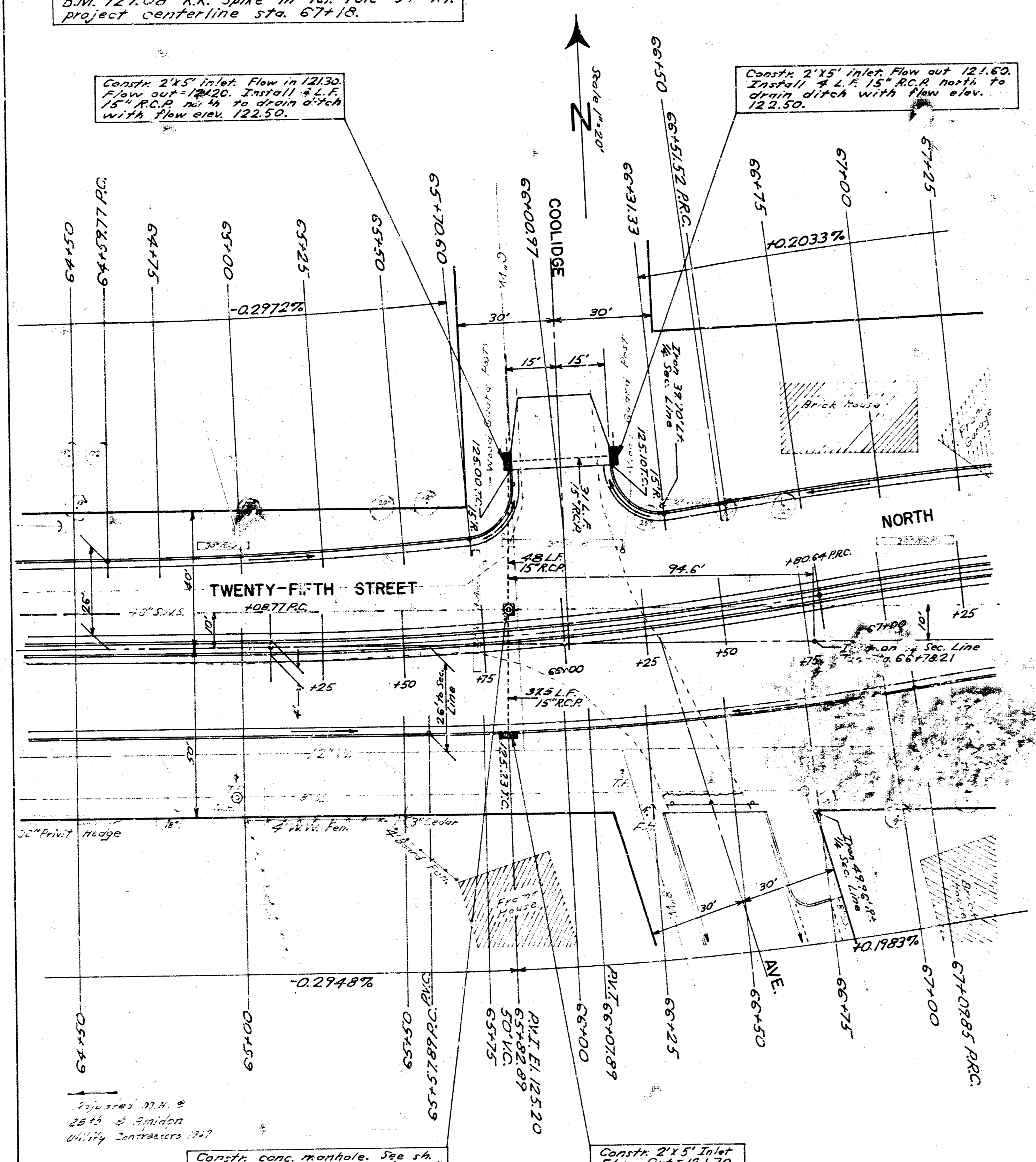


B.M. 127.08 RR Spike in Tel. Pole 57' RT.
Project centerline sta. 67+18.

B.M. 126.76 RR spike in RR 35' RT Sta 73+35

Shirley Glantz
E.L. Schaefer
Checked



Constr. conc. manhole. See s4.
#2 For details. Flow elev. 48'
Pipe = 10.250. Flow in 120.10.

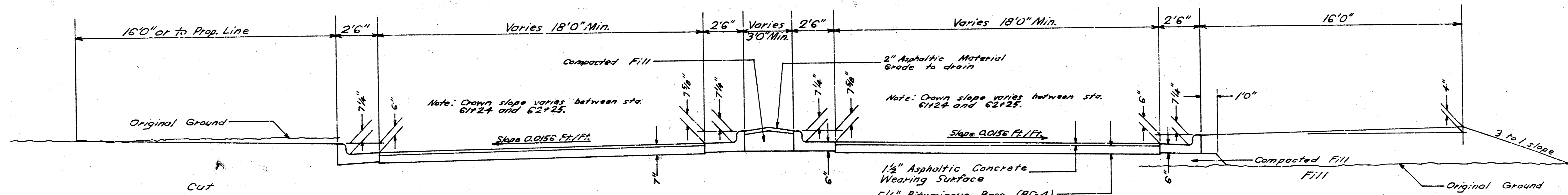
Note: Contractor to excavate manhole prior to laying pipe so that manhole may be relocated slightly to clear water line if necessary, since exact location of water line is not known.

INCIDENTAL DRAINAGE
TWENTY-FIFTH STREET NORTH
W.L. AMIDON AVE. TO E.L. PORTER AVE.
PROJ. NO. C 16-37

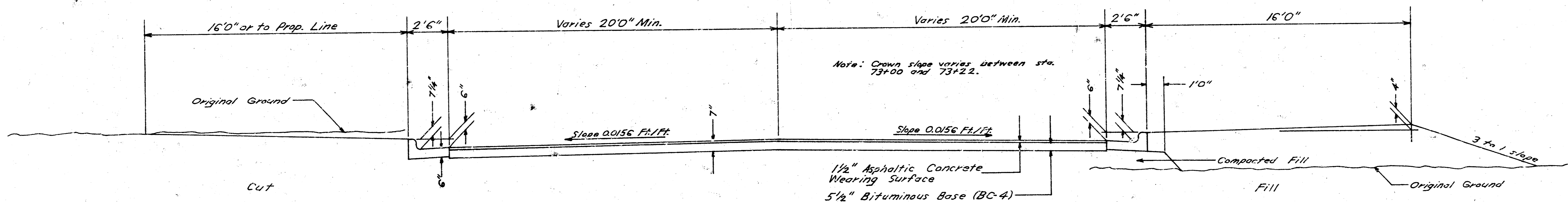
1/2

TWENTY-FIFTH STREET NORTH
E. L. AMIDON AVE. TO W. L. PORTER AVE.
PROJ. NO. C 16-37

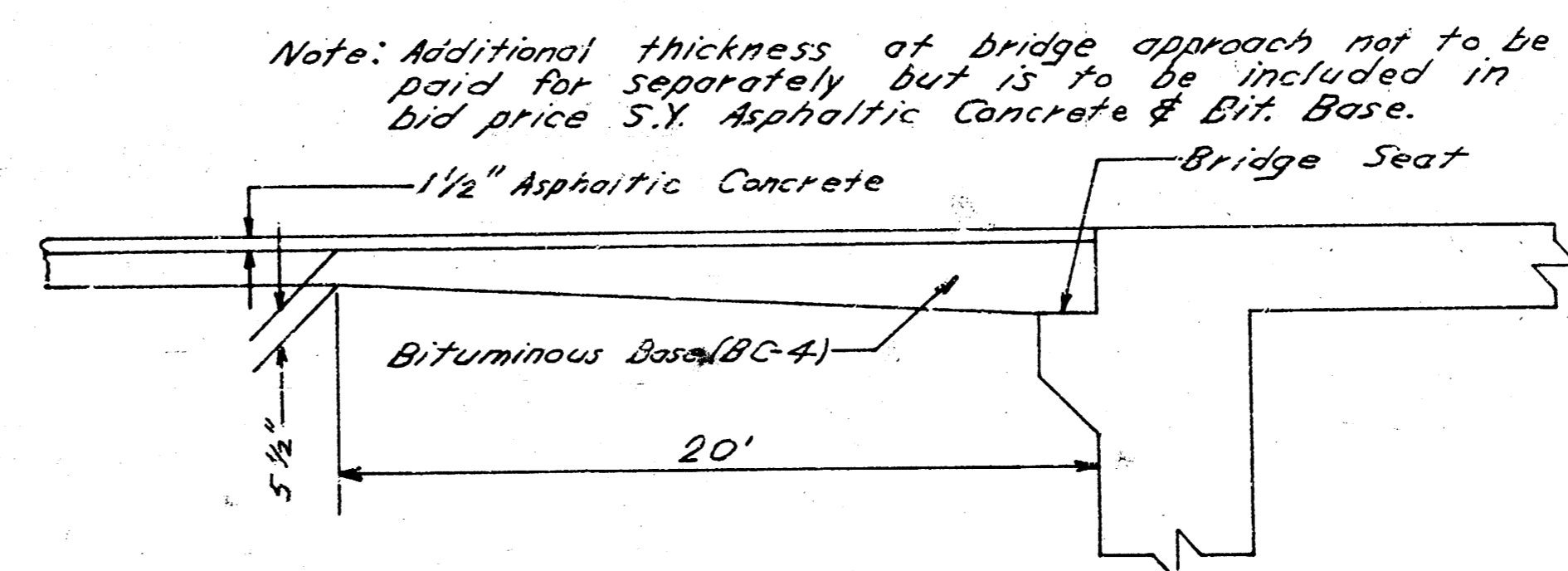
*Note: Bituminous base shall be placed in two lifts.
 First lift compacted thickness of 3" and
 second lift compacted thickness of 2 1/2".*



TYPICAL SECTION
STA. 61+24 TO STA. 71+96.5



TYPICAL SECTION
STA. 71+96.5 TO STA. 73+16

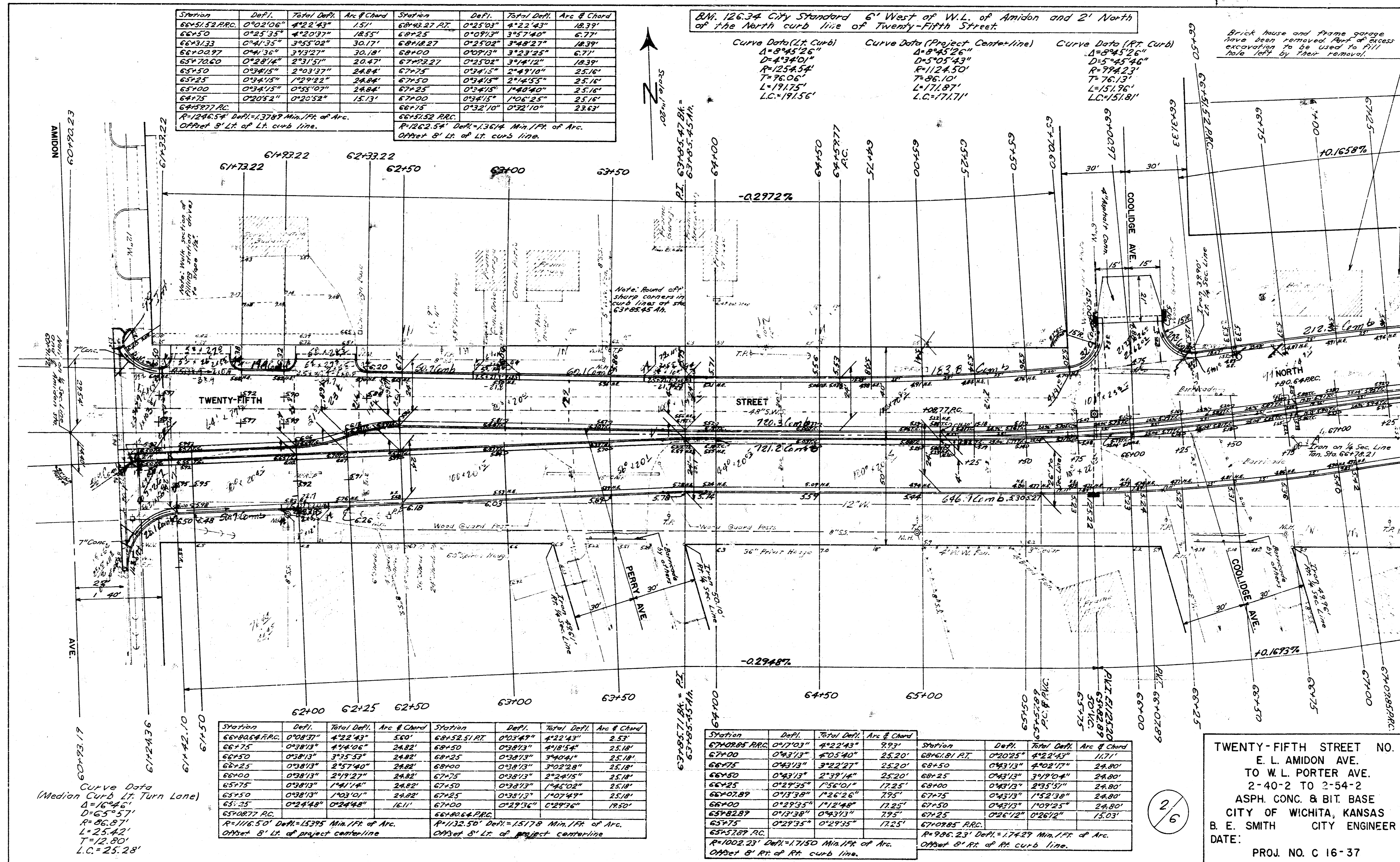


BRIDGE APPROACH DETAIL

Exc.	Comp. Fill
2470 C.Y.	264 C.Y.
+10% 247 C.Y.	26 C.Y.
2717 C.Y.	290 C.Y.

Surveyed by: [Signature]
 Checked by: [Signature]



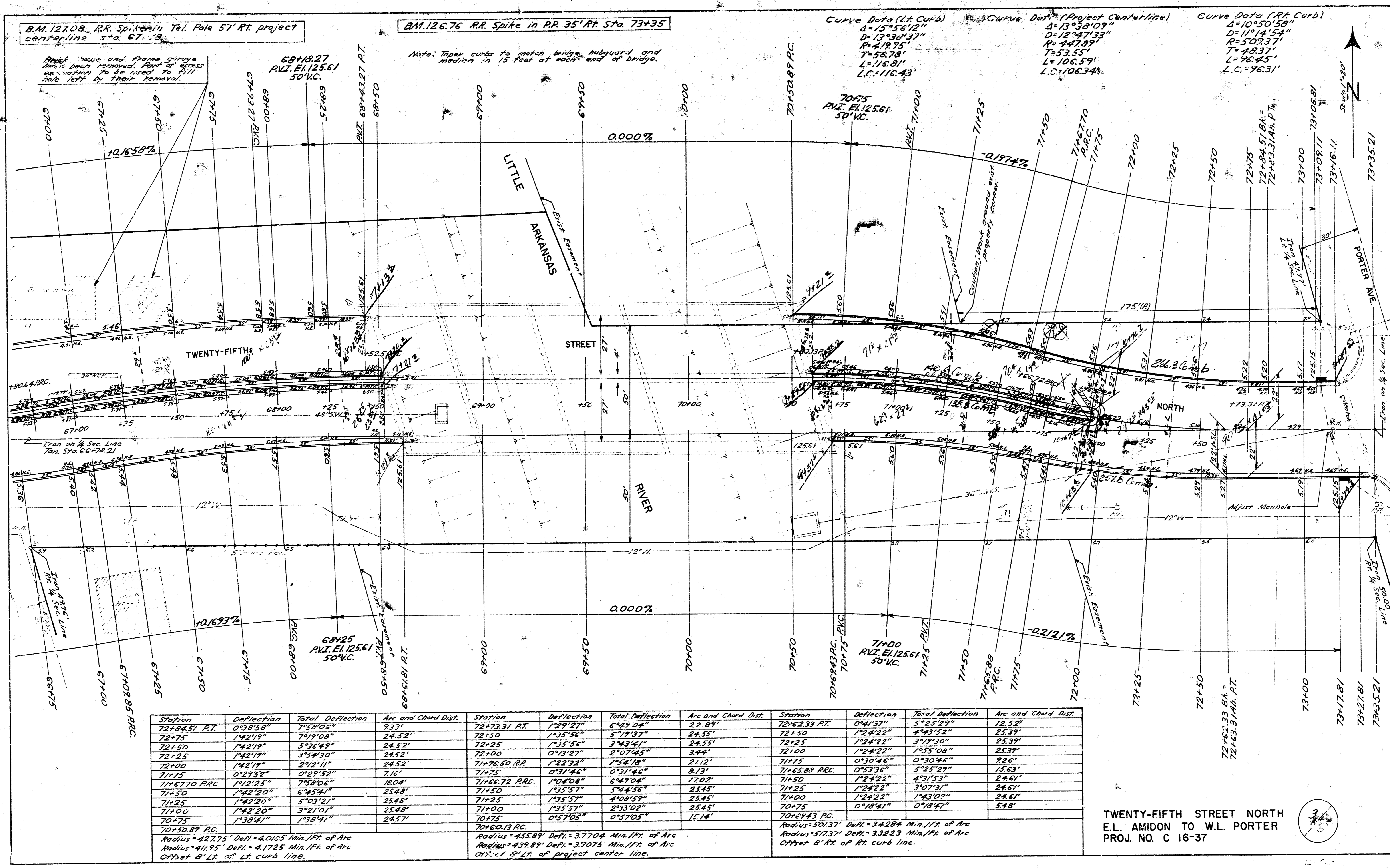


Station	Defl.	Total Defl.	Arc @ Chord	Station	Defl.	Total Defl.	Arc @ Chord
66+51.82 PRC	0°20'06"	4°22'43"	15.1'	66+48.27 P.C.	0°23'03"	4°22'43"	18.39'
66+50	0°25'35"	4°20'37"	18.55'	66+47.25	0°30'13"	3°55'40"	18.39'
66+49.33	0°41'35"	3°45'02"	30.17'	66+48.27	0°25'02"	3°48'27"	18.39'
66+48.97	0°41'36"	3°43'27"	30.18'	66+48.00	0°09'13"	3°23'25"	6.71'
66+48.00	0°28'14"	2°31'51"	20.47'	66+47.22	0°25'02"	3°41'12"	18.39'
66+47.22	0°34'15"	2°03'37"	24.84'	66+47.25	0°34'15"	2°49'10"	25.16'
66+47.25	0°34'15"	1°29'42"	24.84'	66+47.50	0°34'15"	2°45'55"	25.16'
66+47.00	0°34'15"	0°55'07"	24.84'	66+47.25	0°34'15"	1°48'48"	25.16'
66+47.25	0°20'52"	0°20'52"	15.13'	66+47.00	0°34'15"	1°02'25"	25.16'
66+47.27 P.C.				66+47.25	0°32'10"	0°32'10"	23.63'

Station	Defl.	Total Defl.	Arc @ Chord	Station	Defl.	Total Defl.	Arc @ Chord
66+48.51 PRC	0°08'37"	4°22'43"	5.00'	66+52.51 P.C.	0°08'37"	4°22'43"	2.53'
66+47.5	0°38'13"	4°14'06"	24.82'	66+50	0°38'13"	4°18'54"	25.18'
66+47.50	0°38'13"	3°35'33"	24.82'	66+49.25	0°38'13"	3°40'41"	25.18'
66+47.25	0°38'13"	2°57'40"	24.82'	66+48.00	0°38'13"	3°02'28"	25.18'
66+47.00	0°38'13"	2°19'27"	24.82'	66+47.25	0°38'13"	2°24'05"	25.18'
66+47.25	0°38'13"	1°41'14"	24.82'	66+47.50	0°38'13"	1°46'02"	25.18'
66+47.50	0°38'13"	1°03'10"	24.82'	66+47.25	0°38'13"	1°07'47"	25.18'
66+47.25	0°24'48"	0°24'48"	16.11'	66+47.00	0°24'36"	0°24'36"	19.50'

TWENTY-FIFTH STREET NO.
 E. L. AMIDON AVE.
 TO W.L. PORTER AVE.
 2-40-2 TO 2-54-2
 ASPH. CONC. & BIT. BASE
 CITY OF WICHITA, KANSAS
 B. E. SMITH CITY ENGINEER
 DATE: _____
 PROJ. NO. C 16-37

2/6



Station	Deflection	Total Deflection	Arc and Chord Dist.	Station	Deflection	Total Deflection	Arc and Chord Dist.	Station	Deflection	Total Deflection	Arc and Chord Dist.
72+00	0°38'58"	7°58'05"	22.33'	72+33.31 RT	1°29'27"	6°49'04"	22.89'	72+00 RT	0°41'37"	5°23'29"	12.52'
72+25	1°42'19"	7°19'08"	24.52'	72+50	1°35'56"	5°19'37"	24.55'	72+50	1°24'22"	4°43'52"	25.39'
72+50	1°42'19"	5°36'49"	24.52'	72+25	1°35'56"	3°43'41"	24.55'	72+25	1°24'22"	3°19'30"	25.39'
72+25	1°42'19"	3°54'30"	24.52'	72+00	0°38'58"	2°07'48"	3.44'	72+00	1°24'22"	1°55'08"	25.39'
72+00	1°42'19"	2°12'11"	24.52'	71+50	0°38'58"	0°31'46"	8.13'	71+75	0°30'46"	0°30'46"	22.6'
71+75	0°28'52"	0°28'52"	7.12'	71+90.50 RP	1°22'32"	1°54'18"	21.12'	71+50 PRC	0°53'36"	5°25'29"	15.63'
71+50	1°42'20"	6°43'41"	25.48'	71+60.72 PRC	1°04'08"	6°49'04"	17.02'	71+50	1°24'22"	4°31'53"	24.61'
71+25	1°42'20"	5°03'21"	25.48'	71+50	1°35'57"	5°44'56"	25.45'	71+25	1°24'22"	3°07'31"	24.61'
71+00	1°42'20"	3°21'01"	25.48'	71+25	1°35'57"	4°08'59"	25.45'	71+00	1°24'22"	1°43'09"	24.61'
70+75	1°38'41"	1°38'41"	24.57'	71+00	1°35'57"	2°33'02"	25.45'	70+75	0°48'47"	0°48'47"	54.8'
				70+75	0°57'05"	0°57'05"	15.14'				

TWENTY-FIFTH STREET NORTH
 E.L. AMDON TO W.L. PORTER
 PROJ. NO. C 16-37

