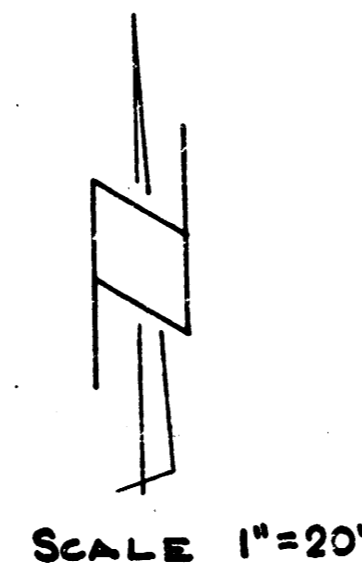
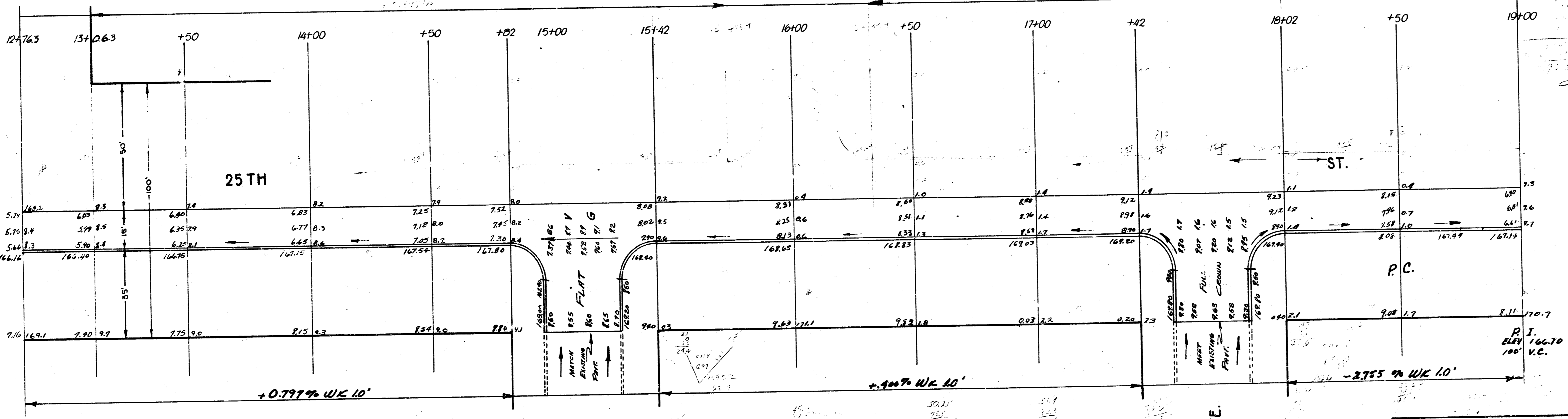


53 Y

B.M. 14459 Standard S.E. Cor. Grove & 25th
B.M. 16875 Knurled 60° Spike S.W. Side Cor. Post. @ 25th East & Volutsia North
B.M. 17937 Standard S.E. Cor. 25th & Hillside



VOLUTSIA AVE.



ERIE AVE.

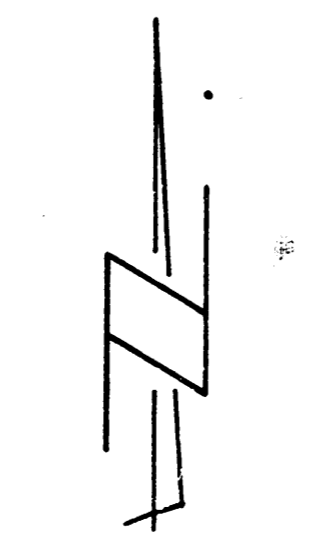
CHAUTAQUA AVE.

REVISED 9-15-52
25TH, S 1/2
& VOLUTSIA AVE. TO W. HILLSIDE AVE.
15' CONC. & C&G.
CITY OF WICHITA, KANSAS
L.K. WHITE CITY ENGINEER
SEPT. 1951 PROJ. NO. C 11-84

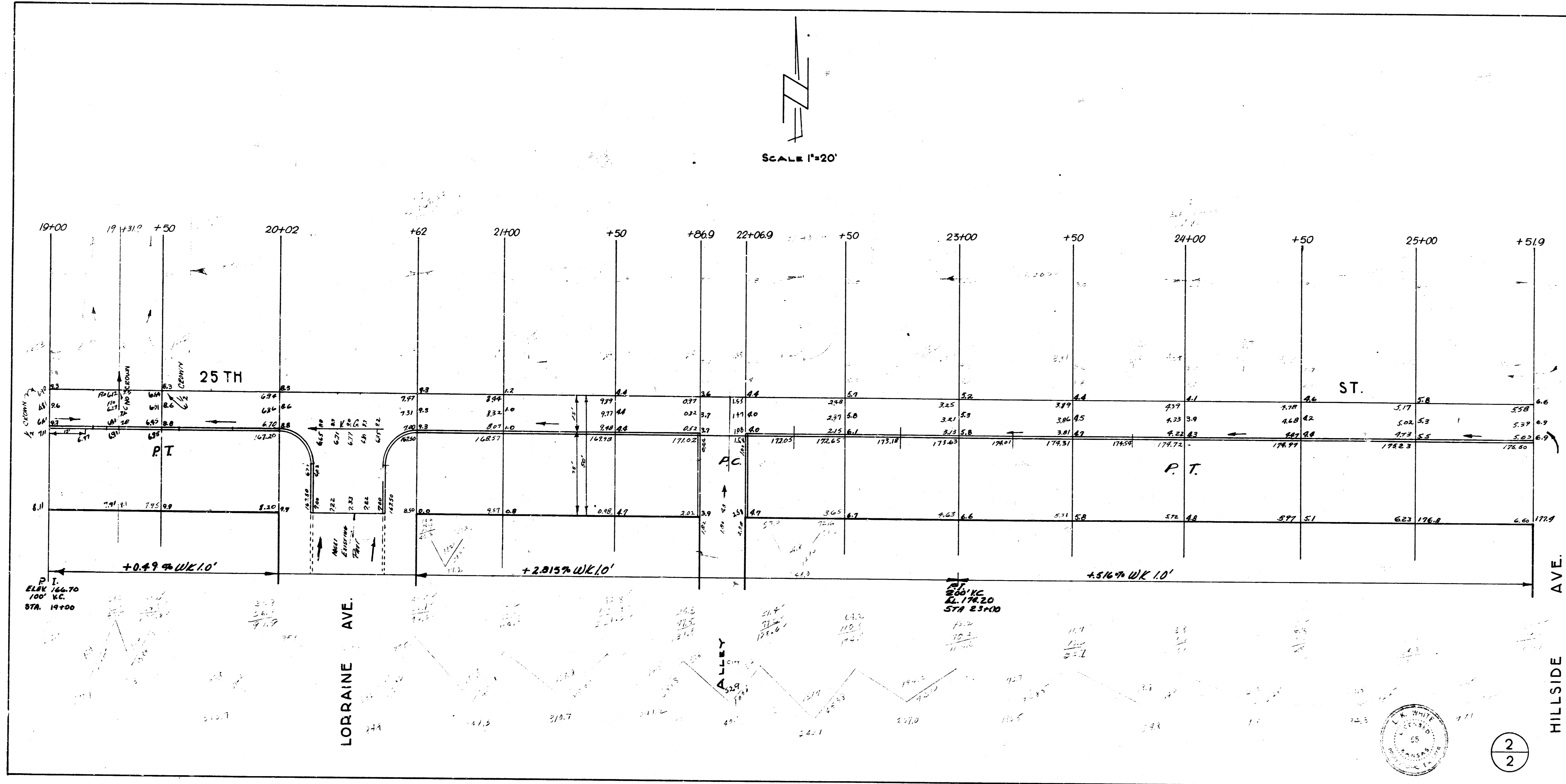


1/2

53 Y



SCALE 1"=20'



2
2