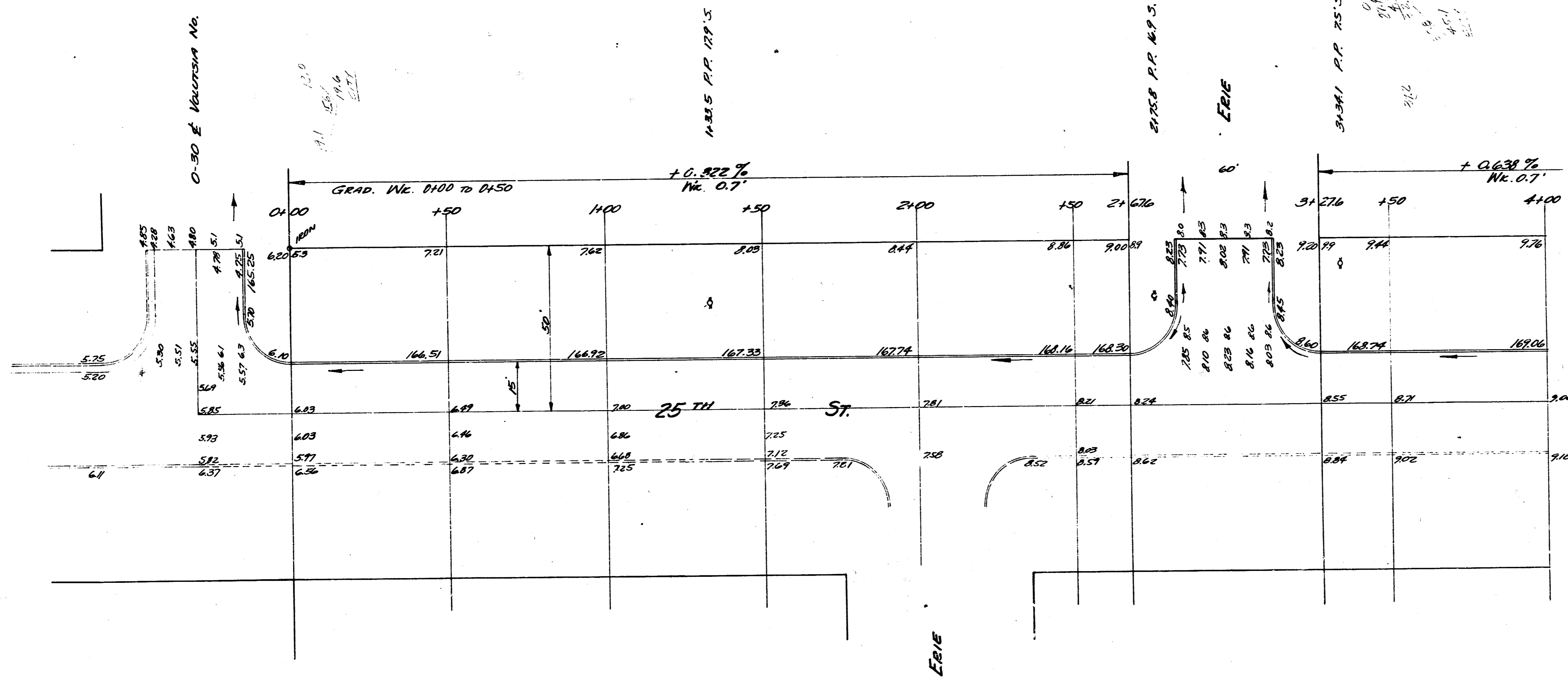
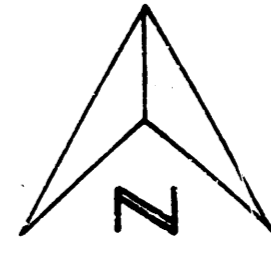
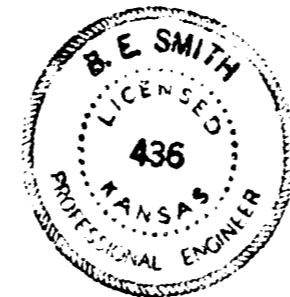


B.M. 164.86 "R" in EITHE on Co. N.L. 25TH & W.L. VOLUTSIA
 B.M. 168.59 "G" in GLOBE & W.L. PUGH BLDG. S.E. COR. ERIE & 25TH on W.L. N.
 B.M. 167.59 "G" in GLOBE & W.L. PUGH BLDG. S.W. COR. LORRAINE & 25TH on W.L. N.
 B.M. 174.71 "G" in S.P. 18TH N.S. P.P. 18TH N. & 15TH S. of N.E. COR. 25TH & LORRAINE
 B.M. 175.63 "G" in GLOBE S. CB. E. END PAVT. @ HILLSIDE.
 CHAINING E. ON N.P.L.



STREET
 PLAN
 1934

5.0
 1.8
 0.7
 1.1
 1.1

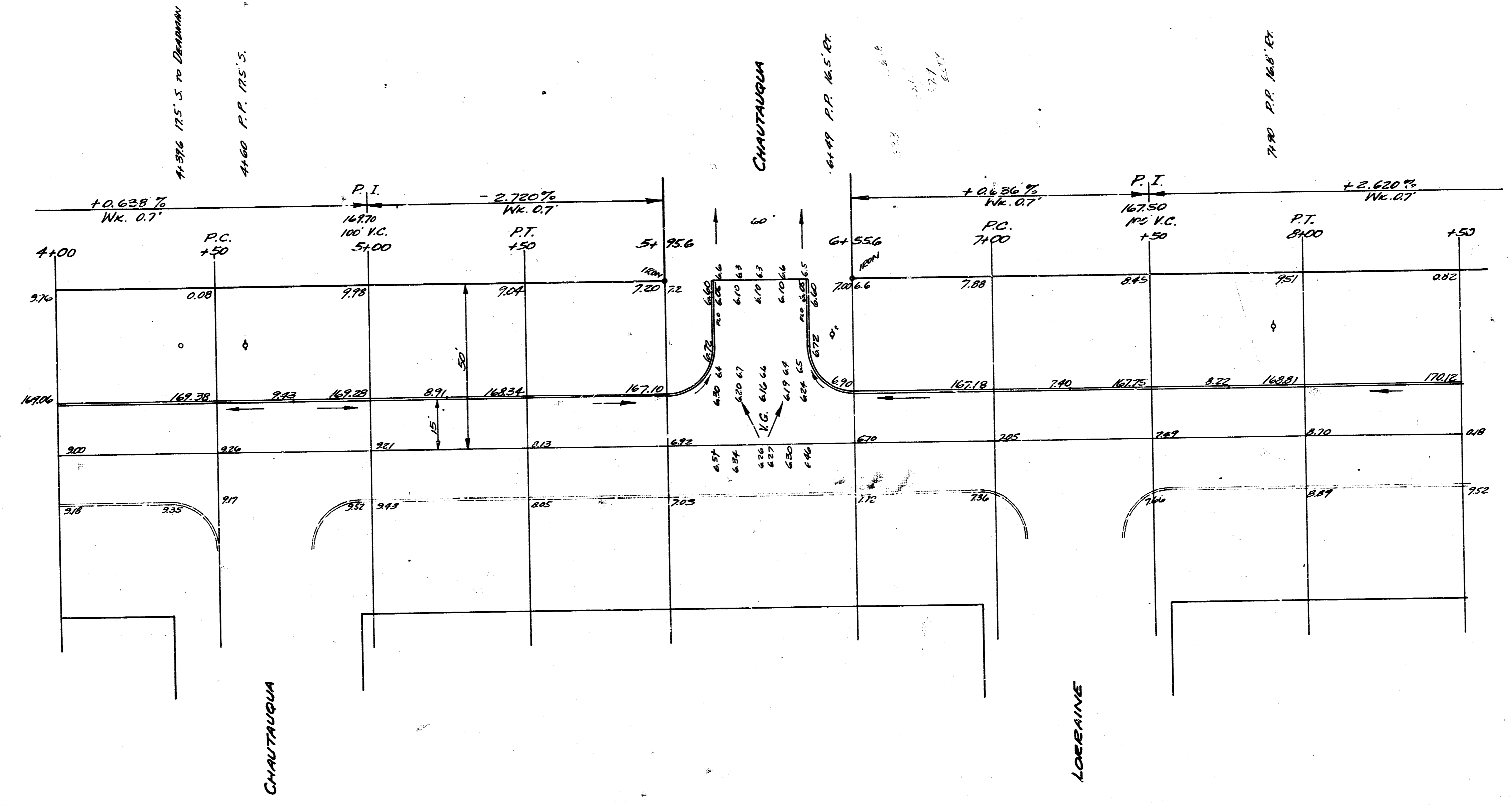
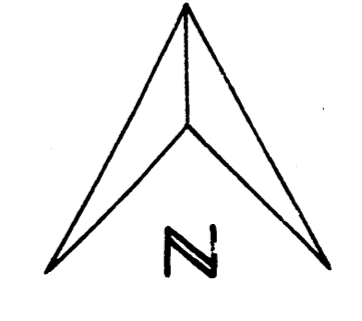


TOTAL E.P.C.
 1058.9
 410.7
 174.2

1/5

25TH ST., N 1/2
 @ VOLUTSIA TO W.L. HILLSIDE
 15' CONC. & CB.
 CITY OF WICHITA KANSAS
 B.E. SMITH CITY ENGINEER
 MARCH 1934 PROJ. No. C 14-81

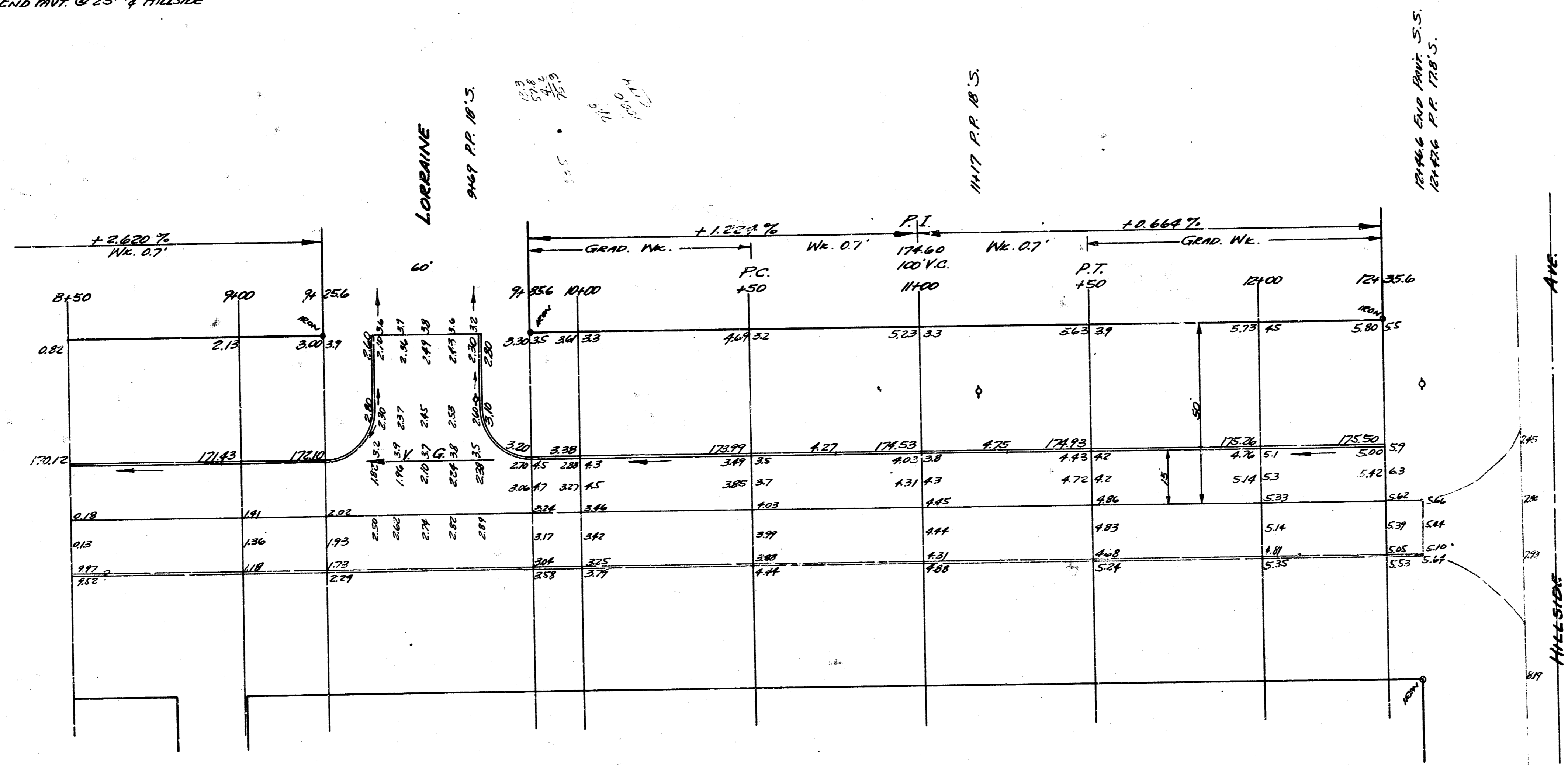
B.M. 16239 "G" IN GLOBE & WK. ON PUSHBLOE
 S.W. COR. LORRAINE & 25TH, WK. GANG N.
 CHAINING E. ON N.P.L.



25TH ST.

2
5

B.M. 174.71 20' S. of N.S. P.P. 18 W. & 15' S. of NE. Cor. 25th & LORRAINE
 B.M. 175.63 "G" in GLOBE S. Cor. E. End PAVT. @ 25th & HILLSIDE
 STA. ON N.P.L.



46.2	28.3	27.7	15.6	0	0	0	0	2.0
	28.3	27.7	15.6	0	0	0	0	2.0
	28.3	27.7	15.6	0	0	0	0	2.0
	28.3	27.7	15.6	0	0	0	0	2.0
	28.3	27.7	15.6	0	0	0	0	2.0
	28.3	27.7	15.6	0	0	0	0	2.0
	28.3	27.7	15.6	0	0	0	0	2.0
	28.3	27.7	15.6	0	0	0	0	2.0
	28.3	27.7	15.6	0	0	0	0	2.0
	28.3	27.7	15.6	0	0	0	0	2.0

25th ST.

3/5