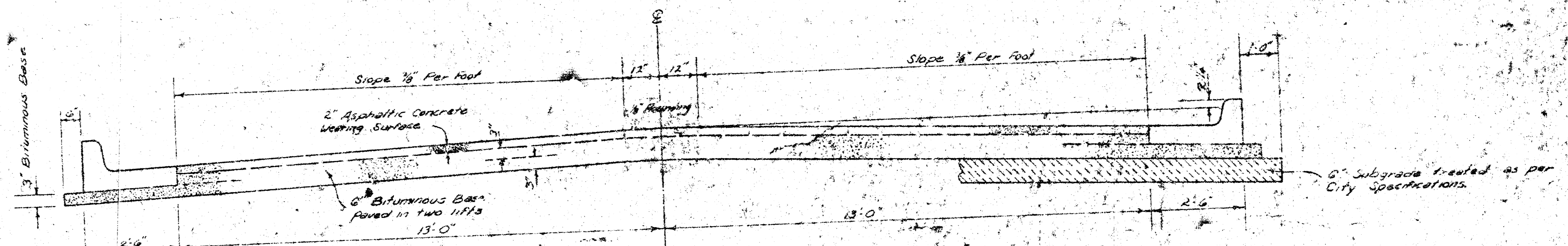


**Reconstruction of 25th st. North**  
**from Wellesley Ave to EL Bluff Ave**  
**Proj. no. 472-76-245-80691-000-000-001**



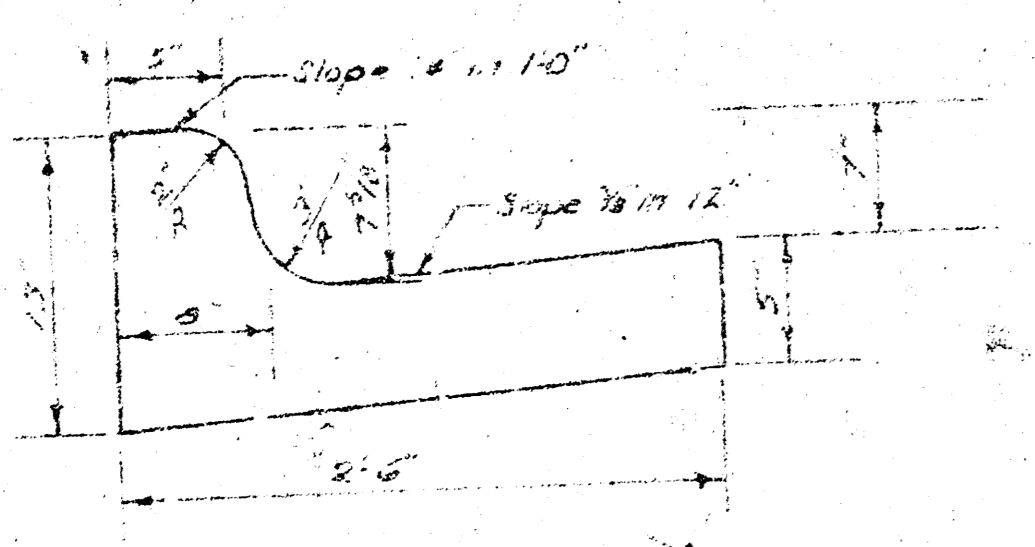
**TYPICAL SECTION**

**3' ASPHALTIC CONCRETE PAVEMENT WITH BITUMINOUS BASE**

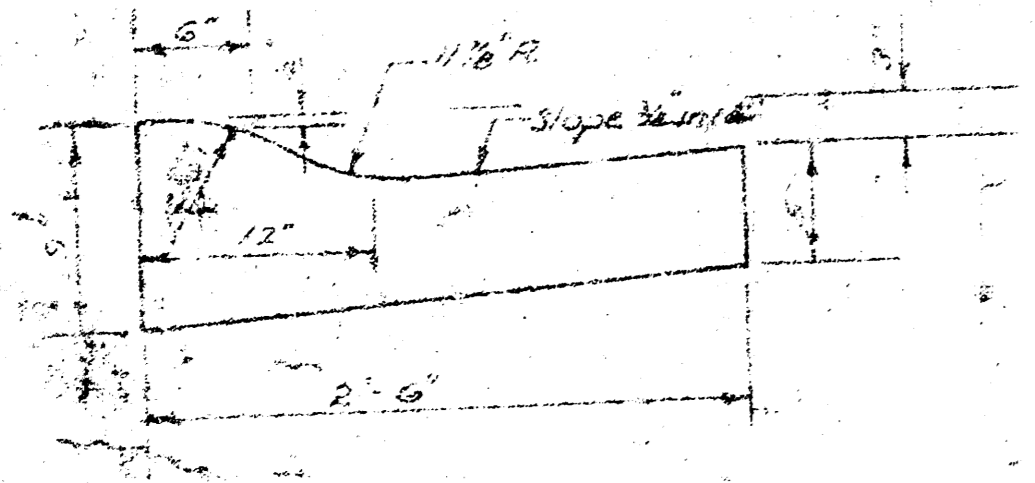
A TACK COAT OF EMULSIFIED ASPHALT (SS-1H) SHALL BE APPLIED AT AN APPROXIMATE RATE OF 0.05 GALLONS PER SQ YD BETWEEN LIFTS OF ASPHALTIC MATERIALS WHEN ORDERED BY THE ENGINEER. TACK COAT WILL NOT BE PAID FOR DIRECTLY AND SHALL BE CONSIDERED AS SUBSIDIARY TO PRICE BID FOR ASPHALTIC PAVEMENT. BITUMINOUS BASE AND ASPHALTIC CONCRETE WEARING SURFACE SHALL BE PLACED WITH A LAYDOWN MACHINE HAVING AUTOMATIC ELECTRONIC CONTROLS FOR CROWN AND GRADE. CONSTRUCTION JOINTS IN EACH LIFT SHALL BE STAGGERED A MINIMUM DISTANCE OF 1' WITH JOINTS IN PRECEDING LIFTS AND SUCH THAT A JOINT WILL BE CONSTRUCTED ON THE PAVEMENT CENTERLINE IN THE TOP LIFT.

*The A.C. pavement between the Comb. Curb & gutter shall be paid as 2 1/2" A.C. Pavement (6 Bituminous Base). The Bituminous Base under the Comb. Curb & gutter shall be paid as 3" Bituminous Base.*

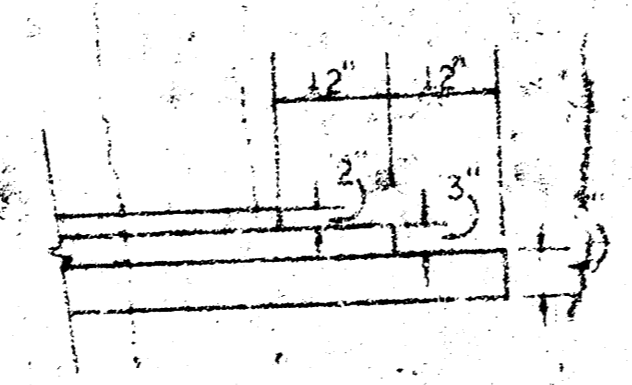
**COMBINED CURB & GUTTER**



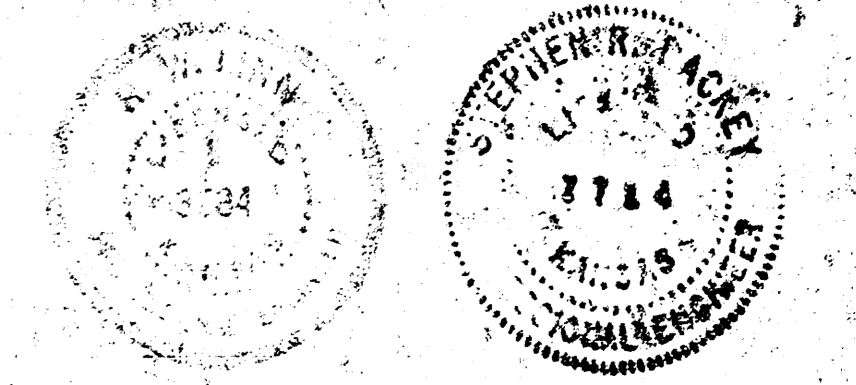
**ROLL TYPE CURB & GUTTER**



**DETAIL OF TRANSVERSE CONSTRUCTION JOINTS**



TRANSVERSE CONSTRUCTION JOINTS SHALL BE CONSTRUCTED IN FLEXIBLE BASE PAVEMENTS AT LOCATIONS WHERE PAVEMENT TEMPORARILY ENDS TO FACILITATE FUTURE PAVEMENT CONSTRUCTION AS SHOWN BY DETAIL. THE COST OF CONSTRUCTING THE TRANSVERSE CONSTRUCTION JOINTS SHALL NOT BE MEASURED OR PAID FOR DIRECTLY BUT SHALL BE INCLUDED IN THE BID PRICE FOR SQUARE YARDS OF ASPHALTIC CONCRETE PAVEMENT.



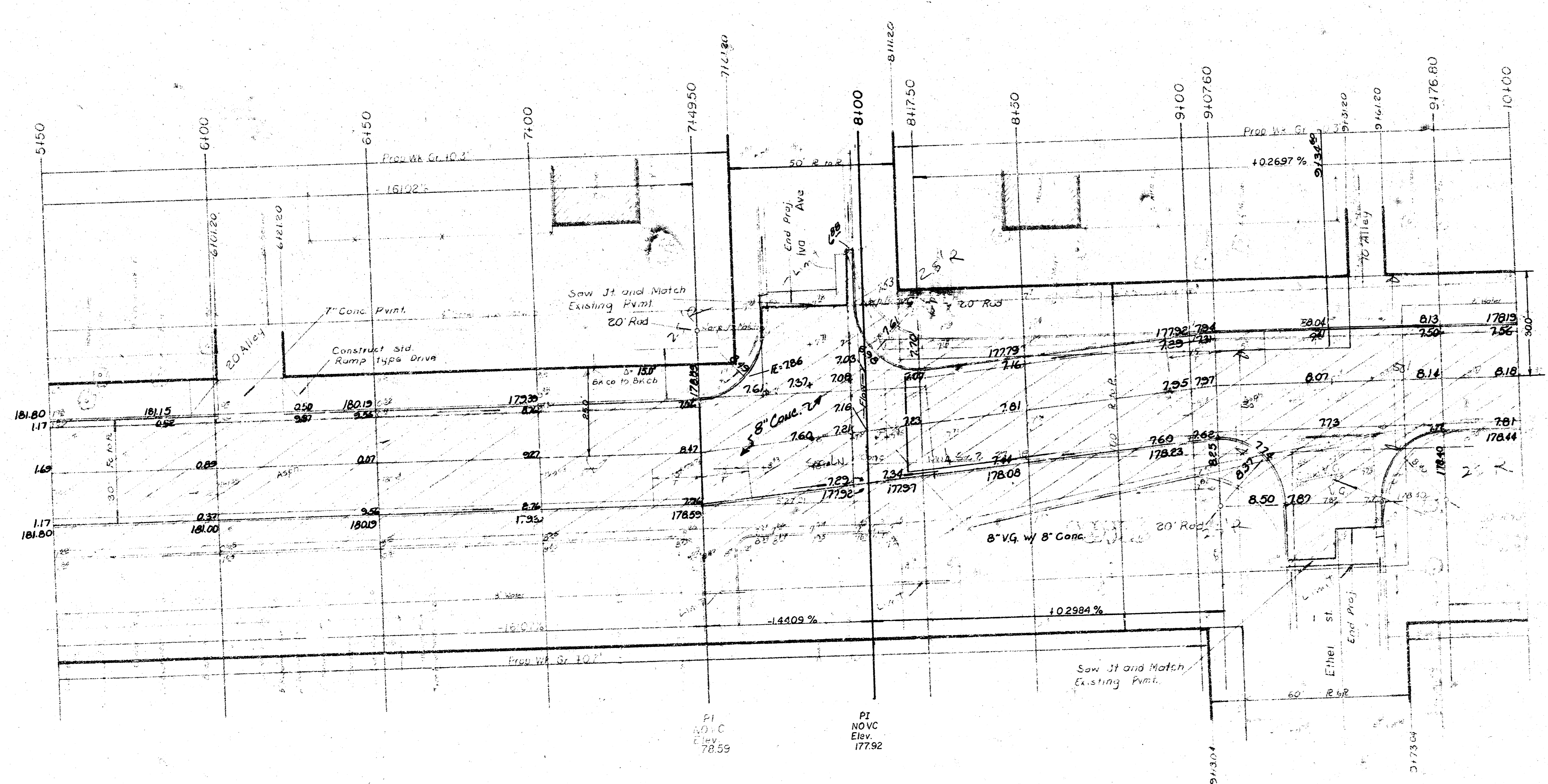
**CITY OF WICHITA, KANSAS**  
 DEPARTMENT OF PUBLIC WORKS — ENGINEERING  
 R. W. LINN CITY ENGINEER

DATE \_\_\_\_\_ PROJ. NO. 472-76-245-80691-000-000-001

**FILMED FROM THE BEST AVAILABLE COPY .....**

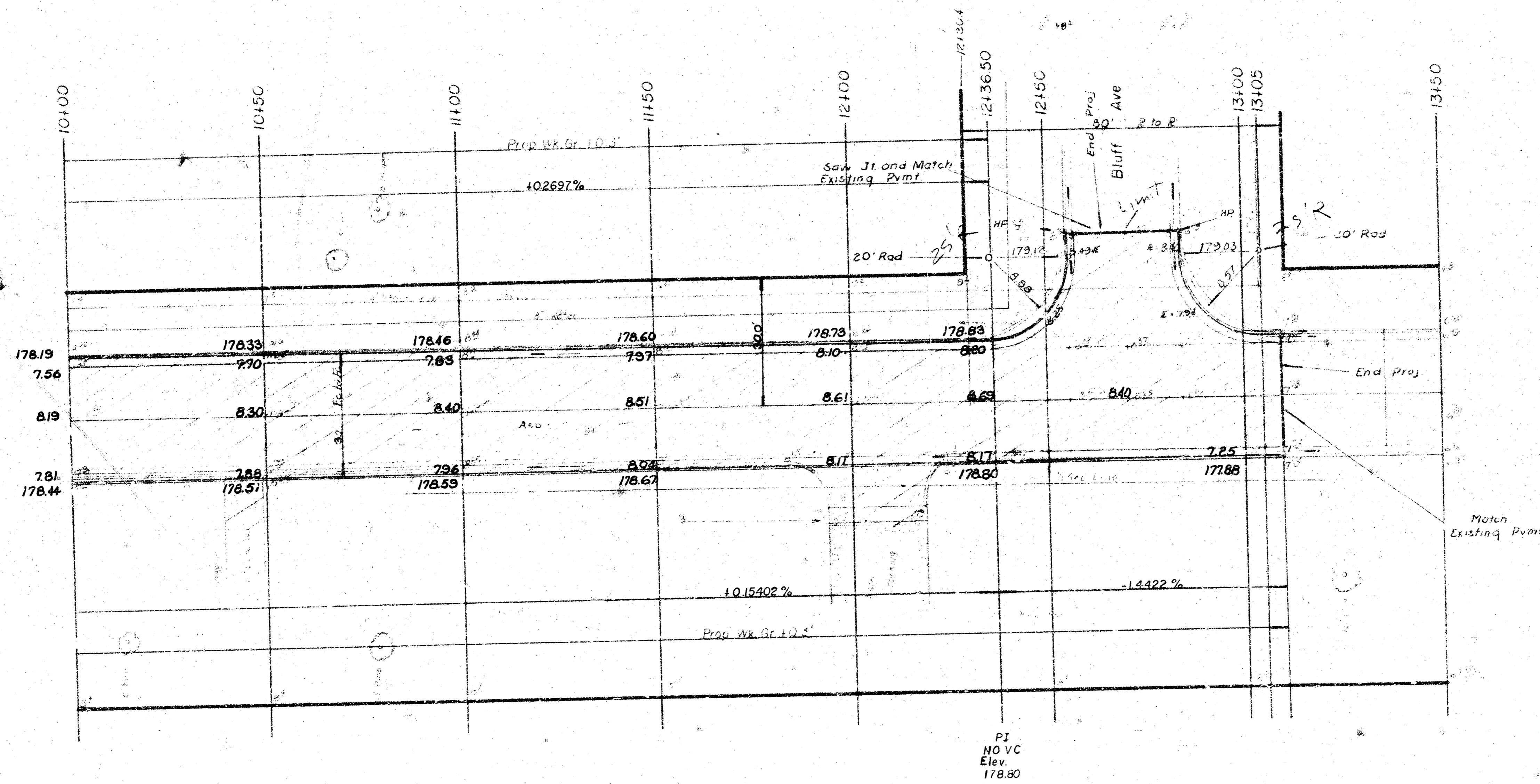


Vertical  
Planing



FILMED FROM THE BEST AVAILABLE COPY .....

50' x 50' Plan  
Yours Truly  
H. H. H.



FILMED FROM THE BEST AVAILABLE COPY.....