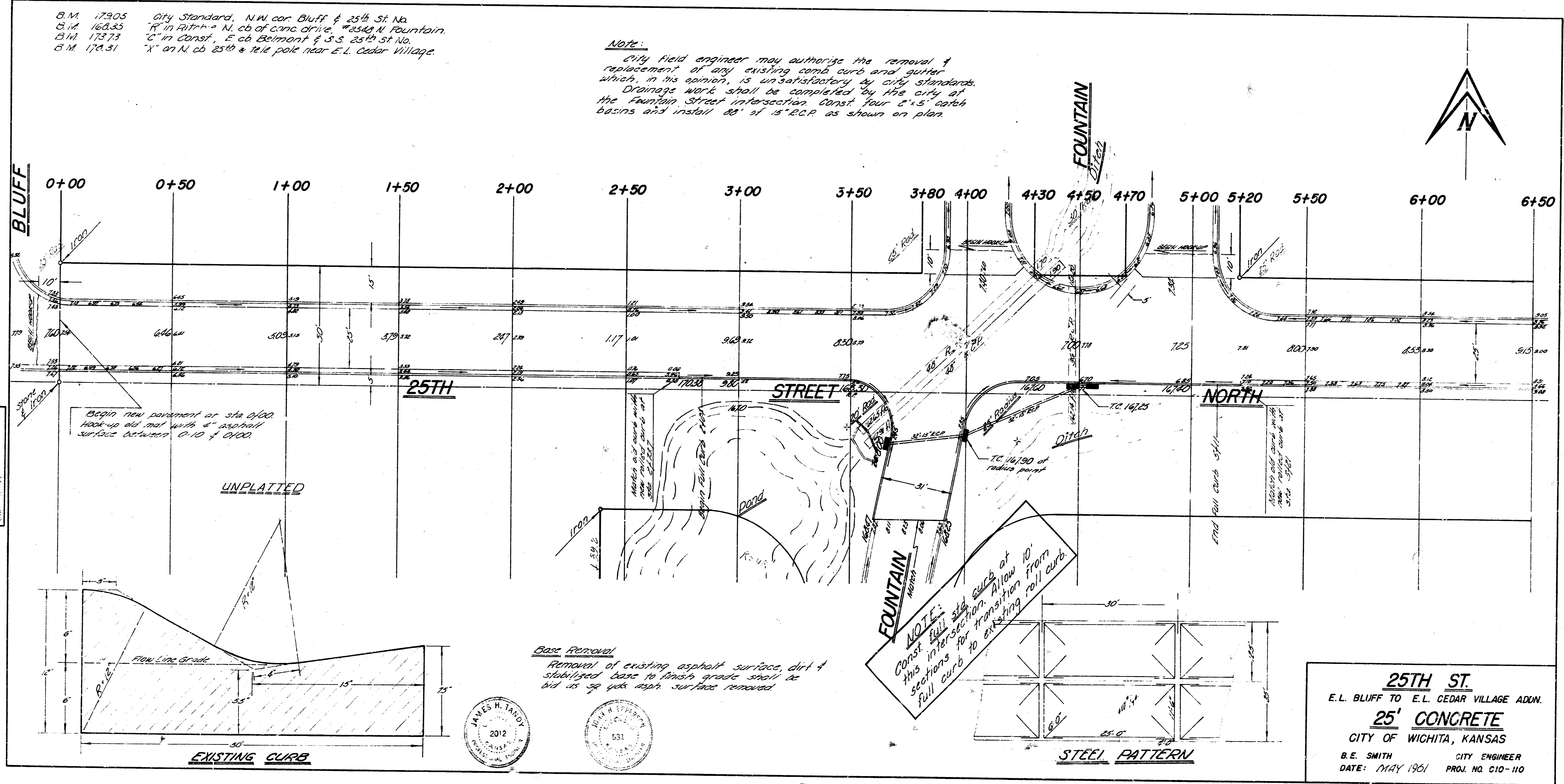
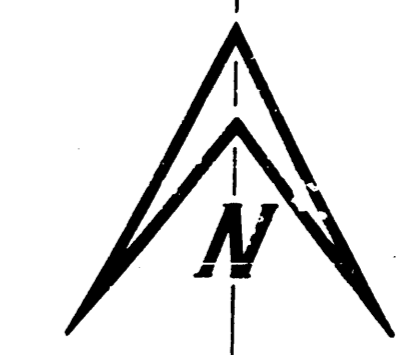


B.M. 17905 City Standard, N.W. cor. Bluff & 25th St. No.
 B.M. 16035 "R" in F.I.R.M. N. cb of conc. drive, 25th & N. Fountain.
 B.M. 17373 "C" in Const., E. cb Belmont & S.S. 25th St. No.
 B.M. 17031 "X" on N. cb 25th & Tel. pole near E.L. Cedar Village.

Note:
 City field engineer may authorize the removal & replacement of any existing curb and gutter which, in his opinion, is unsatisfactory by city standards. Drainage work shall be completed by the city at the Fountain Street intersection. Const. four 2'x5' catch basins and install 60" of 18" R.C.P. as shown on plan.

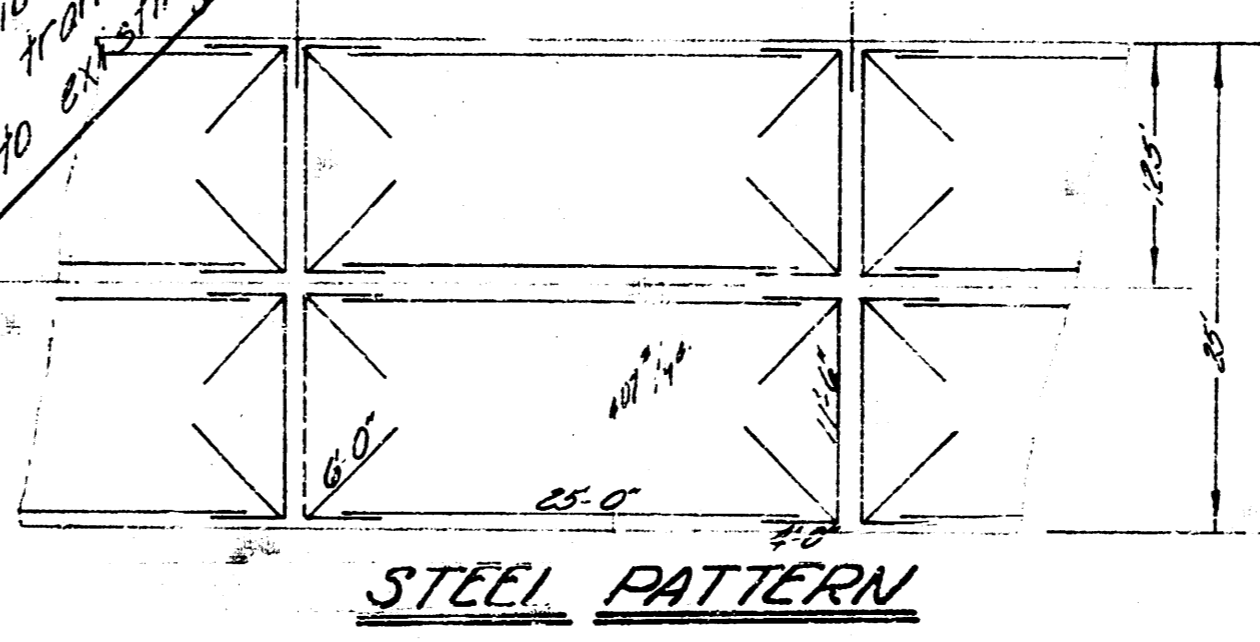
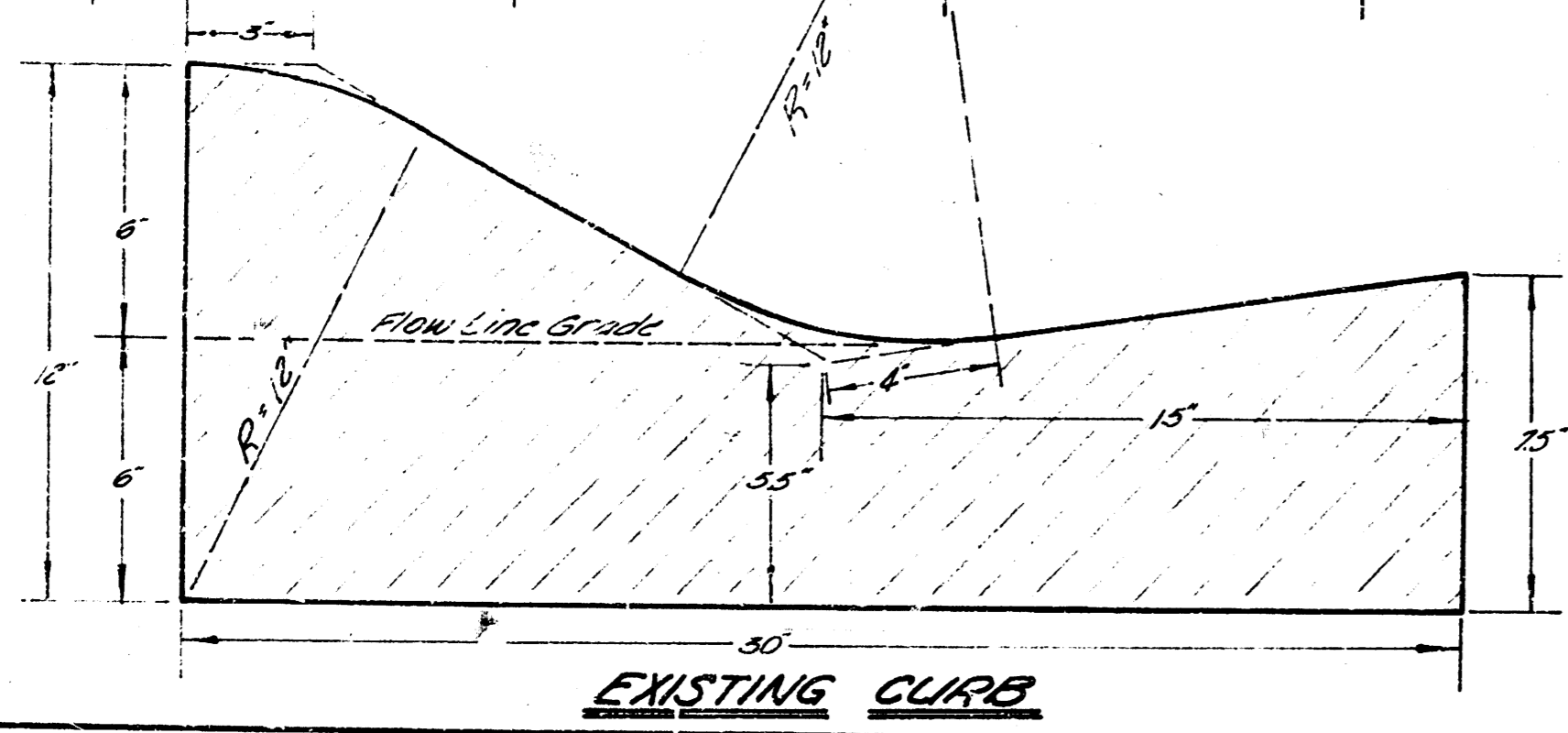


Begin new pavement at sta 0+00. Hook-up old mat with 4" asphalt surface between 0+10 & 0+00.

UNPLATTED

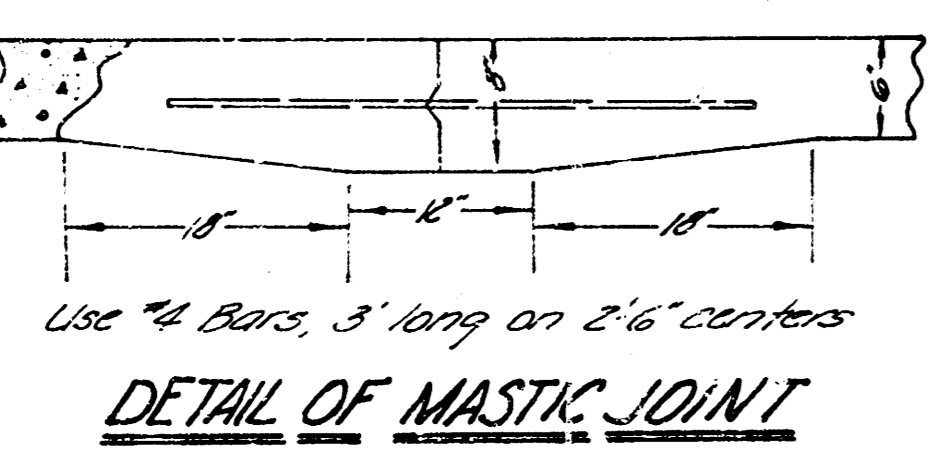
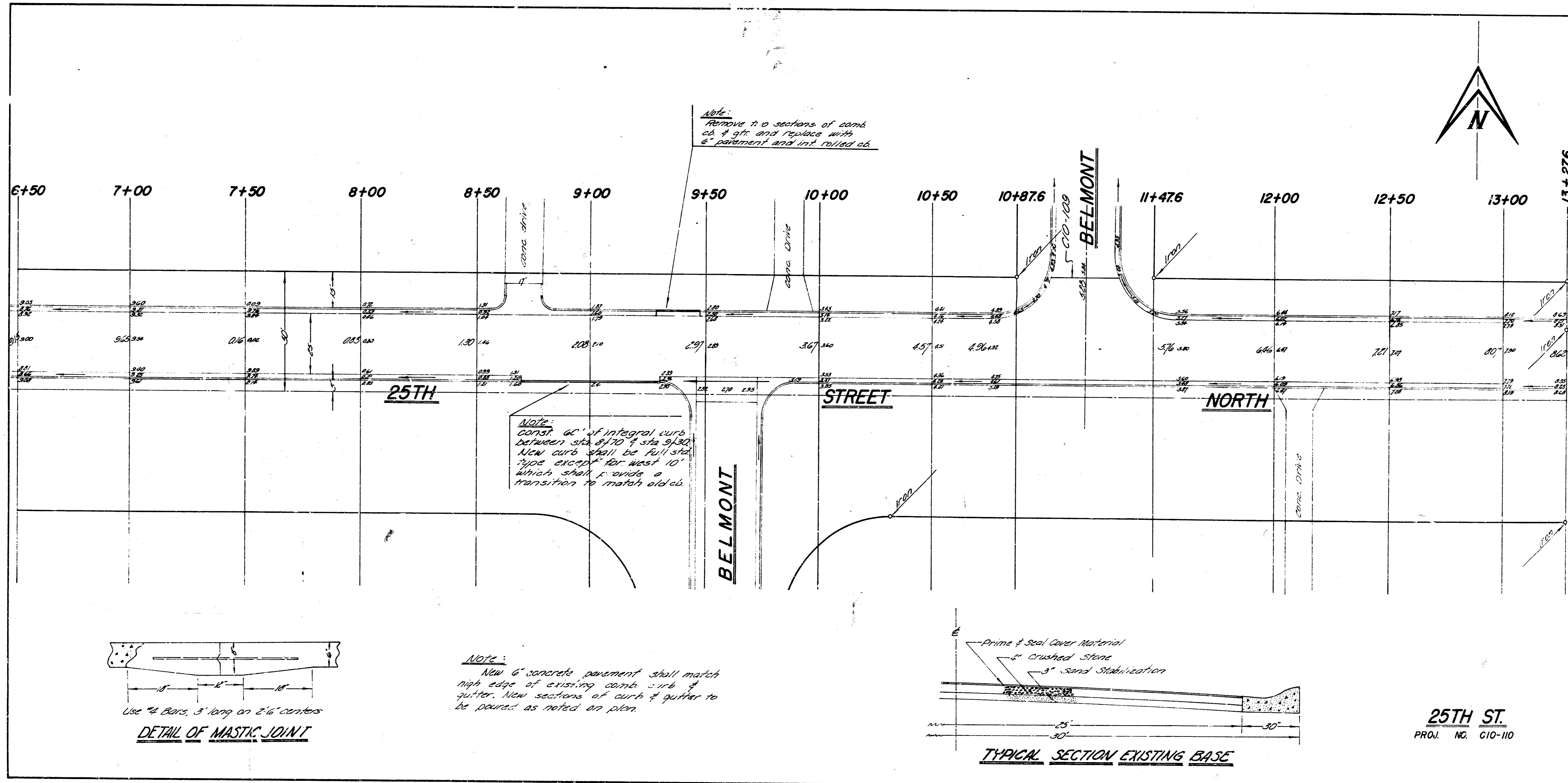
Base Removal
 Removal of existing asphalt surface, dirt & stabilized base to finish grade shall be bid as 90% ash surface removed.

NOTE:
 Const. full 24" curb at this intersection. Allow 10' sections for transition from full curb to existing roll curb.

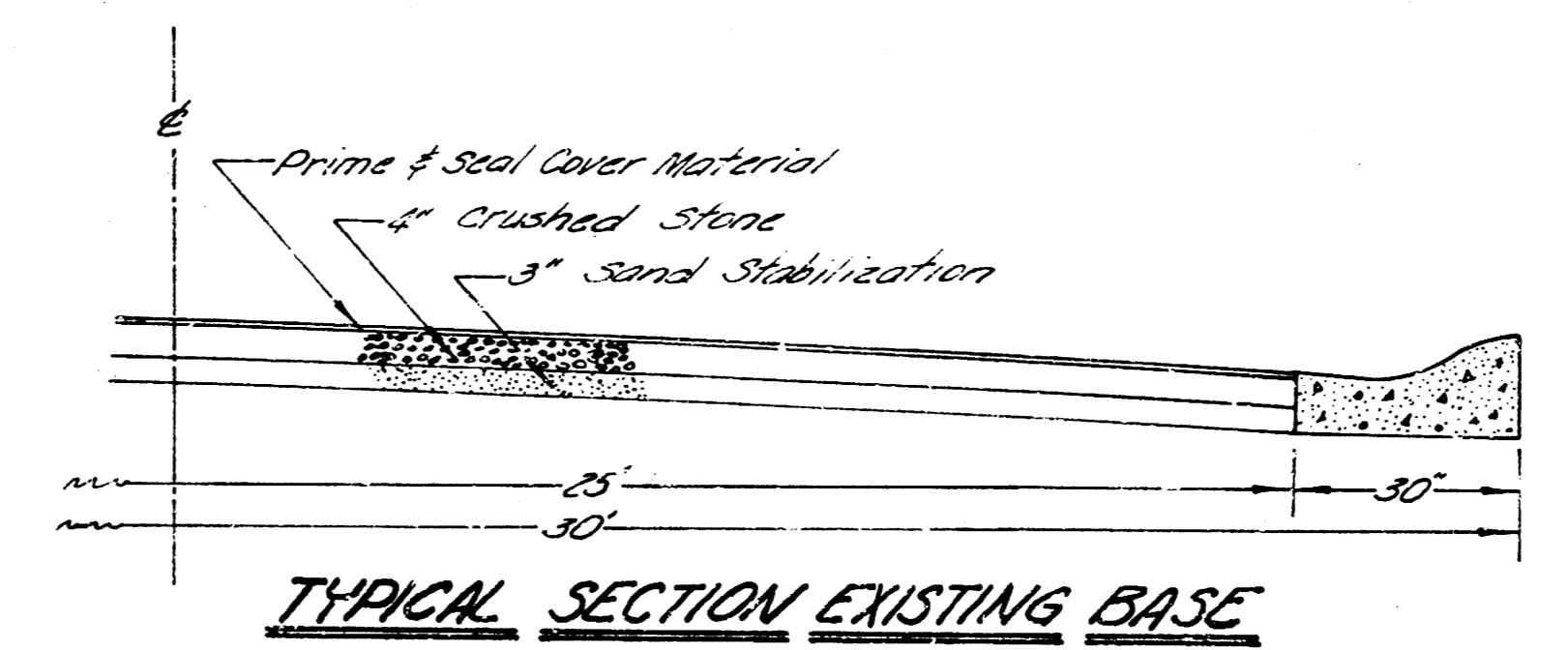


25TH ST.
 E.L. BLUFF TO E.L. CEDAR VILLAGE ADDN.
25' CONCRETE
 CITY OF WICHITA, KANSAS
 B.E. SMITH CITY ENGINEER
 DATE: MAY 1961 PROJ. NO. C10-110





NOTE:
 New 6" concrete pavement shall match high edge of existing stone curb & gutter. New sections of curb & gutter to be poured as noted on plan.



25TH ST.
 PROJ. NO. C10-110