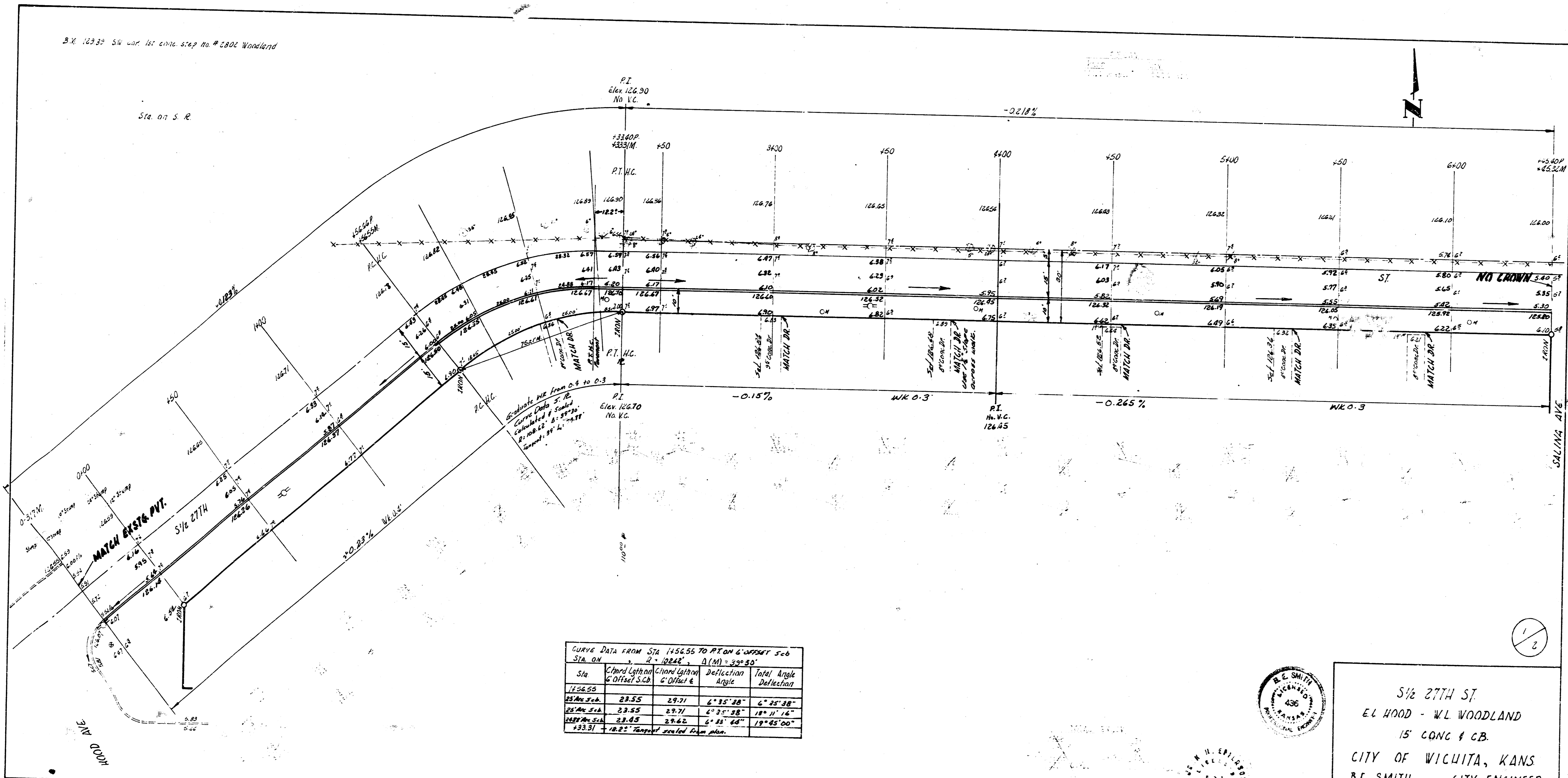


B.X. 12332 SW 1st civic strip no. # 2802 Woodland

Sta. on S.R.



Notes 116-6-13  
JEL  
482

CURVE DATA FROM STA. 1456.55 TO PT ON 6' OFFSET S.C.B.

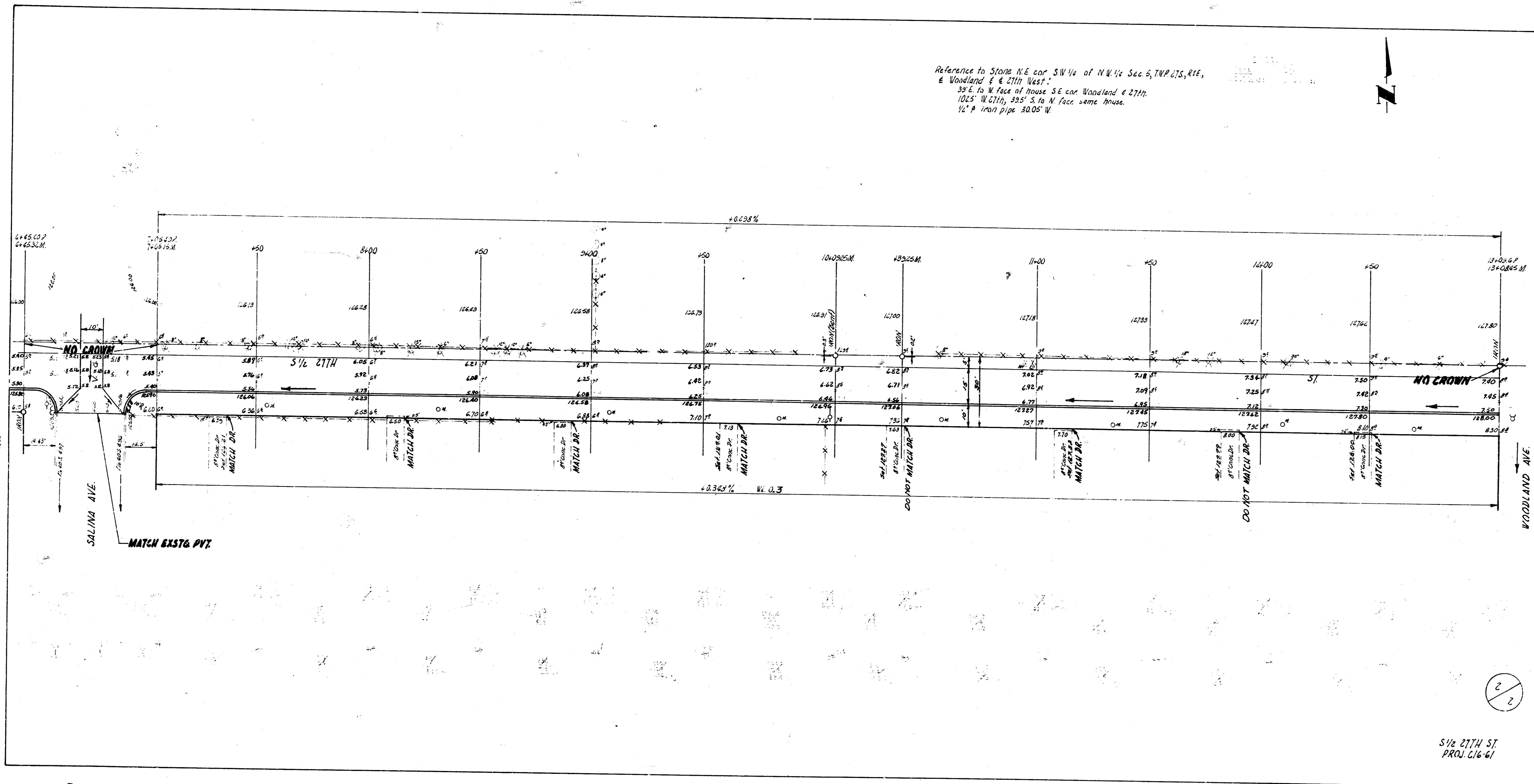
| Sta     | Chord Length<br>& Offset S.C.B. | Chord Length<br>& Offset E. | Deflection<br>Angle | Total Angle<br>Deflection |
|---------|---------------------------------|-----------------------------|---------------------|---------------------------|
| 1456.55 |                                 |                             |                     |                           |
| 1456.55 | 23.55                           | 29.71                       | 6° 35' 38"          | 6° 35' 38"                |
| 1456.55 | 23.55                           | 29.71                       | 6° 35' 38"          | 12° 71' 16"               |
| 1456.55 | 23.65                           | 29.62                       | 6° 35' 44"          | 18° 47' 00"               |
| 1456.55 | 23.75                           | 29.53                       | 6° 35' 50"          | 25° 22' 48"               |



5 1/2 27TH ST  
 EL HOOD - WL WOODLAND  
 15' CONC & CB.  
 CITY OF WICHITA, KANS  
 B.E. SMITH CITY ENGINEER  
 AUG 1956 PROJ. 616-62



Reference to Stone N.E. cor. SW 1/4 of NW 1/4 Sec 9, TWP. 07S, R1E,  
 & Woodland & E 27th West.  
 39' E. to W. face of house S.E. cor. Woodland & 27th.  
 102.5' W. 27th, 335' S. to N. face same house.  
 12" P. iron pipe 30.05' W.



1/2 27th St  
 Proj. 616-6