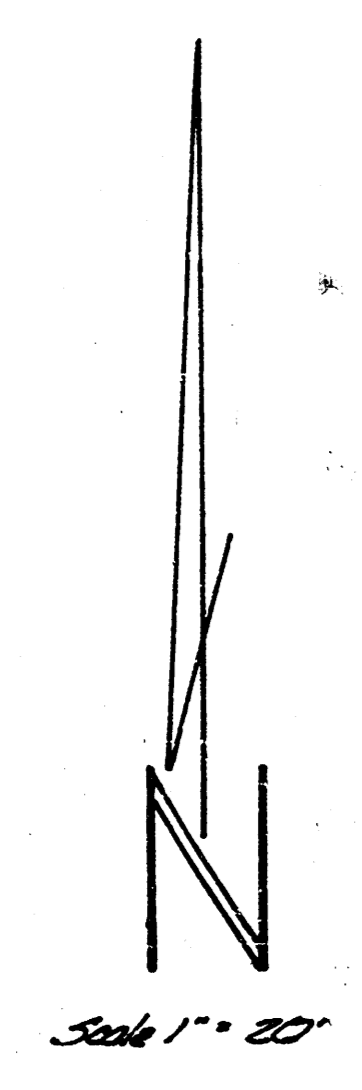




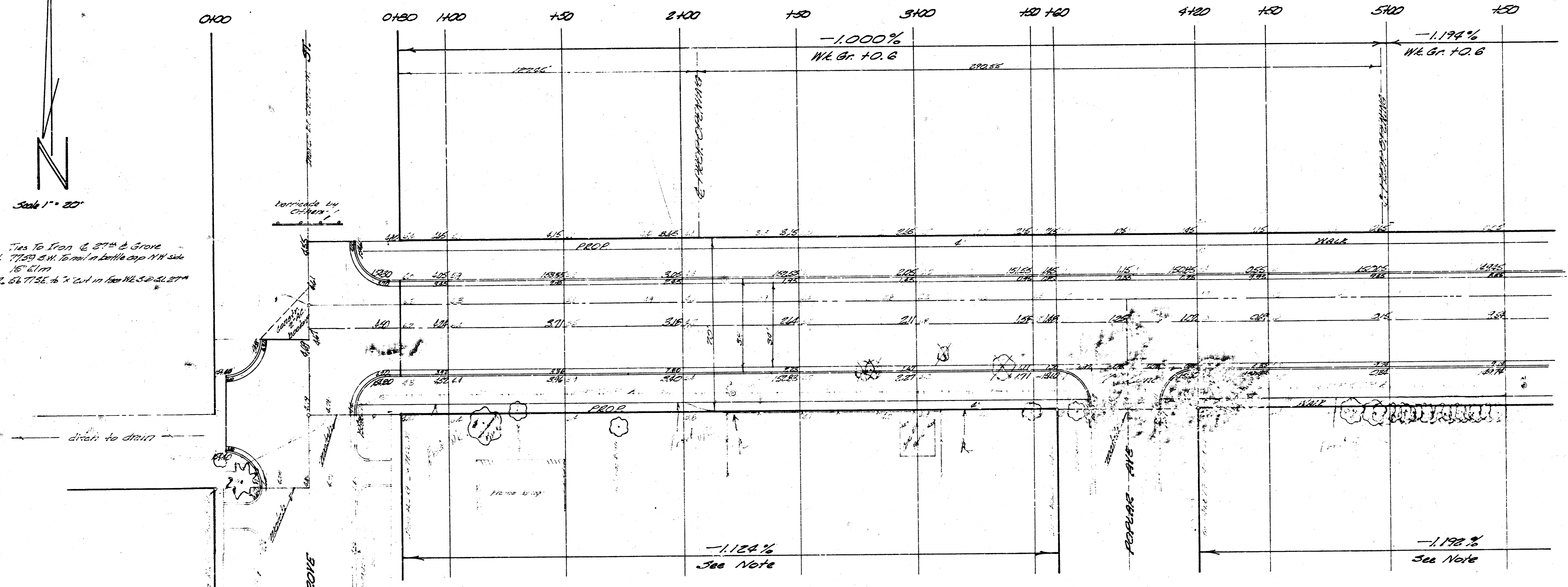


Shown as per  
Plan  
Lx  
Checked

B.M. 141.65 City Sta. on S.E. Cor. Grove @ 27th St. No.  
B.M. 155.51 R.R. Spk. E side of Elm Tree on SW Cor. 27th Grove  
B.M. 151.77 "H" cut Top N. cb. Poplar 9' S. of S.L. 27th St. No.



Ties to Iron @ 27th & Grove  
1. 7753 S.W. 10' nail in bottle cap 14" side  
15' S.W.  
2. 5277 SE 6' x 2" in for W.L. 27th St.



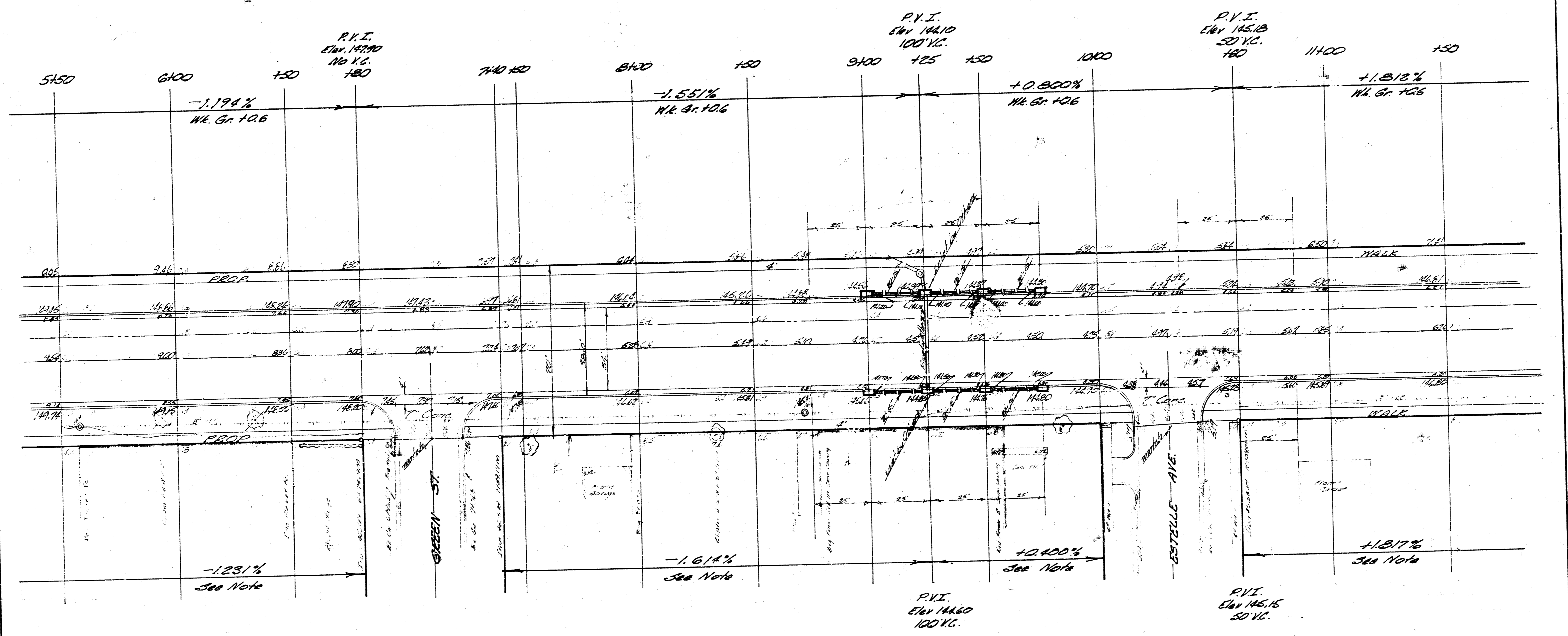
**NOTE TO FIELD ENG'ER:**  
Field Eng' to take walk profile and determine existing limits for parking grading on S. side 27th St. No. IF DRIVES are requested set walk grade @ 10' above top of curb & grade parking accordingly.  
Field Eng' to take final 'X' sections on South Parking from Grove to Volutsia

**NOTE TO CONTRACTOR:**  
Grade parking & clear R/W for proposed walk. Compact all backfill in sidewalk as shown on 'X' sections. Walk to be constructed by others.

EXCAVATION		COMPR		FILL	
PROP.	CITY	PROP.	CITY	PROP.	CITY
3889.0 CY	630.6 CY	141.5 CY	78.0 CY	16.2 CY	98.1 CY
304.9 +10%	681.1 CY	16.2 +10%	85.7 CY	177.7 CY	86.0 CY
4277.9 CY	748.7 CY				

27TH ST. NORTH  
W.L. GROVE TO & VOLUTSIA  
34' - 2' - 38' A.C.  
CITY OF WICHITA, KANSAS  
B. E. SMITH CITY ENGINEER  
DATE AUG. 1968 PROJ. C/18-63

B.M. 148.55 R.R. Spike N. Side Wood St Light Pole SW Cor Green & 27th St No.  
 B.M. 146.00 "P" Cut Blk 4th & E Side Estelle @ 31. 27th St No.



**NOTE TO CONTRACTOR**  
 Install 120" - 15" R.C.P. &  
 Construct 6" - 24" 5' 3" Manholes

25

