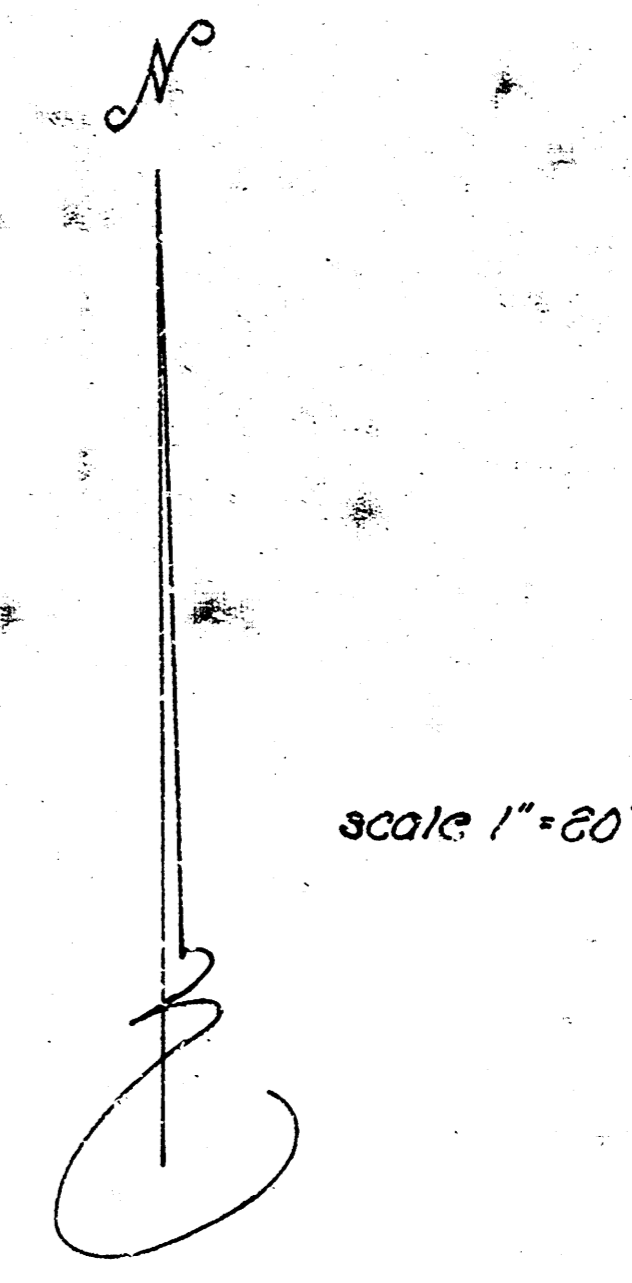
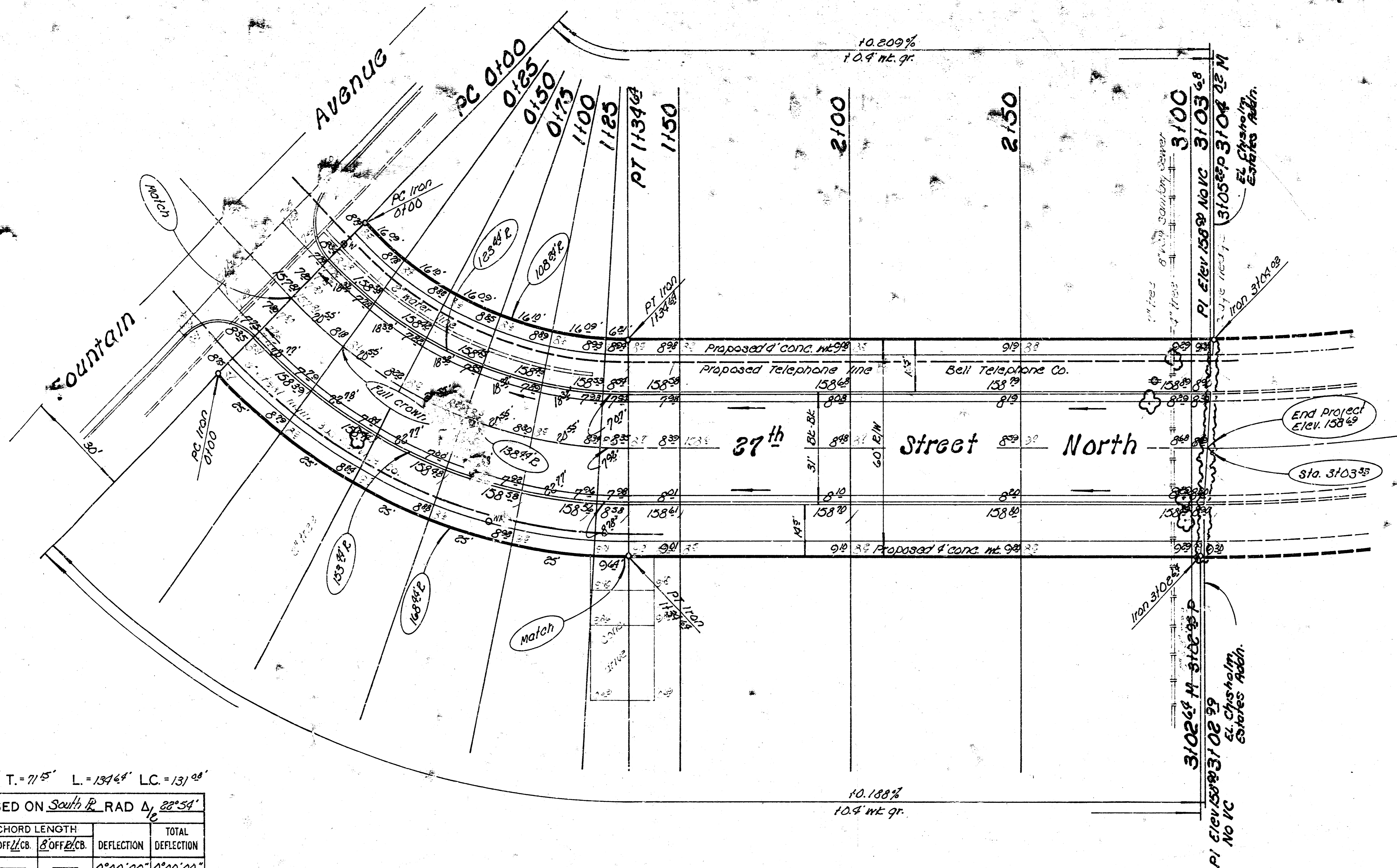


Baseline - South R



$\Delta = 45^\circ 48'$ R. = 168' T. = 71' 5" L. = 134' 4" LC. = 131' 0"

CURVE DATA BASED ON South R RAD Δ 28° 54'

STA.	ARC.	CHORD LENGTH		DEFLECTION	
		β OFF/CB.	β OFF/PC.	DEFLECTION	TOTAL DEFLECTION
0+00	—	—	—	0° 20' 00"	0° 00' 00"
0+25	25'	17' 12"	23' 29"	4° 15' 07"	4° 15' 07"
0+50	25'	17' 12"	23' 29"	4° 15' 07"	8° 30' 14"
0+75	25'	17' 12"	23' 29"	4° 15' 07"	12° 45' 21"
1+00	25'	17' 12"	23' 29"	4° 15' 07"	17° 00' 28"
1+25	25'	17' 12"	23' 29"	4° 15' 07"	21° 15' 35"
1+34.69	9.69'	6' 4"	9' 29"	1° 38' 25"	22° 54' 00"

detl/H. = 10.2046 min.

Earthwork

Excavation	293.7 cu yds	Comp. fill	17.7 cu yds
+10%	29.4 cu yds	+10%	1.8 cu yds
Total	323.1 cu yds	Total	19.5 cu yds

General Notes

- Contractor to clear right-of-way, grade parking and construct compacted fill in sidewalk areas where necessary. Sidewalk to be constructed by others.
- Type of subgrade treatment shall be as determined by the field engineer. Subgrade treatment may consist of lime treatment, cement treatment, subgrade modification, or any combination of these.
- All irons affected by any construction shall be protected by the Contractor.



27th Street North

EL Fountain Ave. to EL lot 4,
Blk. 1, Chisholm Park Estates
26-8-30 Asphaltic Concrete
City of Wichita, Kansas
Dick Linn City Engineer
Date Proj DAKS574028