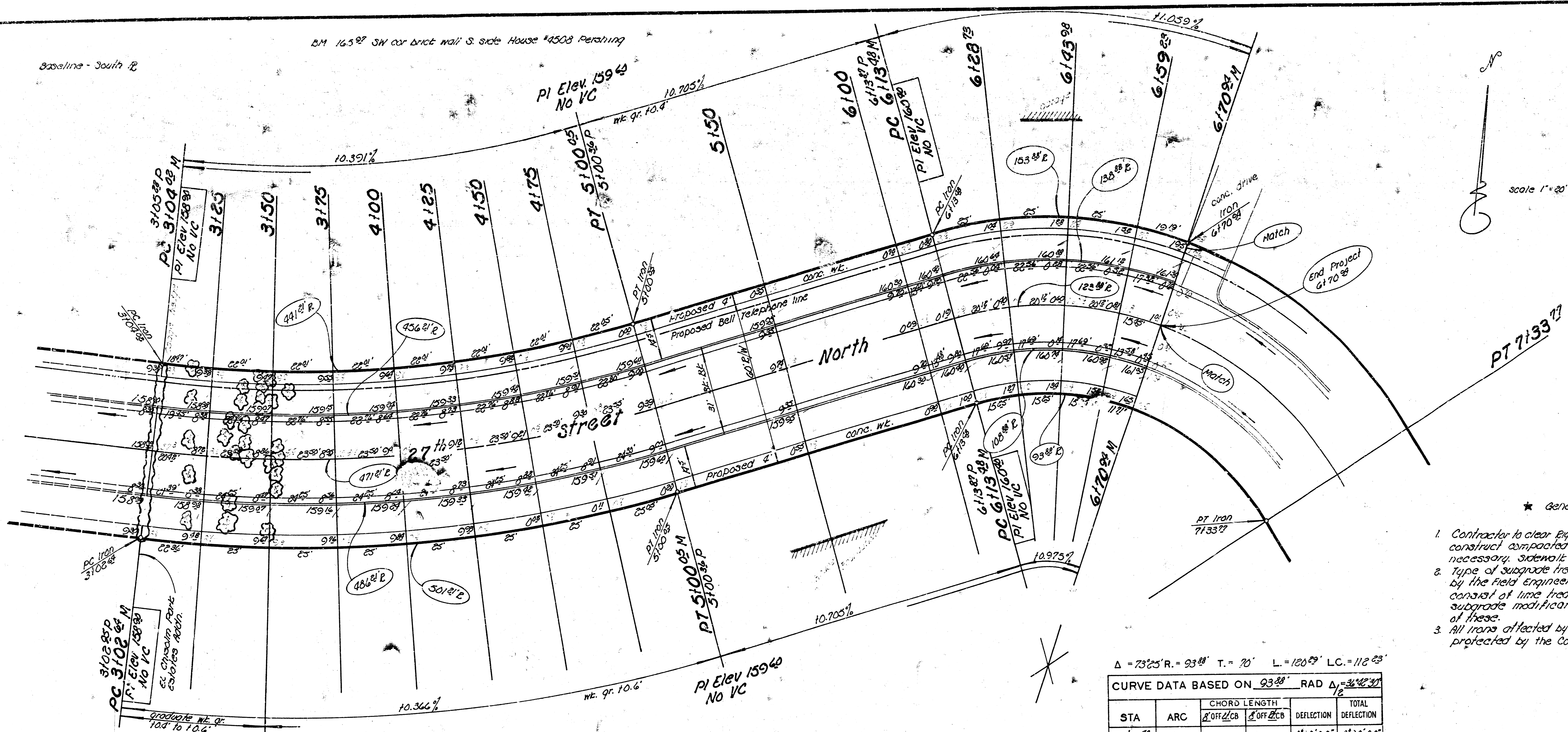


Baseline - South P

B.M. 16.3' SW cor brick wall S. side House #4508 Perching



1. Contractor to clear right-of-way, grade parking and construct compacted fill in sidewalk areas where necessary. Sidewalk to be constructed by others.
2. Type of subgrade treatment shall be as determined by the field engineer. Subgrade treatment may consist of lime treatment, cement treatment, subgrade modification, or any combination of these.
3. All irons affected by any construction shall be protected by the contractor.

$\Delta = 73^{\circ}25' R = 93.88'$  T. = 70' L. = 120.89' LC. = 112.83'

CURVE DATA BASED ON 93.88' RAD  $\Delta = 73^{\circ}25'$

STA	ARC	CHORD LENGTH		DEFLECTION	TOTAL DEFLECTION
		$\Delta$ OFF $\Delta$ CB	$\Delta$ OFF $\Delta$ CB		
6113.48	—	—	—	0'00"00"	0'00"00"
6128.75	15.27'	23.85'	16.37'	4'39"13"	4'39"13"
6145.98	15.23'	23.85'	16.37'	4'39"13"	9'18"26"
6159.83	15.23'	23.85'	16.37'	4'39"13"	13'57'39"
6170.82	11.71'	18.31'	12.37'	3'34"24"	17'32'39"
7133.77	62.83'	96.98'	66.84'	15'10"22"	36'48'63"

Defl./ft. = 18.309 min.

$\Delta = 22^{\circ}34' R = 501.81'$  T. = 100' L. = 197.81' LC. = 196.13'

CURVE DATA BASED ON 501.81' RAD  $\Delta = 22^{\circ}34'$

STA	ARC	CHORD LENGTH		DEFLECTION	TOTAL DEFLECTION
		$\Delta$ OFF $\Delta$ CB	$\Delta$ OFF $\Delta$ CB		
3102.84	—	—	—	0'00"00"	0'00"00"
3104.02	1.18'	1.83'	1.38'	0'04"44"	0'04"44"
3125	20.98'	18.76'	20.49'	1'11"57"	1'16'41"
3150	25'	22.35'	24.45'	1'25'44"	2'42'25"
3175	25'	22.35'	24.45'	1'25'44"	4'08'09"
4100	25'	22.35'	24.45'	1'25'44"	5'33'53"
4125	25'	22.35'	24.45'	1'25'44"	6'59'38"
4150	25'	22.35'	24.45'	1'25'44"	8'25'22"
4175	25'	22.35'	24.45'	1'25'44"	9'51'06"
5100.05	25.85'	22.40'	24.70'	1'25'34"	11'17'00"

Defl./ft. = 3.4294 min.

**Earthwork**

Excavation 1289.9 cu yds	comp. fill 4.1 cu yds
+10% 129.0 cu yds	+10% .4 cu yds
<b>Total 1418.9 cu yds</b>	<b>Total 4.5 cu yds</b>

**27<sup>th</sup> Street North**

WL Greenbriar Manor Addn to  
 WL lot 49, Blk 8, Greenbriar Manor  
 26-2-30 Asph. Conc.  
 City of Wichita, Kansas  
 Dick Linn City Engineer  
 Date: Proj DAKS56003

