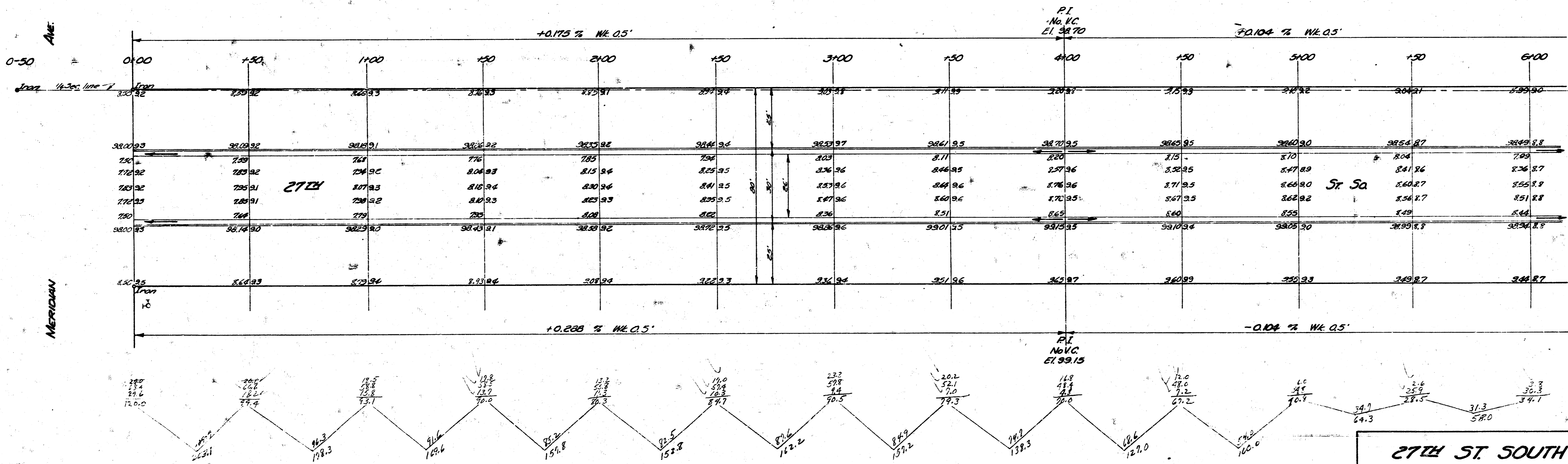


B.M. 99.67 Standard 6' W And 2' N Of NE Corner Meridian & 27th  
 B.M. 100.45 "M" In Muller Fire Plug NE Corner Everett & 27th  
 B.M. 100.30 "M" In Muller Fire Plug NE Corner Bond & 27th  
 B.M. 100.20 "M" In Muller Fire Plug NE Corner Euclid & 27th  
 B.M. 98.04 Standard 6' E & 2' S Of S.W. Corner Glenn & 27th  
 Stationing & Base Line On South Prop. Line Except Where Noted



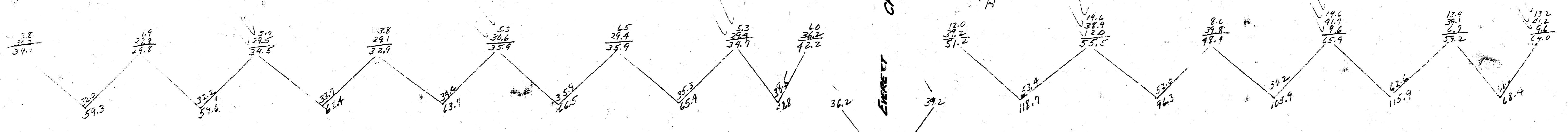
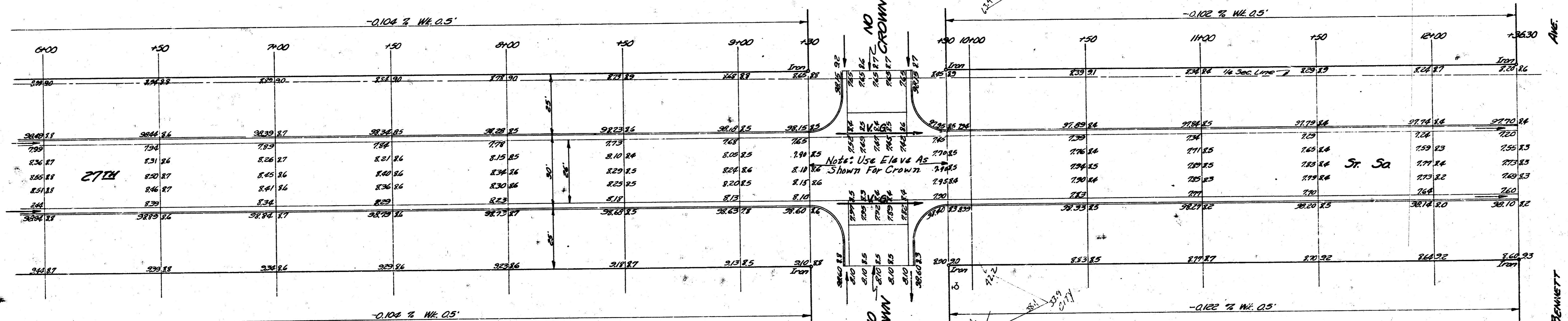
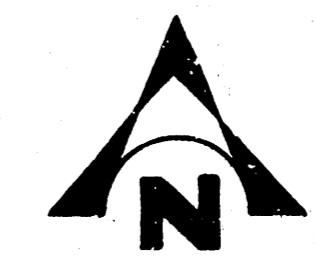
Surveyed  
 Excavated  
 Checked

PROPERTY  
 6100.9  
 +11.4% 118.1  
 4711.8 CU YDS. CUT

CITY  
 909.5  
 +10.7% 90.9  
 994.9 CU YDS. CUT



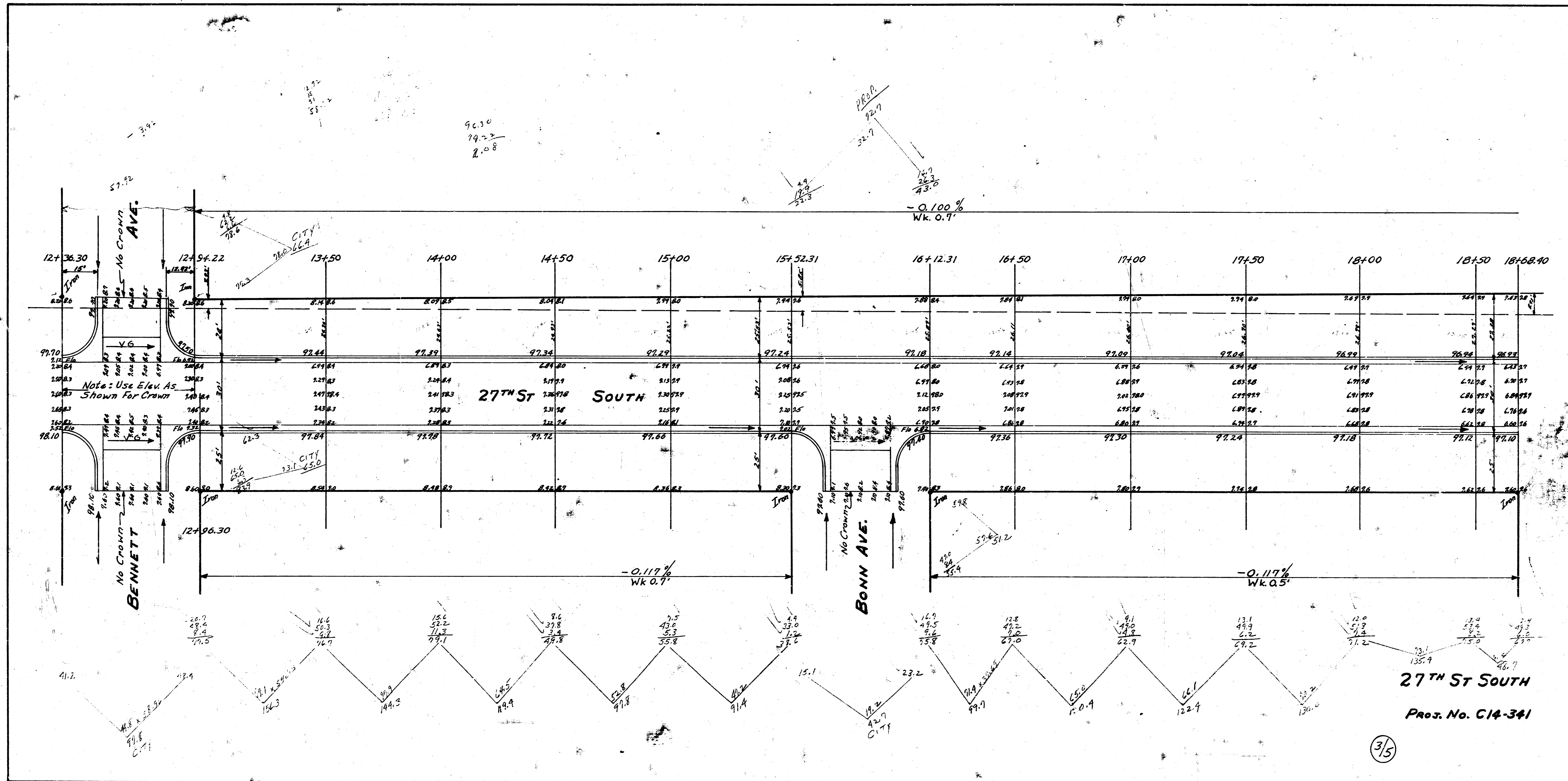
**27th ST. SOUTH**  
 E.L. MERIDIAN TO W.L. GLENN  
 26-2-30 A.C.  
 CITY OF WICHITA KANSAS  
 B.E. SMITH CITY ENGINEER  
 Aug. 1955 Proj. No. CM-341



27th St. So.  
Plan No. C14-341

(2/5)

27th St. So.  
Plan No. C14-341

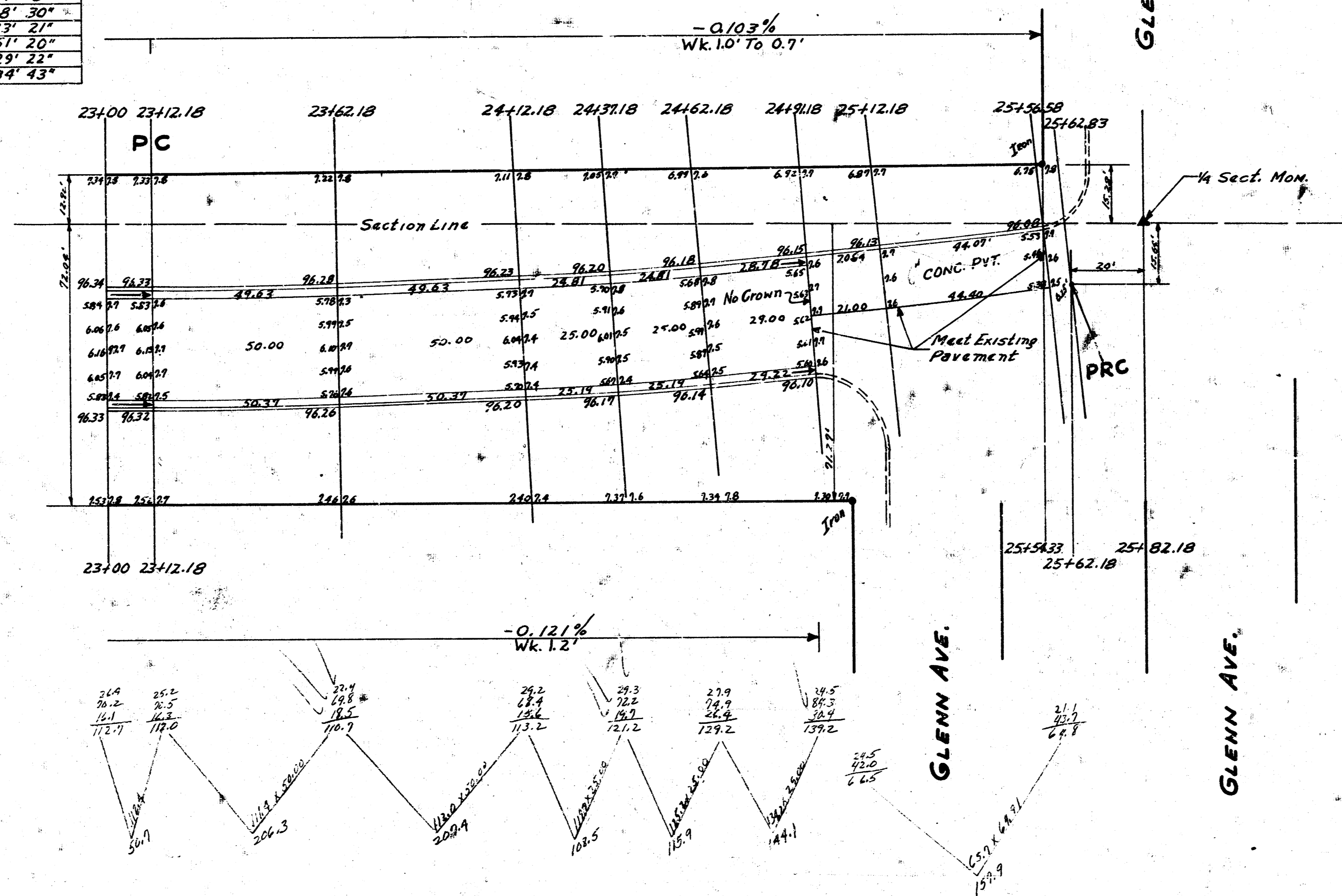


(35)



Curve Data Based On $E = 2000.5$ $\Delta = 7^\circ 0' 26''$					
Station	Chord's Offset	Sub Chord's Offset	N.C.B.	Dist. $C$	Total Del.
23+12.18	P.C.				
23+62.18	50.52	49.47	42' 50"	42' 50"	
24+12.18	50.52	49.47	42' 50"	10' 25" 40"	
24+31.18	25.26	24.74	21' 25"	10' 49" 5"	
24+62.18	25.26	24.74	21' 25"	2' 8' 30"	
24+91.18	29.31	28.70	24' 31"	2' 33' 21"	
25+12.18	21.21	20.79	17' 59"	2' 51' 20"	
25+36.58	44.86	43.93	38' 2"	3' 29' 22"	
25+62.83	6.31	6.18	5' 2"	3' 34' 43"	

NOTE: STATIONING FROM 23+12.18 TO 25+62.33 INCLUSIVE IS BASED ON  $E$  OF STREET EXCEPT STA. 25+54.33, 25+62.18 AND 25+82.18 WHICH ARE BASED ON SOUTH PROP. LINE.



27<sup>TH</sup> ST. SOUTH  
 Proj. No C14-341

5/5