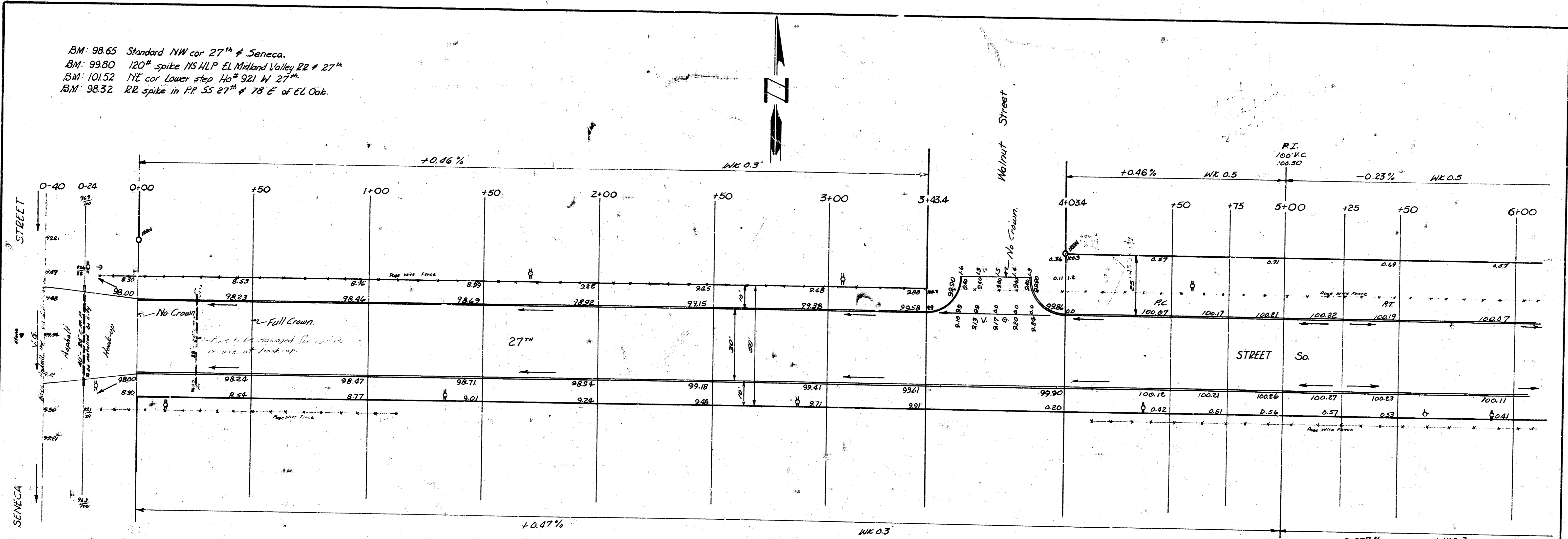


BM: 98.65 Standard NW cor 27th & Seneca.
 BM: 99.80 120th spike NS HLP EL Midland Valley RR & 27th
 BM: 101.52 NE cor Lower step Host 321 W 27th
 BM: 98.32 RE spike in RP 35 27th & 78th E of EL Oak.



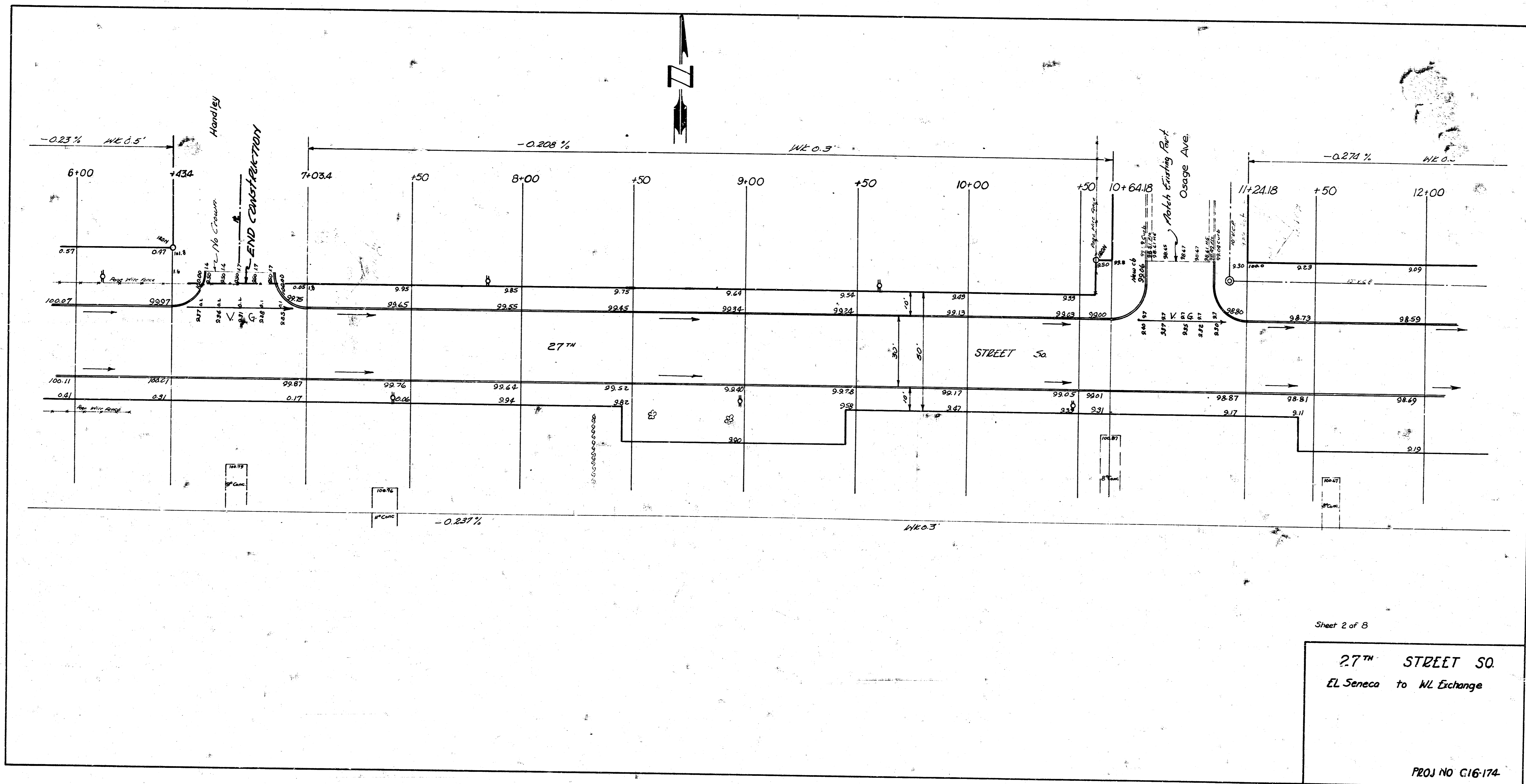
Surveyed by
 Date
 Checked by

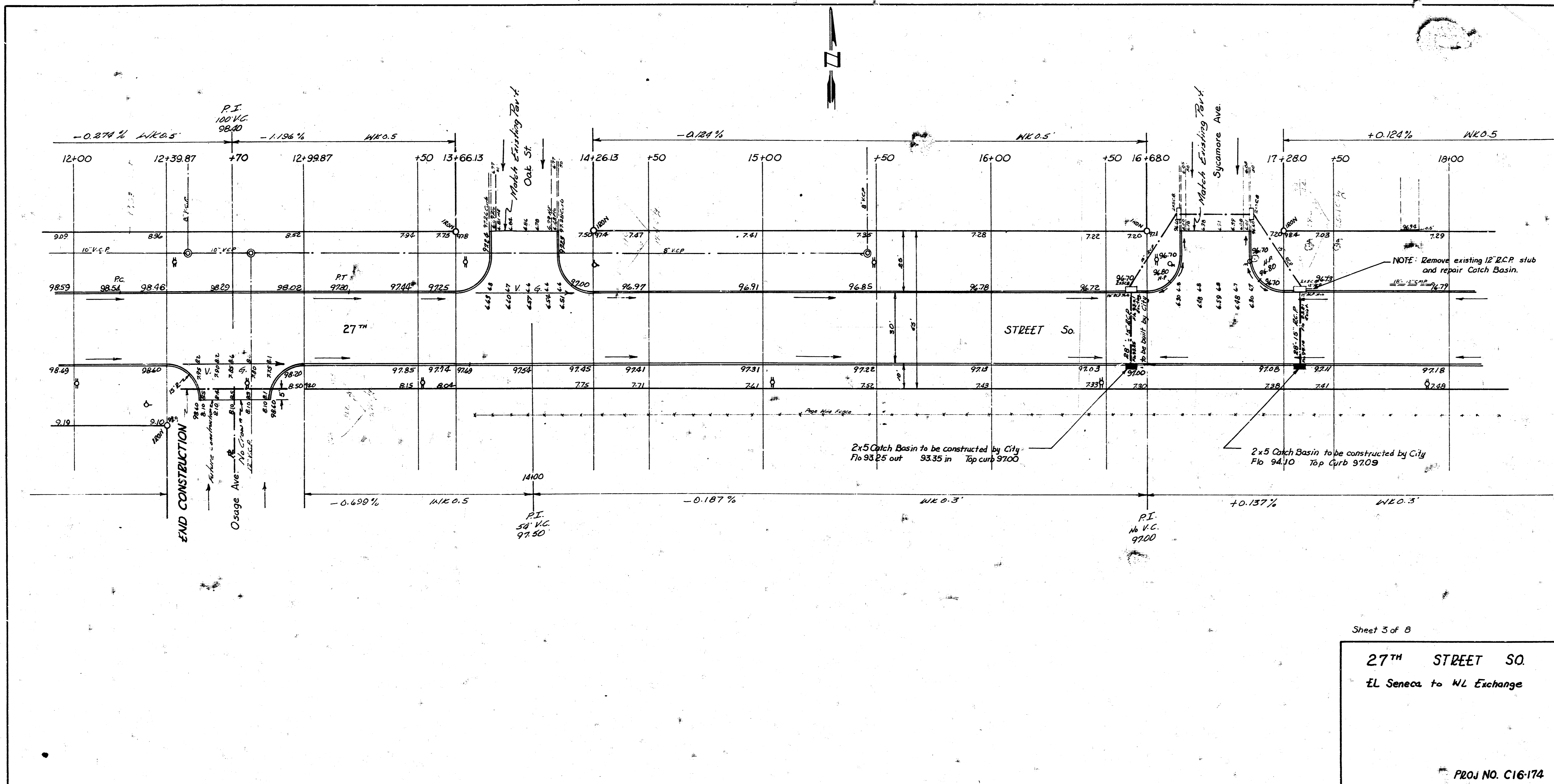
Description of Work
 27th Street
 30' Conc #Cb
 July 1957

Sheet 1 of 8



27th STREET SO.
 EL Seneca to WL Exchange
 30' Conc #Cb.
 CITY OF WICHITA, KANSAS
 R.E. SMITH CITY ENGINEER
 July 1957 PROJ NO C16-174

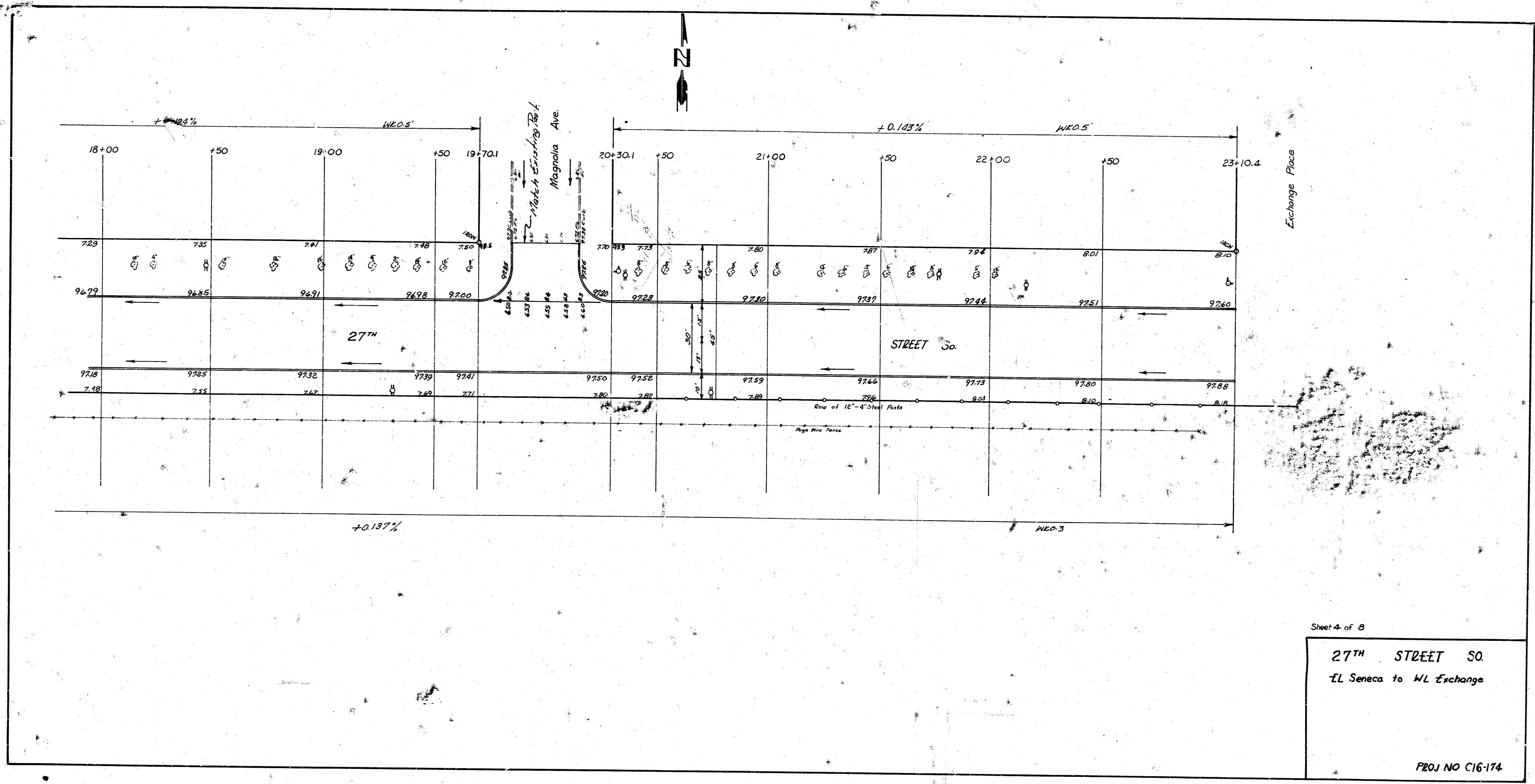




Sheet 3 of 8

27TH STREET SO.
 EL Seneca to WL Exchange

PROJ NO. C16-174



Sheet 4 of 8

27TH STREET SO.
 EL Seneca to WL Exchange

P20J NO C16-174