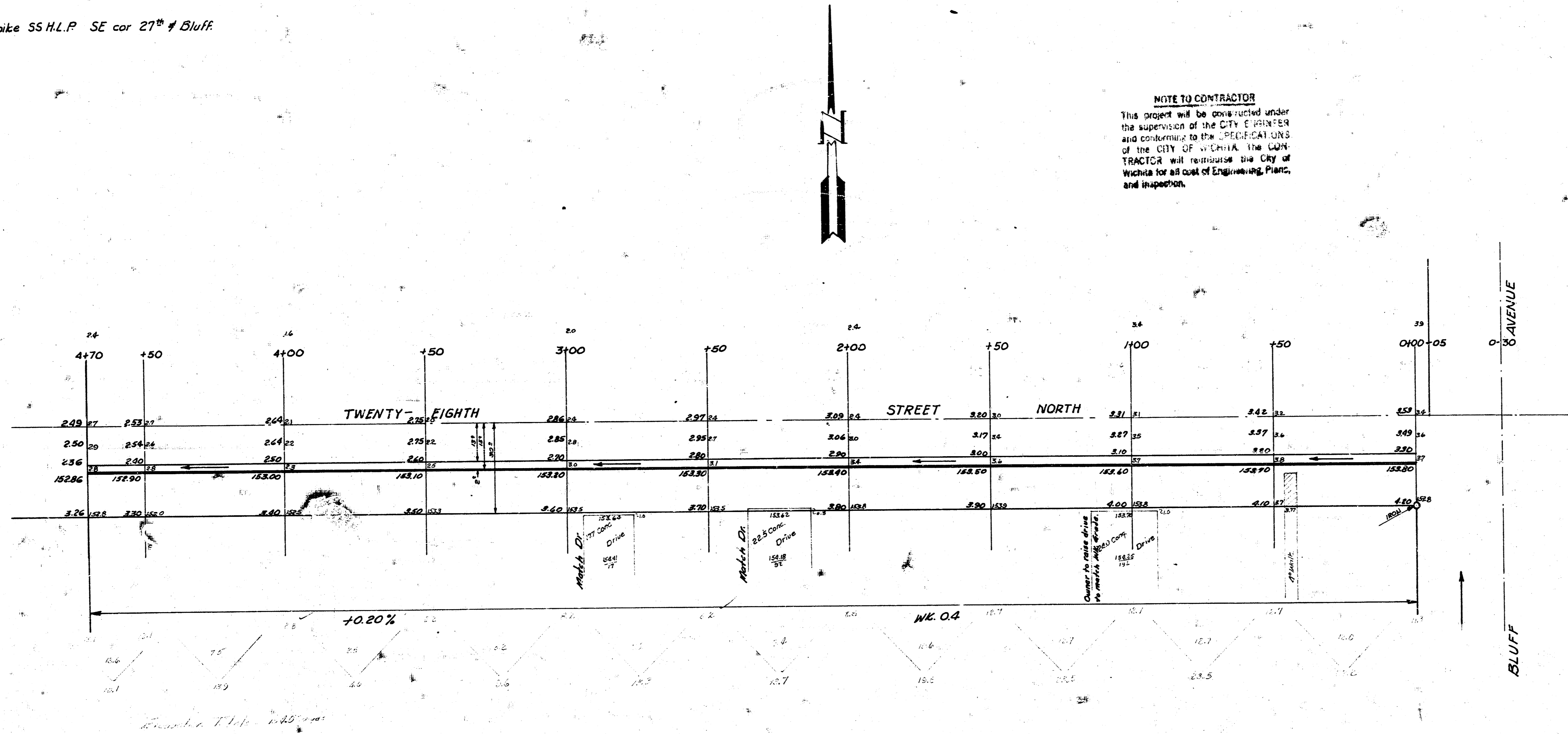


BM: 163.73 RR spike 55 H.L.P. SE cor 27<sup>th</sup> & Bluff

Survey Notes  
 Private Job  
 B.E. Smith  
 City Engineer  
 Wichita, Kansas

**NOTE TO CONTRACTOR**  
 This project will be constructed under the supervision of the CITY ENGINEER and conforming to the SPECIFICATIONS of the CITY OF WICHITA. THE CONTRACTOR will reimburse the City of Wichita for all cost of Engineering Plans, and inspection.



Estimate of Quantities  
 No. quantities based on optional details made

Item	Quantity	Unit	Material	Final Quantities
680	54.00	cu yd	Asphaltic Conc. Pavement	
470	1.00	lin ft	Combined Curbs & Gutters	
154	0.00	cu yd	Excavation	
2855	1.00	sq ft	Reinforcing Steel	
23	5.00	sq ft	Walk & Drive Removal	



**TWENTY-EIGHTH STREET NO.**  
 WL Bluff to 470' West  
 13-2-15 A.C.  
 CITY OF WICHITA, KANSAS  
 B.E. SMITH CITY ENGINEER  
 PRIVATE JOB.

*James H. Tandy*  
 4-17-25