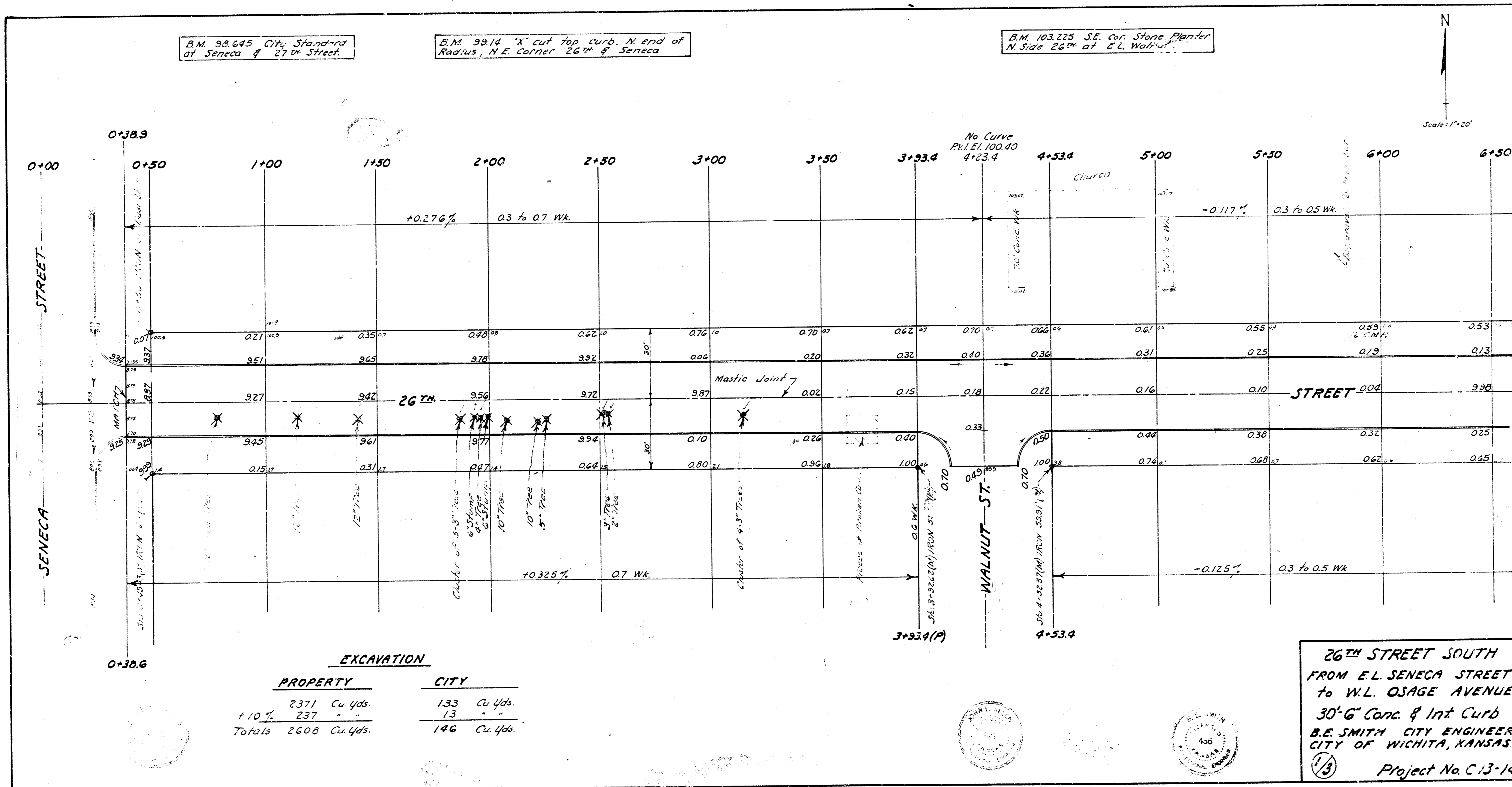


Sheet 1/3
 City Engineer
 B.E. Smith



B.M. 98.645 City Standard
 at Seneca & 27th Street.

B.M. 99.14 "X" cut top curb, N. end of
 Radius, N.E. corner 26th & Seneca

B.M. 103.225 S.E. cor. Stone Planter
 N. Side 26th at E.L. Walnut

Scale: 1"=20'

EXCAVATION		PROPERTY	CITY
		2371 Cu. Yds.	133 Cu. Yds.
+ 10 %		237 "	13 "
Totals		2608 Cu. Yds.	146 Cu. Yds.

26TH STREET SOUTH
 FROM E.L. SENECA STREET
 TO W.L. OSAGE AVENUE
 30" 6" CONC. & INT. CURB
 B.E. SMITH CITY ENGINEER
 CITY OF WICHITA, KANSAS
 1/3 Project No. C.13-14



B.M. 101.315 S.W. corner Cone
Step House No. 2652 Osage.

