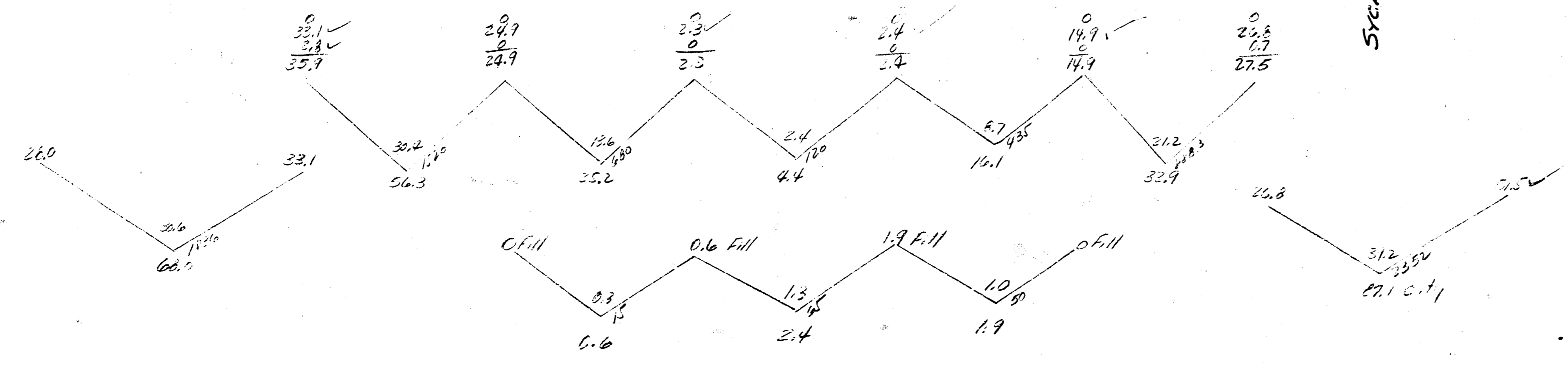
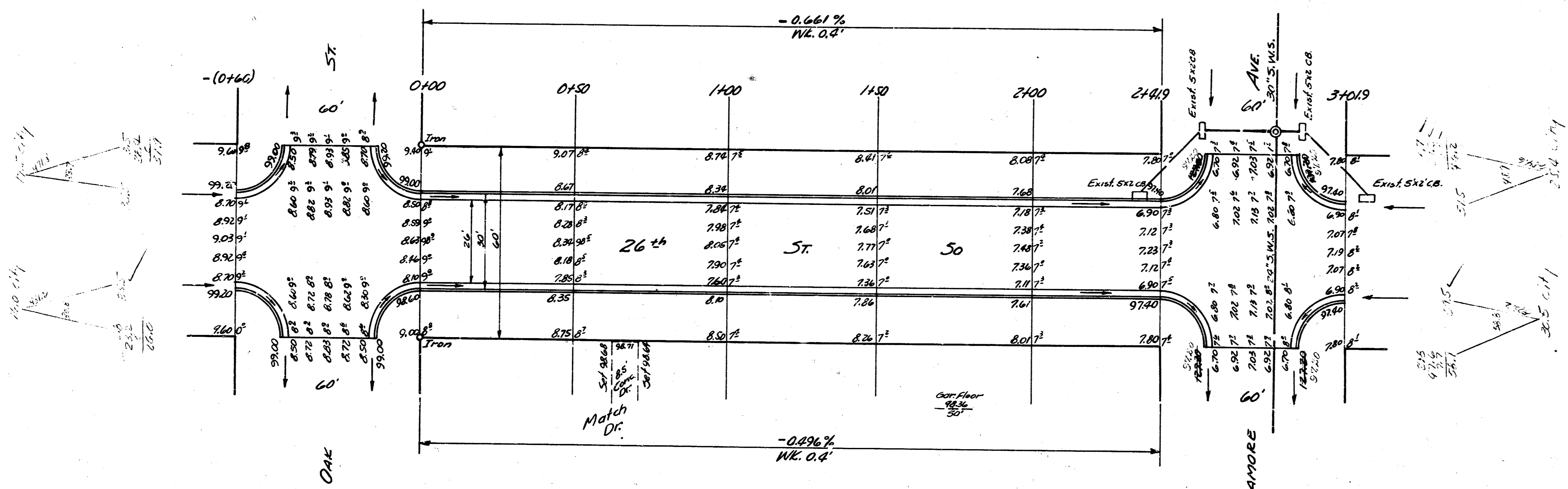


B.M. 98.725 S.W. Cor. 1st Conc. Step H^o 2752 So. Oak

FILL
 4.9 Cu. Yds.
 Total 5.4 Cu. Yds.

Excav.
 134.7
 415.0
 741 143.7 Cu. Yds.

City
 244.5
 209.0
 1.1 287.0 Cu. Yds.



Check by
 City
 Dec.
 1956



26th St. So.
 W.L. Oak To E.L. Sycamore
 26-2-30' A.C.
 CITY OF WICHITA, KANSAS
 B.E. SMITH CITY ENGINEER
 Feb 1956 PROJ. No. C1579