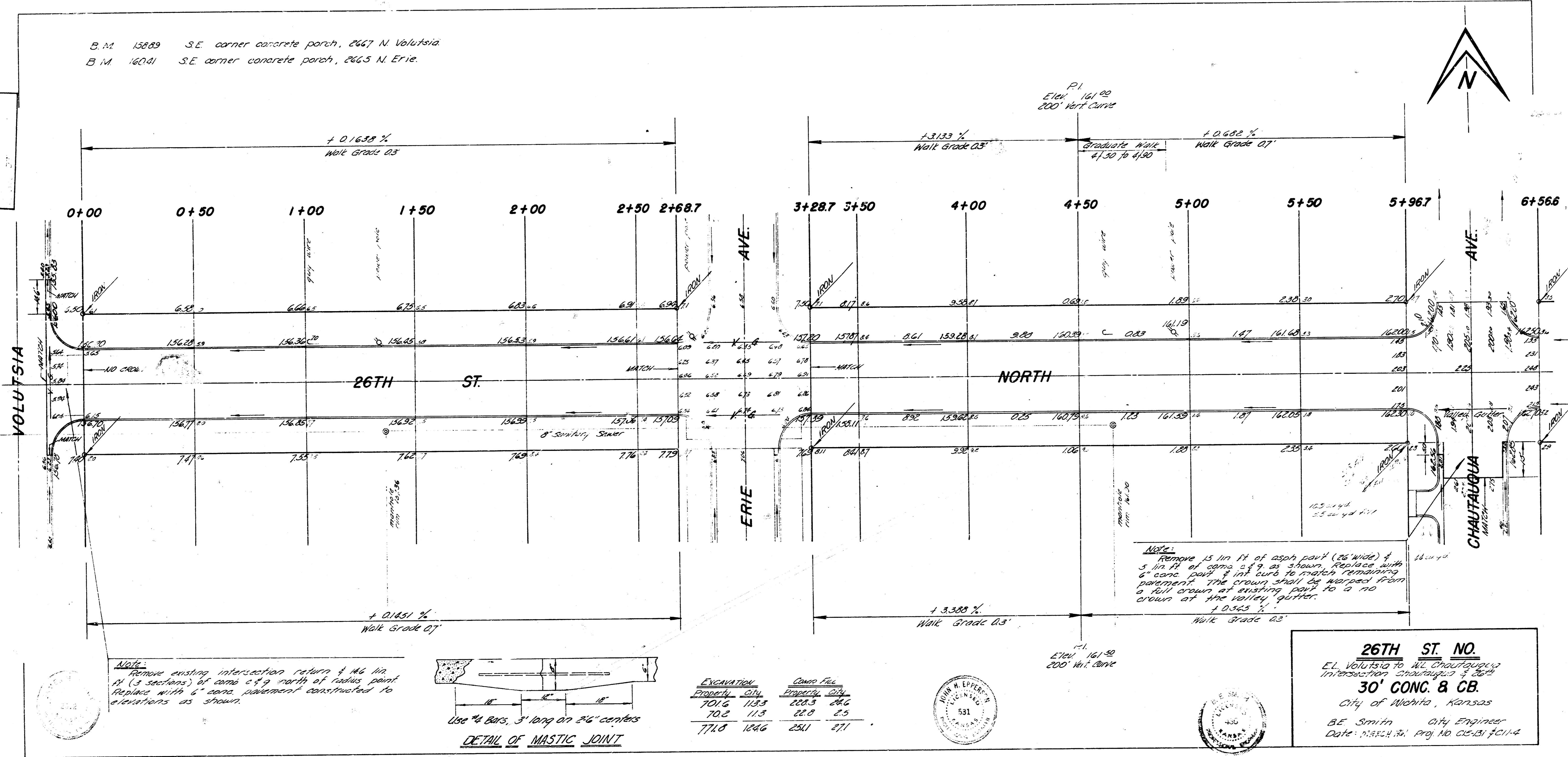
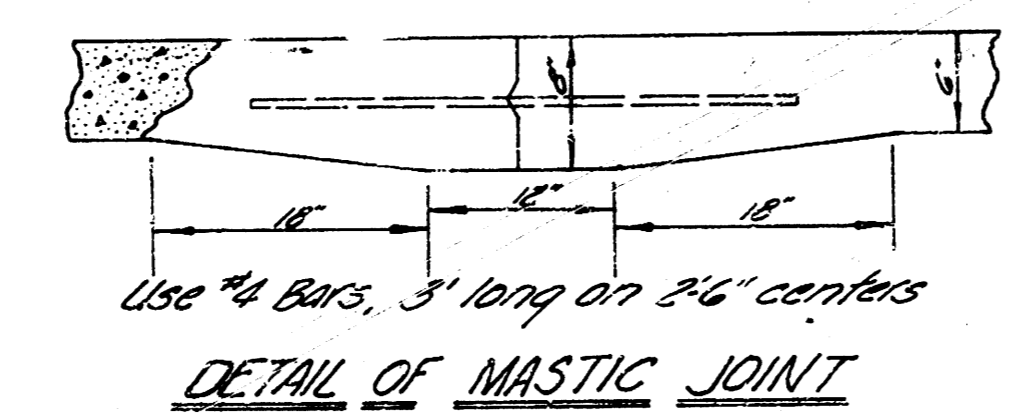


B.M. 15889 S.E. corner concrete porch, 2667 N. Volusia  
 B.M. 16041 S.E. corner concrete porch, 2665 N. Erie.

B.M. 15889  
 S.E. corner  
 concrete porch  
 2667 N. Volusia



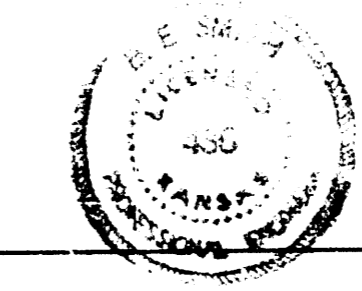
**Note:**  
 Remove existing intersection return of 1/4 in. ft. (3 sections) of curb of 9' north of radius point. Replace with 6" conc. pavement constructed to elevations as shown.

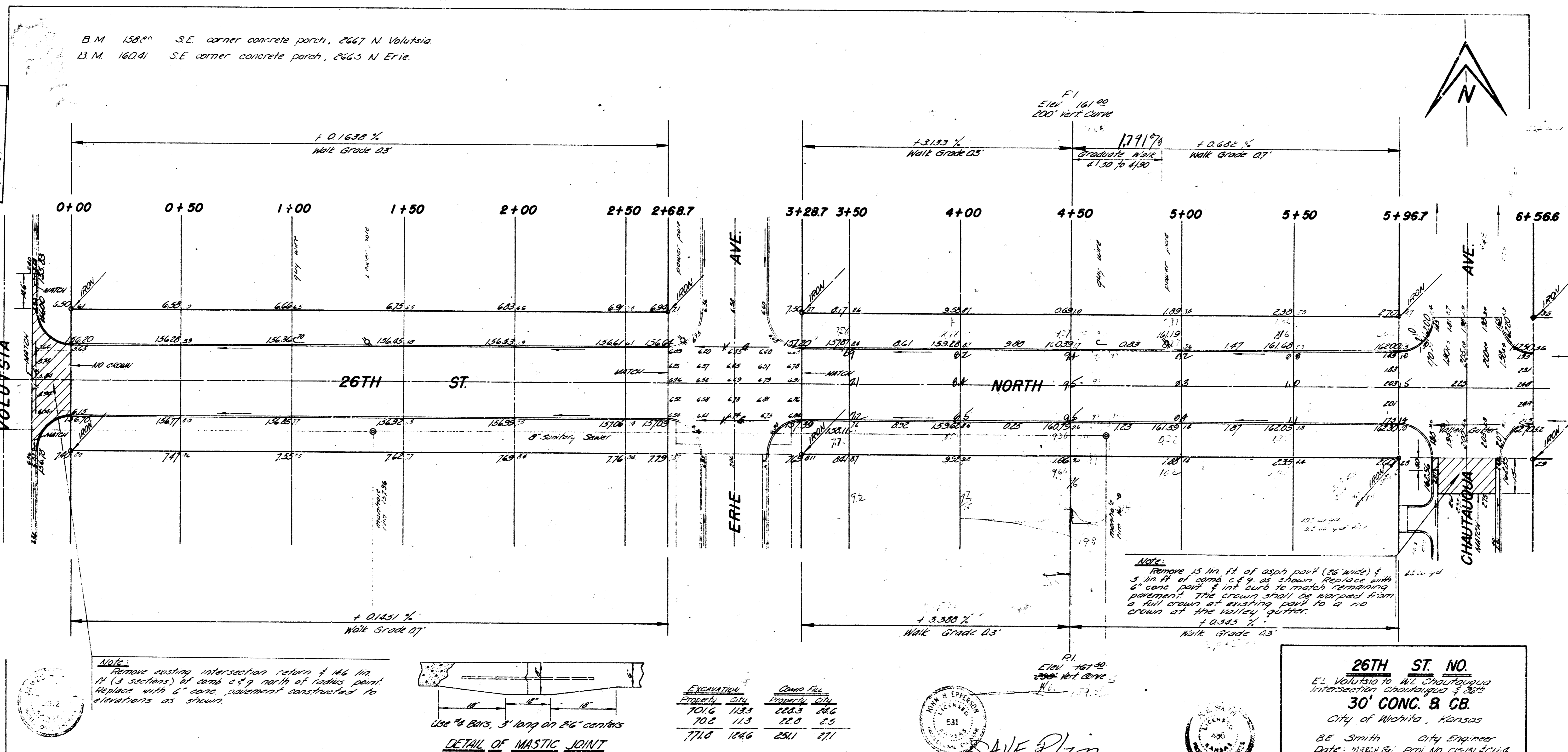


EXCAVATION		Curb File	
Property	City	Property	City
7016	1183	220.3	24.6
702	113	22.8	2.5
771.8	1246	251	271

**Note:**  
 Remove 1 1/2 in. ft. of asphalt (24" wide) & 5 in. ft. of curb of 9' as shown. Replace with 6" conc. curb & 1/2" curb to match remaining pavement. The crown shall be tapered from a full crown at existing curb to a no crown at the valley gutter.

**26TH ST. NO.**  
 E.L. Volusia to W.L. Chautauqua  
 Intersection Chautauqua & 26th  
**30' CONC. & CB.**  
 City of Wichita, Kansas  
 B.E. Smith City Engineer  
 Date: MARCH 31, 1914 Proj. No. 05-31-14





SAVE Plan  
 X Section for Fill