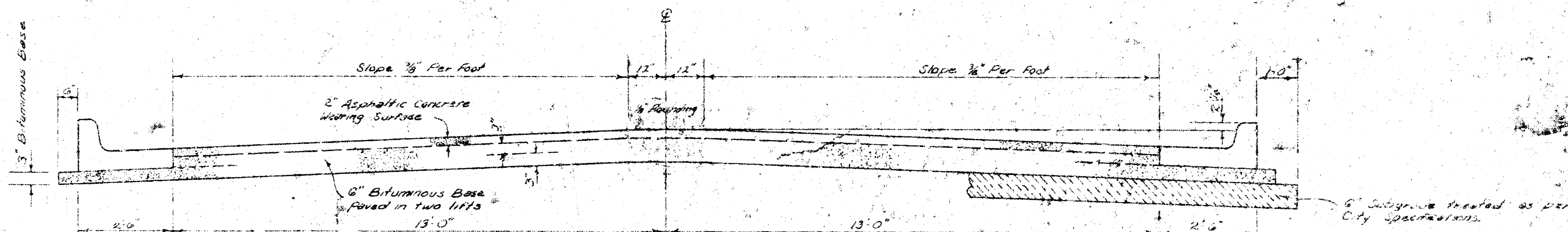


26TH ST. NO.
E.L. FOUNTAIN AVE. TO W.L. GREENBRIAR MANOR ADDITION
— PROJECT NO. — 472-76-245-80767-000-000-001 —



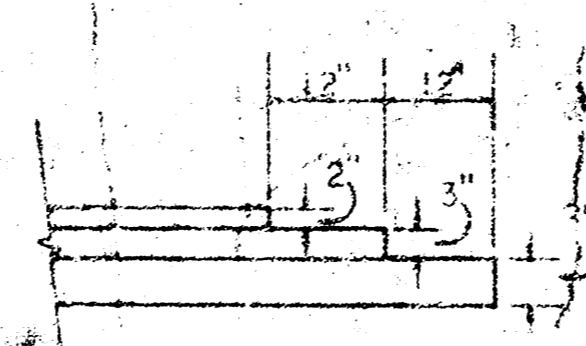
TYPICAL SECTION

3' ASPHALTIC CONCRETE PAVEMENT WITH BITUMINOUS BASE

A TACK COAT OF EMULSIFIED ASPHALT (SS-1H) SHALL BE APPLIED AT AN APPROXIMATE RATE OF 0.05 GALLONS PER SQ YD. BETWEEN LIFTS OF ASPHALTIC MATERIALS WHEN ORDERED BY THE ENGINEER. TACK COAT WILL NOT BE PAID FOR DIRECTLY AND SHALL BE CONSIDERED AS SUBSIDIARY TO PRICE BID FOR ASPHALTIC PAVEMENT.

BITUMINOUS BASE AND ASPHALTIC CONCRETE WEARING SURFACE SHALL BE PLACED WITH A LAYDOWN MACHINE HAVING AUTOMATIC ELECTRONIC CONTROLS FOR CROWN AND GRADE. CONSTRUCTION JOINTS IN EACH LIFT SHALL BE STAGGERED A MINIMUM DISTANCE OF 1' WITH JOINTS IN PRECEDING LIFTS AND SUCH THAT A JOINT WILL BE CONSTRUCTED ON THE PAVEMENT CENTERLINE IN THE TOP LIFT.

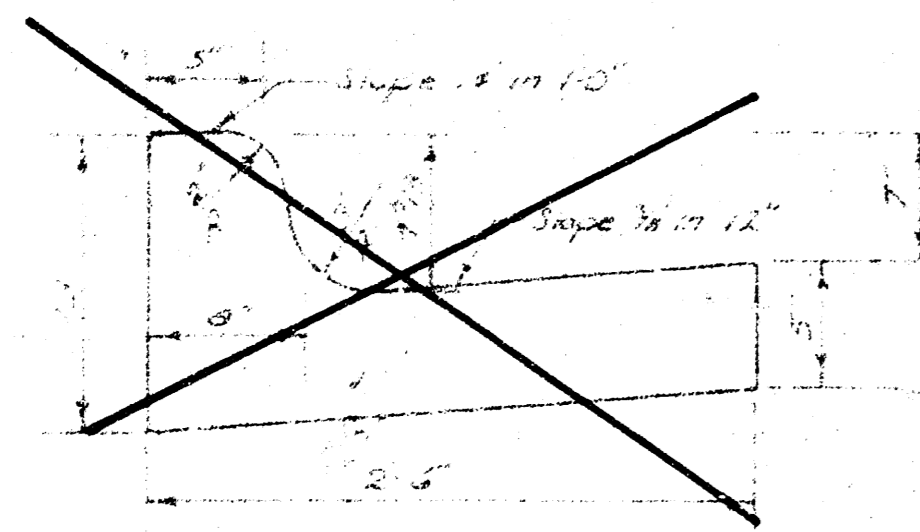
DETAIL OF TRANSVERSE CONSTRUCTION JOINTS



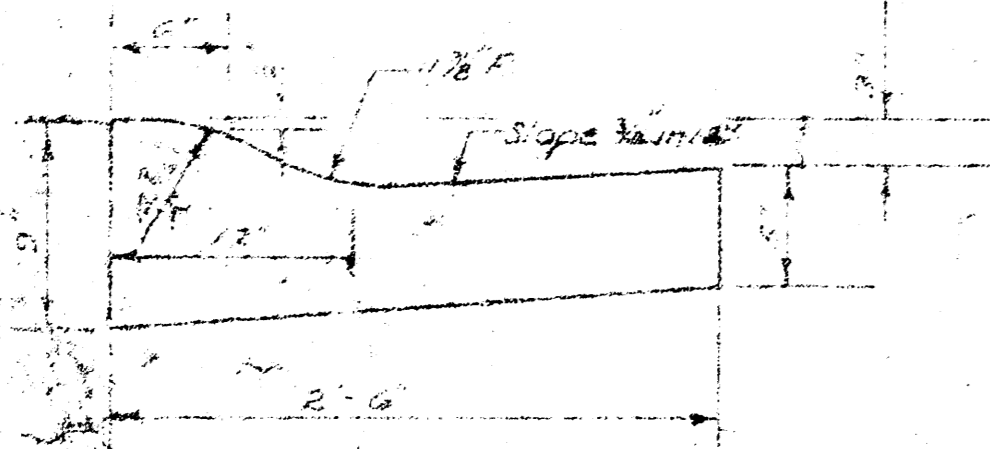
TRANSVERSE CONSTRUCTION JOINTS SHALL BE CONSTRUCTED IN FLEXIBLE BASE PAVEMENTS AT LOCATIONS WHERE PAVEMENT TEMPORARILY ENDS TO FACILITATE FUTURE PAVEMENT CONSTRUCTION AS SHOWN BY DETAIL. THE COST OF CONSTRUCTING THE TRANSVERSE CONSTRUCTION JOINTS SHALL NOT BE MEASURED OR PAID FOR DIRECTLY BUT SHALL BE INCLUDED IN THE BID PRICE FOR SQUARE YARDS OF ASPHALTIC CONCRETE PAVEMENT.

The A.C. pavement between the Comb Curb & gutter shall be paid as 3\"/>

COMBINED CURB & GUTTER



ROLL TYPE CURB & GUTTER



CITY OF WICHITA, KANSAS

DEPARTMENT OF PUBLIC WORKS — ENGINEERING

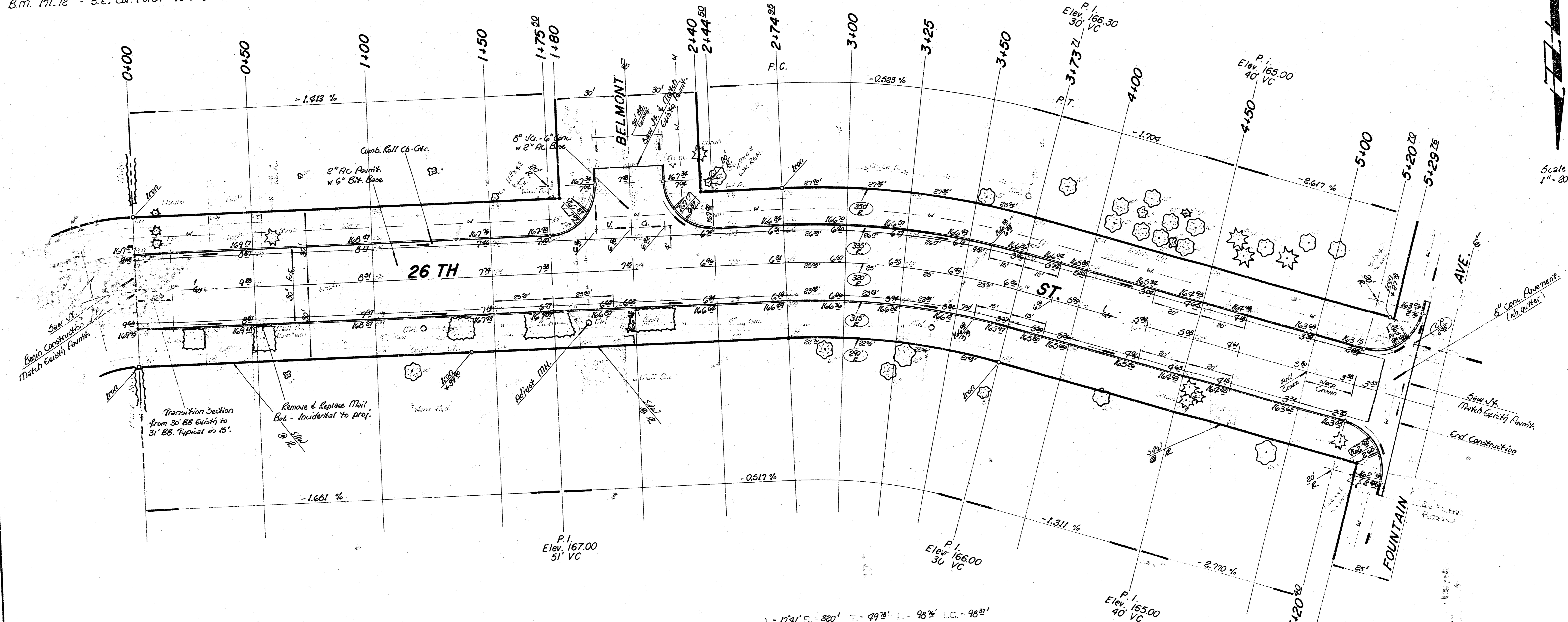
R. V. LINN CITY ENGINEER

DATE: _____ PROJECT NO. 472-76-245-80767-000-000-001

B.M. 174.49 - City Std. 25th & Oliver 44' W. of Oliver & 32' N. of 25th St.
 B.M. 165.62 - N.W. Cor. Par. 4700 Fountain.
 B.M. 171.12 - S.E. Cor. Par. 4300 E. 26th St.

Baseline is to 26th St. No.

Roll Cb. & Ctr. to be constructed on this project.



Survey
 Plan
 Elevation
 Checked

Scale: 1" = 20'

Note:
 Trees to be taken & any 'trunks' moved or destroyed during construction shall be replaced.
 Existing pavement consists of 4 1/2" of Asphalt & stone w. 3" of sand base, 30' BB. Existing 'mk.' to remain in place. Parking area to be graded to match E. Wk. Remove & replace drive at the same location & width as existing, unless otherwise specified.
 Construct Rad. Ramp Dr. Appr. w. Min. allowable ramps to accommodate bushes. Any bush interfering with construction shall be removed at the decision of the Engineer - otherwise any bush which can be saved shall be spared.
 Wheel Ch Ramps to be constructed at intersections, location determined by the Engineer.

□ - Indicates Removal.

Earthwork Quantities

Property	Exc.	CF = 0	City	Exc.	CF = 0
Exc. = 1482 cy			Exc. = 204 cy		
+ 10% = 1430			+ 10% = 21 -		
Total = 1628 cy			Total = 222 cy		
Manipulation = 1832 cy			Manipulation = 287 cy		

A = 17' R = 320' T = 49' L = 98' LC = 98'

CURVE DATA BASED ON 1/8" RAD. A = 8' 56' 30"

STA	ARC	Δ	Δ'	Δ''	DELTA	DELTA'	DELTA''
2+74	—	—	—	—	0' 00' 00"	0' 00' 00"	—
3+00	25'	26'	23'	23'	2' 14' 33"	2' 14' 33"	—
3+25	25'	26'	23'	23'	2' 14' 13"	2' 14' 13"	—
3+50	25'	26'	23'	23'	2' 14' 17"	2' 14' 17"	—
3+73	23'	25'	22'	22'	2' 07' 22"	2' 07' 22"	—

Defl. / Ft. = 5.371474 min.

SUB-GRADE
 TYPE OF SUB-GRADE TREATMENT SHALL BE DETERMINED BY THE FIELD ENGINEER. SUB-GRADE TREATMENT MAY CONSIST OF GRAVEL TREATMENT, CEMENT TREATMENT, OR GRADE MODIFICATION, OR ANY COMBINATION OF THESE.

26TH ST. NO.
 E.L. Fountain Ave. to W.L. Greenbriar Manor
 31' BB - 8" A.C. w. Comb. Roll Cb.-Gtr.
CITY OF WICHITA, KS.
 R. W. Linn - Project No. _____ City Engineer
 472-76-245-80767-000-000-001
 Date _____