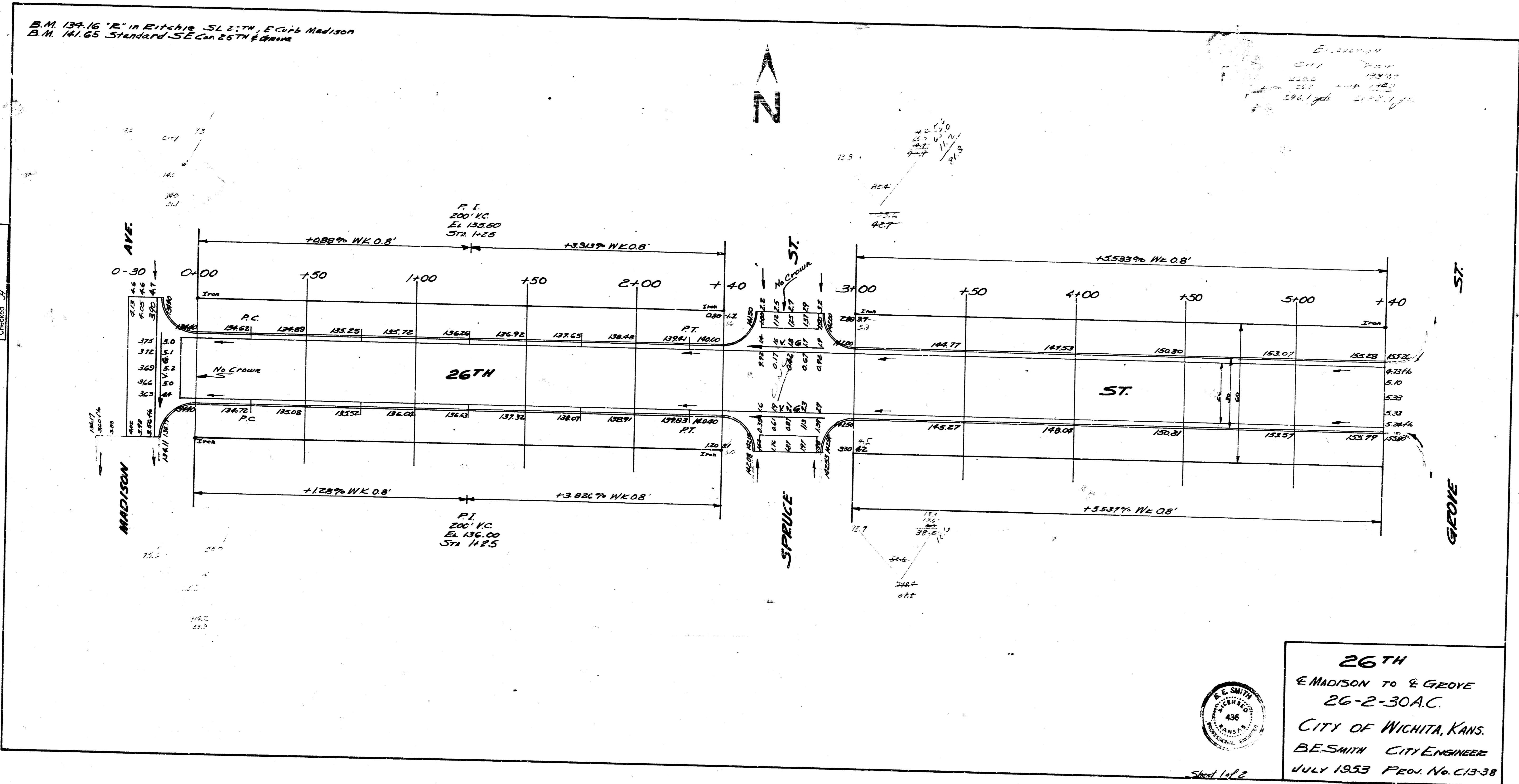


B.M. 139.16 "E" in EITCHIE SL 27TH, E Cor 6 Madison  
 B.M. 141.65 Standard SE Cor 25TH & Grove

26TH  
 CITY 2500  
 2500  
 2500  
 2500  
 2500  
 2500

Submitted by  
 Checked by



**26TH**  
 E MADISON TO E GROVE  
 26-2-30.A.C.  
 CITY OF WICHITA, KANS.  
 B.E. SMITH CITY ENGINEER  
 JULY 1953 PROJ. No. C13-38

Sheet 1 of 2